

07. Blouse
08. Shirt
09. Jacket or coat, Tailored
10. Vest
11. Pajamas
12. Infant Garment – 1 piece or set
13. Infant Accessory – hat, purse, etc. – 1 piece or set
14. Child garment
15. Child Accessory – hat, purse, etc. – 1 piece or set
16. Doll clothing
17. Costume
18. Sport apparel – includes nylon
19. Outdoor wear – coat, jacket, etc.
20. Western Wear – fringe, leather, denim, etc.
21. Garment that includes hand-appliqué, machine appliqué, trapunto, quilted, embroidery, or fusible appliqué
22. Sweatshirt or t-shirt – hand-decorated (garment need not be made by Entrant)
23. Wardrobe accessory item – purse, hat, scarf, belt, etc.
24. Soft Sculpture Creation – includes hand-made dolls, toy, stuffed animal, etc.
25. Kitchen accessory – apron, etc.
26. Wall Hanging
27. Home accessory – pillow, table runner, etc. – 1 piece or set
28. Holiday Theme
29. Machine Embroidery – free motion on garment
30. Machine Embroidery – free motion on home accessory
31. Digitized on a garment
32. Digitized on a Home Accessory
33. Original Design in any of the above - please include a description of what makes your item an original design
34. Other Wall Hanging

**Division B(a) - Counted Cross Stitch - Adult**

**Division B(b) - Counted Cross Stitch - 5-8 years**

**Division B(c) - Counted Cross Stitch - 9-12 years**

**Division B(d) - Counted Cross Stitch - 13-17 years**

**Division B(e) - Counted Cross Stitch – Special Abilities**

Class No.

01. People
02. Animals
03. Birds and Insects
04. Flowers
05. Naturescape
06. Cityscape
07. Still Life
08. Nostalgia
09. Fantasy
10. Quotations
11. Samplers - Alphabet
12. Samplers - Other
13. Announcements
14. Christmas - decoration
15. Christmas theme - framed
16. Other holiday - decoration

17. Other holiday theme – framed
18. Home accessory
19. Perforated paper
20. Graphic
21. Stamped cross stitch
22. Original Design in any of the above classes. Please include a description of what makes your item an original design.
23. Other

**Division C(a) - Embroidery - Adult**

**Division C(b) - Embroidery – 5-8-years**

**Division C(c) - Embroidery – 9-12 years**

**Division C(d) - Embroidery – 13-17 years**

**Division C(e) - Embroidery – Special Abilities**

Class No.

01. Crewel embroidery – picture or wall hanging
02. Floss embroidery – picture or wall hanging
03. Brazilian embroidery
04. Candlewicking
05. Ribbon embroidery
06. Hardanger (Norwegian embroidery)
07. Needle lace (Tenerife)
08. Needle punch
09. Hand embroidery on household accessory
10. Hand embroidery on garment
11. Printed stitch work – other than listed above
12. Swedish weaving
13. Bobbin lace or pillow lace
14. Original design in any of the above. Please include a description of what makes your item an original design.
15. Other

**Division D(a) - Machine Embroidery - Adult**

**Division D(b) - Machine Embroidery – 5-8-years**

**Division D(c) - Machine Embroidery - 9 - 12 years**

**Division D(d) - Machine Embroidery - 13 – 17 years**

**Division D(e) - Machine Embroidery Special Abilities**

Class No.

01. Pillowcases, pair
02. Baby article
03. Table linens
04. Dish towels
05. Wall hanging
06. Wearable item
07. Other

**Division E(a) - Tatting - Adult**

**Division E(b) - Tatting – 5-8 years**

**Division E(c) - Tatting 9 – 12 years**

**Division E(d) - Tatting 13 – 17 years**

**Division E(e) - Tatting - Special Abilities**

Class No.

01. Handkerchief trim
02. Pillowcase trim
03. Doilies
04. Scarf
05. Coasters
06. Table runner
07. Bookmark – 1 or set
08. Other

**Division F(a) - Other Needlecraft - Adult**

**Division F(b) - Other Needlecraft – 5-8 years**

**Division F(c) - Other Needlecraft – 9-12 years**

**Division F(d) - Other Needlecraft – 13-17 years**

**Division F(e) - Other Needlecraft – Special Abilities**

Class No.

01. Needlepoint
02. Bargello
03. Plastic canvas
04. Original design in any of the above. Please include a description of what makes your item an original design.
05. Other

**Division G(a) - Crochet - Adult**

**Division G(b) - Crochet – 5-8 years**

**Division G(c) - Crochet – 9-12 years**

**Division G(d) - Crochet – 13-17 years**

**Division G(e) - Crochet – Special Abilities**

Class No.

01. Afghan - baby
02. Afghan - blocks or strips
03. Afghan - one piece
04. Afghan - any other design
05. Doily or Lace
06. Doily - set
07. Filet - table runner/dresser scarf/wall hanging
08. Lace Edging - pillow slips, dresser scarf
09. Tablecloth
10. Bedspread
11. Kitchen Accessory - hot pad, dish rag, tea towel, etc.
12. Home Décor - 1 piece or set
13. Infant Set - 1 piece or set
14. Hat
15. Mittens
16. Scarf
17. Combination (Hats & Mittens)
18. Socks
19. Legwarmers
20. Headband
21. Child Garment
22. Adult Garment
23. Wardrobe Accessory – collar, cuffs, purse
24. Doll Clothing
25. Stuffed Animal/Doll/Toy
26. Christmas Ornament
27. Dog/Pet Sweater
28. Original Design in any of the above. Please include a description of what makes your item an original design
29. Other

**Division H(a) - Knitting – Adult**

**Division H(b) - Knitting – 5-8 years**

**Division H(c) - Knitting – 9-12 years**

**Division H(d) - Knitting – 13-17 years**

**Division H(e) - Knitting – Special Abilities**

Class No.

01. Afghan - baby
02. Afghan
03. Infant garment - 1 piece or set
04. Child garment
05. Adult sweater – plain

# DEPARTMENT 21

## Natural Fiber

### Products



Sponsored by Rocking L Alpacs

Superintendent:

Marjorie Lubinski • (406) 360-3502

**PREMIUMS: \$4.00; \$3.00; \$2.00**

#### **SPECIAL PREMIUMS:**

**Best of Show 100% Sheep Wool**

**Finished Product:**

\$100 Rapp Family Foundation

**Grand Champion Fleece:**

\$100 Rapp Family Foundation

\$20 - Big Sky Fiber Arts Guild

**Reserve Grand Champion Fleece:**

\$75 - Rapp Family Foundation

\$20 - Big Sky Fiber Arts Guild

**Best Handspun Skein:**

\$20 - Big Sky Fiber Arts Guild

**Best Handspun & Hand Knitted Socks:**

\$25 Gift Certificate to Joseph's Coat,

Missoula

**Best Commercially Spun, Knitted Finished**

**Product:** \$20 - Knotty Knitters

**Best Handwoven Finished Product:**

\$20 - Missoula Weavers Guild

**Superintendent's Choice:**

\$20 - Rapp Family Foundation

**Best Entry Junior 11 and under:**

\$20 - Big Sky Fiber Arts Guild

**Best Entry Junior 12-17:**

\$20 - Big Sky Fiber Arts Guild

\$25 Gift Certificate to Joseph's Coat,

Missoula

**Best Entry Special Abilities:**

\$20 - Big Sky Fiber Arts Guild

**Spinners Challenge: HANDSPUN WOOL SINGLES**

\$20 - Big Sky Fiber Arts Guild

**The following Special Drawings are**

**provided thanks to the generous donation from the Rapp Family Foundation:**

\$25: Each entrant in the Natural Fiber Products Department receives a ticket for this drawing.

\$25: Each entrant of fleece in the Natural Fiber Products Department receives a ticket for this drawing

\$25: Each first time entrant in the Natural Fiber Products Department receives a ticket for this drawing

#### **RULES AND REGULATIONS**

1. Refer to General Rules & Regulations.
2. This Department is concerned with natural fibers and its use in handmade textiles.
3. **Only 100% Natural Fiber Products will be accepted. Embellishments (buttons, clasps, etc.) made of other materials are allowed and socks may contain up to 25% nylon.**

06. Adult sweater – multiple colors
07. Adult sweater – cable/fisherman knot/Aran/Brioche - multicolor
08. Adult sweater – cable/fisherman knot/Aran/Brioche - plain
09. Coat or jacket (adult)
10. Other adult clothing item (i.e. vest) NOT sweater
11. Shawl or poncho (adult)
12. Hat
13. Mittens
14. Scarf
15. Combination (hats & mittens)
16. Socks
17. Legwarmers
18. Headband
19. Wardrobe accessory – collar, cuffs
20. Doll clothing
21. Stuffed animal/doll/toy
22. Lace – clothing item
23. Lace – home accessory – 1 piece or set
24. Kitchen accessory – i.e. dish rag, hot pad, etc.
25. Christmas ornament
26. Dog/pet sweater
27. Original design in any of the above. Please include a description of what makes your item an original design.
28. Other

#### **Division I(a) - Loom knitting - Adult**

#### **Division I(b) - Loom knitting – 5-8 years**

#### **Division I(c) - Loom knitting 9-12 years**

#### **Division I(d) - Loom knitting 13-17 years**

#### **Division I(e) - Loom knitting – Special Abilities**

Class No.

01. Hat
02. Headband
03. Scarf
04. Other

#### **Division J(a) - Wool Products - Adult**

#### **Division J(b) - Wool Products – 5-8 years**

#### **Division J(c) - Wool Products – 9-12 years**

#### **Division J(d) - Wool Products – 13-17 years**

#### **Division J(e) - Wood Products - Special**

#### **Abilities**

Class No.

01. Wool appliqué - clothing Item
02. Wool appliqué - home accessory
03. Wool felting accessory - purse, etc.
04. Wool felting - home accessory - pillow
05. Wool felting - clothing
06. Punch needle
07. Rug hooking
08. Wool penny rug
09. Original Design in any of the above. Please include a description of what makes your item an original design.
10. Other

#### **Division K(a) - Rugs - Adult**

#### **Division K(b) - Rugs – 5-8 years**

#### **Division K(c) - Rugs – 9-12 years**

#### **Division K(d) - Rugs – 13-17 years**

#### **Division K(e) - Rugs - Special Abilities**

Class No.

01. Braided

02. Hooked or punched needle
03. Loom woven
04. Knitted
05. Crocheted
06. Coiled
07. Other

#### **Division L(a) - Fleece Products - Adult**

#### **Division L(b) - Fleece Products – 5-8 years**

#### **Division L(c) - Fleece Products – 9-12 years**

#### **Division L(d) - Fleece Products – 13-17 years**

#### **Division L(e) - Fleece Products - Special**

#### **Abilities**

Class No.

01. Pillow
02. Blanket/Throw
03. Clothing
04. Other

#### **Division M(a) - Upcycled - Adult**

#### **Division M(b) - Upcycled -5-8 years**

#### **Division M(c) - Upcycled – 9-12 years**

#### **Division M(d) - Upcycled – 13-17 years**

#### **Division M(e) - Upcycled – Special Abilities**

Class No.

01. Accessory
02. Garment
03. Home Décor
04. Other

#### **Division N(a) - Vintage - Adult**

#### **Division N(b) - Vintage – 5-8 years**

#### **Division N(c) - Vintage – 9-12 years**

#### **Division N(d) - Vintage – 13-17 years**

#### **Division N(e) - Vintage – Special Abilities**

Class No.

01. Garment
02. Home Décor
03. Other

#### **Division O(a) - Bridging the Gap – 5-8 years**

#### **Division O(b) - Bridging the Gap – 9-12 years**

#### **Division O(c) - Bridging the Gap – 13-17 years**

#### **Division O(e) - Bridging the Gap – Special**

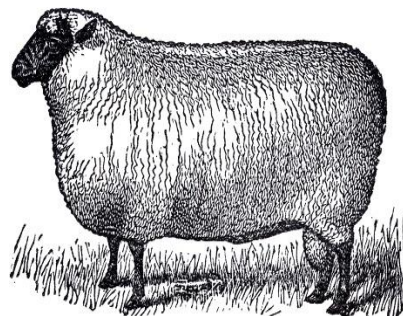
#### **Abilities**

Class No.

01. Sewn item
02. Knitted item
03. Crocheted item
04. Other - Specify

#### **GRAND CHAMPION - ROSETTE**

#### **RESERVE GRAND CHAMPION – ROSETTE**



4. **Fiber content must be specified on each entry when delivering your entries.**
5. Any fiber techniques can be used, such as weaving, spinning, felting, knitting, crocheting, etc.
6. All non-fleece entries must be the work of the Exhibitor and completed within TWO years of the fair.
7. All Fleece entries must be from an animal owned by the Exhibitor **60** days prior to the Fair.
8. **NO FLEECES WILL BE SOLD AT THE FAIR!**
9. **The Superintendent places all exhibits: no one may touch or move them without permission.**
10. Special Abilities category includes, but is not limited to, Ravalli Services, Opportunity Resources, and Nursing Home residents.

**Division A - Fleece**

**Division B - Jr. ages 11 & under, Fleece**

**Division C - Junior ages 12-17, Fleece**

**Division D - Special Abilities, Fleece**

Two (2) fleeces may be entered per class; each fleece must be entered separately. Judging is based on proper skirting and quality of fleece. Alpaca and Llama should contain blanket only.

Divisions A – D Class Nos.

01. Angora (angora rabbit)
02. Mohair (angora goat)
03. Targhee
04. Corriedale
05. Llama
06. Alpaca
07. Navajo-Churro
08. Merino
09. Rambouillet
10. Romney
11. Down Breeds (Suffolk, Southdown, Dorset, etc.)
12. All other purebreds (specify breed)
13. Crossbreed (specify breeds) - fine
14. Crossbreed (specify breeds) - medium
15. Crossbreed (specify breeds) – long

**Division E - Hand Processed Fiber, Handspun Skein (One Ply)**

**Division F - Mill Processed Fiber, Handspun Skein (One Ply)**

**Division G - Hand Processed Fiber, Handspun Skein (Two Ply)**

**Division H - Mill Processed Fiber, Handspun Skein (Two Ply)**

**Division I - Hand Processed Fiber, Handspun Skein (Three Ply)**

**Division J - Mill Processed Fiber, Handspun Skein (Three Ply)**

**Division K - Hand Processed Fiber, Handspun Skein (Four or more Ply-Specify)**

**Division L - Mill Processed Fiber, Handspun Skein (Four or more Ply-Specify)**

**Division M - Jr. 11 & under, Handspun Skein**

**Division N - Junior 12-17, Handspun Skein**

**Division O - Special Abilities, Handspun Skein**

\*NOTE Skeins are to be 25-50 yards in length.

Use four (4) ties in figure 8 configuration, self-tied

or with compatible yarn. Fiber content and use of finished skein must be specified on a hanging tag attached to the skein.

Divisions E – O Class Nos.

01. 100% Wool from Sheep
02. 100% Wool from Alpaca or Llama
03. Wool Blend
04. Exotic (such as Silk, Angora, Mohair, Qiviut, etc.)
05. Plant Fiber (such as Hemp, Flax, Cotton, etc.)
06. Novelty Yarn (May contain up to 20% Synthetic Material)
07. Hand Dyed

**Division P - 100% Wool from Sheep,**

**Handspun, Knitted**

**Division Q - 100% Wool from Alpaca or Llama,**

**Handspun, Knitted**

**Division R - Wool Blend, Handspun, Knitted**

**Division S - Exotic (such as Angora, Mohair,**

**Qiviut, Silk, etc.), Handspun, Knitted**

**Division T - Plant Fiber (such as Cotton,**

**Hemp, Flax, etc.) Handspun, Knitted**

**Division U - Colorwork, Handspun, Knitted**

**Division V - Hand Dyed, Handspun, Knitted**

**Division W - Handspun, Crocheted**

**Division X - Junior 11 & under, Handspun,**

**Knitted or Crocheted**

**Division Y - Junior 12-17, Handspun, Knitted**

**or Crocheted**

**Division Z - Special Abilities, Handspun,**

**Knitted or Crocheted**

Divisions P – Z Class Nos.

01. Baby/Child's Clothing
02. Hat or Headband
03. Mittens or Gloves
04. Scarf or Cowl
05. Hat, Scarf/Cowl, Mittens/Gloves - Set of 2 or 3 items
06. Socks
07. Shawl
08. Sweater
09. Garment
10. Novelty Yarn (May contain up to 20% synthetic material)
11. Any Household Item
12. Other item not specified above

**Division ZA - 100% Wool from Sheep,**

**Commercially Spun, Knitted**

**Division ZB - 100% Wool from Alpaca or**

**Llama, Commercially Spun, Knitted**

**Division ZC - Wool Blend, Commercially Spun,**

**Knitted**

**Division ZD - Exotic (such as Angora, Mohair,**

**Qiviut, Silk, etc.), Commercially Spun, Knitted**

**Division ZE - Plant Fiber (such as Cotton,**

**Hemp, Flax, etc.), Commercially Spun, Knitted**

**Division ZF - Colorwork, Commercially Spun,**

**Knitted**

**Division ZG - Hand Dyed, Commercially Spun,**

**Knitted**

**Division ZH - Commercially Spun, Crocheted**

**Division ZI - Junior 11 and under,**

**Commercially Spun, Knitted or Crocheted**

**Division ZJ - Junior 12-17, Commercially Spun,**

**Knitted or Crocheted**

**Division ZK - Special Abilities, Commercially Spun, Knitted or Crocheted**

Divisions ZA-ZK Class Nos.

01. Baby/Child's Clothing
02. Hat or Headband
03. Mittens or Gloves
04. Scarf or Cowl
05. Hat, Scarf/Cowl, Mittens/Gloves - Set of 2 or 3 items
06. Socks
07. Shawl
08. Sweater
09. Garment
10. Any Household Item
11. Other item not specified above

**Division ZL - Handspun, Hand-Woven**

**Division ZM - Commercially Spun, Hand-Woven**

**Division ZN - Junior 11 and under, Hand-Woven**

**Division ZO - Junior 12-17, Hand-Woven**

**Division ZP - Special Needs, Hand-Woven**

Divisions ZL-ZP Class Nos.

01. Shawl or scarf
02. Garment
03. Towel (Kitchen, bath, hand)
04. Table linen (runner, placemat, napkin)
05. Other Household item (pillow, blanket, etc.)
06. Rug, tapestry, wall hanging, etc.
07. Other items not specified above

**Division ZQ - Baskets, All natural materials (such as fiber, grass, pine needles, etc.)**

**Division ZR - Junior 11 and under, Baskets**

**Division ZS - Junior 12-17, Baskets**

**Division ZT - Special Needs, Baskets**

Divisions ZQ-ZT Class Nos.

01. Coiled
02. Hand-woven, Miniature (Under 4" diameter)
03. Hand-woven, Small (4"-12" diameter)
04. Hand-woven, Medium (Over 12"-24" diameter)
05. Hand-woven, Large (Over 24" diameter)

**Division ZU - Handmade Wet Felt**

**Division ZV - Needle Felted**

**Division ZW - Knitted, Crocheted or Woven, then Felted**

**Division ZX - Junior 11 and under, Felted**

**Division ZY - Junior 12-17, Felted**

**Division ZZ - Special Needs, Felted**

Divisions ZU-ZZ Class Nos.

01. Household Item
02. Garment
03. Hat
04. Purse or Bag
05. Wall hanging
06. 3D, for example Animal, Sculpture, etc.
07. Other



## Spinners Challenge Fiber 2025

### HANDSPUN WOOL SINGLES

Spinners Challenge consists of handspun single ply wool fiber displayed as a finished item (not just spun fiber). **Finished product must be made from spun singles, at least 50% made from wool singles.** Fiber content used must be stated on a hanging tag on the exhibit. **All entries must be shown and judged in a regular division in the Natural Fiber department.**

Selection of winner will be made with strong consideration given to creativity, quality of spinning, suitability of yarn to the final project and overall quality of the work. **\*Please notify the Superintendent on entry day that item is a "Spinners Challenge".**

### Scorecard for Judging Spinners Challenge Creativity:

Originality of design & technique; Use of color & texture.....	40%
<b>Spinning Quality:</b>	
Consistency of twist.....	10%
Size of yarn appropriate to fiber used & finished product.....	20%
Finished project demonstrates appropriate use of spun yarn.....	20%
<b>Finishing:</b>	
Blocking, fulling, seaming & embellishment appropriate for finished item.....	10%
<b>Total.....</b>	<b>100%</b>

### SPINNERS CHALLENGE 2026: Drop/Supported Spindle Spun Fiber

GRAND CHAMPION - ROSETTE  
RESERVE GRAND CHAMPION – ROSETTE

## DEPARTMENT 22 Photography



Sponsored by Field of Screams MT

### Superintendents:

Norma Pfaff • (406) 360-6670  
Trish Becker • (406) 381-3240

**PREMIUMS: \$4.00; \$3.00; \$2.00**

### RULES AND REGULATIONS

Refer to General Rules & Regulations.

- 8"x10" or 8"x12". NO EXCEPTIONS.
- Photo must be securely taped to mat. 11"x14", Mat Frame Required – secure photo with masking tape (backer is recommended not required)
- Mats are available for purchase at the Fair Office, while supplies last. Black only. You must mount the photo to the mat on your own. Cost:  
\$3 for 8x10  
\$4 for 8x12
- NOT ACCEPTED:** frames, wood, metal, glass, shrink wrap. NO EXCEPTIONS.
- Tag placement: upper left corner
- Requirement for photo pick up: detachable section of claim tag
- Clearly print your name and phone number on

- back of each mat frame.
- Maximum 4 entries per person total.
- Maximum 1 entry per class per person.
- Class #24 & #25 – Please provide a 4"x6" original photo

### SPECIAL THANKS!

**The Rapp Family Foundation, Rosie Huckstadt, & Norma Lee Pfaff Fine Art**

New professional displays were made possible through the generosity of these donors. Thank you!

### HELPFUL PHOTOGRAPHY TIPS:

- Use a tripod for a sharp photo
- Use the rule of thirds
- Ask, "Why am I taking this shot?" Will others like it? Ask a friend if they like it.
- Look at similar photos online that are popular
- Follow fundamentals of Photography; Exposure, Light/Color Balance, Focus, Depth-of-field, and Composition

### PHOTOGRAPHY SPECIAL PREMIUMS:

**Wide Angle Photography** - \$50 gift certificate to the Grand Champion  
**Cassity Patterson** - \$25 cash to the Reserve Grand Champion  
**Norma Lee Pfaff Fine Art** - \$15 cash to the Best Beginner of all Divisions  
**Norma Lee Pfaff Fine Art** - \$15 cash to the Best Intermediate of all Divisions  
**Norma Lee Pfaff Fine Art** - \$15 cash to the Best Advanced of all Divisions  
**Norma Lee Pfaff Fine Art** - \$15 cash to the Best Person with a Disability entrant of all Divisions  
**Trish Becker** – Pocket Photographer Book to the Best Beginner of Class 8, Nature, Birds, Wild Animals  
**Field of Screams** – 2 passes to the Best Beginner in Class 2, Sports  
**Field of Screams** – 2 passes to the Best Beginner in Class 12, Macro/Close-up  
**Field of Screams** – 2 passes to Best Beginner in Class 14, People Portraits  
**Melissa Saville** – Dog Photo Frame to the Best of Class 11, Domestic Animal

### PHOTOGRAPHY ELIGIBILITY

Each artist must enter one of four divisions:

- Beginner** – a beginning photographer is someone who is new to photography or has little experience with photography equipment. Should have a basic understanding of photography, equipment, and techniques.
- Intermediate** – Someone who is comfortable using a camera and is starting to add their own style to their photos. They have moved camera settings, understand how to arrange subjects and use light to create compelling images and try new techniques.

- Advanced** – a photographer who has a unique style and high level of technical skills. Knowledgeable about equipment, lighting, composition and editing, understand exposure settings and focus techniques. They cannot be a professions teacher's organization, have a resale license, or sell finished photos.
- Person with a Disability** – a photographer with a disability. Someone who possesses a passion for capturing images, telling stories, and expressing their unique perspectives.

### Division A(a) – Beginner DSLR, Mirrorless, or Film Camera

### Division A(b) – Intermediate DSLR, Mirrorless, or Film Camera

### Division A(c) – Advanced DSLR, Mirrorless, or Film Camera

### Division A(d) – Person with a Disability DSLR, Mirrorless, or Film Camera

Any photo shot with **DSLR, Mirrorless or film camera.** (Cell phone & Go-Pro has its own category) Photos may be cropped, straightened, corrected for exposure and white balance. Please have photo look as natural as possible. Adobe Lightroom & Photoshop and other post processing programs accepted. Do not over edit.

### SPECIAL PREMIUM:

**Cassity Patterson** - \$25 cash to the Best of Division A

### Division B (a) – Beginner Cell Phone, Go-Pro, Tablets, Electronic Devices

### Division B(b) – Intermediate Cell Phone, Go-Pro, Tablets, Electronic Devices

### Division B(c) – Advanced Cell Phone, Go-Pro, Tablets, Electronic Devices

### Division B(d) – Person with a Disability Cell Phone, Go-Pro, Tablets, Electronic Devices

Any photo shot with **CELL PHONE, GO-PRO, TABLETS, ELECTRONIC DEVICES** (or comparable). Same rules under Division A.

### SPECIAL PREMIUM:

**Cassity Patterson** - \$25 cash to the Best of Division B

### Division C(a) – Beginner Black and White, any camera

### Division C(b) – Intermediate Black and White, any camera

### Division C(c) – Advanced Black and White, any camera

### Division C(d) – Person with a Disability Black and White, any camera

A **Black and White** photo shot with ANY camera. Same rules under Division A.

### SPECIAL PREMIUM:

**Cassity Patterson** - \$25 cash to the Best of Division C

**Division D(a) – Beginner Color, any camera**  
**Division D(b) – Intermediate Color, any camera**  
**Division D(c) – Advanced Color, any camera**  
**Division D(d) Person with a Disability Color, any camera**

Color taken with ANY camera. Follow same rules as Division A & B.

**Class Nos. for ALL photography divisions**

01. Action – anything in motion, not people or sports
02. Sports – includes all sports, including Rodeo and Fair.
03. Architecture
04. Cityscape
05. Landscape - Keep it as natural as possible. Old barns, farm equipment & buildings acceptable.
06. Nightscape - Milky Way, star trails, moon or any object or image taken at night.
07. Waterscape, Rivers, & Streams - The water should be the focus of this shot. Moving, still, reflection, etc. Use a tripod with a 1/5 sec shutter speed or longer. Any ND or Polarizer filter accepted
08. Nature, Birds, Wild Animals – any bird or animal in the wild. Use a faster shutter speed to catch them in action.
09. Sunrise/Sunset - Try exposure blending
10. Photojournalism - Photo must tell a story
11. Domestic Animals - Pets or Livestock
12. Macro/Close-up – all subjects showing great detail. Includes flowers of all kinds, bugs, and insects.
13. People in Motion – groups playing, working, emotion, etc.
14. People Portraits – posed or unposed shots. Use of light to create shadows. Get creative.
15. Abstract – Shapes, colors, and light that are pleasing to the eye.
16. Weather – Any subject: rainbows, lightning, clouds, rain, snow, etc. Weather must be the focus of the shot
17. Foreign Travel
18. Wheeled Vehicles

**GRAND CHAMPION - ROSETTE**

**RESERVE GRAND CHAMPION - ROSETTE**

**DEPARTMENT 23**

**Poetry**



Sponsored by Poesy Pond Publications & Superintendent

Dominic Farrenkopf • (406) 369-1588

**PREMIUMS: \$4.00; \$3.00; \$2.00**

**Special Awards:**

Northstar Amusements Carnival Passes awarded to 1<sup>st</sup>, 2<sup>nd</sup>, & 3<sup>rd</sup> place K-6 Grade and 7-12 Grade. Chapter One Bookstore Gift Certificates awarded for 1<sup>st</sup>, 2<sup>nd</sup>, & 3<sup>rd</sup> place 18 years & older

The top 7 finalists will read their poems on the free stage Wednesday, August 27, from 5 – 6 p.m.

**RULES AND REGULATIONS**

1. Please submit a cover sheet with your name, phone number, email address, mailing address, and age along with your poem
2. Please DO NOT put name and/or dedication on actual poem.
3. Please submit no more than 2 poems.
4. **All Poems are due Friday August 8 by 5 p.m. in the Fair Office.**

Division A - K-6 Grade

Division B - 7-12 Grade

Division C - 18 years & older

Class No.

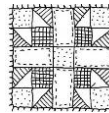
1. Any subject (non-graphic)

**GRAND CHAMPION - ROSETTE**

**RESERVE GRAND CHAMPION – ROSETTE**

**DEPARTMENT 24**

**Quilting**



**Sponsored by Mountain Thistle Quilts**

**Superintendents:**

Tammy Meamber • (925) 914-7464

Claudia Williams • (406) 370-0615

**PREMIUMS: \$4.00, \$3.00, \$2.00**

**SPECIAL PREMIUMS:**

**Superintendent's Choice** - \$50

**Viewer's Choice** - \$50

**A Clean Stitch** - 2 Gift Certificates – Full cleaning/maintenance valued at \$150 each

**A Confident Stitch** - \$25.00 Gift Certificate

**Aunt B's Country Fabric & Embroidery**

- Gift Basket

**Bitterroot Country Retreat** - \$25 Gift

Certificate

**Bitterroot Quilters Guild** - \$100 cash

**Mountain Thistle Quilts** - \$25 Gift

Certificate

**Patricia Richie** - \$25 cash

**Sapphire Quilt Club** - \$75

**Sew Feathers Custom** - Quilting services valued at \$100

**Valley Drug & Variety** - Gift basket

*Vicki's Quilts Down Under*: Gift Basket

**RULES AND REGULATIONS**

1. Refer to General Rules & Regulations.
2. An article that has been previously entered in the Ravalli County Fair is NOT eligible for entry.
3. **Exhibitors are limited to ONE ENTRY per class number.**
4. **ENTRIES MAY NOT BE SOLD DURING FAIR.**
5. **Please indicate quilt dimensions on Entry Form or under Comments online.**
6. Quilt labels must be covered; pin on a piece of fabric or use painter's tape.

7. If quilted by another, please put the quilter's name on the Entry Form or under Comments online.
8. JUDGING is closed to the public due to other departments judging as well.

**Division A - Hand Quilting**

Class No.

01. Hand pieced - hand quilted
02. Machine pieced - hand quilted
03. Mixed Technique - pieced & hand appliqué
04. Promise Stitch
05. Other

**Division B - Machine Pieced and Quilted on a Domestic Machine\***

\*A domestic machine is defined as having an arm of 15 inches or less, not mounted on a frame.

Class No.

01. Hand Appliqué
02. Machine Appliqué
03. Mixed Technique (machine pieced & appliqué and/or hand embroidered elements)
04. Scrappy
05. Medallion
06. T-Shirt
07. Hand Embroidery
08. Machine Embroidery
09. Baby Quilt (45"x60" or less)
10. Small Quilt (perimeter under 200")
11. Bed Size Quilt (Twin, Full, Queen, or King)
12. English Paper Pieced
13. Paper Pieced
14. Antique
15. Wall Hanging (Includes rod pocket or hanging loops)
16. Group Quilt (Created by more than one person, i.e. round robin, block exchange, etc.)
17. Panels
18. Other

**Division C - Machine Pieced and Quilted on a Long Arm Machine\***

\* A long arm machine is defined as having an arm of 16 inches or more, mounted on a frame or table.

Class No.

01. Hand Appliqué
02. Machine Appliqué
03. Mixed Technique (machine pieced, appliqué, and/or hand embroidered elements)
04. Scrappy
05. Medallion
06. T-Shirt
07. Hand Embroidery
08. Machine Embroidery
09. Baby Quilt (45" x 60" or less)
10. Small Quilt (perimeter under 200")
11. Bed Size Quilt (Twin, Full, Queen, or King)
12. English Paper Pieced
13. Paper Pieced
14. Antique
15. Wall Hanging (includes rod pocket or hanging loops)