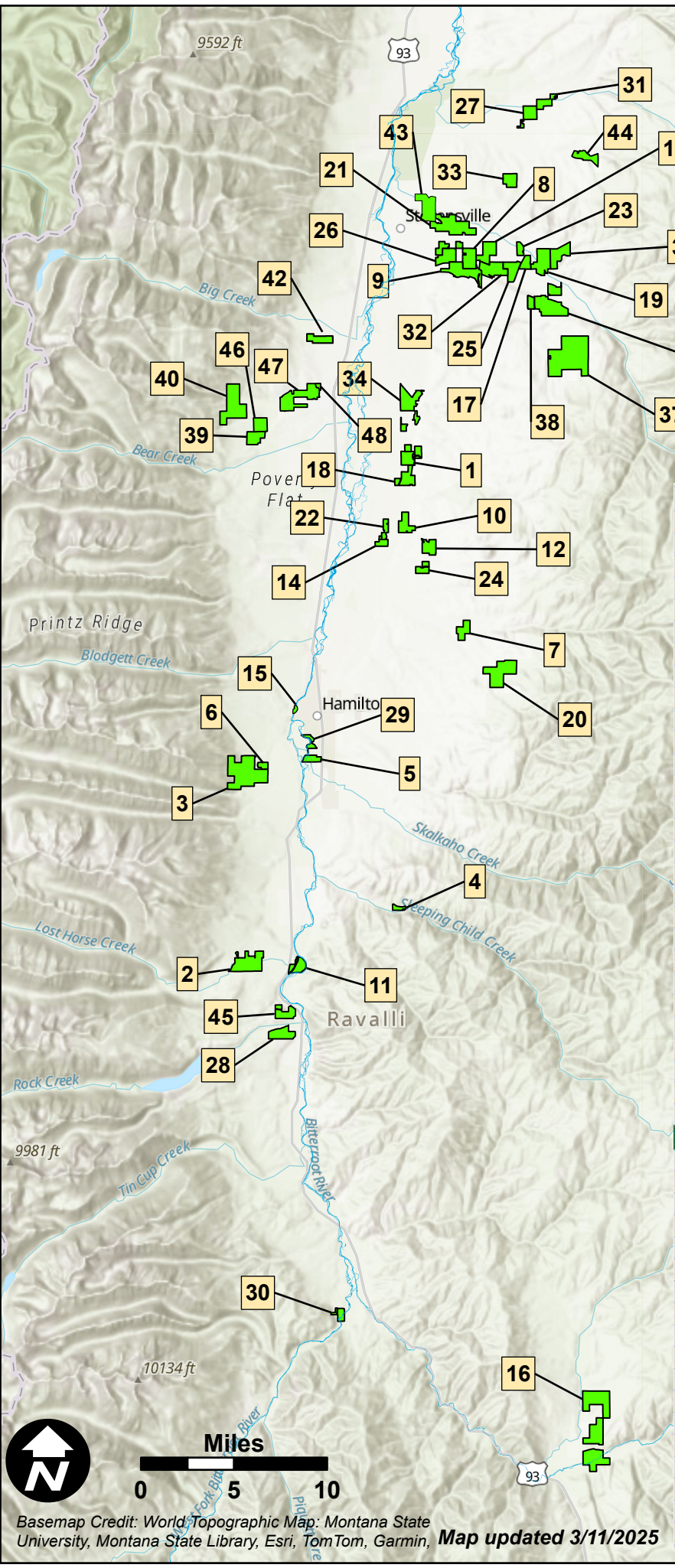
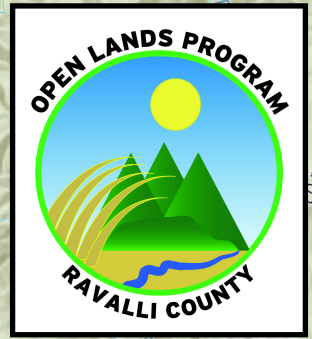
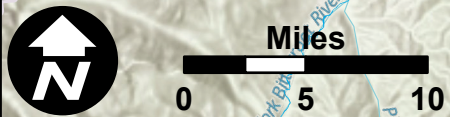


# Ravalli County Open Lands Program Conservation Projects



#	Project	Acres	Year
1	Wood Family Ranch	265	2009
2	Lost Horse Creek	428	2009
3	Sawtooth Ranch	840	2009
4	Bell Family Ranch	46	2010
5	Skalkaho Confluence	98	2010
6	Lodmell	55	2010
7	Triple J Bar	160	2011
8	Severson's Flying E Ranch	354	2011
9	Sunset Bench	365	2012
10	Popham Ranch	185	2012
11	KBK River Property	158	2013
12	Holloron Ranch	168	2013
13	St. Clair Ranch	244	2014
14	Gingerich Farm	74	2014
15	Steve Powell Park	22	2014
16	Lazy J Cross Ranch	1080	2015
17	Farrell (Kerslake) Ranch	93	2015
18	Bailey Farm	209	2015
19	Lazy Burnt Fork Ranch	334	2016
20	Weber Ranch	460	2016
21	Sixty-One Bar Ranch	507	2017
22	Auch Angus Ranch	84	2018
23	Hancock Ranch	74	2018
24	Curdy Farm	105	2018
25	Griffin Ranch (Burnham)	202	2019
26	Astle's Running Bear Ranch	217	2019
27	Gates Family Farm	160	2019
28	Paddock Ranch	216	2020
29	Skalkaho Bend Park	70.5	2020
30	C. Ben White Memorial FAS	96.5	2020
31	Mogan Farm	161	2020
32	South Burnt Fork Ranch	301	2021
33	Yoder Angus Ranch	150	2021
34	Sutherlin Farms	377	2021
35	Haywire Flats	258	2022
36	Triple D Ranch	420	2022
37	Rory R Ranch (Triple D II)	1260	2022
38	Mills Farm	71	2023
39	Roy Ranch	176	2024
40	Sweathouse Creek	540	2023
42	Buker Ranch	157	2025
43	Ellison Ranch	344	2024
44	Bolin Ranch	166	In-progress
45	Lazy KD Ranch	183	In-progress
46	Groff Timber Ranch	160	In-progress
47	Groff Farm	472	In-progress
48	Groff Park	21	In-progress



Basemap Credit: World Topographic Map: Montana State University, Montana State Library, Esri, TomTom, Garmin, Map updated 3/11/2025