



# Lolo Peak Fire Update

Sunday, September 10, 2017; 8:30 AM  
Northern Rockies Incident Management Team  
Doug Turman, Incident Commander

**Fire origin:** July 15, 2017, ten miles southwest of Lolo, MT.

**Fire Information:** (406) 272-5433 Hours: 7am – 9pm

**Email:** [LoloPeakFire@gmail.com](mailto:LoloPeakFire@gmail.com)

**Websites:** Inciweb: <http://inciweb.nwccg.gov/incident/5375>

Missoula County Sheriff: <http://tinyurl.com/ya93jpuf>

Ravalli County: <http://ravalli.us/557/Fire-Incident-Information>

**Facebook:** Bitterroot National Forest Facebook Page

Lolo National Forest Facebook Page

**Closures:** Closure orders are in effect for portions of the Bitterroot, Lolo and Nez Perce-Clearwater National Forests. Specific area closure information is available on those forest websites and Inciweb.

**Weather:** Gusty winds are predicted for Sunday.

**Evacuations:** No evacuation orders are currently in place for the Lolo Peak Fire.

**Warnings:** The evacuation warning for residents north of Tie Chute Lane has been rescinded. Evacuation warnings remain in place south of Highway 12 in Elk, Bear and Graves Creek areas as well as west of Highway 93 from Tie Chute Lane south to South Kootenai Creek Road.

For additional evacuation information, visit the Missoula County and Ravalli County Sheriffs' Facebook pages.

## HIGHWAYS ARE OPEN - 45 MPH SPEED LIMIT ON HIGHWAY 12 FROM ELK MEADOWS ROAD TO WOODMAN SCHOOL.

**Summary:** Firefighters worked to isolate the active burning on the west and southwest sides of the fire. Fire in Brushy Creek continued to back down but did not cross the creek. Crews pumped 60,000 gallons of water working to hold existing lines. Heavy equipment and crews completed the mechanical fire line along the Elk Meadows Road. Suppression crews repaired 1200 feet of dozer line along the Highway 12 corridor. Air operations resumed in the afternoon and helicopters were able to assist firefighters by dropping water to catch spot fires outside of the primary containment line. Fire was active overnight widening the buffer in the mouth of Sweeney Creek.

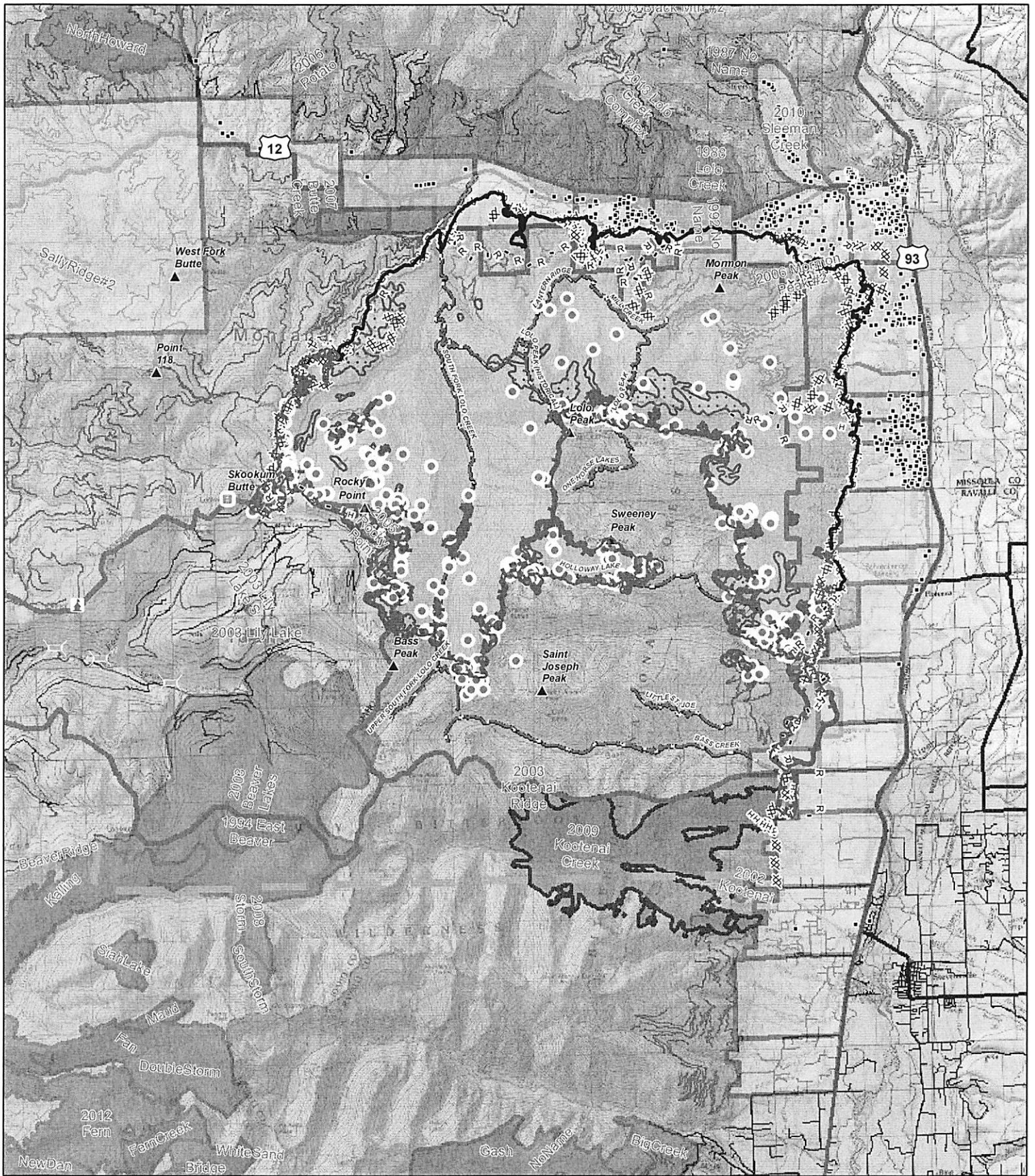
**Today:** Sustained ridge top winds are forecasted out of the west and southwest at 15 mph with gusts up to 30 until evening. Fire is still active on the west side. Crews will continue to address any spots fires and reinforce the fire line. Suppression repair will continue in the Highway 12 corridor. Weather permitting helicopters will assist firefighters with today's operations. The fire in the mouth of Sweeney Creek is still actively burning to widen the buffer between the fire and the valley floor.

**Fire Information Locations:** Staffed fire information locations are at Super 1 Foods in Stevensville and Farmers State Bank in Florence. Fire information is also available at the weigh station in Lolo at the corner of Highways 12 and 93.

**Stage II Fire Restrictions** are in effect for Missoula and Ravalli Counties and across the Lolo and Bitterroot National Forests. Additional information can be found on Inciweb.

**Jurisdiction:** The fire is under the jurisdiction of the Lolo and Bitterroot National Forests and the Montana Department of Natural Resources (MTDNRC). It is being managed under unified command consisting of Incident Commander Turman, Missoula Rural Fire Chief Newman and Ravalli County Fire Warden Mohn.

Incident Statistics	
Size:	50,476 acres
Containment	46 %
Injuries:	3
Fatalities:	1
Date detected:	July 15, 2017
Cause:	Lightning
Structures Threatened	278
Structures Lost (Residences)	2
Outbuildings Lost	8
Estimated cost	\$41.4 million
Resources	
Hand Crews:	10
Engines:	24
Helicopters:	5
Dozers:	4
Water tenders:	17
Total Personnel:	574

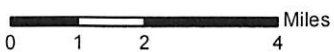


# Lolo Peak Fire Public Information Map

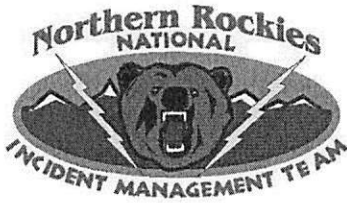
MT-LNF-001288  
September 10, 2017  
51,001 Acres



IR data from 09/09 at 2205 hrs  
 • IR Isolated Heat Sources  
 ■ IR Intense Heat  
 ■ IR Scattered Heat



- |                          |                         |                                                                             |
|--------------------------|-------------------------|-----------------------------------------------------------------------------|
| — Completed Line         | — Bridge                | — Road Closure                                                              |
| — Uncontrolled Fire Edge | — Brushy Fork Bridge    | — Trail Closures                                                            |
| ⊗ ⊗ Completed Dozer Line | ▲ Lost Park Warming Hut | — Temporary Flight Restriction - Includes Unmanned Aerial Vehicles (Drones) |
| H Completed Hand Line    | ■ Skookum Butte L.O.    | — Fire Perimeter                                                            |
| R Road as Completed Line | • Structures            | — Fire History 1980-Present                                                 |
| — Planned Fire Line      | ■ Evacuation Warning    | ■ Forest Service                                                            |
|                          | ■ Evacuation Zone       |                                                                             |
|                          | ■ Closure Area          |                                                                             |



# Lolo Peak Fire Update

Friday, September 8, 2017; 8:30 AM  
Northern Rockies Incident Management Team  
Doug Turman, Incident Commander

**Fire origin:** July 15, 2017, ten miles southwest of Lolo, MT.

**Fire Information:** (406) 272-5433 Hours: 7am – 9pm

**Email:** [LoloPeakFire@gmail.com](mailto:LoloPeakFire@gmail.com)

**Websites:** Inciweb: <http://inciweb.nwccg.gov/incident/5375>

Missoula County Sheriff: <http://tinyurl.com/ya93jpuf>

Ravalli County: <http://ravalli.us/557/Fire-Incident-Information>

**Facebook:** Bitterroot National Forest Facebook Page

Lolo National Forest Facebook Page

**Closures:** Closure orders are in effect for portions of the Bitterroot, Lolo and Nez Perce-Clearwater National Forests. Specific area closure information is available on those forest websites and inciweb.

**Weather:** The stagnant weather pattern causing the heavy inversions should begin to change this afternoon. A low pressure system over southern Canada will bring strong westerly winds Saturday and Sunday.

**Evacuations:** No evacuation orders are currently in place for the Lolo Peak Fire.

**Warnings:** The evacuation warning for residents north of Tie Chute Lane has been rescinded. Evacuation warnings remain in place south of Highway 12 in Elk, Bear and Graves Creek areas as well as west of Highway 93 from Tie Chute Lane south to South Kootenai Creek Road.

For additional evacuation information, visit the Missoula County and Ravalli County Sheriffs' Facebook pages.

**HIGHWAYS ARE OPEN - 45 MPH SPEED LIMIT ON HIGHWAY 12 FROM ELK MEADOWS ROAD TO WOODMAN SCHOOL.**

**Summary:** There were pockets of fire activity throughout most of the fire area. The inversion and fog kept visibility low in the valley. Firefighters worked along the west side of the fire to contain two spot fires south of the 373 Road. The fire moved out of the South Fork of Lolo Creek into Brushy Creek. Hand-ignition burnout operations continued through the night to complete work ahead of the strong winds predicted for the weekend. The structure protection group wrapped the Skookum Butte fire lookout tower on the Montana/Idaho Border.

**Today:** The inversion is expected lift this afternoon. Weather conditions are changing above the inversion with increased winds expected associated with a low pressure front moving through the fire area. National Guard fire crews arrived and will work on the west side of the fire. Firefighters will use hand-ignition to bring the fire down the south slope in Sweeney Creek connecting it to the previously burned area. The plan is for the burned area to be wide enough to prevent the fire spotting out of the perimeter in anticipation of increased westerly winds over the weekend.

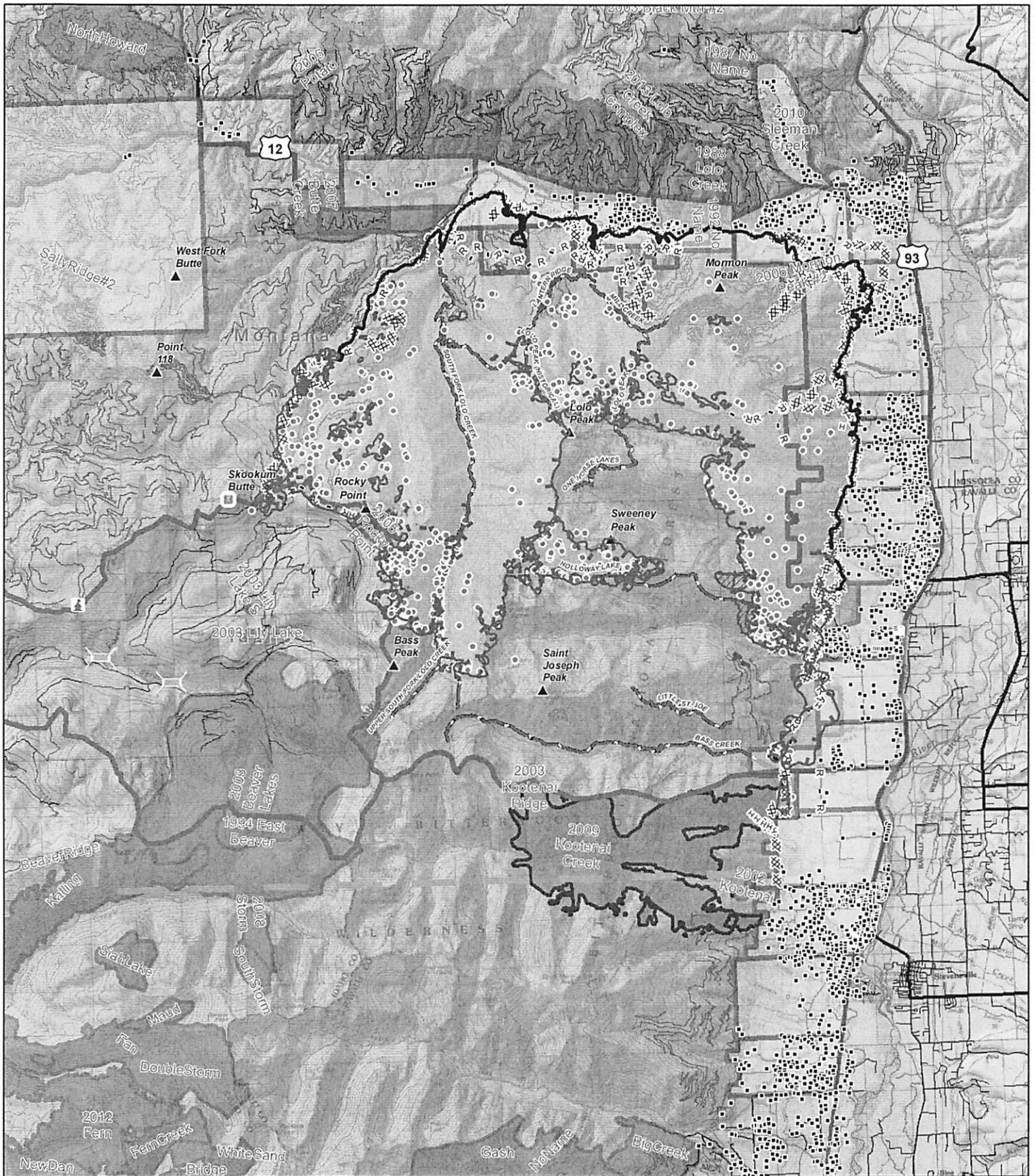
**Fire Information Locations:** Staffed fire information locations are at Super 1 Foods in Stevensville and Farmers State Bank in Florence. Fire information is also available at the weigh station in Lolo at the corner of Highways 12 and 93.

**Firewise:** Visit [www.Firewise.org](http://www.Firewise.org) for information on how to protect your home, structures and property from wildfire.

**Stage II Fire Restrictions** are in effect for Missoula and Ravalli Counties and across the Lolo and Bitterroot National Forests. Additional information can be found on Inciweb.

**Jurisdiction:** The fire is under the jurisdiction of the Lolo and Bitterroot National Forests and the Montana Department of Natural Resources (MTDNRC). It is being managed under unified command consisting of Incident Commander Turman, Missoula Rural Fire Chief Newman and Ravalli County Fire Warden Mohn.

Incident Statistics	
Size:	49,123 acres
Containment	35 %
Injuries:	3
Fatalities:	1
Date detected:	July 15, 2017
Cause:	Lightning
Structures Threatened	278
Structures Lost (Residences)	2
Outbuildings Lost	8
Estimated cost	\$40.1 million
Resources	
Hand Crews:	10
Engines:	25
Helicopters:	5
Dozers:	4
Water tenders:	17
Total Personnel:	432



# Lolo Peak Fire Public Information Map

MT-LNF-001288  
September 09, 2017  
49,910



IR data from 09/08 at 0052 hrs  
 • IR Isolated Heat Sources  
 ■ IR Intense Heat  
 □ IR Scattered Heat

- |       |                        |   |                       |   |                                                                           |
|-------|------------------------|---|-----------------------|---|---------------------------------------------------------------------------|
| XX XX | Completed Dozer Line   | ▲ | Lost Park Warming Hut | — | Trail Closures                                                            |
| H ■   | Completed Hand Line    | ■ | Skookum Butte L.O.    | ⌋ | Temporary Flight Restriction - Includes Unmanned Aerial Vehicles (Drones) |
| R -   | Road as Completed Line | • | Structures            | ▭ | Fire Perimeter                                                            |
| —     | Planned Fire Line      | □ | Evacuation Warning    | ▭ | Fire History 1980-Present                                                 |
| —     | Bridge                 | □ | Evacuation Zone       | ▭ | Forest Service                                                            |
|       |                        | □ | Closure Area          |   |                                                                           |
|       |                        | — | Road Closure          |   |                                                                           |