



# Lolo Peak Fire Update

Wednesday, September 7, 2017; 8:30 AM  
Northern Rockies Incident Management Team  
Doug Turman, Incident Commander

**Fire origin:** July 15, 2017, ten miles southwest of Lolo, MT.

**Fire Information:** (406) 272-5433 Hours: 7am – 9pm

**Email:** [LoloPeakFire@gmail.com](mailto:LoloPeakFire@gmail.com)

**Websites:** Inciweb: <http://inciweb.nwccg.gov/incident/5375>

Missoula County Sheriff: <http://tinyurl.com/ya93jpuf>

Ravalli County: <http://ravalli.us/557/Fire-Incident-Information>

**Facebook:** Bitterroot National Forest Facebook Page

Lolo National Forest Facebook Page

**Closures:** Closure orders are in effect for portions of the Bitterroot, Lolo, and Nez Perce-Clearwater National Forests. Specific closure information is available on those forest websites and InciWeb.

**Weather:** A stagnant weather pattern with heavy inversions is forecast for the next two days. A low pressure system over southern Canada could bring strong westerly winds Saturday or Sunday.

**Evacuations:** No evacuation orders are currently in place.

**Warnings:** The evacuation warning for residents north of Tie Chute Lane has been rescinded. Evacuation warnings remain in place south of Hwy 12 in the Elk, Bear and Graves creek areas as well as west of Hwy 93 between Tie Chute Lane south to South Kootenai Creek Road.

For additional evacuation information, visit the Missoula County and Ravalli County Sheriffs' Facebook pages.

## HIGHWAYS ARE OPEN - 45 MPH SPEED LIMIT ON HIGHWAY 12 FROM ELK MEADOWS ROAD TO WOODMAN SCHOOL.

**Summary:** The inversion and low visibility due to smoke halted air operations yesterday and likely again today. Heavy equipment and ground crews were successful in cleaning up a 120 acre burnout operation on the north slope of Bass Creek and gained ground on hot spots in the northwestern edge of the fire near Elk Meadows Road. Suppression repair work continued on the north side of the fire. Structure assessments are complete.

**Today:** Conditions should allow for burnout operations south of Bass Creek. Burnout operations create a buffer from high intensity fire impacting residences and other high value resources. Crews are finishing up a line south of Kootenai Creek that ties into the 2009 Kootenai fire area. Dozer line, sprinkler sets and mop up will continue along Elk Meadows Road. Suppression repair work will continue elsewhere around the fire.

**Firewise:** Visit [www.Firewise.org](http://www.Firewise.org) for information on how to protect your home, structures and property from wildfire.

**Fire Information Locations:** Super 1 Foods in Stevensville, Farmers State Bank in Florence, and the weigh station in Lolo at the corner of Highways 12 and 93.

**Stage II Fire Restrictions** are in effect for Missoula and Ravalli Counties and across the Lolo and Bitterroot National Forests. Additional information can be found on Inciweb.

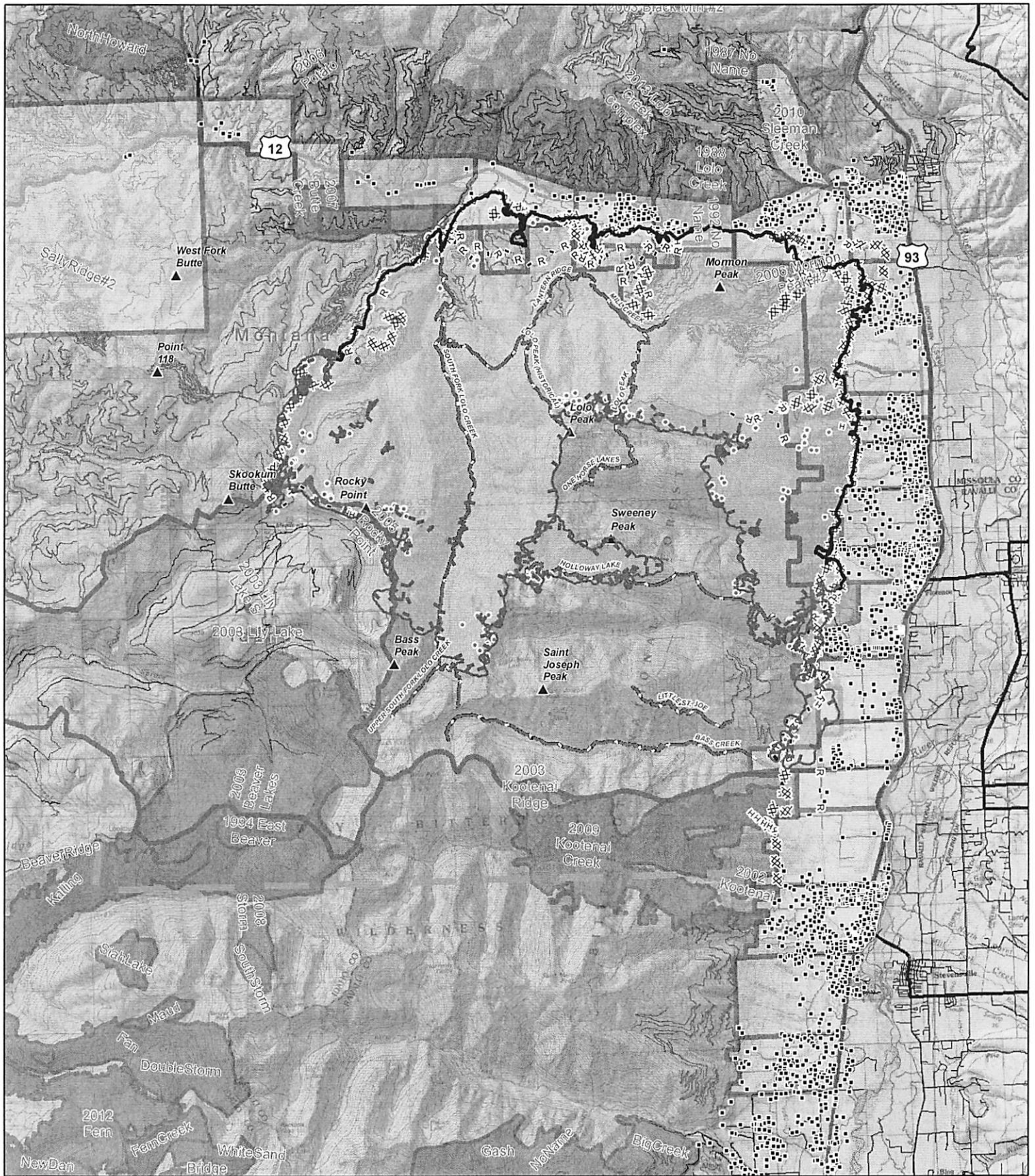
**Cooperators:** Stevensville, Ravalli & Missoula County Government; Ravalli and Missoula County Sheriffs' Offices; Missoula Rural Fire; Florence VFD; Florence – Carlton School District; Nez Perce Tribe; Confederated Salish and Kootenai Tribes; MDOT; Carlton and Bass Lake Irrigation; Ravalli and Missoula County DES; Private Landowners.

### Incident Statistics

Size:	48,686 acres
Containment	35 %
Injuries:	3
Fatalities:	1
Date detected:	July 15, 2017
Cause:	Lightning
Structures Threatened	530
Structures Lost (Residences)	2
Outbuildings Lost	8
Estimated cost	\$39.6 million

### Resources

Hand Crews:	3
Engines:	25
Helicopters:	5
Dozers:	4
Water tenders:	17
Total Personnel:	415



# Lolo Peak Fire Public Information Map

MT-LNF-001288  
September 7, 2017  
49,123 Acres



IR data from 09/06 at 2159 hrs  
 • IR Isolated Heat Sources  
 ■ IR Intense Heat  
 ■ IR Scattered Heat

- |     |                        |   |                    |   |   |
|-----|------------------------|---|--------------------|---|---|
| ⊗ ⊗ | Completed Dozer Line   | □ | Evacuation Warning | ⌂ | Temporary Flight Restriction - Includes Unmanned Aerial Vehicles (Drones) |
| H   | Completed Hand Line    | □ | Evacuation Zone    | □ | Fire Perimeter  |
| R   | Road as Completed Line | □ | Closure Area       | □ | Fire History 1980-Present   |
| —   | Planned Fire Line      | — | Road Closure       | □ | Forest Service  |
| ■   | Structures             | — | Trail Closures     |   |   |