

Blodgett Lake

Blodgett Lake

MT-BRF-022252

P1P156 (0103)

Mill Lake

MT-BRF-022265

P1P1PL (0103)



September 20, 2022

Operational Period

0600 to 2130

Passcode for FTP: 022252

Incident Action Plan

INCIDENT OBJECTIVES	1. Incident Name Blodgett Lake, Mill Lake, Bear Creek, Big Creek, Kootenai Creek Fires	2. Date Prepared 9/19/22	3. Time Prepared 1800
	4. Operational Period		

Tuesday, September 20, 2022 DAY SHIFT

Intent, Objectives

Commander's Intent

Success is defined as prioritizing fire fighter safety, minimizing potential impacts/threats to human populations, private land, infrastructure and other identified values; this is achieved by effective risk management and enhanced coordination.

Ensure that all incident actions reflect a commitment to aviation, responder, and public safety through using the risk management process outlined in the IRPG, adherence to the 10 Standard Firefighting Orders, mitigation of the 18 Situations That Shout Watch Out and LCES. If you cannot mitigate a tactical hazard to an acceptable level of risk, do not implement the corresponding tactical action until such time as the risk can be satisfactorily mitigated before re-engaging. Ensure this Commander's Intent is clearly communicated and understood by all resources.

Operational Objectives

Implementation of the following operational objectives is to be applied and accomplished only through managing risk to best assure firefighter safety.

1. Execute Point/Zone Protection strategies utilizing direct and indirect tactics to minimize impacts to values at risk and firefighter exposure.
2. Prevent or minimize fire impacts to these prioritized values: private property and infrastructure, Pinesdale community watershed within Sheafman Creek, and private irrigation infrastructure on NFS lands.
3. Provide Initial Attack within Selway-Bitterroot Wilderness. Outside of designated Wilderness, provide support as requested based upon resource availability and fire activity.
4. Consider operational strategies and tactics that minimize smoke impacts to sensitive areas and receptors. Follow guidance in State Smoke Management Plans and coordinate with State and local Air Quality Regulators.

Management Objectives

1. Provide timely and accurate dissemination of information to residents of Hamilton, Pinesdale, Corvallis, Victor, Stevensville and the jurisdictional agencies. Keep these entities informed of management goals, objectives, successes and challenges on the incident.
2. Protect and/or mitigate impacts to the identified values at risk as prioritized by the jurisdictional agencies. Operations personnel should coordinate with appropriate READ(s) to document; and, if necessary, coordinate mitigation measures related to watershed impacts, sensitive species, cultural sites, and minimize introduction and spread of noxious/exotic weeds and aquatic species.

Additional Commander's Intent

Communicate and coordinate incident management activities to ensure they are aligned with the overall goals of the requesting and cooperating agencies.

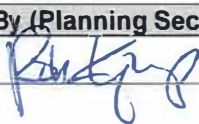
Treat all Incident Management personnel, cooperators, contractors and the local public with dignity and respect creating a "no tolerance" atmosphere for harassment, discrimination, alcohol, or federally prohibited substances.

8. ATTACHMENTS (X IF ATTACHED)

- | | |
|---|---|
| <input checked="" type="checkbox"/> ICS 203 | <input checked="" type="checkbox"/> Weather Forecast/Fire Behavior Analysis |
| <input checked="" type="checkbox"/> ICS 204 | <input checked="" type="checkbox"/> Safety Message |
| <input checked="" type="checkbox"/> ICS 205 | <input checked="" type="checkbox"/> Weather Forecast/Fire Behavior Analysis |
| <input checked="" type="checkbox"/> ICS 206 | <input checked="" type="checkbox"/> 8 Line – Medical Incident Report |
| <input checked="" type="checkbox"/> ICS 220 | |

9. Prepared By (Planning Section Chief)

Rob Gump
ICS 202



10. Approved By (Incident Commander)

Brent Olson





Fire Weather Forecast

FORECAST NO: 6
 PREDICTION FOR: Tuesday Shift
 SHIFT DATE: September 20, 2022
 FORECAST ISSUED: 2000 September 19, 2022

NAME OF FIRE: Blodgett Lake
 UNIT: MT-BRF / Nrn Rockies Team 1
 Phone Number: (240) 778-5312
 Incident Meteorologist: Ryan Leach

***** STRONG NORTH-NORTHEAST WINDS TODAY – COLD TOMORROW MORNING *****

WEATHER DISCUSSION: Today a dry cold front will drop out of the north causing north and northeast winds today. The cold front will also cause much cooler temperatures, with Wednesday morning lows in the 30s. Heavy rain is still coming Wednesday night, see the extended discussion below for more details.

WEATHER FORECAST TODAY (TUESDAY):

	Slopes (7,500 ft)	Valley (5,000 ft)	ICP (3,500 ft)
Max/Min Temp.	49-54F / 35-40F	59-64F / 38-43F	67-72F / 34-39F
Min/Max RH	55-65% / 75-85%	50-60% / 70-80%	45-55% / 85-95%
Winds (20 foot)	Northeast 9-14 mph in the morning increasing through the day to northeast 18 mph gusting 28 mph in the evening.	Northeast 7-11 mph in the morning increasing through the day to northeast 18 mph gusting 28 mph in the evening.	Northeast 3-5 mph in the morning increasing through the day to northeast 16 mph gusting 28 mph in the evening.
Notes	15% chance of rain in the afternoon and 5% chance wetting rain.	15% chance of rain in the afternoon and 5% chance wetting rain.	10% chance of rain in the afternoon and 5% chance wetting rain.

WEATHER: Mostly sunny.

LAL: 1 **CWR:** 5% **HAINES:** 3

STABILITY / INVERSION: Inversion break on ridges around 1200 MDT. Mixing height 2,000 ft AGL.

SMOKE TRANSPORT: East to west at 15 mph.

OUTLOOK FOR WEDNESDAY: Increasing clouds with evening thunderstorms, 25% chance of lightning.

Max Temps: 64 - 69F at 5,000 ft. Min RH: 50-60%. Max RH: 90-100%.

Valley Wind: east 7-11 mph. Ridge Winds: northeast 12-16 mph.

LAL 2. CWR 80%. Haines 4.

THREE DAY EXTENDED (THURSDAY – SATURDAY 5,000 FT)

	<u>Max T</u>	<u>Min RH</u>	<u>Max RH</u>	<u>Ridge Winds, Afternoon</u>	<u>WX</u>
THU	49 – 54	90%	100%	SW 15 mph	Rain
FRI	55 – 60	55%	75%	W 14 mph	Cloudy
SAT	58 – 63	50%	55%	W 9 mph	Partly Cloudy

Extended Forecast Discussion: By Thursday evening there is a 98% chance of wetting rain, 80% chance of 1/2" or more, and a 37% chance of 1" or more of rain.

FIRE BEHAVIOR FORECAST

FORECAST NUMBER: #12

TYPE OF FIRE: Wildland Fire

FIRE NAME: Blodgett

OPERATIONAL PERIOD: Day 09/20/2022

DATE ISSUED: 09/19/2022

TIME ISSUED: 2000 hrs

UNIT: MT-BRF-022252

SIGNED: *Brian Anderson* FBAN

WEATHER

Seasonably warm and windy

[See Fire Weather Forecast for Details](#)

Fire Environment

Even with the recent moisture, 1000-hr fuel moistures taken from Don Mackay Point were between 6-8%. Lower elevation southern aspects are generally dominated by open canopy ponderosa pine with an occasional Douglas-fir, while northern slopes are dominated by closed canopy Douglas-fir/ponderosa pine. Brush fuels include ninebark pine which has cured and snowberry which has not cured yet. Above 6000 feet mixed conifer stands dominate with lodgepole pine/subalpine fir and a mix of Douglas-fir, ponderosa pine, and an occasional larch. Fuels are thick and continuous near the bottom of the drainage and as elevation increases so does the percentage of rock.

Forecast OHR : 50-60% FDFM: 8% PIG: 38-40% Haines: 3

FIRE BEHAVIOR

Overall: Fire behavior will be slow to start, smoke is not likely to show up until after 1400. Drying will continue as temperatures are again seasonably warm, however, Sunday's wetting rain will still have a moderating effect on today's fire behavior.

Blodgett and Mill Lake Fires: Fuels in the creek bottom are the most likely place for smoke to initially show up and will continue to smolder and creek for most of the burning period, due to the high relative humidity.

Bear and Big Creek Fires: Limited growth is expected again today. Potential for rollout causing spots does exist for today, but with a relatively low PIG significant spotting potential is low.

AIR OPERATIONS

Smoke is not likely to affect air operation today.

SAFETY

High winds do not care if you are near the fire line or not, snags will fall over either way.

Safety Message

ASSESSING RISK

Activities with the Highest Assessed Risk to Personnel

1. Driving and Traffic
2. Heavy Equipment Operations
3. Steep Terrain and Rolling Debris

What have YOU discussed within your group/crew/module regarding hazards in your assigned area regarding risk?

Is there something unique to your work area that you haven't encountered before?

Is there a work-related hazard you feel is a normal part of operations? If so, are you appropriately addressing that risk or have things started to relax a bit?



GLASBERGEN

DIVISION ASSIGNMENT LIST			Branch	Division/Group					
Incident Name			I	Charlie					
Blodgett Lake			Operational Period						
			Date:	9/20/2022	Time:	0600 to 2130			
Operations Personnel									
Operations Chief	Scott Schrenk / Bob Lippincott Justin Kaber (t) / Drew Daily (t) / Shawn Borgen (t)		Branch Director		Travis Pfister 406-250-0365 Jon Norman (t) 406-499-1242				
Safety Officer	Steve Hoppner / Persephone Whelan (t)		Division/Group Supervisor		Jeremy Kroeker 406-370-3100 LWD 9/23				
Resources Assigned This Period									
Strike Team/Task Force/ Resource Designator	Reg #	Last Shift	Leader	# Persons	Drop Off Point /Time	Pick Up Point / Time			
HC1 Bitterroot	C-5	9/22	Cache Gibbons	22	ICP 0630	ICP 2100			
TFLD	C-5.2	9/22	Matt Kosovich	1	ICP 0630	ICP 2100			
TFLD (t)	C-5.3	9/22	Geoffrey McEvers	1	ICP 0630	ICP 2100			
HEQB	O-9	9/26	Mark Troxel	1	ICP 0630	ICP 2100			
HEQB (t)	O-73	10/1	Tyler Knauth	1	ICP 0630	ICP 2100			
ENG5 MCS-E32	E-68	10/1	Brad Killmar	6	ICP 0630	ICP 2100			
EXC3 W/ MAST	E-3	9/23	Mark Christian	2	ICP 0630	ICP 2100			
EXC3 Flash Excavation	E-6	9/28	Gordon Eckel	1	ICP 0630	ICP 2100			
FEL1 Flanagan	E-4	9/23	Dale Flanagan	2	ICP 0630	ICP 2100			
FEL1 DS Jr. Trucking	E-7	9/28	Tom Harper	2	ICP 0630	ICP 2100			
SKG3 Tiberjack	E-5	9/24	Ethan Perelman	2	ICP 0630	ICP 2100			
SKG3 Enhanced Forest Management	E-8	9/26	Warren Odlin	2	ICP 0630	ICP 2100			
FORW Joe Hester Logging	E-9	9/28	Tanner Kosinski	2	ICP 0630	ICP 2100			
FORW Joe Hester Logging	E-10	9/25	Adam Irvine	2	ICP 0630	ICP 2100			
LOGT Grizzly Timber llc	E-69	10/1	Shane Conover	1	ICP 0630	ICP 2100			
LOGT Hester Logging	E-70	10/1	Kaleb Hester	1	ICP 0630	ICP 2100			
EMPF	O-41	9/30	Ayala Rahm	1	ICP 0630	ICP 2100			
EMTF	O-42	9/30	Josh Joyner	1	ICP 0630	ICP 2100			
Ambulance 2	E-56	9/30	Bobby Ward/Emmy Phillips	2	ICP 0630	ICP 2100			
THSP	O-11	9/25	Ryan Hughes	1	ICP 0630	ICP 2100			
READ			Jesse Bode	1	ICP 0630	ICP 2100			
Task: Continue working on indirect control line along FS/Private Boundary from Mill Creek South to Blodgett Canyon utilizing heavy equipment. In addition, continue to recon strategic line opportunities on FS/private/DNRC. Monitor fire behavior and movement as needed.									
Purpose: To establish a continuous fuel break from Mill Creek to Blodgett Canyon utilizing natural features when possible, and to establish indirect control features minimizing impact to natural resources.									
End State: A fire perimeter control feature is in place providing high probability of success for fire suppression resources should fire progression move downslope. Fire spread potential is limited minimizing or eliminating impacts to state/private lands. Values at risk are not impacted by fire.									
Special Instructions									
Coordinate with READ before heavy equipment use. Maintain coordination and public relations with private landowners and cooperators.									
Division/Group Communication Summary									
Function	Channel	Freq RX	Tone RX	Freq TX	Tone RX	Function	Channel	Freq RX	Freq TX
CMD	7	170.4250	127.3	168.0750	127.3	A/G Pri	13	173.9375	173.9375
TAC	2	166.7750	127.3	166.7750	127.3	A/G Sec	14	167.5250	167.5250
Prepared by Jennifer Carrel - RESL(t)		Approved By Rob Gump - PSC				Date 9/19/2022		Time 18:00	

AIR OPERATIONS SUMMARY 220		Prepared By: Dennis A. Morton	Prepared: 09/19/22	Prepared Time: 20:00 hrs.	
1. INCIDENT NAME: BLODGETT LAKE		2. OPERATIONAL PERIOD 09/20/22		START TIME: 0700	END TIME: 2100
			SUNRISE: 0721	SUNSET: 1938	

3. REMARKS (Safety Notes, Hazards, Air Operations Special Equipment, etc.). 1. Assess mission complexity and the Benefit vs Risk of the mission. 2. Ensure visibility and winds are adequate to safely conduct flight operations. 3. Ensure safe vertical & horizontal separation between aircraft in smoky conditions. 4. If you see a UAS on your division report it up the chain of command to Air Operations, it may or may not be a friendly! 5. Smoky conditions can hamper our aviation operations adhere to visibility limitations, and DO NOT be pressured into accepting a mission that you know, or feel is unsafe!			4. READY ALERT AIRCRAFT: TBD Air Ambulance: Life Flight - Missoula Tan 155.3400 (TT 156.7) See Medical Plan in the IAP		5. TFRs: N/A
---	--	--	---	--	---------------------

6. PERSONNEL	NAME	PHONE #	7. FREQUENCIES	AM	FM	8. FIXED-WING Avail/ Type/ Make-Model/ N#/ Base
AOBD	Dennis A. Morton	406-660-2318	A/A Blodgett A-3	123.6250		<i>AIRTANKERS: ORDER THRU AIR OPS OR DISPATCH IF AIR ATTACK IS NOT UP</i>
ASGS	Dave Moore	513-616-9162	A/G Primary Blodgett A-4		173.9375	
HEBM			A/G Sec Blodgett A-5		167.5250	
HEBM (T)			Deck		163.1000	
ATGS						ATGS Platforms: Order through Air Ops or Dispatch
			Forest Primary A/G #52		168.3875	
			Forest Secondary A/G #53		168.4875	
318MG Manager	Reggie Horel	715-577-4626	Bitterroot Forest North		169.6250 TT 146.2	Email daily Helicopter costs and CTR's to: <u>2022.blodgettlake.finance@firenet.gov</u>
			Bitterroot Forest South		170.3750 TT 131.8	
Bitterroot Helibase		406-361-3250	Tan/Life Flight A/G		155.3400 TT 156.7	Extraction: Order thru Air Ops or Dispatch Yellowstone Shorthaul in Butte, MT (Trail Cr.)
Bitterroot Aircraft Desk:		406-363-7133	Air Guard		168.6250 (110.9 TT)	Hoist: Two Bear Air @GPI (Kalispell) 2 hrs

9. HELICOPTERS ASSIGNED BLODGETT


FOREST, REGIONAL AIRCRAFT FOR LEND/LEASE

FAA N#	TY	MAKE/ MODEL	BASE	START	AVAIL	REMARKS	FAA N#	TY	MAKE/ MODEL	BASE	START	AVAIL	REMARKS
318MG	3	AS-350B3	Hamilton	0800	0830	Recon	303AJ	1	CH-47D	Stevensville	0800	0830	Bucket
							562AJ	1	CH-47	Hamilton	0800	0830	Tanked
							96EC	2	UH-1H	Hamilton	0800	0830	Tanked
							640MA	3	407HP	Hamilton	0800	0830	Forest IA

10. TASK/ MISSION/ ASSIGNMENT (Type/ function includes: Air Tactical, Retardant, Recon, Personnel Transport, Bucket Operations, SAR, etc.)					
TYPE/FUNCTION	PRIORITY	NAME OF PERSONNEL OR CARGO (If applicable) or instructions for tactical aircraft	MISSION START	FLY FROM	FLY TO
Buckets	3		As requested	Helibase	Fire
Slings	2		As requested	Helibase	Fire
Recon/PSD	1		As requested	Helibase	Fire

Helibase, Dip Sites, Pick Up Sites, etc.	
Hamilton Helibase(KHRF): N 46° 15.33' X W 114° 07.75' Elevation: 3640' CTAF128.8	
H1	46° 21.763 X 114° 15.317
H2	46° 20.090 X 114° 14.444
H3	46° 24.246 X 114° 14.748

Other Assigned Support Equipment

<p><u>REMINDER!!</u> A flight risk assessment (GAR) needs to be completed prior to daily missions</p> <p>Region 1 CWN Helicopter GAR</p>				

Wind Restrictions

Flights above ground level	Flight Permitted in Winds Less than / Maximum Gust Spread		
	Type 1 Helicopters	Type 2 Helicopters	Type 3 Helicopters
More than 500' AGL	<50kts / Gusts: N/A	<50kts / Gusts: N/A	<50kts / Gusts: N/A
Less than 500' AGL	<40kts / Max Gust Spread: 15kts	<40 kts / Max Gust Spread: 15kts	<30kts / Max Gust Spread: 15kts

“If we never look at the consequences of our behavior, we can always maintain the illusion of our competence.”

... The Logic of Failure

INCIDENT RADIO COMMUNICATIONS PLAN			Incident Name BLODGETT LAKE			Date/Time Prepared 9/19/2022			Operational Period Date/Time 9/20/2022 0600 - 2130		
Ch #	Function	Channel Name/Trunked Radio System Talkgroup	Assignment	RX Freq	N or W	RX Tone/NAC	TX Freq	N or W	Tx Tone/NAC	Mode A, D or M	Remarks
1	TACTICAL	TAC 1	DIV A	168.2500		127.3	168.2500		127.3	A	DIVISION ALPHA
2	TACTICAL	TAC 2	DIV C	166.7750		127.3	166.7750		127.3	A	DIVISION CHARLIE
3	TACTICAL	TAC 3	DIV E/G	166.7250		127.3	166.7250		127.3	A	DIVISION ECHO/GOLF
4	TACTICAL	TAC 4	UNASSIGNED	168.0500		127.3	168.0500		127.3	A	UNASSIGNED
5	TACTICAL	TAC 5	DIV H/J	168.2000		127.3	168.2000		127.3	A	DIV HOTEL/JULIET
6	TACTICAL	TAC 6	STRUCTURE	168.6000		127.3	168.6000		127.3	A	STRUCTURE
7	COMMAND RPT	CMD 1	ALL DIVISIONS	170.4250		127.3	168.0750		127.3	A	WILLOW MOUNTAIN
8	UNASSIGNED		UNASSIGNED							A	UNASSIGNED
9	UNASSIGNED		UNASSIGNED							A	UNASSIGNED
10	RED	RED	COORD RESP	154.0700			154.0700			A	MUTUAL AID/STRUCTURE
11	BNF RPT	WILLOW	BACKUP	169.6250			163.4625		127.3	A	HAMILTON AREA
12	BNF RPT	TEEPEE POINT	BACKUP	169.6250			163.4625		136.5	A	SULA AREA
13	A/G Primary	A/G PRI	ALL DIVISIONS	173.9375			173.9375			A	PRIMARY
14	A/G Secondary	A/G SEC	ALL DIVISIONS	167.5250			167.5250			A	SECONDARY
15	MEDI VAC A/G	TAN	ALL DIVISIONS	155.3400			155.3400		156.7	A	MED A/G VMED 28
16	AIR GUARD	GUARD	ALL DIVISIONS	168.6250			168.6250		110.9	A	AIR GUARD
Prepared by (Communications Unit) BLODGETT LAKE COMMUNICATIONS 310-780-4345 Trent Coppinger						Incident Location BITTERROOT NF, CONTROLLED UNCLASSIFIED INFORMATION//BASIC County RAVALLI State MT Latitude 3-7-77 N Longitude - W					

The convention calls for frequency lists to show four digits after the decimal place, followed by either an "N" or a "W", depending on whether the frequency is narrow or wide band. Mode refers to either "A" or "D" indicating analog or digital (e.g. Project 25) or "M" indicating mixed mode. All channels are shown as if programmed in a control station, mobile or portable radio. Repeater and base stations must be programmed with the Rx and Tx reversed.

FINANCE MESSAGE

OPTIONS FOR SUBMITTING TIME:

1. **Fillable PDF CTR/Shift Ticket:** Please use QR code on IAP and scroll to fillable CTR's & Shift Tickets button to access forms. If you do not have QR capabilities finance can e-mail you the forms directly.
2. **Hard Copy CTR/Shift Ticket:** Fill out a hard copy CTR, snap a picture and email into finance. If you send in a picture, please make sure it is legible and includes the supervisor's signature at the bottom! Please make sure to include your phone number in the **Remarks** in case we have questions.
3. OR if you do not have a smartphone/tablet you can fill out a hard copy.

FINANCE DEMOB PROCESS

- Email all finance documentation (time must be projected for travel home).
- Only 1 representative per resource to close out at finance at ICP.
- Abide by scheduled DMOB time or call finance for an unscheduled DMOB.
- **Government agency resources** that would like to close out their time 100% remotely should email their final CTR with travel, email and phone number listed on the CTR. If you have any questions or concerns about this process, please call 406-830-5214.

2022.blodgettlake.finance@firenet.gov

Comp/Claims - 406-363-8956/ leon_augustine@firenet.gov

Personnel/Equipment – 406-830-5214

TRAINING MESSAGE

Training Specialist Check-in – If you have a position task book (PTB), please scan the QR code below to initiate the check-in process with the Incident Training Specialist. Please complete the form in its entirety. Upon completion, at your earliest convenience, email a copy of your qualification card and position task book cover (see below for email address).

For your convenience, an electronic ICS-225 or ICS-226, Evaluation Record, and other appropriate assignment documentation will be sent to you after you complete the check-in process.



[BLODGETT LAKE FIRE – TRAINEE CHECK-IN](#)

Incident Assignment Requirements –

1. Ensure your trainer(s)/evaluator(s) has/have initialed completed tasks in your PTB,
2. Obtain an Incident Performance Rating,
3. Obtain an Evaluation Record,
4. If evaluator initialed #1 on your Evaluation Record, ensure he/she signs as final evaluator (located on the backside of your PTB cover page),
5. Email all documentation (including item #4), when appropriate,
6. Complete Exit Interview (form will be provided via email).

Email Address –

risttnsp@gmail.com

Training Specialists –

Mary Leathers, Incident Training Specialist
JoAnne Ware, Incident Training Specialist (T)

Demobilization Check-out Instructions

BLODGETT LAKE MILL LAKE

This incident will be using a virtual checkout process and the use of an off-site virtual Demob Unit Leader.

All departing resources should follow the demobilization check-out process below.

1. Ensure that your supervisor has released you from the incident, in coordination with the Demob Unit.
Filling out this QR Code DOES NOT initiate your Demob.
2. Check out with all of the following units as applicable. Each unit will release you through an electronic process rather than a paper ICS-221
 - Weed Wash
 - Supply
 - Communications
 - Ground Support
 - Time (Finance)
3. After your final stop at the Time Unit (Finance), confirm ETAs prior to departing ICP by using the QR code below to ensure accurate departure/arrival times. Our virtual demob unit leader can release you from this assignment and you will have completed the demob process.

Please contact the virtual Demob Unit if you need assistance:

2022.blodgettlake.demob@firenet.gov

Phone: 406-250-3769

Demob Release Form



[Bit.ly/BlodgettRelease](https://bit.ly/BlodgettRelease)

****Any resource requiring commercial air travel must make arrangements with the Demobilization Unit 72 hours in advance** This QR code contains a Flight Request form*****



09/20/2022

TENTATIVE RELEASE

BLODGETT LAKE US-MT-BRF-022252

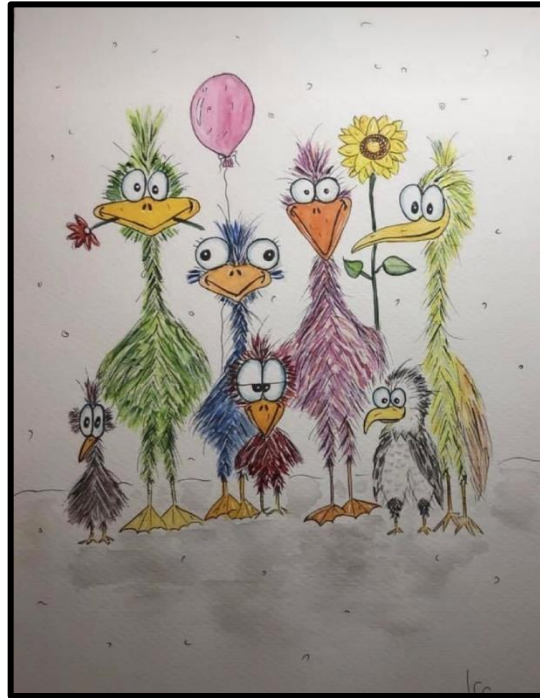
CREWS

C-2	0800	(CR2I)	YUKON
C-3	0830	(CRW2)	TORRES CONTRACTING, INC.
C-4	0900	(CRW2)	P.R. REFORESTATION



HUMAN RESOURCE MESSAGE

There is zero tolerance for harassment, alcohol, or federally prohibited substances on this fire incident.



The nice thing about teamwork is that you always have others on your side.

Margaret Carty

Sometimes team members need to know you appreciate them. Take the opportunity to let them know.

Debby Hassel, HRSP (979) 255-5513

hrspfire@gmail.com

KITCHEN HOURS

Breakfast 0600 - 0900

Dinner 1800 - 2100

Lunches, Water, and Gatorade can be picked up from the Refer located at the North End Gate by the Wooden Log Archway.

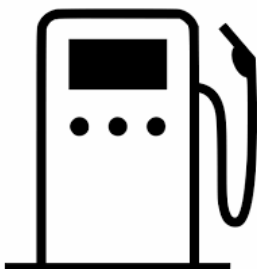
SHOWER HOURS



0530 - 1100 and 1400 - 2200

SUPPLY HOURS

0600 – 2200



FUEL HOURS

0700 – 2000

MEDICAL PLAN (206 WF)

Incident/Project Name:	1. Operational Period:
Blodgett Lake	0600-2200 09/20/2022

2. Ambulance			
Name	Complete Address	Phone and EMS Frequency	Advance Life Support Yes/No
Bitterroot Health-Daly Hospital	1200 Westwood Dr. Hamilton, MT	911 406-363-2211	YES
Marcus Daly EMS	1200 Westwood Drive Hamilton, MT	911 406-375-4682	YES
Missoula EMS	2680 Palmer St. Missoula, MT	911	YES

3. Air Ambulance		
Name	Phone	Type of Aircraft & Capability
Life Flight Butte & Missoula, MT	911 208-367-3114	Commercial Air Ambulance, Augusta 109 Nurse, Paramedic, NVG contact on TAN/VMED28
Air Idaho Salmon, ID	911 208-367-3114	Commercial Air Ambulance, Nurse, Paramedic NVG contact on TAN/VMED28
Two Bear Air Kalispell, MT	Command/Coordinated through AOBD/ASGS	Hoist and Rescue Ship with medical personnel DEPENDS ON AVAILABILITY, EXPECT EXTENDED ETA 2+ HOURS
Yellowstone Helitack Helena, MT	Command/Coordinated through AOBD/ASGS	1HQ A-Star AS-350 B#, Short Haul Capable, EMT EXPECT EXTENDED ETA

4. Hospitals						
Name Complete Address	LAT: DD ° MM.MMM' N LONG: DD ° MM.MMM' W	Travel Times		Phone	Helipad Yes/No	Level of Care
		AIR	GRND			
Bitterroot Health-Memorial Hosp. 1200 Westwood Drive Hamilton, MT	LAT: 46° 14.8771 N LONG: 114° 10.3346 W	0	10 min.	406-363-2211	YES	CRITICAL ACCESS HOSP
St Patrick Hospital 500 W Broadway St. Missoula, MT	LAT: 46° 52.5273 N LONG: 113° 59.9865 W FREQUENCY: WHITE 155.280 TONE TX 156.7	30 min.	1 hr.	406-329-2620	YES 40' x 40' ROOFTOP	LEVEL 2
Harborview Medical Center Main Hospital Seattle, WA	LAT: 46° 00.5407 N LONG: 112° 32.6620 W	4 hrs.	8 hrs.	406-744-3000	YES	BURNS
Salt Lake Regional Medical Center 1050 E S Temple St. Salt Lake City, UT	LAT: 46° 46.0506 N LONG: 111° 51.7169 W	3.75 hrs.	7.5 hrs.	801-350-4111	YES	LEVEL 1 TRAUMA

MEDICAL PLAN (206 WF)

5. BRANCH DIVISION GROUP	AREA LOCATION CAPABILITY	
DIV ALPHA	Responders & Capability:	
	Medical Emergency Channel:	
DIV CHARLIE	Responders & Capability:	Paramedic 1 , Ayala Rahm EMPF (ALS) Ambulance 2 , Bob Ward EMTF 406-580-5529 (BLS) EMT 2 , Josh Joyner EMTF 208-965-3508 (BLS)
	Medical Emergency Channel:	CMD 7 TAC 2
DIV ECHO/GOLF	Responders & Capability:	EMT 1 , Lisa Axel EMTF 612-532-5181 (BLS) Ambulance 1 , Josh Pusker EMPF 440-796-6903 (ALS) EMT 3 , Hayden Griffith 913-904-2356 (BLS)
	Medical Emergency Channel:	CMD 7 TAC 3
DIV HOTEL/JULIET	Responders & Capability:	Paramedic 2 , Ryan Gregor EMPF 602-363-0770 (ALS)
	Medical Emergency Channel:	CMD 7 TAC 5
STRUCTURE GROUP	Responders & Capability:	
	Medical Emergency Channel:	CMD 7 TAC 6

6. Prepared by: (MEDL)	Date	Reviewed by: (SOF)	Date
Dennis Dorrance	09/19/2022	<i>Persephone Whelan</i>	9/19/2022



10 Standard Firefighting Orders

Medical Incident Report – 8 Line

FOR A NON-EMERGENCY INCIDENT, WORK THROUGH CHAIN OF COMMAND TO REPORT AND TRANSPORT INJURED PERSONNEL AS NECESSARY.

FOR A MEDICAL EMERGENCY: IDENTIFY ON SCENE INCIDENT COMMANDER BY NAME AND POSITION AND ANNOUNCE "MEDICAL EMERGENCY" TO INITIATE RESPONSE FROM IMT COMMUNICATIONS/DISPATCH.

Use the following items to communicate situation to communications/dispatch.

1. CONTACT COMMUNICATIONS / DISPATCH (Verify correct frequency prior to starting report)

Ex: "Communications, Div. Alpha. Stand-by for Emergency Traffic."

2. INCIDENT STATUS: Provide incident summary (including number of patients) and command structure.

Ex: "Communications, I have a Red priority patient, unconscious, struck by a falling tree. Requesting air ambulance to Forest Road 1 at (Lat./Long.) This will be the Trout Meadow Medical, IC is TFLD Jones. EMT Smith is providing medical care."

Severity of Emergency / Transport Priority	<input type="checkbox"/> RED / PRIORITY 1 Life or limb threatening injury or illness. Evacuation need is IMMEDIATE <i>Ex: Unconscious, difficulty breathing, bleeding severely, 2° – 3° burns more than 4 palm sizes, heat stroke, disoriented.</i> <input type="checkbox"/> YELLOW / PRIORITY 2 Serious Injury or illness. Evacuation may be DELAYED if necessary. <i>Ex: Significant trauma, unable to walk, 2° – 3° burns not more than 1-3 palm sizes.</i> <input type="checkbox"/> GREEN / PRIORITY 3 Minor Injury or illness. Non-Emergency transport <i>Ex: Sprains, strains, minor heat-related illness.</i>	
Nature of Injury or Illness & Mechanism of Injury		Brief Summary of Injury or Illness <i>(Ex: Unconscious, Struck by Falling Tree)</i>
Transport Request		Air Ambulance / Short Haul/Hoist Ground Ambulance / Other
Patient Location		Descriptive Location & Lat. / Long. (WGS84)
Incident Name		Geographic Name + "Medical" <i>(Ex: Trout Meadow Medical)</i>
On-Scene Incident Commander		Name of on-scene IC of Incident within an Incident <i>(Ex: TFLD Jones)</i>
Patient Care		Name of Care Provider <i>(Ex: EMT Smith)</i>

3. INITIAL PATIENT ASSESSMENT: Complete this section for each patient as applicable (start with the most severe patient)

Patient Assessment:

See IRPG page 106

Treatment:

4. TRANSPORT PLAN:

Evacuation Location (if different): (Descriptive Location (drop point, intersection, etc.) or Lat. / Long.) Patient's ETA to Evacuation Location:

Helispot / Extraction Site Size and Hazards:

5. ADDITIONAL RESOURCES / EQUIPMENT NEEDS:

Example: Paramedic/EMT, Crews, Immobilization Devices, AED, Oxygen, Trauma Bag, IV/Fluid(s), Splints, Rope rescue, Wheeled litter, HAZMAT, Extrication

6. COMMUNICATIONS: Identify State Air/Ground EMS Frequencies and Hospital Contacts as applicable

Function	Channel Name/Number	Receive (RX)	Tone/NAC *	Transmit (TX)	Tone/NAC *
COMMAND					
AIR-TO-GRND					
TACTICAL					

7. CONTINGENCY: Considerations: If primary options fail, what actions can be implemented in conjunction with primary evacuation method? Be thinking ahead.

8. ADDITIONAL INFORMATION: Updates/Changes, etc.

REMEMBER: Confirm ETA's of resources ordered. Act according to your level of training. Be Alert. Keep Calm. Think Clearly. Act Decisively.

