



RECEIVED

MAY 03 2022

Ravalli County Commissioners

--	--	--	--	--

April 29, 2022

Dear Property Owner,

As a property owner within the proposed Ravalli County Targeted Economic Development District (TEDD) 2022 Expansion, you are receiving this notice as required by state law. We encourage you to participate in the public hearing outlined below. A map of the proposed district is displayed on the following page.

\*\*\*\*\*

**NOTICE OF  
PUBLIC HEARING FOR  
THE FIRST READING OF AN ORDINANCE TO EXPAND THE  
TARGETED ECONOMIC DEVELOPMENT DISTRICT (TEDD) IN RAVALLI COUNTY**

**NOTICE OF PUBLIC HEARING**

The Board of Ravalli County Commissioners will hold a public hearing on Monday, May 16, 2022 at 3:00 PM, in the Commissioners Conference room (3<sup>rd</sup> Floor) at the Ravalli County Administrative Center located at 215 S. 4<sup>th</sup> Street, Hamilton, Montana. The purpose of this Public hearing is to consider and take public comment on the first Reading and Provisional Adoption of the Ordinance establishing the Ravalli County Targeted Economic Development District (TEDD) – 2022 Expansion and adoption of the 2022 Ravalli County Targeted Economic Development District Plan. The Ravalli County TEDD – 2022 Expansion encompasses approximately 128 acres, a portion of which is locally known as the “Old Corvallis Road Area III” and a portion that is the Ravalli County Airport. Ravalli County intends to use tax increment financing in support of making infrastructure improvements as revenues permit and may issue tax increment financing bonds. The required second reading public meeting is scheduled for Tuesday, May 31, 2022 at 3:00 PM, with the adoption of said Ordinance to immediately follow the second reading.

If you have any questions, or would like to make a public comment due to your inability to attend this meeting, please contact the Commissioners through either of the following: 215 S. 4<sup>th</sup> Street, Suite A, Hamilton, Montana 59840 or by phone (406) 375-6500 or by email [commissioners@rc.mt.gov](mailto:commissioners@rc.mt.gov).

Brooke Crutcher  
Commissioners Administrative Assistant

\*\*\*\*\*

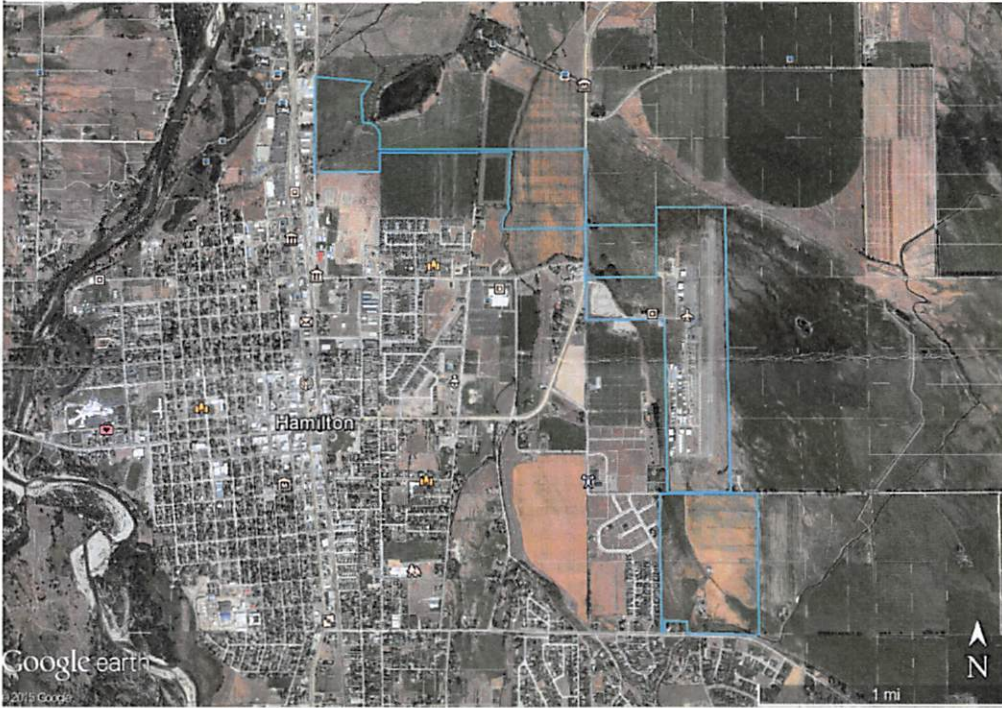
RECEIVED

MAY 03 2025

Ravalli County Commissioners

--	--	--	--	--

**Original 2015 Boundary for the Ravalli County Targeted Economic Development District is shown in blue in Figure 3, below.**



*Figure 3. 2015 TEDD*

**The boundary for the Ravalli County Targeted Economic Development District 2022 Expansion is shown in blue in Figure 4.**



*Figure 4. 2022 Expansion Area*