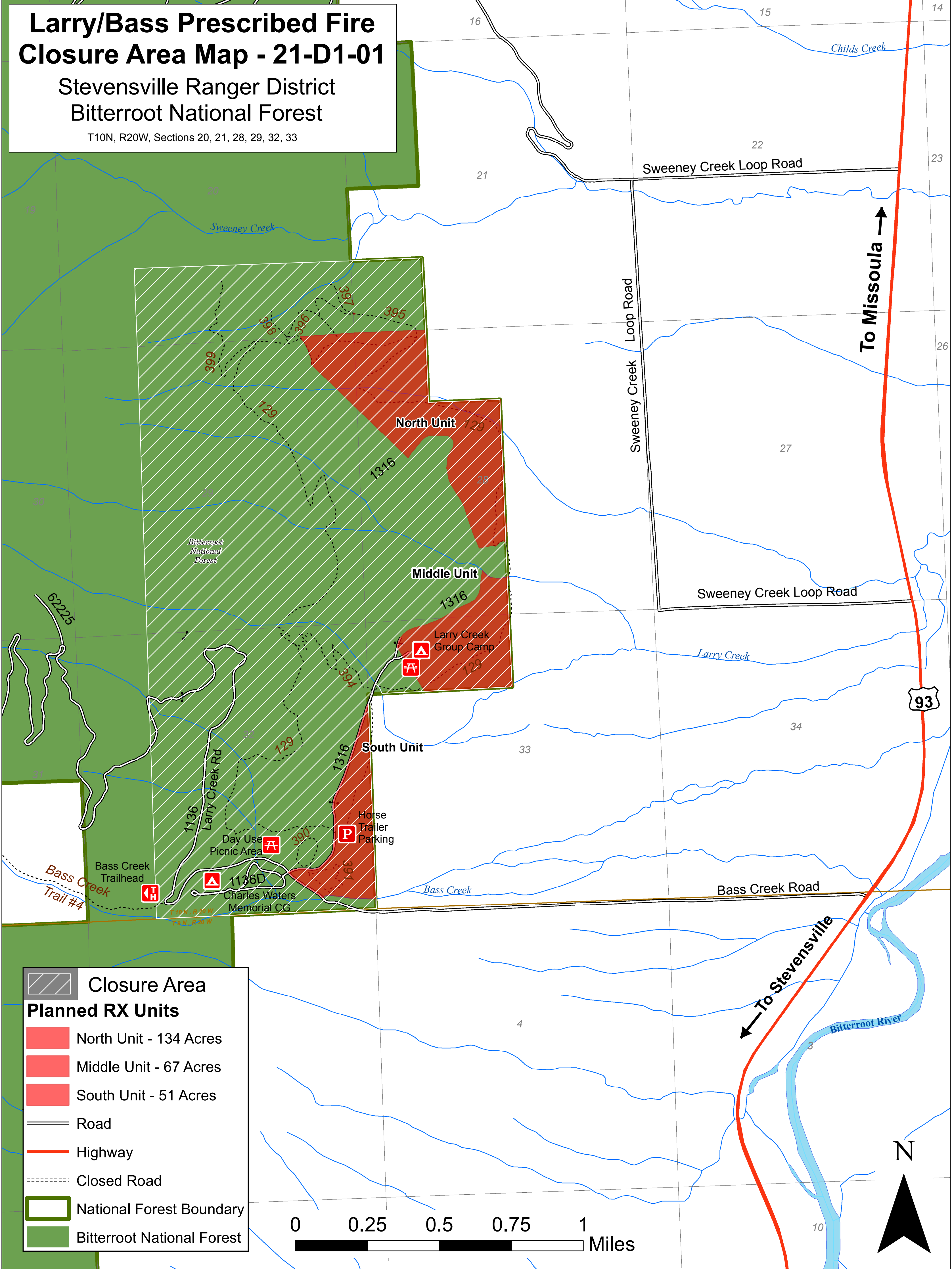


Larry/Bass Prescribed Fire Closure Area Map - 21-D1-01

Stevensville Ranger District
Bitterroot National Forest

T10N, R20W, Sections 20, 21, 28, 29, 32, 33



Closure Area

Planned RX Units

- North Unit - 134 Acres
- Middle Unit - 67 Acres
- South Unit - 51 Acres

— Road

— Highway

----- Closed Road

□ National Forest Boundary

■ Bitterroot National Forest

