



Ravalli County Planning Department
215 South 4th Street, Suite F
Hamilton, MT 59840
406.375.6530 planning@rc.mt.gov

RECEIVED

APR 02 2021

Ravalli County Commissioners

| | | | | |
|--|--|--|--|--|
| | | | | |
|--|--|--|--|--|

OG-21-03-144

Triple D Ranch I and Triple D Ranch II Open Lands Bond Program Meeting

As an adjoining landowner, you are being notified of a Public Meeting for Open Lands Bond Program Board Members and for the Ravalli County Board of Commissioners Public Hearing for these projects.

The Conservation Sub-Committee for the Open Lands Board will conduct a public meeting for the Ravalli County Open Lands Bond projects on **Tuesday, April 20th, 2021 at 3:30 P.M.** in the Commissioners' Meeting Room (Third Floor) of the County Administrative Building located at **215 South 4th Street, Hamilton, MT 59840**. The Open Lands Board will then conduct a public meeting for the same Ravalli County Open Lands Bond projects on **Thursday, April 29th, 2021 at 7:00 P.M.** in the Commissioners' Meeting Room (Third Floor) of the County Administrative Building located at **215 South 4th Street, Hamilton, MT 59840**. Furthermore, The Board of County Commissioners will conduct a site visit on Thursday, May 6th, 2021, from 2:00-5:00 P.M. and a public hearing on the *Triple D Ranch I and Triple D Ranch II* Applications for Ravalli County's Open Lands Bond Program on **Thursday, May 13th, 2021 from 1:30-3:30 P.M.** in the Commissioners Meeting Room (Third Floor) of the County Administrative Building located at **215 South 4th Street, Hamilton, MT 59840**.

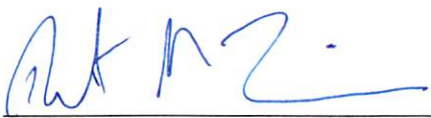
The conservation projects will be comprised of two separate conservation easements, called Triple D Ranch I (424.61 acres) and Triple D Ranch II (1256.79 acres). The projects are located approximately 5.0 miles east of the Town of Stevensville and are adjacent to South Burnt Fork Road, South Sunset Bench Road, Rosemont Loop and McIntyre Road (attached is a map for your reference). The above described meetings will have physical and virtual meeting options using Zoom application. To attend the meeting virtually using Zoom, go to <https://ravalli.us/181/Open-Lands-Board> and look for *Zoom Meeting – Click Here*. It is recommended to pre-install Zoom on users' desktop or smart phones as an app for free through your play store option.

Bitter Root Land Trust is the applicant. Information describing the proposals are available for inspection at the Planning Department, in the County Administrative Center, 215 S. 4th Street, Suite F, Hamilton, MT 59840. Written comments are encouraged to be submitted to the Planning Department prior to the public meeting and will be forwarded to the Board of County Commissioners for consideration at the public hearing. Submit email comments to: planning@rc.mt.gov, and questions can be asked by phone at 406-375-6530

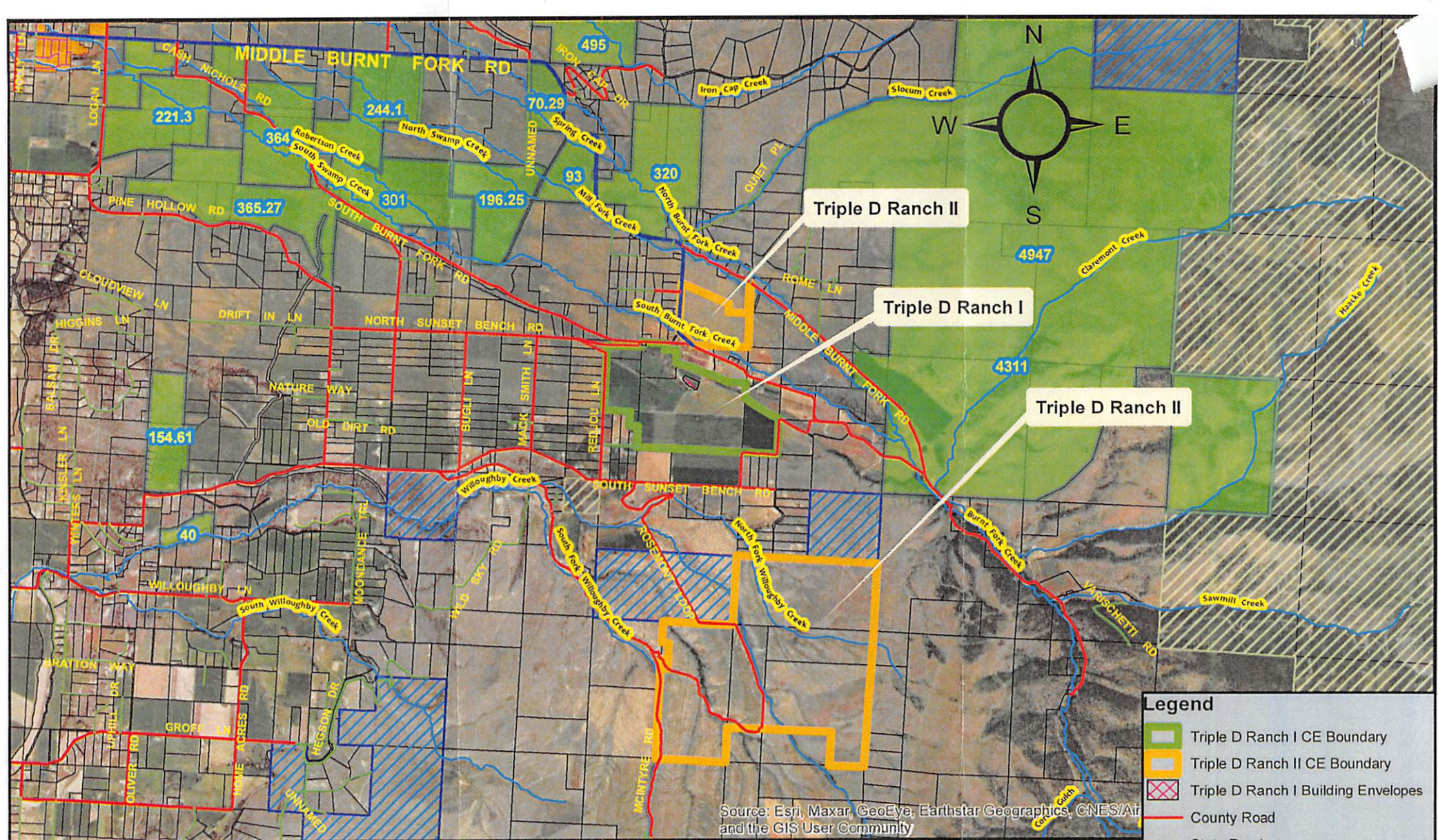
Sincerely,



Jacob Cummings
Ravalli County Planner



Rob Livesay
Ravalli County Floodplain Manager/Planning Technician



Source: Esri, Maxar, GeoEye, Earthstar Geographics, CNES/Airbus, and the GIS User Community

0 1.5 3 Miles

Ravalli County Planning Department
 215 S. 4th Street, Suite F
 Hamilton, MT 59840
 Phone 406-375-6530
 planning@rc.mt.gov



Date: 3/30/2021

Triple D Ranch I (OLBP#2021-01)
 Tax ID: 279210, 293300, 293310, 401800, & 415010
 Total Conservation Easement: 1,256.79 acres
 and

Triple D Ranch II (OLBP#2021-02)
 Tax ID: 345000, 345310, 401700, & 401810
 Total Conservation Easement: 424 acres

Triple D Ranch I & II Combined: 1,680 acres

Legend

- Triple D Ranch I CE Boundary
- Triple D Ranch II CE Boundary
- Triple D Ranch I Building Envelopes
- County Road
- State Road
- Private Road
- City Road
- Conservation Easements by Acreage
- Streams
- State Land
- Federal Land
- Town of Stevensville
- Ownership