

Beaver Fire

ID-NCF-000552
P1NJD820 (0117)
710044

Marion Fire

ID-NCF-000508
P1EKT520 (0117)



Incident Action Plan

Sunday

September 20, 2020

Operational Period 0700 - 1900

INCIDENT OBJECTIVES1. Incident Name
Beaver Fire, Marion Fire2. Date Prepared
09/19/20203. Time Prepared
2100

4. Objectives

High Value Assets and Resources to be Protected:

Public and first responder health from COVID-19; community of Powell and associated private inholdings/property; smoke sensitive communities, including Missoula and the Bitterroot valley; public and private timber lands.

Leader's Intent:

- Protect human life. Firefighter and public safety will be given the highest priority at all times.
- Minimize the exposure of the public and responders to transmission or infection from COVID-19 by following CDC, county and NPCNF measures relating to social distancing, masks and cleaning procedures.
- Establish and maintain information sharing networks with communities potentially impacted by smoke.
- Minimize fire impacts to Whitebark pine seed collection trees.
- Manage any portion of the fire located within a wilderness area using strategies and tactics that are commensurate with wilderness values.
- Take appropriate measures to reduce chances of noxious weed spread onto the forest, including weed wash of vehicles before entering the incident area and when demobilizing.
- Commit incident resources only where there is a high probability of meeting reasonable objectives or when the risk of injury or death can be mitigated.
- Maintain and foster relationships with users of public lands, landowners, agencies and local communities.
- Adhere to applicable work-rest guidelines to reduce fatigue and ensure that assigned fire-fighting personnel receive adequate rest.
- Maintain a workplace and atmosphere of mutual respect and free of any harassment. There will be no tolerance for any unethical, illegal drug or alcohol related incidents.
- Effectively manage costs commensurate with the high value assets and resources to be protected and risks..
- Efficiently demobilize resources in a manner that will ensure safe travel and "right-sizing" consistent with demobilization glidepath direction.
- Right size the organization and prepare for transition and transfer of command

Operational Objectives:

The incident will be managed utilizing contain/confine and point protection strategies.

5. Prepared By (Planning Section Chief)
Will Bernard:6. Approved By (Incident Commander)
Bob Fry:

ORGANIZATION ASSIGNMENT LIST		9. Operations Section		
1. Incident Name Beaver Fire, Marion Fire		Chief-Line	Joe Brabender*, Rich Cowger (t)*	
		Chief-Planning	Ron Naber*, Danny Lemer (t)*	
		a. Divisions/Groups		
2. Date 09/20/20	3. Time 0700 - 1900		Beaver Fire	
4. Operational Period: Day Shift		Division/Group	Alpha / Bravo	Manny Mendoza*
		Division/Group	Zulu	Monitored
5. Incident Commander and staff		Division/Group		
Incident Commander	Bob Fry, Paul Roose (t)* Rick Moreno ICT3 – Shadow Sam Bullington ICT3 (t) - Shadow	Division/Group		
Safety Officers	Marvin Carpenter, Steve Wyatt*	b. Divisions/Groups		
Information Officer	Nick Holloway (t)		Marion Fire	
Liaison Officer	Lance Burns			
6. Agency Representatives		Division/Group	Mike	Kris George*, Jacob Jeresek (t)*
Agency	Name	Division/Group		
FS Agency Admin	Brandon Knapton, Ron Tipton (t)	Division/Group		
FS Deputy Fire Staff Officer	Barry Ruklic	Division/Group		
FS AFMO	Mike Wood	Division/Group		
		Division/Group		
		c. Divisions/Groups		
7. Planning Section				
Chief	Will Bernard	Division/Group		
Resources Unit	Jody Pettit*	Division/Group		
Check In	Nolan Baldwin (t)*	Division/Group		
Demobilization Unit	Joe Read	Division/Group		
Documentation		Division/Group		
Situation Unit	Chad Ramsay*	Division/Group		
GIS Specialist	Andrew Mock	d. Air Operations Branch		
Fire Behavior	Eric Trimble*	Air Operations Branch Director		
FS Resource Advisor	Rebecca Lloyd *	Air Attack Supervisor		
IT Support	Ed Yeager, Bryce Nordgren	Air Support Supervisor		
		Helicopter Coordinator		
		Air Tanker Coordinator		
8. Logistics Section		10. Finance Section		
Chief	Tyler Rae	Chief	Dale Harrison, Jamie Porter	
Facilities Unit		Time Unit Leader		
Supply Unit	Bryan Connelley	Cost Unit	Liz Behrends (t)	
Ordering		Personnel	Amy Erickson (t)	
Communications Unit	Tom Robbins*	Equipment	Lisa Hawdon	
Medical Unit	Teri Miller*			
Base Camp	AJ Angelo*	*Located at Powell Base Camp (v) = virtual		
Ground Support Unit		Prepared by (Resource Unit Leader) Jody Pettit		
Security Unit	Ron Babus*			

Beaver Fire Weather Forecast

Spot Forecast from the National Weather Service Missoula, MT
Forecast is based on start time of 0700 PDT on Sept 20, 2020
456 PM MDT 9/19/2020

DISCUSSION . . .

Expect showers to diminish by Sunday morning, then becoming partly cloudy by late afternoon. RH should remain high all day and into the next day. Gradual warming and drying through Tuesday. With a south-westerly flow aloft off-site smoke is expected to return to the area by Tuesday afternoon. Winds will generally be terrain-driven up to 10 mph.

SUNDAY . . .

* Sky/Weather.....Mostly Cloudy. Chance of rain showers.
* CWR (> 0.10 Inch)...10%.
* LAL.....1.
* Max Temperature.....55-60°F.
* Min Humidity.....45-50%.
* Wind (20 ft).....West 5-10 mph w/gusts to 15 mph on ridgetops by afternoon.
* Haines Index.....2 Very Low.
* Precip Amount.....0.03 inches

SUNDAY NIGHT . . .

* Sky/Weather.....Mostly Clear.
* CWR (> 0.10 Inch)...0%.
* LAL.....1.
* Min Temperature.....40-45°F.
* Max Humidity.....65-70%.
* Wind (20 ft).....South 5 mph becoming variable 2-5 mph after midnight.
* Precip Amount.....0 inches.

MONDAY . . .

* Sky/Weather.....Partly Cloudy.
* CWR (> 0.10 Inch)...0%.
* LAL.....1.
* Max Temperature.....67-72°F.
* Min Humidity.....25-30%.
* Wind (20 ft).....South 5 mph becoming SW 10-15 mph w/gusts to 20 mph by afternoon.
* Haines Index.....4 Low.
* Precip Amount.....0.0 inches.

MONDAY NIGHT . . .

* Sky/Weather.....Partly Cloudy.
* CWR (> 0.10 Inch)...0%.
* LAL.....1.
* Min Temperature.....44-49°F.
* Max Humidity.....65-70%.
* Wind (20 ft).....Variable 1-3 mph.
* Precip Amount.....0.0 inches.

TUESDAY.....Mostly Cloudy. Lows 45-50. Highs 63-68. Min RH: 30-40%. West winds to 15 mph.

WEDNESDAY....Mostly Cloudy. Lows 40-50. Highs 65-75. South winds to 10 mph.

THURSDAY.....Mostly Cloudy. Chance of rain showers. Lows 45-55. Highs 60-70. SW winds to 10 mph

FRIDAY.....Mostly Cloudy. Chance of rain showers. Lows 40-50. Highs 55-65.

FIRE BEHAVIOR FORECAST

FORECAST NUMBER: 19

INCIDENT TYPE: Wildfire

FIRE NAME: Beaver/Marion

OPERATIONAL PERIOD: Sept 20, 2020 Sunday

DATE ISSUED: Sept 19, 2020

TIME ISSUED: 1800

UNIT: ID-Clear-Nez

PREPARED BY: Eric Trimble – FBAN

INPUTS

WEATHER SUMMARY:

Sky Weather: Mostly Cloudy, Chance of rain showers

CWR (>0.10"): 10%

Max Temps: 55-60°

Min RH: 45-50% **Haines:** 2 (Very Low). **LAL:** 1

Winds (20 ft): West 5-10 mph w/gusts to 15 mph on ridgetops by afternoon.

FUELS:

Beaver: Mixed conifer forest dominated by DF, LPP, WL, SAF, and ES; with WRC on north aspects/valley bottoms. Mature SAF/ES conifer fuels with high crown bulk density and low crown base height. Mature DF/GF/WL/LPP conifer fuels with high crown bulk density and high crown base height. Herbaceous and live woody fuels are largely cured and will contribute to surface fire spread.

Marion: Mature, relatively open SAF and ES with dispersed pockets of regen and dead/down fuels. Mature SAF/ES conifer fuels with low to moderate crown bulk density and yet low crown base height.

Fine Fuels: 10-12%; 10-hr: 26%; 100hr: 16%; 1000hr: 12%

ERC: 60th percentile.

OUTPUTS - FIRE BEHAVIOR

GENERAL:

Creeping and Smoldering with limited surface fire activity and isolated torching. Little to no spotting potential.

Backing/flanking spread 1-2 ft/min with flames <2 ft. Head fire with possible 5 ft. flame lengths within the jackpots of down/woody material and up to 4-6 ft/min rates of spread with wind/slope alignment.

Probability of Ignition (PIG): 10-20% during the peak of the burning period.

SPECIFIC:

Beaver Fire – Expect Creeping and Smoldering. Limited surface fire activity with isolated torching. Little to no growth in the fire perimeter.

Marion Fire – Expect Creeping and Smoldering. Limited surface fire activity with isolated torching. Little to no growth in the fire perimeter.

AIR OPERATIONS: Expect marginal visibility due to low clouds and smoke.

SAFETY: Maintain good situational awareness as conditions become conducive for cool, wet conditions.


AIR OPERATIONS SUMMARY (ICS 220)

1. Incident Name: Beaver ID-NCF-000552 Marion ID-NCF-000508	2. Operational Period: Date From: Sept. 20, 2020 Date To: Sept. 20, 2020 Time From: 0730 Time To: 2000	3. Sunrise: Sunset: 0632 1841				
4. Remarks (safety notes, hazards, air operations special equipment, etc.): * Aviation requirement will be reviewed and applied where needed Consider the safety and risk analysis while planning and ordering A/C * A/C availability will be shared as needed, unless assigned to the specific Incident * A/C Available & assigned to the Powell - order through comm		5. Ready Alert Aircraft: Medivac: 1HQ Short Haul Helicopter New Incident: Two Bear Air-(Hoist @				
7. Personnel:		8. Frequencies:				
Name:	Phone Number:	AM	FM			
Air Operations Branch Director	Contact Ron Nabor					
Air Support Group Supervisor	N/A					
Air Tactical Group Supervisor	Sharing with Forest					
Helicopter Coordinator						
Helibase Manager	Connie Stickel					
	503 348-4581					
10. Helicopters (use additional sheets as necessary):		9. Fixed-Wing (category/kind/type, make/model, N#, base): Air Tactical Group Supervisor Aircraft: A/C avail. at Grangeville Airport / Helibase Air Attack - primary AA-117 (N44NC) AA-200KQ @ GIC Other Fixed-Wing Aircraft: Seats - T-822 @ GIC & T-835 @ GIC Refer to the Aviation Map for Helispot info - Lat / Long, specific Water dipping sites on the map w/lat & Long				
FAA N#	Category/Kind/Type	Make/Model	Base	Available	Start	Remarks
Assigned to	BEAVER INC.					
H-16920	T2	Bell 212	Powell	Available Local	0800	
H-974H	T3	Bell 407	For Planning	Available Local	0800	Order through dispatch
HB-116	T1	Kaman Aero K-1200	Located at	Available local	0800	Order through dispatch
HG-562AJ	T1	CH-47D	Grangeville - Airport	Available Local	0800	Standard
11. Prepared by: Name: Sal Garcia Position/Title: AOB Signature: _____						
ICS 220, Page 1 Date/Time: 9/19/2020 - 1800						

AIR OPERATIONS SUMMARY (ICS 220)

1. Incident Name: Beaver ID-NCF-000552 Marion ID-NCF-000508	2. Operational Period: Date From: Sept. 20, 2020 Date To: Sept. 20, 2020 Time From: 0730 Time To: 2000	3. Sunrise: 0632	Sunset: 1841
12. Task/Mission/Assignment (category/kind/type and function includes: air tactical, reconnaissance, personnel transport, search and rescue, etc.):			
Category/Kind/Type and Function	Name of Personnel or Cargo (if applicable) or Instructions for Tactical Aircraft	Mission Start	Fly From Fly To
	A/C request will be assigned as needed with Ops and Divisions approval. Helicopter N16920, Bell 212 is assigned to the Beaver Inc.	0800	
	Refer to the Aviation Map, for specific location, marking and lat / long for respective sites and spots.		
	Additional A/C's are available at Missoula, Montana Airbase if needed		
	Additional A/C's are assigned at Grangeville airport -		
	Contact Powell Communication and they will forward to Operations		
	The incoming Incident Team will make the necessary changes based on their Plans and needs		
	N16920 Will be used to support Beaver with cargo loads, bucket dropping and necessary recons, as needed		
	Communication's will cancel specific Freq, not being used by the Transition Team taking over the Fire 9.20.2020		
	Dispatch can amend and or cancel the TFR 0/6099		

11. Prepared by: Name: Sal Garcia Position/Title: AOBD Signature: _____
 Date/Time: 9/19/2020 - 1800

INCIDENT RADIO COMMUNICATIONS PLAN		Incident Name BEAVER FIRE				Date/Time Prepared 9/17/2020 1500		Operational Period Date/Time 9/19/2020 0700 – 9/20/2020 1900	
Ch #	Function	Channel Name	Assignment	RX Freq N or W	RX Tone	TX Freq N or W	Tx Tone	Mode	Remarks
1									
2									
3									
4									
5									
6									
7									
8									
9									
12	Air to Ground	A/G17		167.9875 N		167.9875 N		A	Air to Ground
13	Air to Ground	A/G45		167.6500 N		167.6500 N		A	Air to Ground
7	Repeater	Beaver Ridge		171.5750 N		166.2625 N	100.0	A	NFS Repeater
8	Repeater	Rocky Ridge		171.5750 N		166.2625 N	162.2	A	NFS Repeater
14	Tactical	Beaver Tac		169.1250N		169.1250N	162.2	A	FireTac1
15	Tactical	Marion Tac		166.5625N		166.5625 N		A	FireTac2
16	Air Guard	Air Guard	All	168.6250 N		168.6250 N	110.9	A	Emergency
Prepared By (Communications Unit) Thomas Robbins COML 				Incident Location		Powell ID			

The convention calls for frequency lists to show four digits after the decimal place, followed by either an "N" or a "W", depending on whether the frequency is narrow or wide band. Mode refers to either "A" or "M" indicating analog or digital (e.g. Project 25) or "M" indicating mixed mode. All channels are shown as if programmed in a control station, mobile or portable radio. Repeater and base stations must be programmed with the Rx and Tx reversed.

HEALTH AND SAFETY MESSAGE

SAFETY starts with *YOU*

We are ALL accountable for SAFE behaviors

INCIDENT:
Beaver and Marion Fires

DATE: September 20, 2020
TIME: Day 0700 - 1900

Major Hazards and Risks:

- Fire on the hill – There is still a mission to finish. Stay engaged, focused and finish this incident strong.

Quote of the Day

“Your first duty and highest obligation is safety, for your crew and others”
by unknown

HAZARDOUS ATTITUDES & COMPLACENCY

Invulnerable – That can't happen to us

Anti-authority – Disregard of the team effort

Impulsive – Do something even if it's wrong

Macho – Trying to impress or prove something

Complacent – Just routine rehab work

Resigned – We can't make a difference

Group Think – Afraid to speak up or disagree

Attitude is 10% what happens to us,

and 90% is how we react to it.

Complacency is the enemy of Safety.

TRANSITION DAY!!

CHANGE of COMMAND

- Risks to fireline personnel increase significantly during change of command.
- There is a high potential for fatalities, serious injuries or incidents during the transfer.
- Mitigate risks thru proper mitigation methods.
- Know who you work for at all times. Be extra alert during the change of command.

QUESTIONS THAT COULD SAVE YOUR LIFE

- Who is in charge?
- Are all hazards identified, and have you made them known?
- Communications?
- Weather? Hot and Dry/Wet.
- Confusion?
- Is there a safer way to do it?
- Can you justify your actions?

**We still have a job to do,
Use extreme caution doing it, don't
let Complacency set in.**

Your Safety Team

Remember Each of **YOU** are safety Officers!!

MEDICAL PLAN (ICS 206 WF)

1. Incident/ project name and address:						2. Operational Period: Date/Time									
Beaver Powell Idaho						9-20-20 0700-1900									
3. Ambulance Services															
<i>Name</i>			<i>Complete address</i>						<i>Phone & EMS Frequency</i>		<i>ALS</i> ✓				
Missoula Ambulance Service INC			2600 Palmer St Missoula, MT 59808						406-549-2325		X				
Powell QRU			Powell Ranger Station						911						
AMR Ambulance			Division A						Command						
4. Air Ambulance Services															
<i>Name</i>			<i>Location/remarks</i>				<i>Phone & EMS Frequency</i>		<i>ALS</i> ✓	<i>hoist</i> ✓	<i>night</i> ✓				
Life Flight Network			Missoula, MT/Sand Point, ID/Butte				911 406-829-7070		X		X				
Alert Air Ambulance			Kalispell, MT				911 406-752-5111		X		X				
Two Bear Air			Whitefish, MT				911 406-297-2121			X	X				
5. Hospitals															
<i>Name and Address</i>				<i>Phone</i>		<i>Level of care</i>	<i>Heli Pad</i> ✓	<i>If Heli pad, Lat./Long. (DD mm.mmm') Datum WGS84</i>			<i>Travel time to hosp: min's</i> <i>Air Ground</i>				
Eastern Idaho Regional Medical Center 3100 Channing Way Idaho Falls, ID 83404				208-529-6111		Trauma II Burn center	X	N 43 28' 17" W 111 59' 29.5"							
St. Patrick Hospital 500 Broadway Missoula, MT				406-543-7271		Trauma II	X	N 46 52.524 W113 59.969			68				
Community Medical Center 2827 Ft. Missoula Rd Missoula, MT				406-728-4100		Trauma III	X	N 46 50.909 W 114 02.865			64				
6. Area Location Capability															
<i>Branch, Div, Group</i>		<i>Aid Station Name; Responders</i>			<i>Equipment available</i>	<i>Emergency frequency</i>	<i>Ambulance ETA to site: min's</i> <i>Air Ground</i>		<i>Nearby Heli spot &/or DP</i>	<i>Helispot &/or DP lat/long (DD mm.mmm') Datum WGS 84</i>					
Powell Ranger Station		MEDL/EMPF Teri Miller EMPF Alyse Gutierrez			ALS										
7. Notes, special procedures: Use Medical Incident Report for medical response and Medical Incident Pre-Planning worksheet for briefing. Medical Emergencies should be reported in accordance with Lolo/Kootenai Forest procedures.															
8. Prepared by (Medical Unit Leader)				9. Date/Time				10. Reviewed by (Safety Officer)				11. Date/Time			
Teri Miller				9/19/20 1700				Steve Wyatt				9/19/20 1700			

ICS-206 COVID-19 PLAN	1. Incident Name Beaver Fire	2. Date Prepared 9-20-20	3. Time Prepared	4. Operational Period
---------------------------------	---------------------------------	-----------------------------	------------------	-----------------------

INCIDENT MEDICAL AID STATIONS

MEDICAL AID STATION	LOCATION	ISOLATION?	
		YES	NO
Daily screening-road check	Powell Ranger Station	X	
Daily self checks	ICP		X

LOCAL SUPPORT

A. OFF-SITE ISOLATION FACILITIES

NAME	LOCATION	PHONE	MEDICAL	
			YES	NO
Hotels in Missoula, MT	Contact SWZ COVID logistics	406-540-2965		X

COVID SCREENING PROCEDURES

ICP	medical	
	ALS	BLS

TESTING FACILITIES

NAME	ADDRESS	Apointment required		Phone	Days operation		Hours operation	
		Yes	No		Work day	Week end	WD	WE
Community Medical Center Rapid tes outpatient lab	2827 Fort Missoula rd Missoula MT	X		406-327-4378	M-F	Sat	0630 1730	0830 1330
Missoula City-county Health depart	4025 flynn lane Missoula MT	X		406-258-4770	M-F	NA	0900 1600	NA
Clearwater Valley Hospital Orfino, ID	301 Cedar ST Orfino, Id		X	hospital 208-476-4555 Lab 208-476-8035	M-F	Sat	0900 1700	0900 1700

COVID-19 PROCEDURES

Field Screenings-self check screening. Postive Symptoms? Isolate patient, notify MEDL follow instuctions given.

First aid station Screening. Postive symptoms? Isolate patient Notify MEDL, follow instructions

Notes: Isolation can take place in a vehicle short term. Vehicle to be completely disinfected afterward before use. Expectations that Module of 1 concepts will be followed. Nearest/reccomended testing is at Community Medical Center rapid 2 hour results.

Prepared by medical unit leader
Teri Miller 406-544-3070

Reviewed by saftey officer
Steve Wyatt

ASSIGNMENT-SPECIFIC MEDICAL EMERGENCY ACTION PLAN

Pre-Planning for today's assignment

What are the likely hazards that could cause injuries? What kind of severe injuries?		
Who is the likely in-charge DIVS or overhead for an emergency in your assigned area today? (i.e. "Division Zulu")		
Who are the Medical personnel assigned to your part of the incident? What are their capabilities?		
Other Emergency Responders: fire dept., crash rescue, ambulance?		
Communications: Command channel, Air to Ground, Medical helicopters, local rescue/medical?		
Transportation methods available	Ground vehicle, drop point, coordinates, travel route?	
	Aircraft I.D, Helispot names, coordinates? Hoist capable, internal transport	
	Other available methods - contingency	
Most likely workforce for evacuation		

Response checklist

Who takes charge?

- DIVS or designated Overhead manages the overall scene and evacuation process.
- Medical personnel and emergency responders manage patients and assist in rescue/extrication.
- OPS and IC make command decisions so the emergency can be given full attention and management. They continue to manage ongoing incident operations.

Response sequence:

- First, secure the scene and protect responders and patients from further injury. Render first aid.
- Clear the Command channel for "Emergency Traffic only" if this is a critical emergency. If not, inform Communications of non-critical-emergency status and use normal communications.
- Contact closest Medical personnel and DIVS or designated Overhead for response.

Information for Communications: Medical Incident Report – See last page of IAP and IRPG pages 116 and 119.

Helicopter Extraction Operations: See IRPG pages 116 and 117.

Severe Weather: In the event of forecasted severe weather, implement Incident Severe Weather Plan.

Incident Within Incident: Upon arriving at the incident, all overhead should obtain and review the team's Incident Within Incident Plan.

Information Message

“A picture is worth a thousand words”

1. **Public Information is seeking photos and videos** for Inciweb, social media, and other information products. Photos and videos draw attention and help tell the story of the fire. The photos and videos that we have obtained from personnel in the field have gotten a lot of traction on social media.

We are looking for anything of interest that could be related to the Beaver (or Marion) Fire. Photos that show the hard work being done on the fire will really help the public understand what the team is doing and the need for this effort. Crews working, equipment, and air operations, mixed in with photos of the fire itself really work well.

How to get your photos to Information:

- a. Transfer photos and videos to whomever attends the 0700 Operational Period Briefing so they can provide them directly to the PIO at the meeting.
- b. Email them to 2020.beaver@firenet.gov or give to someone with internet access to send.

Please include any relevant information that may help put the photo in context.

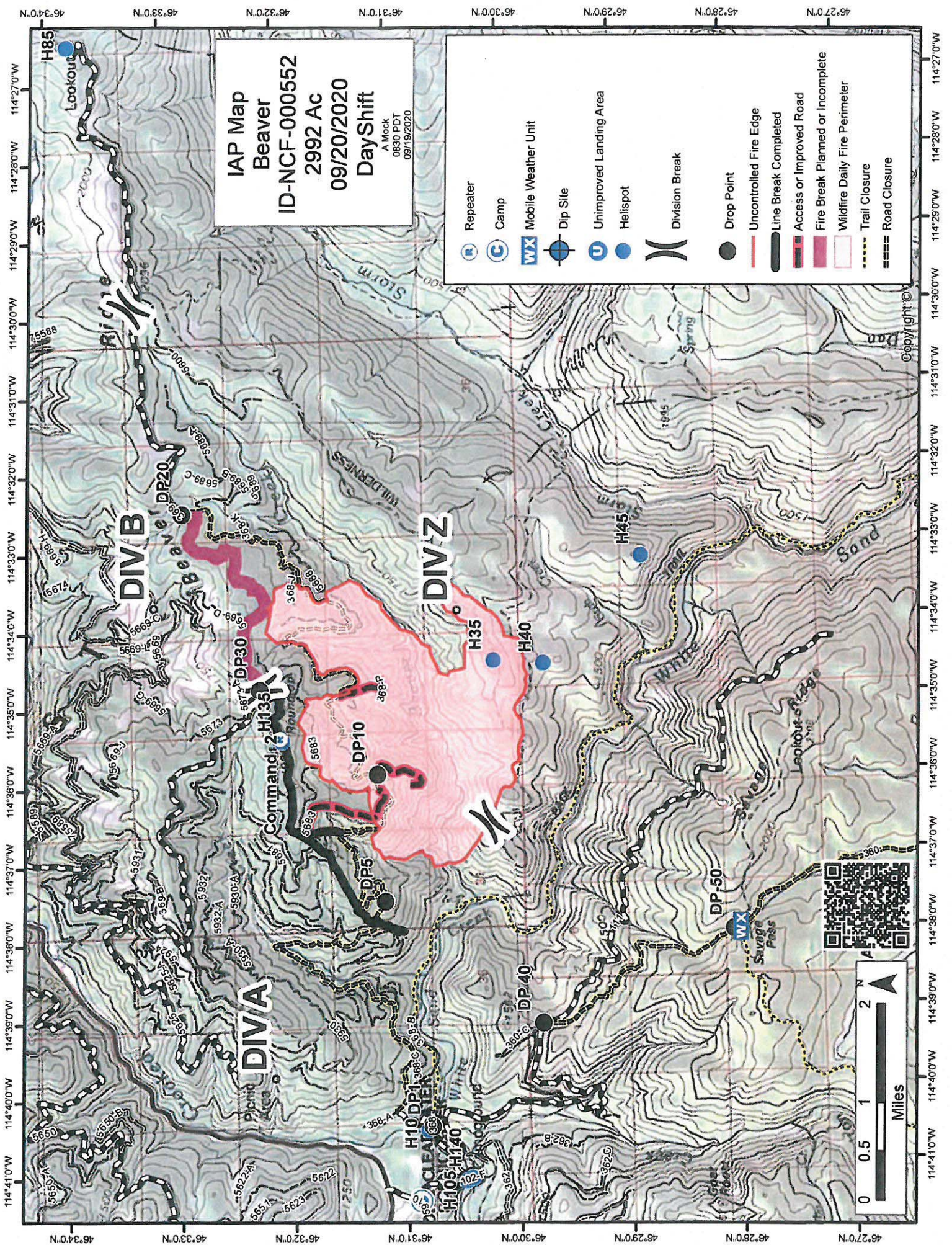
2. A **Lost and Found** box is located inside the Supply Unit yurt.
3. People wishing to send **mail** should drop it off within the Supply Unit yurt.

BEAVER FIRE - MARION FIRE

Telephone List

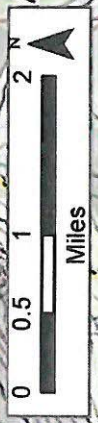
Last Edited: 09/19 @ 1600

IC	BOB FRY	406-431-0102
IC (T)	PAUL ROOSE	406-640-1337
LIAISON	LANCE BURNS	218-464-8465
INFORMATION POI2(T)	NICK HOLLOWAY	406-370-9381
OPERATIONS PLANNING	RON NABER	406-640-1614
OPERATIONS - LINE	JOE BRABENDER	406-691-0369
OPERATIONS - LINE (T)	RICH COWGER	406-780-1317
SAFETY	MARVIN CARPENTER	406-594-5728
SAFETY	STEVE WYATT	406-437-8386
PLANNING	WILL BERNARD	919-619-1408
RESOURCES	JODY PETTIT	208-290-8840
DEMOBILIZATION	JOE READ	406-253-1130
CHECK IN (T)	NOLAN BALDWIN	406-396-0074
SITUATIONS	CHAD RAMSAY	208-290-2253
COMPUTER HELP	ED YEAGER	818-360-2519
PLANS OFFICE - POWELL		208-942-3123
		208-942-3133
READ	REBBECA LLOYD	406-830-0998
FINANCE	DALE HARRISON	715-499-1457
FINANCE	JAMIE PORTER	406-830-5220
COMP/CLAIMS (T)	AMY ERICKSON	406-207-3516
LOGISTICS	TYLER RAE	406-425-1038
BASE CAMP MGR	AJ ANGELO	406-544-3715
SUPPLY	BRYAN CONNELLEY	406-570-0506
COMMUNICATIONS	TOM ROBBINS	406-698-7500
MEDICAL	TERI MILLER	406-544-3070
SECURITY	RON BABUS	570-269-7741

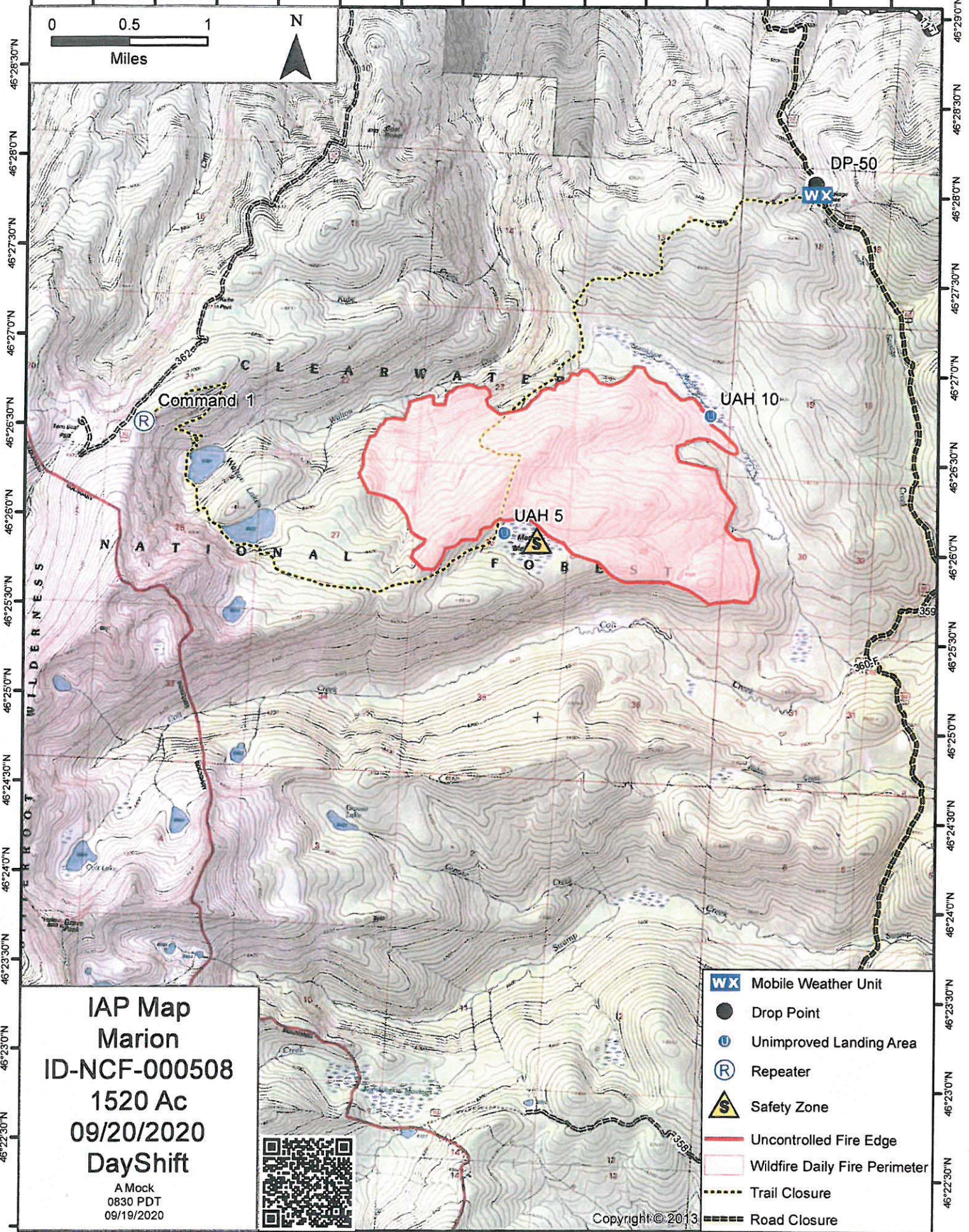


IAP Map
 Beaver
 ID-NCF-000552
 2992 AC
 09/20/2020
 DayShift
 A Mock
 0630 PDT
 09/19/2020

- Repeater (R)
- Camp (C)
- Mobile Weather Unit (WX)
- Dip Site (Dip Site symbol)
- Unimproved Landing Area (U)
- Helispot (Helispot symbol)
- Division Break (X)
- Drop Point (●)
- Uncontrolled Fire Edge (Red line)
- Line Break Completed (Thick black line)
- Access or Improved Road (Dashed line)
- Fire Break Planned or Incomplete (Pink shaded area)
- Wildfire Daily Fire Perimeter (Pink shaded area)
- Trail Closure (Dotted line)
- Road Closure (Thick dashed line)



114°44'30"W 114°44'0"W 114°43'30"W 114°43'0"W 114°42'30"W 114°42'0"W 114°41'30"W 114°41'0"W 114°40'30"W 114°40'0"W 114°39'30"W 114°39'0"W 114°38'30"W 114°38'0"W 114°37'30"W



- WX** Mobile Weather Unit
- Drop Point
- U** Unimproved Landing Area
- R** Repeater
- S** Safety Zone
- Uncontrolled Fire Edge
- Wildfire Daily Fire Perimeter
- - - Trail Closure
- - - Road Closure

IAP Map
Marion
ID-NCF-000508
1520 Ac
09/20/2020
DayShift
 A Mock
 0830 PDT
 09/19/2020



Copyright © 2013

114°44'0"W 114°43'30"W 114°43'0"W 114°42'30"W 114°42'0"W 114°41'30"W 114°41'0"W 114°40'30"W 114°40'0"W 114°39'30"W 114°39'0"W 114°38'30"W 114°38'0"W 114°37'30"W 114°37'0"W

MEDICAL PLAN (ICS 206 WF)

Controlled Unclassified Information//Basic

Medical Incident Report

FOR A NON-EMERGENCY INCIDENT, WORK THROUGH CHAIN OF COMMAND TO REPORT AND TRANSPORT INJURED PERSONNEL AS NECESSARY.

FOR A MEDICAL EMERGENCY: IDENTIFY ON SCENE INCIDENT COMMANDER BY NAME AND POSITION AND ANNOUNCE "MEDICAL EMERGENCY" TO INITIATE RESPONSE FROM IMT COMMUNICATIONS/DISPATCH.

Use the following items to communicate situation to communications/dispatch.

1. CONTACT COMMUNICATIONS / DISPATCH (Verify correct frequency prior to starting report)

Ex: "Communications, Div. Alpha. Stand-by for Emergency Traffic."

2. INCIDENT STATUS: Provide incident summary (including number of patients) and command structure.

Ex: "Communications, I have a Red priority patient, unconscious, struck by a falling tree. Requesting air ambulance to Forest Road 1 at (Lat./Long.) This will be the Trout Meadow Medical, IC is TFLD Jones. EMT Smith is providing medical care."

Severity of Emergency / Transport Priority	<input type="checkbox"/> RED / PRIORITY 1 Life or limb threatening injury or illness. Evacuation need is IMMEDIATE <i>Ex: Unconscious, difficulty breathing, bleeding severely, 2^o - 3^o burns more than 4 palm sizes, heat stroke, disoriented.</i> <input type="checkbox"/> YELLOW / PRIORITY 2 Serious injury or illness. Evacuation may be DELAYED if necessary. <i>Ex: Significant trauma, unable to walk, 2^o - 3^o burns not more than 1-3 palm sizes.</i> <input type="checkbox"/> GREEN / PRIORITY 3 Minor injury or illness. Non-Emergency transport <i>Ex: Sprains, strains, minor heat-related illness.</i>	
Nature of Injury or Illness & Mechanism of Injury		Brief Summary of Injury or Illness <i>(Ex: Unconscious, Struck by Falling Tree)</i>
Transport Request		Air Ambulance / Short Haul/Hoist Ground Ambulance / Other
Patient Location		Descriptive Location & Lat. / Long. (WGS84)
Incident Name		Geographic Name + "Medical" <i>(Ex: Trout Meadow Medical)</i>
On-Scene Incident Commander		Name of on-scene IC of Incident within an Incident <i>(Ex: TFLD Jones)</i>
Patient Care		Name of Care Provider <i>(Ex: EMT Smith)</i>

3. INITIAL PATIENT ASSESSMENT: Complete this section for each patient as applicable (start with the most severe patient)

Patient Assessment: See IRPG page 106

Treatment:

4. TRANSPORT PLAN:

Evacuation Location (if different): (Descriptive Location (drop point, intersection, etc.) or Lat. / Long.) Patient's ETA to Evacuation Location:

Helispot / Extraction Site Size and Hazards:

5. ADDITIONAL RESOURCES / EQUIPMENT NEEDS:

Example: Paramedic/EMT, Crews, Immobilization Devices, AED, Oxygen, Trauma Bag, IV/Fluid(s), Splints, Rope rescue, Wheeled litter, HAZMAT, Extrication

6. COMMUNICATIONS: Identify State Air/Ground EMS Frequencies and Hospital Contacts as applicable

Function	Channel Name/Number	Receive (RX)	Tone/NAC *	Transmit (TX)	Tone/NAC *
COMMAND					
AIR-TO-GRND					
TACTICAL					

7. CONTINGENCY: Considerations: If primary options fail, what actions can be implemented in conjunction with primary evacuation method? Be thinking ahead.

8. ADDITIONAL INFORMATION: Updates/Changes, etc.

REMEMBER: Confirm ETA's of resources ordered. Act according to your level of training. Be Alert. Keep Calm. Think Clearly. Act Decisively.