

# Beaver Fire

ID-NCF-000552  
P1NJD820 (0117)  
710044

# Marion Fire

ID-NCF-000508  
P1EKT520 (0117)



# Incident Action Plan

Saturday  
September 19, 2020  
Operational Period 0700 - 1900

# INCIDENT OBJECTIVES

1. Incident Name  
Beaver Fire, Marion Fire

2. Date Prepared  
09/18/2020

3. Time Prepared  
2100

## 4. Objectives

### High Value Assets and Resources to be Protected:

Public and first responder health from COVID-19; community of Powell and associated private inholdings/property; smoke sensitive communities, including Missoula and the Bitterroot valley; public and private timber lands.

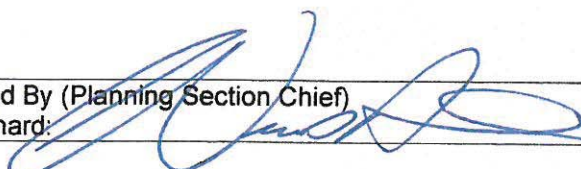
### Leader's Intent:

- Protect human life. Firefighter and public safety will be given the highest priority at all times.
- Minimize the exposure of the public and responders to transmission or infection from COVID-19 by following CDC, county and NPCNF measures relating to social distancing, masks and cleaning procedures.
- Establish and maintain information sharing networks with communities potentially impacted by smoke.
- Minimize fire impacts to Whitebark pine seed collection trees.
- Manage any portion of the fire located within a wilderness area using strategies and tactics that are commensurate with wilderness values.
- Take appropriate measures to reduce chances of noxious weed spread onto the forest, including weed wash of vehicles before entering the incident area and when demobilizing.
- Commit incident resources only where there is a high probability of meeting reasonable objectives or when the risk of injury or death can be mitigated.
- Maintain and foster relationships with users of public lands, landowners, agencies and local communities.
- Adhere to applicable work-rest guidelines to reduce fatigue and ensure that assigned fire-fighting personnel receive adequate rest.
- Maintain a workplace and atmosphere of mutual respect and free of any harassment. There will be no tolerance for any unethical, illegal drug or alcohol related incidents.
- Effectively manage costs commensurate with the high value assets and resources to be protected and risks..
- Efficiently demobilize resources in a manner that will ensure safe travel and "right-sizing" consistent with demobilization glidepath direction.
- Right size the organization and prepare for transition and transfer of command

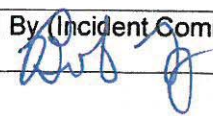
### Operational Objectives:

The incident will be managed utilizing contain/confine and point protection strategies.

5. Prepared By (Planning Section Chief)  
Will Bernard:



6. Approved By (Incident Commander)  
Bob Fry:



ORGANIZATION ASSIGNMENT LIST		9. Operations Section	
1. Incident Name  Beaver Fire, Marion Fire		Chief-Line	Joe Brabender*, Rich Cowger (t)*
		Chief-Planning	Ron Naber*, Danny Lemer (t)*
2. Date 09/19/20      3. Time 0700 - 1900		<b>a. Divisions/Groups</b>	
		Beaver Fire	
4. Operational Period: Day Shift		Division/Group	Alpha / Bravo      Manny Mendoza*
		Division/Group	Zulu      Monitored
<b>5. Incident Commander and staff</b>		Division/Group	
Incident Commander	Bob Fry, Paul Roose (t)*	Division/Group	
Safety Officers	Marvin Carpenter, Steve Wyatt*	<b>b. Divisions/Groups</b>	
Information Officer	Nick Holloway (t), Max Rebholz PIOF (t)	Marion Fire	
Liaison Officer	Lance Burns		
<b>6. Agency Representatives</b>		Division/Group	Mike      Kris George*, Jacob Jeresek (t)*
Agency	Name	Division/Group	
FS Agency Admin	Brandon Knapton, Ron Tipton (t)	Division/Group	
FS Deputy Fire Staff Officer	Barry Ruklic	Division/Group	
FS AFMO	Mike Wood	Division/Group	
		Division/Group	
		<b>c. Divisions/Groups</b>	
<b>7. Planning Section</b>			
Chief	Will Bernard	Division/Group	
Resources Unit	Jody Pettit*	Division/Group	
Check In	Nolan Baldwin (t)*	Division/Group	
Demobilization Unit	Joe Read	Division/Group	
Documentation		Division/Group	
Situation Unit	Chad Ramsay*	Division/Group	
GIS Specialist	Andrew Mock	<b>d. Air Operations Branch</b>	
Fire Behavior	Eric Trimble*	Air Operations Branch Director	
FS Resource Advisor	Rebecca Lloyd *	Air Attack Supervisor	
IT Support	Ed Yeager	Air Support Supervisor	
		Helicopter Coordinator	
		Air Tanker Coordinator	
<b>8. Logistics Section</b>		<b>10. Finance Section</b>	
Chief	Tyler Rae	Chief	Dale Harrison, Jamie Porter
Facilities Unit		Time Unit Leader	
Supply Unit	Bryan Connelley	Cost Unit	Liz Behrends (t)
Ordering	Cindy Wharton	Personnel	Amy Erickson (t)
Communications Unit	Tom Robbins*	Equipment	Lisa Hawdon
Medical Unit	Teri Miller*		
Base Camp	AJ Angelo*	*Located at Powell Base Camp      (v) = virtual	
Ground Support Unit		Prepared by (Resource Unit Leader) Jody Pettit	
Security Unit	Ron Babus*		

## Beaver Fire Weather Forecast

Spot Forecast from the National Weather Service Missoula, MT  
Forecast is based on start time of 0700 PDT on Sept 19, 2020  
545 PM MDT 9/18/2020

### DISCUSSION . . .

Rain will persist throughout the day on Saturday. Winds will be out of the west with gusts up to 20 mph. Clouds and intermittent showers will linger through Saturday night and into Sunday, although wetting rains should cease by Saturday evening. Skies will clear by Sunday night. Monday will see a return to southwest flow aloft, bringing smoke into the region.

### SATURDAY . . .

- \* Sky/Weather.....Cloudy. Rain by morning, then rain showers and a slight chance of T-storms by afternoon.
- \* CWR (> 0.10 Inch)...80%.
- \* LAL.....2.
- \* Max Temperature.....53-58°F.
- \* Min Humidity.....70-75%.
- \* Wind (20 ft).....West 3-5 mph increasing to 5-10 mph w/gusts to 20 mph on ridgetops by afternoon.
- \* Haines Index.....2 Very Low.
- \* Precip Amount.....0.18 inches

### SATURDAY NIGHT . . .

- \* Sky/Weather.....Mostly Cloudy. Patchy fog after sunset. Chance of rain.
- \* CWR (> 0.10 Inch)...20%.
- \* LAL.....1.
- \* Min Temperature.....40-45°F.
- \* Max Humidity.....85-95%.
- \* Wind (20 ft).....West 3-5 mph becoming variable 2-5 mph after midnight.
- \* Precip Amount.....0.03 inches.

### SUNDAY . . .

- \* Sky/Weather.....Mostly Cloudy, Chance of rain showers.
- \* CWR (> 0.10 Inch)...10%.
- \* LAL.....1.
- \* Max Temperature.....57-62°F.
- \* Min Humidity.....51-56%.
- \* Wind (20 ft).....SW 5-10 mph w/gusts to 15 mph.
- \* Haines Index.....2 Very Low.
- \* Precip Amount.....0.0 inches.

### SUNDAY NIGHT . . .

- \* Sky/Weather.....Mostly Clear.
- \* CWR (> 0.10 Inch)...0%.
- \* LAL.....1.
- \* Min Temperature.....39-44°F.
- \* Max Humidity.....72-77%.
- \* Wind (20 ft).....West 5 mph.
- \* Precip Amount.....0.0 inches.

MONDAY.....Partly Cloudy. Lows 45-50. Highs 57-62. Min RH: 25-30%. SW winds to 5 mph.

TUESDAY.....Partly Cloudy. Lows 40-50. Highs 60-70. West winds to 10 mph.

WEDNESDAY...Partly Cloudy. Lows 40-50. Highs 65-75. South winds to 10 mph

THURSDAY... Partly Cloudy. Slight chance of rain. Lows 45-55. Highs 70-80.

## FIRE BEHAVIOR FORECAST

**FORECAST NUMBER:** 18

**INCIDENT TYPE:** Wildfire

**FIRE NAME:** Beaver/Marion

**OPERATIONAL PERIOD:** Sept 19, 2020 Saturday

**DATE ISSUED:** Sept 18, 2020

**TIME ISSUED:** 1800

**UNIT:** ID-Clear-Nez

**PREPARED BY:** Eric Trimble – FBAN

### INPUTS

**WEATHER SUMMARY:**

**Sky Weather:** Cloudy, Rain and Rain Showers

**CWR (>0.10"): 80%**

**Max Temps:** 53-58°

**Min RH:** 70-75% **Haines:** 2 (Very Low). **LAL:** 2

**Winds (20 ft):** West 3-5 mph increasing to 5-10 w/gusts to 15 mph by afternoon.

**FUELS:**

**Beaver:** Mixed conifer forest dominated by DF, LPP, WL, SAF, and ES; with WRC on north aspects/valley bottoms. Mature SAF/ES conifer fuels with high crown bulk density and low crown base height. Mature DF/GF/WL/LPP conifer fuels with high crown bulk density and high crown base height. Herbaceous and live woody fuels are largely cured and will contribute to surface fire spread.

**Marion:** Mature, relatively open SAF and ES with dispersed pockets of regen and dead/down fuels. Mature SAF/ES conifer fuels with low to moderate crown bulk density and yet low crown base height.

**Fine Fuels:** 10-12%; 10-hr: 20%; 100hr: 8%; 1000hr: 11%

**ERC:** <80<sup>th</sup> percentile.

### OUTPUTS - FIRE BEHAVIOR

**GENERAL:**

Creeping and Smoldering

Backing/flanking spread 1-2 ft/min with flames <2 ft. Head fire with possible 5 ft. flame lengths within the jackpots of down/woody material and up to 4-6 ft/min rates of spread with wind/slope alignment.

**Probability of Ignition (PIG):** 10-20% during the peak of the burning period.

**SPECIFIC:**

**Beaver Fire** – Expect Creeping and Smoldering with little to no growth in the fire perimeter.

**Marion Fire** – Expect Creeping and Smoldering with little to no growth in the fire perimeter.

**AIR OPERATIONS:** Expect poor visibility due to low clouds and rain

**SAFETY:** Maintain good situational awareness as conditions become conducive for cool, wet conditions.

ASSIGNMENT LIST		1. Branch	2. Division/Group			
		Alpha / Bravo				
3. Incident Name <b>Beaver Fire</b>		4. Operational Period Date: 09/19/20		0700 - 1900		
5. Operations Personnel						
Operations Chief		Joe Brabender, Rich Cowger (t)		Division/Group Supervisor Manny Mendoza		
Branch Director		Air Support Group Supervisor				
6. Resources Assigned This Period						
Strike Team/Task Force/ Resource Designator	Last Shift	Leader	No. Pers.	Trans. Needed	Drop Off PT./Time	Pick Up PT./Time
E-45 ENG6 Firebrand	9/25	Lauren Bendel	2	N		
E-71 ENG6 Torch Fire	9/28	Donavun Davis	3	N		
E-48 WTS2 Lance	9/27	John Hale	1	N		
O-2.04 SOF2	9/21	Steve Wyatt	1	N		
E-39 AMBU AMR NW	9/30	Hardesty, Bryan	2	N		
7. Control Operations						
<b>Task:</b> Scout and establish containment lines to the West of the fire. <b>Purpose:</b> Prevent fire from impacting private property to the West and North of the fire. <b>End State:</b> Fire did not reach private property to the West and North of the fire.						
8. Special Instructions						
LCES shall be in place prior to engaging fire. All COVID-19 mitigation protocols shall be followed.						
9. Division/Group Communication Summary						
Function	Frequency - RX	Frequency - TX	Tone	Channel	See Comm Plan.	
Prepared by (RESL) Jody Pettit		Approved by (PSC2) Will Bernard		Date 09/18/20	Time 2000	





# AIR OPERATIONS SUMMARY (ICS 220)

<b>1. Incident Name:</b> Beaver ID-NCF-000552 Marion ID-NCF-000508	<b>2. Operational Period:</b> Date From: Sept. 19, 2020 Date To: Sept. 19, 2020 Time From: 0730 Time To: 2000	<b>3. Sunrise:</b> 0630 <b>Sunset:</b> 1843				
<b>4. Remarks (safety notes, hazards, air operations special equipment, etc.):</b> * Aviation requirement will be reviewed and applied where needed Consider the safety and risk analysis while planning and ordering A/C * A/C availability will be shared as needed, unless assigned to the specific incident * A/C Available & assigned to the Powell - order through comm		<b>5. Ready Alert Aircraft:</b> Medivac: 1HQ Short Haul Helicopter New Incident: Two Bear Air-(Hoist @				
<b>7. Personnel:</b> Name: Phone Number: Air Operations Branch Director Contact Ron Nabor Planning Ops. Air Support Group Supervisor N/A Air Tactical Group Supervisor Sharing with Forest Helicopter Coordinator Helibase Manager Connie Stickel 503 348-4581	<b>8. Frequencies:</b> AM FM Air/Air Fixed-Wing Air/Air Rotary-Wing - Flight Following 127.0750 A-10 Air/Ground 167.1250 A-9 Command Refer to the Comm Plan Deck Coordinator Take-Off & Landing Coordinator Air Guard 168.6250	<b>9. Fixed-Wing (category/kind/type, make/model, N#, base):</b> Air Tactical Group Supervisor Aircraft: A/C avail. at Grangeville Airport / Helibase Air Attack - primary AA-117 (N44NC) AA-200KQ @ GIC Other Fixed-Wing Aircraft: Seats - T-822 @ GIC & T-835 @ GIC Refer to the Aviation Map for Helispot info - Lat / Long, specific Water dipping sites on the map w/lat & Long				
<b>10. Helicopters (use additional sheets as necessary):</b>						
FAA N# Assigned to H-16920 H-974H HB-116 HG-562AJ	Category/Kind/Type BEAVER INC. T2 T3 T1 T1	Make/Model Bell 212 Bell 407 Kaman Aero K-1200 CH-47D	Base Powell For Planning Located at Grangeville - Airport	Available Available Local Available Local Available local Available Local	Start 0800 0800 0800 0800	Remarks Order through dispatch Order through dispatch Standard
<b>11. Prepared by: Name:</b> Sal Garcia		Position/Title: AOB Signature: _____				
Date/Time: 9/18/2020 - 1800						
<b>ICS 220, Page 1</b>						

# AIR OPERATIONS SUMMARY (ICS 220)

<b>1. Incident Name:</b> Beaver ID-NCF-000552 Marion ID-NCF-000508	<b>2. Operational Period:</b> Date From: Sept. 19, 2020 Time From: 0730 Date To: Sept. 19, 2020 Time To: 2000	<b>3. Sunrise:</b> 0630	<b>Sunset:</b> 1843
<b>12. Task/Mission/Assignment (category/kind/type and function includes: air tactical, reconnaissance, personnel transport, search and rescue, etc.):</b>			
<b>Category/Kind/Type and Function</b>	<b>Name of Personnel or Cargo (if applicable) or Instructions for Tactical Aircraft</b>	<b>Mission Start</b>	<b>Fly From</b> <b>Fly To</b>
	A/C request will be assigned as needed with Ops and Divisions approval. Helicopter N16920, Bell 212 is assigned to the Beaver Inc.	0800	
	Refer to the Aviation Map, for specific location, marking and lat / long for respective sites and spots.		
	Additional A/C's are available at Missoula, Montana Airbase if needed		
	Additional A/C's are assigned at Grangeville airport -		
	Contact Powell Communication and they will forward to Operations		
	Operation's / Dispatch & Communications - refer to specific "Beaver Incident Contact List"		
	N16920 Will be used to support Beaver with cargo loads, bucket dropping and necessary recons, as needed		
	Type I helicopter on order for 1100 (9/19/2020) Fire, contact Div A on A/G Comm - contact Div A / M prior to launching of Helicopter -		
	Dispatch can change and or cancel the TFR 0/6099		

**11. Prepared by:** Name: Sal Garcia      Position/Title: AOBD      Signature: \_\_\_\_\_  
 ICS 220, Page 2      Date/Time: 9/18/2020 - 1800

INCIDENT RADIO COMMUNICATIONS PLAN		Incident Name BEAVER FIRE			Date/Time Prepared 9/17/2020 1500		Operational Period Date/Time 9/19/2020 0700 – 9/20/2020 1900		
Ch #	Function	Channel Name	Assignment	RX Freq N or W	RX Tone	TX Freq N or W	Tx Tone	Mode	Remarks
1									
2									
3									
4									
5									
6									
9									
12	Air to Ground	A/G17		167.9875 N		167.9875 N		A	Air to Ground
13	Air to Ground	A/G45		167.6500 N		167.6500 N		A	Air to Ground
7	Repeater	Beaver Ridge		171.5750 N		166.2625 N	100.0	A	NFS Repeater
8	Repeater	Rocky Ridge		171.5750 N		166.2625 N	162.2	A	NFS Repeater
14	Tactical	Beaver Tac		169.1250N		169.1250N	162.2	A	FireTac1
15	Tactical	Marion Tac		166.5625N		166.5625 N		A	FireTac2
16	Air Guard	Air Guard	All	168.6250 N		168.6250 N	110.9	A	Emergency
Prepared By (Communications Unit) Thomas Robbins COME <i>[Signature]</i>				Incident Location Powell ID					

The convention calls for frequency lists to show four digits after the decimal place, followed by either an "N" or a "W", depending on whether the frequency is narrow or wide band. Mode refers to either "A" or "D" indicating analog or digital (e.g. Project 25) or "M" indicating mixed mode. All channels are shown as if programmed in a control station, mobile or portable radio. Repeater and base stations must be programmed with the Rx and Tx reversed.



**HEALTH AND SAFETY MESSAGE**  
**SAFETY starts with YOU**  
We are **ALL** accountable for **SAFE** behaviors



**INCIDENT:**  
**Beaver and Marion Fires**

**DATE:** September 19, 2020  
**TIME:** Day 0700-1900



**Quote for the day:**

*“Omnis Cedo Domus” Everyone Goes Home, prayer or exaltation*

**EVERYONE GOES HOME!!**

We strive for this goal every day. We do this by highlighting the risks that we face daily at our incident, and mitigating them to the best of our ability. We do it through a robust planning process, where great thought goes into our strategies and tactics to minimize firefighter exposure. We try to make your safety the primary mission each day to attain the goal that everyone goes home.

The one hurdle to this is that we deal with humans. And as humans we all are prone to making mistakes.

To get over this hurdle we preach about things like complacency; Your situational awareness; Being focused; Taking care of yourself; Communication; Driving; Fatigue and the list goes on.

We preach on these things because we truly do care about your health and welfare, and want you to come back to camp after each shift; we need you to come back after each shift because we have more to accomplish with this incident and we have a lot of season left.

So, with your help in following mitigations; Taking care of yourself and your fellow firefighters; Being focused and doing everything we ask we can increase the odds that we all will go home.

**Your Safety Team!!**  
Steve Wyatt, Marvin Carpenter,  
and Each of YOU!!

## MEDICAL PLAN (ICS 206 WF)

<b>1. Incident/ project name and address:</b>						<b>2. Operational Period: Date/Time</b>						
Beaver Powell Idaho						9-19-20 0700-1900						
<b>3. Ambulance Services</b>												
<i>Name</i>				<i>Complete address</i>				<i>Phone &amp; EMS Frequency</i>		<i>ALS</i> ✓		
Missoula Ambulance Service INC				2600 Palmer St Missoula, MT 59808				406-549-2325		X		
Powell QRU				Powell Ranger Station				911				
AMR Ambulance				Division A				Command				
<b>4. Air Ambulance Services</b>												
<i>Name</i>			<i>Location/remarks</i>			<i>Phone &amp; EMS Frequency</i>		<i>ALS</i> ✓	<i>hoist</i> ✓	<i>night</i> ✓		
Life Flight Network			Missoula, MT/Sand Point, ID/Butte			911 406-829-7070		X		X		
Alert Air Ambulance			Kalispell, MT			911 406-752-5111		X		X		
Two Bear Air			Whitefish, MT			911 406-297-2121			X	X		
<b>5. Hospitals</b>												
<i>Name and Address</i>				<i>Phone</i>		<i>Level of care</i>	<i>Heli Pad</i> ✓	<i>If Helipad, Lat./Long. (DD mm.mmm') Datum WGS84</i>			<i>Travel time to hosp: min's Air Ground</i>	
Eastern Idaho Regional Medical Center 3100 Channing Way Idaho Falls, ID 83404				208-529-6111		Trauma II Burn center	X	N 43 28' 17" W 111 59' 29.5"			285	
St. Patrick Hospital 500 Broadway Missoula, MT				406-543-7271		Trauma II	X	N 46 52.524 W 113 59.969			68	
Community Medical Center 2827 Ft. Missoula Rd Missoula, MT				406-728-4100		Trauma III	X	N 46 50.909 W 114 02.865			64	
<b>6. Area Location Capability</b>												
<i>Branch, Div, Group</i>		<i>Aid Station Name; Responders</i>		<i>Equipment available</i>	<i>Emergency frequency</i>	<i>Ambulance ETA to site: min's Air Ground</i>		<i>Nearby Helispot &amp;/or DP</i>		<i>Helispot &amp;/or DP lat/long (DD mm.mmm') Datum WGS 84</i>		
Powell Ranger Station		MEDL/EMPF Teri Miller EMPF Alyse Gutierrez		ALS								
Powell FOB/spike		Rosemary Myers		AEMT								
<b>7. Notes, special procedures: Use Medical Incident Report for medical response and Medical Incident Pre-Planning worksheet for briefing. Medical Emergencies should be reported in accordance with Lolo/Kootenai Forest procedures.</b>												
<b>8. Prepared by (Medical Unit Leader)</b>				<b>9. Date/Time</b>		<b>10. Reviewed by (Safety Officer)</b>				<b>11. Date/Time</b>		
Teri Miller				9/18/20 1700		Steve Wyatt				9/18/20 1700		

ICS-206 <b>COVID-19 PLAN</b>	1. Incident Name <b>Beaver Fire</b>	2. Date Prepared <b>9-17-20</b>	3. Time Prepared	4. Operational Period				
<b>INCIDENT MEDICAL AID STATIONS</b>								
<b>MEDICAL AID STATION</b>	<b>LOCATION</b>	<b>ISOLATION?</b>						
		<b>YES</b>	<b>NO</b>					
Covid precheck in screening	Base camp/spike			X				
Daily screening-road check	Powell Ranger Station	X						
Daily self checks	ICP			X				
<b>LOCAL SUPPORT</b>								
<b>A. OFF-SITE ISOLATION FACILITIES</b>								
<b>NAME</b>	<b>LOCATION</b>	<b>PHONE</b>	<b>MEDICAL</b>					
			<b>YES</b>	<b>NO</b>				
Hotels in Missoula, MT	Contact SWZ COVID logistics	406-540-2965		X				
<b>COVID SCREENING PROCEDURES</b>								
<b>ICP</b>		<b>medical</b>						
		<b>ALS</b>	<b>BLS</b>					
<b>BASE CAMP SPIKE</b>	Covid precheck screening prior to checking in to fire Daily covid self check screening for all modules			X				
<b>MEDICAL UNIT-Powell Ranger Stations</b>	Daily covid screening prior to briefing Cold/warm/hot medical units present (on site isolation present)	X						
<b>TESTING FACILITIES</b>								
<b>NAME</b>	<b>ADDRESS</b>	<b>Apointment required</b>		<b>Phone</b>	<b>Days operation</b>		<b>Hours operation</b>	
		<b>Yes</b>	<b>No</b>		<b>Work day</b>	<b>Week end</b>	<b>WD</b>	<b>WE</b>
Community Medical Center Rapid tes outpatient lab	2827 Fort Missoula rd Missoula MT	X		406-327-4378	M-F	Sat	0630 1730	0830 1330
Missoula City-county Health depart	4025 flynn lane Missoula MT	X		406-258-4770	M-F	NA	0900 1600	NA
Clearwater Valley Hospital Orfino, ID	301 Cedar ST Orfino, Id		X	hospital 208-476-4555 Lab 208-476-8035	M-F	Sat	0900 1700	0900 1700
<b>COVID-19 PROCEDURES</b>								
Field Screenings-self check screening. Postive Symptoms? Isolate patient, notify MEDL follow instuctions given.								
First aid station Screening. Postive symptoms? Isolate patient Notify MEDL, follow instructions								
Notes: Isolation can take place in a vehicle short term or at Medical unit. Vehicle to be completely disinfected afterward before use. MEDL can assist contractors with Information. Expectations that Module of 1 concepts will be followed. See list of Covid expectations given to all resources upon checkin and follow. Nearest/reccomended testing is at Community Medical Center rapid 2 hour results.								
Prepared by medical unit leader <b>Teri Miller 406-544-3070</b>					Reviewed by saftey officer <b>Steve Wyatt</b>			

## ASSIGNMENT-SPECIFIC MEDICAL EMERGENCY ACTION PLAN

### Pre-Planning for today's assignment

What are the likely hazards that could cause injuries? What kind of severe injuries?		
Who is the likely in-charge DIVS or overhead for an emergency in your assigned area today? (i.e. "Division Zulu")		
Who are the Medical personnel assigned to your part of the incident? What are their capabilities?		
Other Emergency Responders: fire dept., crash rescue, ambulance?		
Communications: Command channel, Air to Ground, Medical helicopters, local rescue/medical?		
Transportation methods available	Ground vehicle, drop point, coordinates, travel route?	
	Aircraft I.D, Helispot names, coordinates? Hoist capable, internal transport	
	Other available methods - contingency	
Most likely workforce for evacuation		

### Response checklist

#### **Who takes charge?**

- DIVS or designated Overhead manages the overall scene and evacuation process.
- Medical personnel and emergency responders manage patients and assist in rescue/extrication.
- OPS and IC make command decisions so the emergency can be given full attention and management. They continue to manage ongoing incident operations.

#### **Response sequence:**

- First, secure the scene and protect responders and patients from further injury. Render first aid.
- Clear the Command channel for "Emergency Traffic only" if this is a critical emergency. If not, inform Communications of non-critical-emergency status and use normal communications.
- Contact closest Medical personnel and DIVS or designated Overhead for response.

**Information for Communications:** Medical Incident Report – See last page of IAP and IRPG pages 118 and 119.

**Helicopter Extracation Operations:** See IRPG pages 116 and 117.

**Severe Weather:** In the event of forecasted severe weather, implement Incident Severe Weather Plan.

**Incident Within Incident:** Upon arriving at the incident, all overhead should obtain and review the team's Incident Within Incident Plan.

## Information Message

**“A picture is worth a thousand words”**

1. **Public Information is seeking photos and videos** for Inciweb, social media, and other information products. Photos and videos draw attention and help tell the story of the fire. The photos and videos that we have obtained from personnel in the field have gotten a lot of traction on social media.

We are looking for anything of interest that could be related to the Beaver (or Marion) Fire. Photos that show the hard work being done on the fire will really help the public understand what the team is doing and the need for this effort. Crews working, equipment, and air operations, mixed in with photos of the fire itself really work well.

How to get your photos to Information:

- a. Transfer photos and videos to whomever attends the 0700 Operational Period Briefing so they can provide them directly to the PIO at the meeting.
- b. Email them to [2020.beaver@firenet.gov](mailto:2020.beaver@firenet.gov) or give to someone with internet access to send.

Please include any relevant information that may help put the photo in context.

2. A **Lost and Found** box is located inside the Supply Unit yurt.
3. People wishing to send **mail** should drop it off within the Supply Unit yurt.

# BEAVER FIRE - MARION FIRE

## Telephone List

Last Edited: 09/18 @ 1945

IC	BOB FRY	406-431-0102
IC (T)	PAUL ROOSE	406-640-1337
LIAISON	LANCE BURNS	218-464-8465
INFORMATION POI2(T)	NICK HOLLOWAY	406-370-9381
INFORMATION PIOF (T)	MAX REBHOLZ	406-880-8090
OPERATIONS PLANNING	RON NABER	406-640-1614
OPERATIONS - LINE	JOE BRABENDER	406-691-0369
OPERATIONS - LINE (T)	RICH COWGER	406-780-1317
SAFETY	MARVIN CARPENTER	406-594-5728
SAFETY	STEVE WYATT	406-437-8386
PLANNING	WILL BERNARD	919-619-1408
RESOURCES	JODY PETTIT	208-290-8840
DEMOBILIZATION	JOE READ	406-253-1130
CHECK IN (T)	NOLAN BALDWIN	406-396-0074
SITUATIONS	CHAD RAMSAY	208-290-2253
COMPUTER HELP	ED YEAGER	818-360-2519
PLANS OFFICE - POWELL		208-942-3123
		208-942-3133
READ	REBBECA LLOYD	406-830-0998
FINANCE	DALE HARRISON	715-499-1457
FINANCE	JAMIE PORTER	406-830-5220
COMP/CLAIMS (T)	AMY ERICKSON	406-207-3516
LOGISTICS	TYLER RAE	406-425-1038
BASE CAMP MGR	AJ ANGELO	406-544-3715
SUPPLY	BRYAN CONNELLEY	406-570-0506
COMMUNICATIONS	TOM ROBBINS	406-698-7500
MEDICAL	TERI MILLER	406-544-3070
SECURITY	RON BABUS	570-269-7741

TENTATIVE RELEASE  
LAST EDITED 9/18 1900

9/19/20

OVERHEAD

O-31	1000	TFLD DAUGHERTY	DEMOB POWELL
O-32	1000	TFLD MACK	DEMOB POWELL
O-57	1100	MODULE - AVERY	DEMOB POWELL

EQUIPMENT

E-44	0800	ENG6 PEANUT PIE	DEMOB LOLO
E-69	0900	GRADER MADDEN	DEMOB POWELL
E-74	1000	DZS CONTRACTING	DEMOB POWELL

9/20/20

OVERHEAD

O-3	1800	ROSEMARY MYERS	DEMOB LOLO
-----	------	----------------	------------

EQUIPMENT

E-60	1100	HNDW OSTBERG	DEMOB LOLO
E-75	1200	SHWR RAHN	DEMOB POWELL

9/21/20

CREWS

C-1	1400	ANACONDA	DEMOB LOLO
C-2	1400	TRAPPER CREEK	DEMOB LOLO

OVERHEAD

O-38	1500	EQPI ZINK	DEMOB POWELL
------	------	-----------	--------------

EQUIPMENT

E-43	0800	FT ABLE 2 FUEL	DEMOB LOLO
E-82	1000	FT ABLE 2 FUEL	DEMOB LOLO
E-6	1200	POTW CLEARWATER	DEMOB POWELL
E-4	1200	CAT 9M MILE	DEMOB LOLO
E-37	1200	WEED OUTBACK	DEMOB LOLO

YURTS, GENERATORS, LIGHT TOWERS

## Finance Message

Video conferencing will be available daily at 0800 and 2000 at the Powell Ranger Station located in the covered parking in the cache (sheltered briefing area).

Finance is located in Lolo, MT and if you are traveling west, you will not have an opportunity to work with Finance in person during demob.

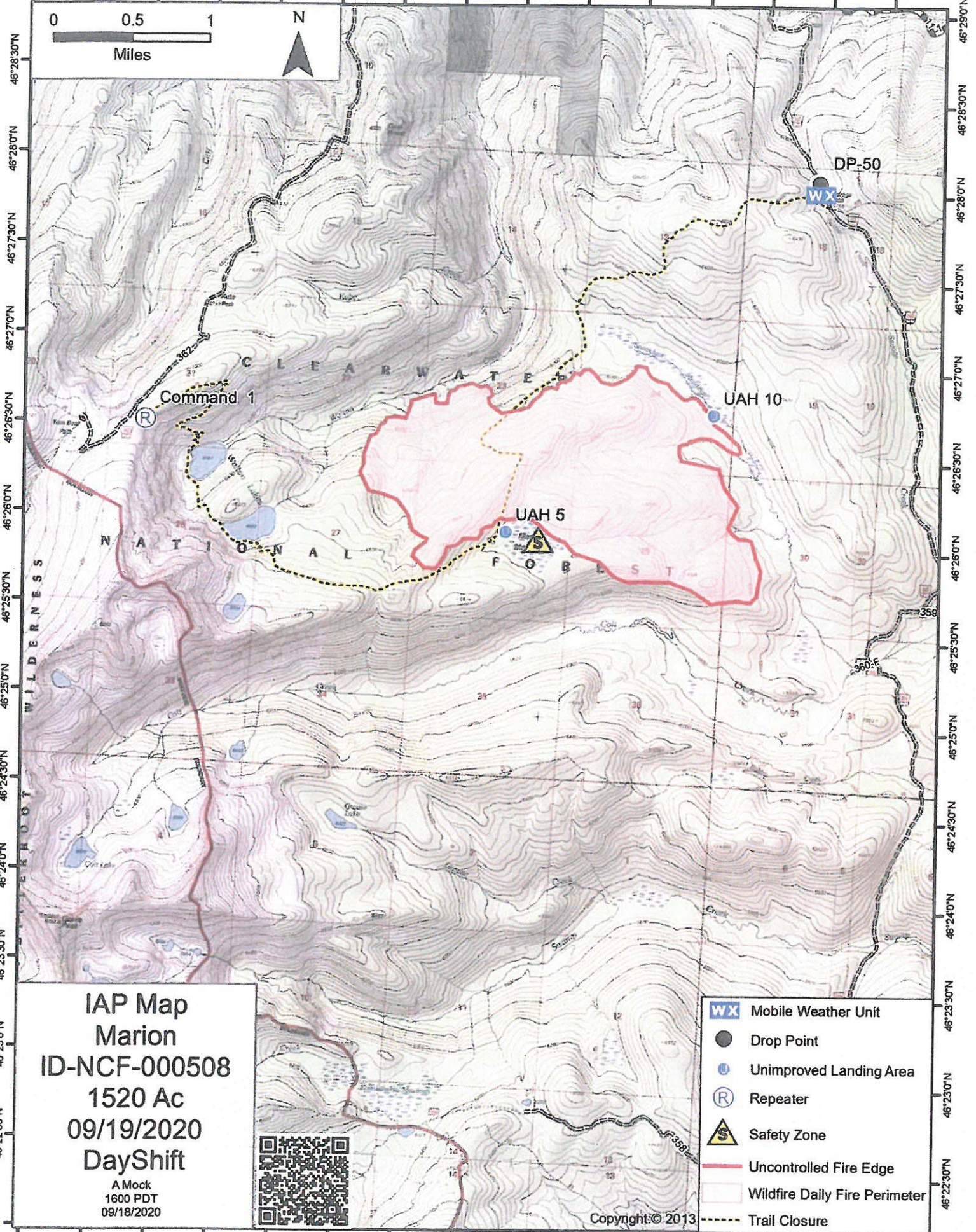
Please do not wait until demob to address your questions or issues about your time.

If you'd like a draft of your invoice or timesheet, please write your LEGIBLE email address on the bottom of your shift ticket/CTR.

### **Most common issues that impact demob:**

1. No date/incorrect dates on shift tickets/CTRs
2. No meal breaks or no justification provided for missed meal breaks
3. Names of all operators/drivers of equipment and transports on shift tickets
4. Tracking mileage on equipment that has mileage-based rates
5. Ensure VINs on shift tickets match the equipment
6. Ensure shift tickets and CTRs have all required signatures

114°44'30"W 114°44'0"W 114°43'30"W 114°43'0"W 114°42'30"W 114°42'0"W 114°41'30"W 114°41'0"W 114°40'30"W 114°40'0"W 114°39'30"W 114°39'0"W 114°38'30"W 114°38'0"W 114°37'30"W



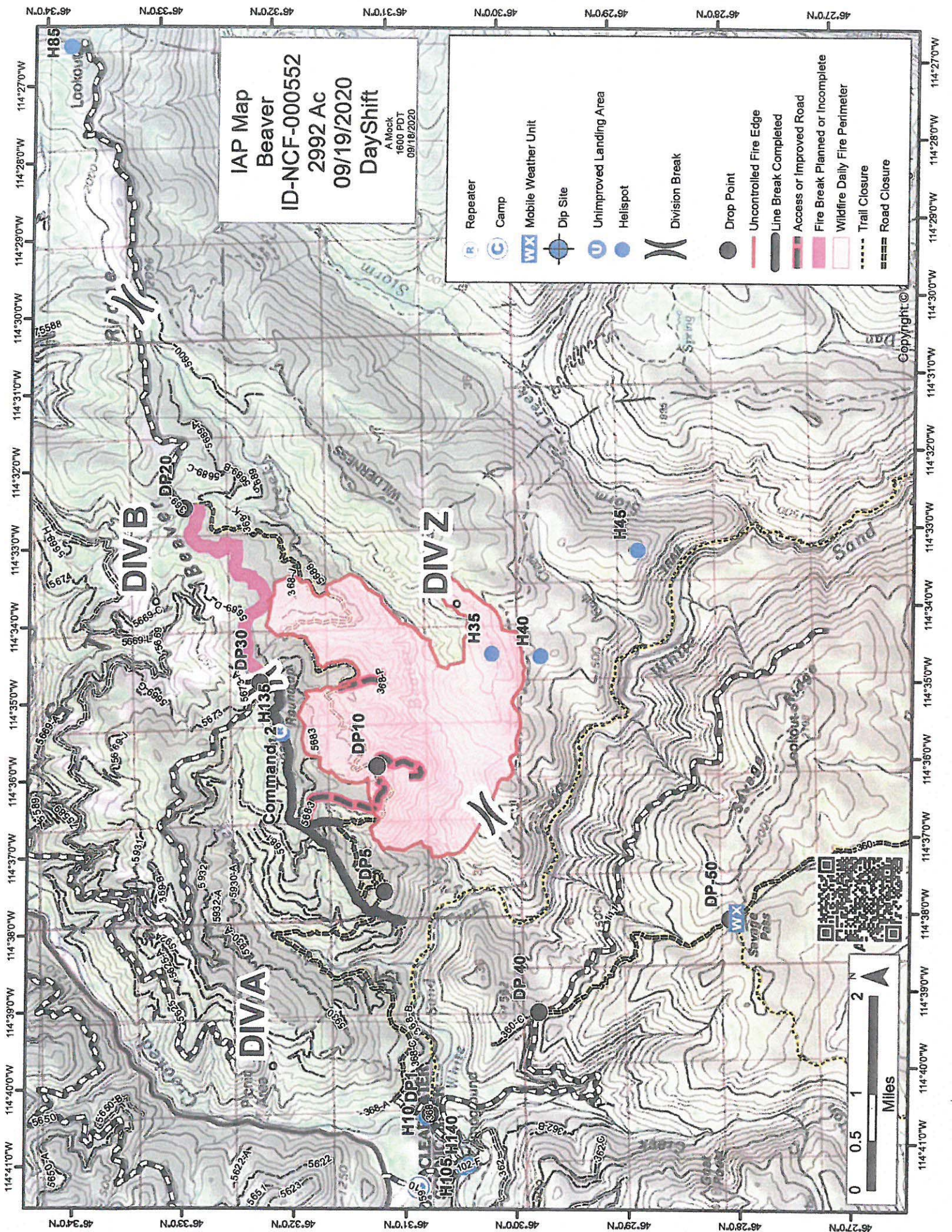
IAP Map  
Marion  
ID-NCF-000508  
1520 Ac  
09/19/2020  
DayShift  
A Mock  
1600 PDT  
09/18/2020



- WX** Mobile Weather Unit
- Drop Point
- ⓪ Unimproved Landing Area
- Ⓡ Repeater
- ⚠ Safety Zone
- Uncontrolled Fire Edge
- ▭ Wildfire Daily Fire Perimeter
- - - Trail Closure

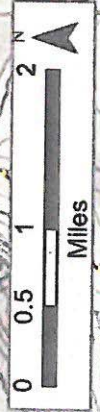
Copyright © 2013

114°44'0"W 114°43'30"W 114°43'0"W 114°42'30"W 114°42'0"W 114°41'30"W 114°41'0"W 114°40'30"W 114°40'0"W 114°39'30"W 114°39'0"W 114°38'30"W 114°38'0"W 114°37'30"W 114°37'0"W



**IAP Map**  
**Beaver**  
**ID-NCF-000552**  
**2992 Ac**  
**09/19/2020**  
**DayShift**  
 A Mock  
 1600 PDT  
 09/19/2020

- Repeater
- Camp
- Mobile Weather Unit
- Dip Site
- Unimproved Landing Area
- Helispot
- Division Break
- Drop Point
- Uncontrolled Fire Edge
- Line Break Completed
- Access or Improved Road
- Fire Break Planned or Incomplete
- Wildfire Daily Fire Perimeter
- Trail Closure
- Road Closure



Copyright ©



# MEDICAL PLAN (ICS 206 WF)

Controlled Unclassified Information//Basic

## Medical Incident Report

**FOR A NON-EMERGENCY INCIDENT, WORK THROUGH CHAIN OF COMMAND TO REPORT AND TRANSPORT INJURED PERSONNEL AS NECESSARY.**

**FOR A MEDICAL EMERGENCY: IDENTIFY ON SCENE INCIDENT COMMANDER BY NAME AND POSITION AND ANNOUNCE "MEDICAL EMERGENCY" TO INITIATE RESPONSE FROM IMT COMMUNICATIONS/DISPATCH.**

**Use the following items to communicate situation to communications/dispatch.**

**1. CONTACT COMMUNICATIONS / DISPATCH (Verify correct frequency prior to starting report)**

*Ex: "Communications, Div. Alpha. Stand-by for Emergency Traffic."*

**2. INCIDENT STATUS: Provide incident summary (including number of patients) and command structure.**

*Ex: "Communications, I have a Red priority patient, unconscious, struck by a falling tree. Requesting air ambulance to Forest Road 1 at (Lat./Long.) This will be the Trout Meadow Medical, IC is TFLD Jones. EMT Smith is providing medical care."*

Severity of Emergency / Transport Priority	<input type="checkbox"/> <b>RED / PRIORITY 1 Life or limb threatening injury or illness. Evacuation need is IMMEDIATE</b> <i>Ex: Unconscious, difficulty breathing, bleeding severely, 2° – 3° burns more than 4 palm sizes, heat stroke, disoriented.</i> <input type="checkbox"/> <b>YELLOW / PRIORITY 2 Serious Injury or illness. Evacuation may be DELAYED if necessary.</b> <i>Ex: Significant trauma, unable to walk, 2° – 3° burns not more than 1-3 palm sizes.</i> <input type="checkbox"/> <b>GREEN / PRIORITY 3 Minor Injury or illness. Non-Emergency transport</b> <i>Ex: Sprains, strains, minor heat-related illness.</i>	
Nature of Injury or Illness & Mechanism of Injury		<i>Brief Summary of Injury or Illness (Ex: Unconscious, Struck by Falling Tree)</i>
Transport Request		<i>Air Ambulance / Short Haul/Hoist Ground Ambulance / Other</i>
Patient Location		<i>Descriptive Location &amp; Lat. / Long. (WGS84)</i>
Incident Name		<i>Geographic Name + "Medical" (Ex: Trout Meadow Medical)</i>
On-Scene Incident Commander		<i>Name of on-scene IC of Incident within an Incident (Ex: TFLD Jones)</i>
Patient Care		<i>Name of Care Provider (Ex: EMT Smith)</i>

**3. INITIAL PATIENT ASSESSMENT: Complete this section for each patient as applicable (start with the most severe patient)**

Patient Assessment: See IRPG page 106

Treatment:

**4. TRANSPORT PLAN:**

Evacuation Location (if different): (Descriptive Location (drop point, intersection, etc.) or Lat. / Long.) Patient's ETA to Evacuation Location:

Helispot / Extraction Site Size and Hazards:

**5. ADDITIONAL RESOURCES / EQUIPMENT NEEDS:**

*Example: Paramedic/EMT, Crews, Immobilization Devices, AED, Oxygen, Trauma Bag, IV/Fluid(s), Splints, Rope rescue, Wheeled litter, HAZMAT, Extrication*

**6. COMMUNICATIONS: Identify State Air/Ground EMS Frequencies and Hospital Contacts as applicable**

Function	Channel Name/Number	Receive (RX)	Tone/NAC *	Transmit (TX)	Tone/NAC *
COMMAND					
AIR-TO-GRND					
TACTICAL					

**7. CONTINGENCY: Considerations: If primary options fail, what actions can be implemented in conjunction with primary evacuation method? Be thinking ahead.**

**8. ADDITIONAL INFORMATION: Updates/Changes, etc.**

**REMEMBER:** Confirm ETA's of resources ordered. Act according to your level of training. Be Alert. Keep Calm. Think Clearly. Act Decisively.