

# Beaver Fire

ID-NCF-000552  
P1NJD820 (0117)  
710044

# Marion Fire

ID-NCF-000508  
P1EKT520 (0117)



# Incident Action Plan

Wednesday  
September 16, 2020  
Operational Period 0700 - 1900

# INCIDENT OBJECTIVES

1. Incident Name  
Beaver Fire, Marion Fire

2. Date Prepared  
09/15/2020

3. Time Prepared  
2100

## 4. Objectives

### High Value Assets and Resources to be Protected:

Public and first responder health from COVID-19; community of Powell and associated private inholdings/property; smoke sensitive communities, including Missoula and the Bitterroot valley; public and private timber lands.

### Leader's Intent:

- Protect human life. Firefighter and public safety will be given the highest priority at all times.
- Minimize the exposure of the public and responders to transmission or infection from COVID-19 by following CDC, county and NPCNF measures relating to social distancing, masks and cleaning procedures.
- Establish and maintain information sharing networks with communities potentially impacted by smoke.
- Manage smoke, while providing for public safety, to provide for desirable air quality and visibility.
- Minimize fire impacts to Whitebark pine seed collection trees.
- Manage any portion of the fire located within a wilderness area using strategies and tactics that are commensurate with wilderness values.
- Take appropriate measures to reduce chances of noxious weed spread onto the forest, including weed wash of vehicles before entering the incident area and when demobilizing.
- Commit incident resources only where there is a high probability of meeting reasonable objectives or when the risk of injury or death can be mitigated.
- Maintain and foster relationships with users of public lands, landowners, agencies and local communities.
- Adhere to applicable work-rest guidelines to reduce fatigue and ensure that assigned fire-fighting personnel receive adequate rest.
- Maintain a workplace and atmosphere of mutual respect and free of any harassment. There will be no tolerance for any unethical, illegal drug or alcohol related incidents.
- Effectively manage costs commensurate with the high value assets and resources to be protected and risks..
- Efficiently demobilize resources in a manner that will ensure safe travel and "right-sizing" consistent with demobilization glidepath direction.

### Operational Objectives:


The incident will be managed utilizing contain/confine and point protection strategies.

5. Prepared By (Planning Section Chief)

Will Bernard: 

ICS 202

6. Approved By (Incident Commander)

Bob Fry: 

NFES 1326

ORGANIZATION ASSIGNMENT LIST		9. Operations Section	
1. Incident Name  Beaver Fire, Marion Fire		Chief-Line	Joe Brabender*, Rich Cowger (t)*
		Chief-Planning	Ron Naber*
2. Date 09/16/20		3. Time Day: 0700 - 1900	
4. Operational Period: Day Shift		a. Divisions/Groups	
		Beaver Fire	
		Division/Group	Alpha / Bravo Day
		Division/Group	Zulu
5. Incident Commander and staff		Division/Group	Haul Group
Incident Commander	Bob Fry, Paul Roose (t)*	Group	Road Group
Deputy IC	Jay Winfield*	Division/Group	
Safety Officers	Marvin Carpenter, Steve Wyatt*	b. Divisions/Groups	
Information Officer	Nick Holloway (t), Paula Rosenthal Short (v)	Marion Fire	
Liaison Officer	Lance Burns		
6. Agency Representatives		Division/Group	Mike
Agency	Name	Division/Group	Kris George*, Jacob Jeresek (t)*
FS Agency Admin	Brandon Knapton, Ron Tipton (t)	Division/Group	
FS Deputy Fire Staff Officer	Barry Ruklic	Division/Group	
FS AFMO	Michael Wood	Division/Group	
		Division/Group	
7. Planning Section		c. Divisions/Groups	
Chief	Will Bernard	Division/Group	
Resources Unit	Jody Pettit*	Division/Group	
Check In	Nolan Baldwin (t)*	Division/Group	
Demobilization Unit	Joe Read	Division/Group	
Documentation	Danny Baggao	Division/Group	
Situation Unit	Chad Ramsay*	Division/Group	
GIS Specialist	Andrew Mock	Division/Group	
Fire Behavior	Eric Trimble*	d. Air Operations Branch	
FS Resource Advisor	Rebecca Lloyd *	Air Operations Branch Director	Sal Garcia (Grangeville)
IT Support	Ed Yeager	Air Attack Supervisor	
		Air Support Supervisor	
		Helicopter Coordinator	
		Air Tanker Coordinator	
8. Logistics Section		10. Finance Section	
Chief	Tyler Rae	Chief	Dale Harrison, Jamie Porter
Facilities Unit		Time Unit Leader	
Supply Unit	Bryan Connelley	Cost Unit	Liz Behrends (t)
Ordering	Cindy Wharton	Personnel	Amy Erickson (t)
Communications Unit	Tom Robbins*	Equipment	Lisa Hawdon
Medical Unit	Teri Miller*		
Base Camp	AJ Angelo*		
Ground Support Unit		*Located at Powell Base Camp (v) = virtual	
Security Unit	Ron Babus*	Prepared by (Resource Unit Leader) Jody Pettit	

## Beaver Fire Weather Forecast

Spot Forecast from the National Weather Service Missoula, MT  
Forecast is based on start time of 0700 PDT on Sept 16, 2020  
529 PM MDT 9/15/2020

### DISCUSSION . . .

A ridge of high pressure will continue to dominate the weather in the fire area through Wednesday night. Expect poor humidity recoveries on mid-slopes and ridges over the next couple of nights. A northeasterly gradient will develop Thursday afternoon ahead of our next weather system. Winds will turn more southwesterly during mid-day on Friday, ahead of a cold front, scheduled to arrive Friday evening. Wetting rains are in the forecast for Saturday and Sunday.

### WEDNESDAY . . .

- \* Sky/Weather.....Partly Cloudy/Smokey.
- \* CWR (> 0.10 Inch)...0%.
- \* LAL.....1.
- \* Max Temperature.....75-80°F.
- \* Min Humidity.....16-21%.
- \* Wind (20 ft).....SE 5-6 mph becoming West 5-10 mph w/gusts to 15 mph by afternoon.
- \* Haines Index.....5 moderate.

### WEDNESDAY NIGHT . . .

- \* Sky/Weather.....Mostly Clear/Smokey.
- \* CWR (> 0.10 Inch)...0%.
- \* LAL.....1.
- \* Min Temperature.....55-60°F.
- \* Max Humidity.....30-35%.
- \* Wind (20 ft).....SE at 5 mph.

### THURSDAY . . .

- \* Sky/Weather.....Mostly Sunny/Haze.
- \* CWR (> 0.10 Inch)...0%.
- \* LAL.....1.
- \* Max Temperature.....80-85°F.
- \* Min Humidity.....16-21%.
- \* Wind (20 ft).....SE 5 mph becoming East 5-10 mph w/gusts to 15 by afternoon.
- \* Haines Index.....5 moderate.

### THURSDAY NIGHT . . .

- \* Sky/Weather.....Mostly Clear/Haze.
- \* CWR (> 0.10 Inch)...0%.
- \* LAL.....1.
- \* Min Temperature.....55-60°F.
- \* Max Humidity.....30-35%.
- \* Wind (20 ft).....East 5-8 mph.

**FRIDAY**...Mostly Clear/Haze. Lows 45-50. Highs 70-75. Min RH: 26-31%. SW winds to 15 mph.

**SATURDAY**..., Mostly Cloudy with a 70% chance of a half inch of rain. Possible snow above 6,000'.  
Lows 45-55. Highs 65-75. South winds to 10 mph.

**SUNDAY**...Partly Cloudy with rain showers. Lows 40-50. Highs 60-70. SW winds to 10 mph

**MONDAY**...Mostly Clear. Lows 40-50. Highs 65-77.

## FIRE BEHAVIOR FORECAST

<b>FORECAST NUMBER:</b> 15	<b>INCIDENT TYPE:</b> Wildfire
<b>FIRE NAME:</b> Beaver/Marion	<b>OPERATIONAL PERIOD:</b> Sept 16, 2020 Wednesday
<b>DATE ISSUED:</b> Sept 15, 2020	<b>TIME ISSUED:</b> 1800
<b>UNIT:</b> ID-Clear-Nez	<b>PREPARED BY:</b> Eric Trimble – FBAN

### INPUTS

#### **WEATHER SUMMARY:**

**Sky Weather:** Partly Cloudy/Smokey.  
**CWR (>0.10"): 0%**  
**Max Temps:** 75-80°  
**Min RH:** 16-21% **Haines:** 5 (moderate). **LAL:** 1  
**Winds (20 ft):** West 5-10 mph w/gusts to 15 mph by afternoon.

#### **FUELS:**

**Beaver:** Mixed conifer forest dominated by DF, LPP, WL, SAF, and ES; with WRC on north aspects/valley bottoms. Mature SAF/ES conifer fuels with high crown bulk density and low crown base height. Mature DF/GF/WL/LPP conifer fuels with high crown bulk density and high crown base height. Herbaceous and live woody fuels are largely cured and will contribute to surface fire spread.

**Marion:** Mature, relatively open SAF and ES with dispersed pockets of regen and dead/down fuels. Mature SAF/ES conifer fuels with low to moderate crown bulk density and yet low crown base height.

**Fine Fuels:** 3-5%; 10-hr: 5%; 100hr: 7%; 1000hr: 11%

**ERC:** 85<sup>th</sup> percentile.

### OUTPUTS - FIRE BEHAVIOR

#### **GENERAL:**

Terrain and fuel-driven fire. Expect active surface fire with group-tree torching and short-range spotting. Off-site smoke impacts should moderate fire behavior, particularly within the lower areas of the fire. Highest activity to occur within the mature/dense stands of spruce and sub-alpine fir, particularly above 5,500'.

Backing/flanking spread 1-2 ft/min with flames 2-4 ft. Head fire with possible 5-8 ft. flame lengths and 10-15 ft/min rates of spread with wind/slope alignment, higher with torching and short-range spotting.

**Probability of Ignition (PIG): 70-80%** during the peak of the burning period.

#### **SPECIFIC:**

**Beaver Fire** – Expect active surface fire with group-tree torching and short-range spotting, backing and flanking. Fire will continue to move uphill, and to the ENE. Depending on shading from off-site smoke a modest to significant growth in the fire perimeter is anticipated.

**Marion Fire** – Expect active surface fire with group-tree torching and short-range spotting, backing and flanking. Fire will continue to expand to the North and East. Depending on shading from off-site smoke a significant growth in the fire perimeter is anticipated.

**AIR OPERATIONS:** Expect poor visibility due to smoke with light turbulence.

**SAFETY:** Maintain good situational awareness as conditions remain conducive for crown fire activity.

# ASSIGNMENT LIST

1. Branch	2. Division/Group Alpha / Bravo Day
-----------	--

3. Incident Name <b>Beaver Fire</b>	4. Operational Period Date: 09/16/20 Day 0700 - 1900
--	---

5. Operations Personnel			
Operations Chief	Joe Brabender, Rich Cowger (t)	Division/Group Supervisor	Manny Mendoza
Branch Director		Air Support Group Supervisor	Sal Garcia

6. Resources Assigned This Period							
Strike Team/Task Force/ Resource Designator	Last Shift	Leader	No. Pers.	Trans. Needed	Drop Off PT./Time	Pick Up PT./Time	
O-12 TFLD	9/17	Jacob Cafferty	1	N			
O-15 TFLD (t)	9/17	Clint Dean	1	N			
C-5 TY2IA Palouse	9/18	Cody Cline, Chad Borg (t)	19	N			
C-7 HC2 Lava Forestry	9/18	Ruiz, Solida (t)	20	N			
E-44 ENG6 Peanut Pie	9/19	Sam Elkins	3	N			
E-71 ENG6 Torch Fire	9/21	Donavun Davis	3	N			
O-16 HEQB	9/17	Robbie Easley	1	N			
O-33 HEQB (t)	9/18	Andrew Brown	1	N			
E-38 FORW Hester	9/19	Jack Hester	1	N			
E-50 EXCA2 Cox	9/20	Marvin Gregg	2	N			
E-55 MAST Downing	9/19	Wes Renne	2	N			
E-59 SKD1 Welch Brothers	9/19	Craig Welch	2	N			
E-64 SKD1 Bonnalie	9/19	Clint Mader	1	N			
O-2.04 SOF2	9/21	Steve Wyatt	1	N			
E-39 AMBU AMR NW	9/17	Patterson, Amback	2	N			

**7. Control Operations**

**Task:** Scout and establish containment lines to the West of the fire.  
**Purpose:** Prevent fire from impacting private property to the West and North of the fire.  
**End State:** Fire did not reach private property to the West and North of the fire.

**8. Special Instructions**

Call out mile marker # on radio, TAC 11  
 LCES shall be in place prior to engaging fire.  
 All COVID-19 mitigation protocols shall be followed.

9. Division/Group Communication Summary					
Function	Frequency - RX	Frequency - TX	Tone	Channel	Comments
TAC 6	168.0500 N	168.0500 N	136.5	6	
TAC 11 (Logging)	168.2500 N	168.2500N	136.5	11	
A/G	167.1250 N	167.1250 N		15	
CMD 1	170.0000 N	166.6750 N	136.5	1	
CMD 2	170.6875 N	166.5750 N	136.5	2	

Prepared by (RESL) Jody Pettit	Approved by (PSC2) Will Bernard	Date 09/15/20	Time 2000
-----------------------------------	------------------------------------	------------------	--------------



<b>ASSIGNMENT LIST</b>				1. Branch		2. Division/Group Haul Group	
3. Incident Name <b>Beaver Fire</b>			4. Operational Period Date: 09/16/20		Day 0700 - 1900		
5. <b>Operations Personnel</b>							
Operations Chief		Joe Brabender, Rich Cowger (t)		Division/Group Supervisor		Danny Lemer	
Branch Director				Air Support Group Supervisor		Sal Garcia	
6. <b>Resources Assigned This Period</b>							
Strike Team/Task Force/ Resource Designator	Last Shift	Leader	No. Pers.	Trans. Needed	Drop Off PT./Time	Pick Up PT./Time	
O-31 TFLD	9/15	Chad Daugherty	1	N	Extension?		
O-32 TFLD (t)	9/19	William Mack	1	N			
E-45 ENG6 Firebrand	9/19	Lauren Bendel	2	N			
E-83 Log Processor Hester	9/25	Jeremy Hester	2	N			
E-40 Log Truck Anderson	9/19	Brett Flodin	1	N			
E-41 Log Truck Anderson	9/19	Kelly Glessner	1	N			
E-42 Log Truck Anderson	9/19	Casey Nelson	1	N			
E-49 ECXA2 Flash Excavating	9/20	Gordon Eckel	2	N			
E-66 EXCA2 Madden	9/20	Moses Madden	1	N			
E-53 Log Loader Cox	9/19	Rick Cox	2	N			
E-81 Log Loader Hester	9/24	Matt Scott	1	N			
O-11 EMTF	9/24	Jessica Tullis	1	N			
O-22 EMPF	9/26	Alyse Gutierrez	1	N			
7. Control Operations							
<b>Task:</b> Move log decks to DP1. Monitor fire. <b>Purpose:</b> Complete the fuel break. Ensure safety of log trucks and fire fighters. <b>End State:</b> Log decks have been moved to DP1. Everyone is safe.							
8. Special Instructions							
Call out mile marker # on radio, TAC 11 LCES shall be in place prior to engaging fire. All COVID-19 mitigation protocols shall be followed.							
9. <b>Division/Group Communication Summary</b>							
Function	Frequency - RX	Frequency - TX	Tone	Channel	Comments		
TAC 7	168.2000 N	168.2000 N	136.5	7			
TAC 11 (Logging)	168.2500 N	168.2500N	136.5	11			
A/G	167.1250 N	167.1250 N		15			
CMD 1	170.0000 N	166.6750 N	136.5	1			
CMD 2	170.6875 N	166.5750 N	136.5	2			
Prepared by (RESL) Jody Pettit		Approved by (PSC2) Will Bernard		Date 09/15/20		Time 2000	






# AIR OPERATIONS SUMMARY (ICS 220)

<b>1. Incident Name:</b> Beaver ID-NCF-000552 Marion ID-NCF-000508	<b>2. Operational Period:</b> Date From: Sept. 16, 2020      Date To: Sept. 16, 2020 Time From: 0730                      Time To: 2000	<b>3. Sunrise:</b> 0622 <b>Sunset:</b> 1851	<b>6. Temporary Flight Restriction Number:</b> Altitude: TFR 0/6099 - Freq 127.0750 Center Point: 7NM / Alt 10,000			
<b>4. Remarks (safety notes, hazards, air operations special equipment, etc.):</b> * Aviation requirement will be reviewed and applied where needed Consider the safety and risk analysis while planning and ordering A/C * A/C availability will be shared as needed, unless assigned to the specific incident * A/C Available & assigned to the Powell - order through comm	<b>5. Ready Alert Aircraft:</b> Medivac: 1HQ Short Haul Helicopter New Incident: Two Bear Air-(Hoist @	<b>9. Fixed-Wing (category/kind/type, make/model, N#, base):</b> Air Tactical Group Supervisor Aircraft:				
<b>7. Personnel:</b>	<b>8. Frequencies:</b>	AM                      FM	Air Tactical Group Supervisor Aircraft:			
Name: Sal Garcia Phone Number: 760 310-0138	Air/Air Fixed-Wing Air/Air Rotary-Wing - Flight Following Air/Ground Command Deck Coordinator Take-Off & Landing Coordinator Air Guard	127.0750 A-10 167.1250 A-9 Refer to the Comm Plan 168.6250	A/C avail. at Grangeville Airport / Helibase Air Attack - primary AA-117 (N44NC) AA-200KQ @ GIC Other Fixed-Wing Aircraft: Seats - T-822 @ GIC & T-835 @ GIC Refer to the Aviation Map for Helispot info - Lat / Long, specific Water dipping sites on the map w/lat & Long			
<b>10. Helicopters (use additional sheets as necessary):</b>						
FAA N# Assigned to H-16920 H-974H HB-116 HG-562AJ	Category/Kind/Type BEAVER INC. T2 T3 T1 T1	Make/Model Bell 212 Bell 407 Kaman Aero K-1200 CH-47D	Base Powell For Planning Located at Grangeville - Airport	Available Available Local Available Local Available local Available Local	Start 0800 0800 0800 0800	Remarks Order through dispatch Order through dispatch Standard
<b>11. Prepared by: Name:</b> Sal Garcia		Position/Title: AOB Signature: _____				

# AIR OPERATIONS SUMMARY (ICS 220)

<b>1. Incident Name:</b> Beaver ID-NCF-000552 Marion ID-NCF-000508	<b>2. Operational Period:</b> Date From: Sept. 16, 2020 Time From: 0730 Date To: Sept. 16, 2020 Time To: 2000	<b>3. Sunrise:</b> 0622 <b>Sunset:</b> 1851		
<b>12. Task/Mission/Assignment (category/kind/type and function includes: air tactical, reconnaissance, personnel transport, search and rescue, etc.):</b>				
Category/Kind/Type and Function	Name of Personnel or Cargo (if applicable) or Instructions for Tactical Aircraft	Mission Start	Fly From	Fly To
	A/C request will be assigned as needed with Ops and Divisions approval. Helicopter N16920, Bell 212 is assigned to the Beaver Inc.	0800		
	Refer to the Aviation Map, for specific location, marking and lat / long for respective sites and spots.			
	Additional A/C's are available at Missoula, Montana Airbase if needed			
	Additional A/C's are assigned at Grangeville airport -			
	To contact AOBD, contact Powell Communication and they will forward the message to me.			
	Pending Approval -- Ordered 1 AA to assist with the operation / lead plane			
	2 - Heavy Airtankers to be used to secure and enforce the line			
	Comm - contact Div A / M prior to launching of Airtanker - Timber / Private property /			
	Scheduled Recon: Type III, at Powell @ 1500 w/3 flight helmets			
	Type I helicopter on order for 1100 (9/15/2020) Fire, contact Div A on A/G			
	Comm - contact Div A / M prior to launching of Helicopter - N16920 Type II, available for bucket operations when needed			
<b>11. Prepared by: Name:</b> <u>Sal Garcia</u> <b>Position/Title:</b> <u>AOBD</u> <b>Signature:</b> _____ <b>ICS 220, Page 2</b> <b>Date/Time:</b> <u>9/15/2020 - 1800</u>				

INCIDENT RADIO COMMUNICATIONS PLAN		Incident Name BEAVER FIRE				Date/Time Prepared 9/15/2020 1500		Operational Period Date/Time 9/16/2020 0700 – 9/17/2020 0700	
Ch #	Function	Channel Name	Assignment	RX Freq N or W	RX Tone	TX Freq N or W	Tx Tone	Mode	Remarks
1	Repeater	Command 1	All Resources	170.0000 N	136.5	166.6750 N	136.5	A	To Communications
2	Repeater	Command 2	All Resources	170.6875 N	136.5	166.5750 N	136.5	A	To Communications
3									
4									
5									
6	Tactical	TAC 6	DIV A/B Day	168.0500 N	136.5	168.0500 N	136.5	A	NIFC Tac
7	Tactical	TAC 7	DIV A/B Night	168.2000 N	136.5	168.2000 N	136.5	A	NIFC Tac
8	Tactical	TAC 8	DIV Z	168.6000 N	136.5	168.6000 N	136.5	A	NIFC Tac
9	Tactical	Tac 9	DIV M	166.7250 N	136.5	166.7250 N	136.5	A	NIFC Tac
10	Tactical	TAC 10	Roads	166.7750 N	136.5	166.7750 N	136.5	A	NIFC Tac
11	Tactical	Tac 11	Logging	168.2500 N	136.5	168.2500 N	136.5	A	NIFC Tac
12	Local	E Beaver Ridge	I/A	171.5750 N		166.2625 N	100.0	A	NFS Repeater
13	Local	N Rocky Ridge	I/A	171.5750 N		166.2625 N	162.2	A	NFS Repeater
14									
15	Air/Ground	A/G Primary	All	167.1250 N		167.1250 N		A	NIFC A/G Primary
16	Air Guard	Air Guard	All	168.6250 N		168.6250 N	110.9	A	<b>Emergency</b>
Prepared By (Communications Unit)				Incident Location					
Thomas Robbins COML 				Powell ID					

The convention calls for frequency lists to show four digits after the decimal place, followed by either an "N" or a "W", depending on whether the frequency is narrow or wide band. Mode refers to either "A" or "D" indicating analog or digital (e.g. Project 25) or "M" indicating mixed mode. All channels are shown as if programmed in a control station, mobile or portable radio. Repeater and base stations must be programmed with the Rx and Tx reversed.

**HEALTH AND SAFETY MESSAGE**

***SAFETY* starts with *YOU***

We are **ALL** accountable for **SAFE** behaviors

INCIDENT: Beaver Fire and Marion Fire

DATE: 09-16-2020 TIME: 0700 to 1900

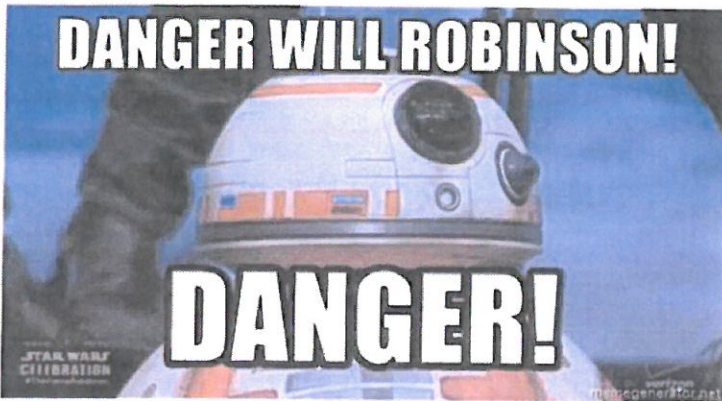
**Major Hazards and Risks:**

**Snags:** Dead and green weakened by fire (they never go away).

**Driving:** Today may be the first day you drive on local roads or the hundredth time. Driving these roads could be the greatest hazard of your day.

**Complacency:** Can sneak up on you and in a second ruin everything you have accomplished the last two weeks.

**COVID 19:** Continue to be vigilant on its spread and social distance, wear masks and wash hands.



**Will Robinson always had a robot looking out for him.**

**We do not have that luxury. We must watch out for ourselves and each other.**

**LOOK Lewis, someone is not wearing their mask.**

**I know Clark, but they are social distancing.**





**Please continue to wear a mask or utilize social distancing. We appreciate your cooperation!**

**If we work as a team, we will be successful as a team.**

**Your safety team, Marvin Carpenter, Steve Wyatt  
And  
EACH OF YOU!**

## MEDICAL PLAN (ICS 206 WF)

<b>1. Incident/ project name and address:</b>						<b>2. Operational Period: Date/Time</b>					
Beaver Powell Idaho						9-16-20 0700-1900					
<b>3. Ambulance Services</b>											
Name			Complete address				Phone & EMS Frequency		ALS ✓		
Missoula Ambulance Service INC			2600 Palmer St Missoula, MT 59808				406-549-2325		X		
Powell QRU			Powell Ranger Station				911				
AMR Ambulance			Division A				Command				
<b>4. Air Ambulance Services</b>											
Name			Location/remarks			Phone & EMS Frequency		ALS ✓	hoist ✓	night ✓	
Life Flight Network			Missoula, MT/Sand Point, ID/Butte			911 406-829-7070		X		X	
Alert Air Ambulance			Kalispell, MT			911 406-752-5111		X		X	
Two Bear Air			Whitefish, MT			911 406-297-2121			X	X	
<b>5. Hospitals</b>											
Name and Address			Phone		Level of care	Heli Pad ✓	If Heli pad, Lat./Long. (DD mm.mmm') Datum WGS84			Travel time to hosp: min's Air Ground	
Eastern Idaho Regional Medical Center 3100 Channing Way Idaho Falls, ID 83404			208-529-6111		Trauma II Burn center	X	N 43 28' 17" W 111 59' 29.5"			285	
St. Patrick Hospital 500 Broadway Missoula, MT			406-543-7271		Trauma II	X	N 46 52.524 W 113 59.969			68	
Community Medical Center 2827 Ft. Missoula Rd Missoula, MT			406-728-4100		Trauma III	X	N 46 50.909 W 114 02.865			64	
<b>6. Area Location Capability</b>											
Branch, Div, Group	Aid Station Name; Responders		Equipment available	Emergency frequency	Ambulance ETA to site: min's Air Ground		Nearby Heli spot &/or DP	Heli spot &/or DP lat/long (DD mm.mmm') Datum WGS 84			
Powell Ranger Station	MEDL/EMPF Teri Miller Jessica Tullis-EMTF		ALS								
Powell FOB/spike	Rosemary Myers Alyse Gutierrez		AEMT EMPF								
Division A	Jerry Patterson 509-999-0457 Josh Amback 509-688-7593		EMPF EMTF								
<b>7. Notes, special procedures:</b> Use Medical Incident Report for medical response and Medical Incident Pre-Planning worksheet for briefing. Medical Emergencies should be reported in accordance with Lolo/Kootenai Forest procedures.											
<b>8. Prepared by (Medical Unit Leader)</b>				<b>9. Date/Time</b>		<b>10. Reviewed by (Safety Officer)</b>				<b>11. Date/Time</b>	
Teri Miller 				9/15/20 1700		Steve Wyatt 				9/15/20 1700	

ICS-206 <b>COVID-19 PLAN</b>	1. Incident Name <b>Beaver Fire</b>	2. Date Prepared <b>9-15-20</b>	3. Time Prepared	4. Operational Period
---------------------------------	--	------------------------------------	------------------	-----------------------

**INCIDENT MEDICAL AID STATIONS**

MEDICAL AID STATION	LOCATION	ISOLATION?	
		YES	NO
Covid precheck in screening	Base camp/spike		X
Daily screening-road check	Powell Ranger Station	X	
Daily self checks	ICP		X

**LOCAL SUPPORT**

**A. OFF-SITE ISOLATION FACILITIES**

NAME	LOCATION	PHONE	MEDICAL	
			YES	NO
Hotels in Missoula, MT	Contact SWZ COVID logistics	406-540-2965		X

**COVID SCREENING PROCEDURES**

ICP		medical	
		ALS	BLS
<b>BASE CAMP SPIKE</b>	Covid precheck screening prior to checking in to fire Daily covid self check screening for all modules		X
<b>MEDICAL UNIT-Powell Ranger Stations</b>	Daily covid screening prior to briefing Cold/warm/hot medical units present (on site isolation present)	X	

**TESTING FACILITIES**

NAME	ADDRESS	Apointment required		Phone	Days operation		Hours operation	
		Yes	No		Work day	Week end	WD	WE
Community Medical Center Rapid tes outpatient lab	2827 Fort Missoula rd Missoula MT	X		406-327-4378	M-F	Sat	0630 1730	0830 1330
Missoula City-county Health depart	4025 flynn lane Missoula MT	X		406-258-4770	M-F	NA	0900 1600	NA
Clearwater Valley Hospital Orfino, ID	301 Cedar ST Orfino, Id		X	hospital 208-476-4555 Lab 208-476-8035	M-F	Sat	0900 1700	0900 1700

**COVID-19 PROCEDURES**

**Field Screenings-self check screening.** Postive Symptoms? Isolate patient, notify MEDL follow instuctions given.

**First aid station Screening.** Postive systoms? Isolate patient Notify MEDL, follow instructions

Notes: Isolation can take place in a vehicle short term or at Medical unit. Vehicle to be completely disinfected afterward before use. MEDL can assist contractors with Information. Expectations that Module of 1 concepts will be followed. See list of Covid expectations given to all resources upon checkin and follow. Nearest/reccomended testing is at Community Medical Center rapid 2 hour results.

Prepared by medical unit leader  
Teri Miller 406-544-3070

*Teri Miller*

Reviewed by saftey officer  
Steve Wyatt

*Steve Wyatt*

## ASSIGNMENT-SPECIFIC MEDICAL EMERGENCY ACTION PLAN

### Pre-Planning for today's assignment

What are the likely hazards that could cause injuries? What kind of severe injuries?		
Who is the likely in-charge DIVS or overhead for an emergency in your assigned area today? (i.e. "Division Zulu")		
Who are the Medical personnel assigned to your part of the incident? What are their capabilities?		
Other Emergency Responders: fire dept., crash rescue, ambulance?		
Communications: Command channel, Air to Ground, Medical helicopters, local rescue/medical?		
Transportation methods available	Ground vehicle, drop point, coordinates, travel route?	
	Aircraft I.D, Helispot names, coordinates? Hoist capable, internal transport	
	Other available methods - contingency	
Most likely workforce for evacuation		

### Response checklist

#### Who takes charge?

- DIVS or designated Overhead manages the overall scene and evacuation process.
- Medical personnel and emergency responders manage patients and assist in rescue/extrication.
- OPS and IC make command decisions so the emergency can be given full attention and management. They continue to manage ongoing incident operations.

#### Response sequence:

- First, secure the scene and protect responders and patients from further injury. Render first aid.
- Clear the Command channel for "Emergency Traffic only" if this is a critical emergency. If not, inform Communications of non-critical-emergency status and use normal communications.
- Contact closest Medical personnel and DIVS or designated Overhead for response.

Information for Communications: **Medical Incident Report – See last page of IAP and IRPG pages 116 and 119.**

Helicopter Extraction Operations: **See IRPG pages 116 and 117.**

Severe Weather: In the event of forecasted severe weather, **implement Incident Severe Weather Plan.**

Incident Within Incident: Upon arriving at the incident, all overhead should **obtain and review the team's Incident Within Incident Plan.**

## Information Message

**“A picture is worth a thousand words”**

1. **Public Information is seeking photos and videos** for Inciweb, social media, and other information products. Photos and videos draw attention and help tell the story of the fire. The photos and videos that we have obtained from personnel in the field have gotten a lot of traction on social media.

We are looking for anything of interest that could be related to the Beaver (or Marion) Fire. Photos that show the hard work being done on the fire will really help the public understand what the team is doing and the need for this effort. Crews working, equipment, and air operations, mixed in with photos of the fire itself really work well.

How to get your photos to Information:

- a. Transfer photos and videos to whomever attends the 0700 Operational Period Briefing so they can provide them directly to the PIO at the meeting.
- b. Email them to [2020.beaver@firenet.gov](mailto:2020.beaver@firenet.gov) or give to someone with internet access to send.

Please include any relevant information that may help put the photo in context.

2. A **Lost and Found** box is located inside the Supply Unit yurt.
3. People wishing to send **mail** should drop it off within the Supply Unit yurt.

# BEAVER FIRE - MARION FIRE

## Telephone List

Last Edited: 09/15 @ 1630

IC	BOB FRY	406-431-0102
DEPUTY IC	JAY WINFIELD	208-993-0768
IC (T)	PAUL ROOSE	406-640-1337
LIAISON	LANCE BURNS	218-464-8465
INFORMATION	NICK HOLLOWAY	406-370-9381
OPERATIONS PLANNING	RON NABER	406-640-1614
OPERATIONS - LINE	JOE BRABENDER	406-691-0369
OPERATIONS - LINE (T)	RICH COWGER	406-780-1317
SAFETY	MARVIN CARPENTER	406-594-5728
SAFETY	STEVE WYATT	406-437-8386
PLANNING	WILL BERNARD	919-619-1408
RESOURCES	JODY PETTIT	208-290-8840
DEMOBILIZATION	JOE READ	406-253-1130
CHECK IN (T)	NOLAN BALDWIN	406-396-0074
DOCUMENTATION	DAN BAGGAO	575-910-7179
SITUATIONS	CHAD RAMSAY	208-290-2253
COMPUTER HELP	ED YEAGER	818-360-2519
PLANS OFFICE - POWELL		208-942-3123
		208-942-3133
READ	REBBECA LLOYD	406-830-0998
FINANCE	DALE HARRISON	715-499-1457
FINANCE	JAMIE PORTER	406-830-5220
COMP/CLAIMS (T)	AMY ERICKSON	406-207-3516
LOGISTICS	TYLER RAE	406-425-1038
BASE CAMP MGR	AJ ANGELO	406-544-3751
ORDERING	CINDY WHARTON	423-341-1243
COMMUNICATIONS	TOM ROBBINS	406-698-7500
MEDICAL	TERI MILLER	406-544-3070
SECURITY	RON BABUS	570-269-7741

## Finance Message

Video conferencing will be available daily at 0800 and 2000 at the Powell Ranger Station located in the covered parking in the cache (sheltered briefing area).

Finance is located in Lolo, MT and if you are traveling west, you will not have an opportunity to work with Finance in person during demob.

Please do not wait until demob to address your questions or issues about your time.

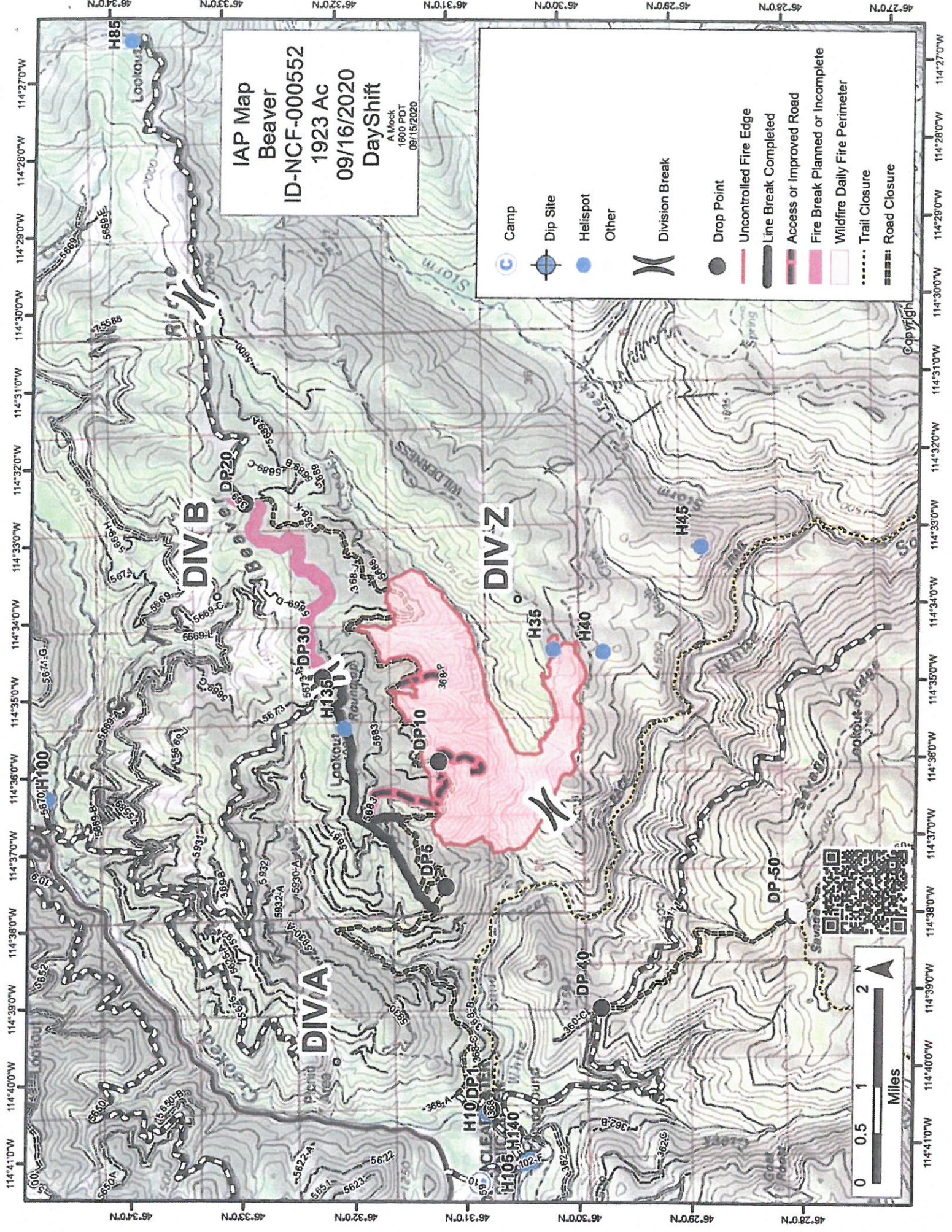
If you'd like a draft of your invoice or timesheet, please write your **LEGIBLE** email address on the bottom of your shift ticket/CTR.

### **Most common issues that impact demob:**

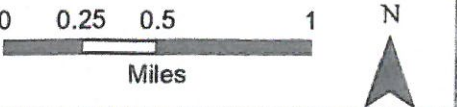
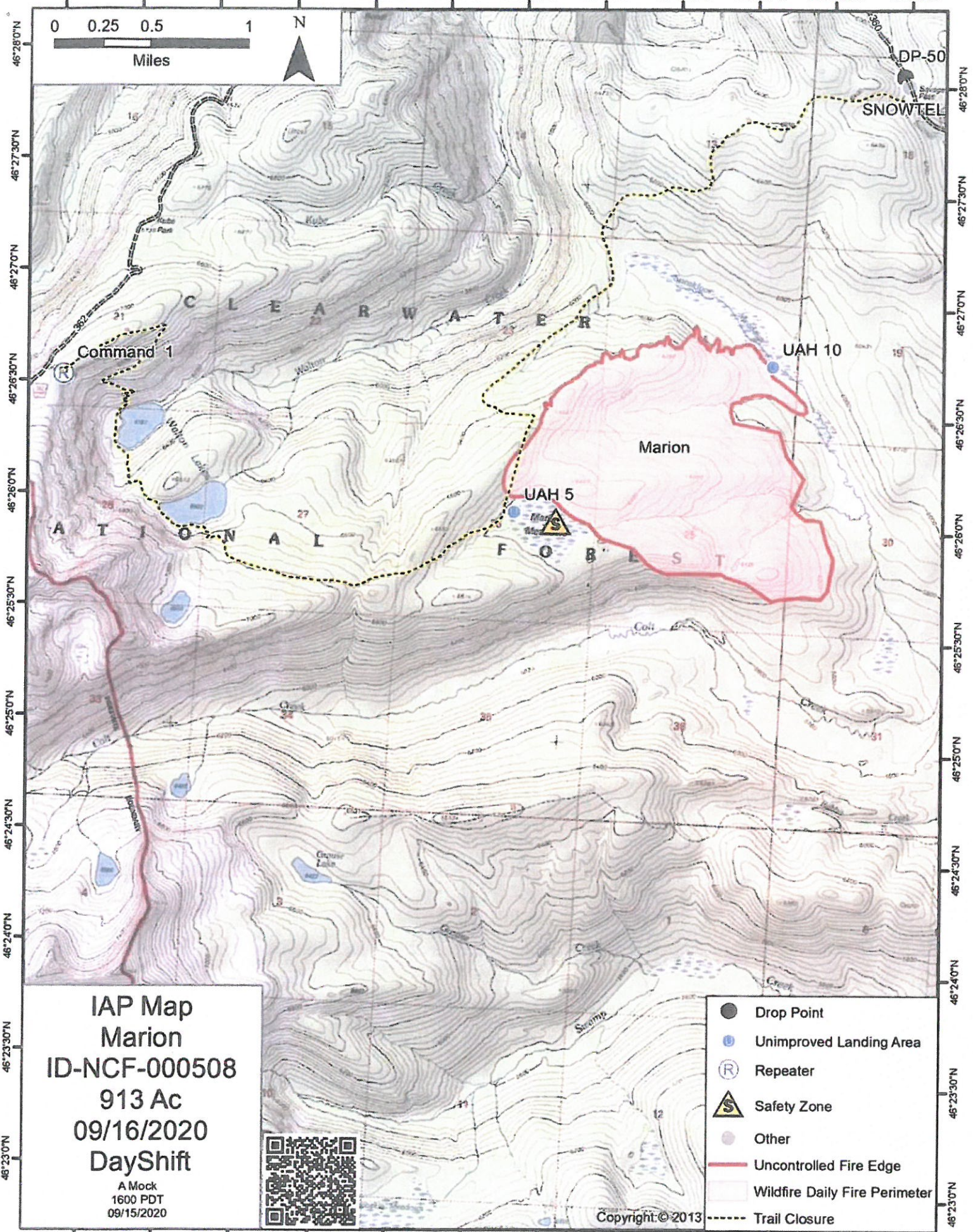
1. No date/incorrect dates on shift tickets/CTRs
2. No meal breaks or no justification provided for missed meal breaks
3. Names of all operators/drivers of equipment and transports on shift tickets
4. Tracking mileage on equipment that has mileage-based rates
5. Ensure VINs on shift tickets match the equipment
6. Ensure shift tickets and CTRs have all required signatures

IAP Map  
 Beaver  
 ID-NCF-000552  
 1923 AC  
 09/16/2020  
 DayShift  
 A Mock  
 1600 PDT  
 09/15/2020

	Camp
	Dip Site
	Helispot
	Other
	Division Break
	Drop Point
	Uncontrolled Fire Edge
	Line Break Completed
	Access or Improved Road
	Fire Break Planned or Incomplete
	Wildfire Daily Fire Perimeter
	Trail Closure
	Road Closure



114°43'30"W 114°43'0"W 114°42'30"W 114°42'0"W 114°41'30"W 114°41'0"W 114°40'30"W 114°40'0"W 114°39'30"W 114°39'0"W 114°38'30"W 114°38'0"W



IAP Map  
Marion  
ID-NCF-000508  
913 Ac  
09/16/2020  
DayShift

A Mock  
1600 PDT  
09/15/2020



- Drop Point
- ⊙ Unimproved Landing Area
- Ⓡ Repeater
- ⚠ Safety Zone
- Other
- Uncontrolled Fire Edge
- Wildfire Daily Fire Perimeter
- - - Trail Closure

Copyright © 2013

114°43'0"W 114°42'30"W 114°42'0"W 114°41'30"W 114°41'0"W 114°40'30"W 114°40'0"W 114°39'30"W 114°39'0"W 114°38'30"W 114°38'0"W 114°37'30"W



# MEDICAL PLAN (ICS 206 WF)

Controlled Unclassified Information//Basic

## Medical Incident Report

**FOR A NON-EMERGENCY INCIDENT, WORK THROUGH CHAIN OF COMMAND TO REPORT AND TRANSPORT INJURED PERSONNEL AS NECESSARY.**

**FOR A MEDICAL EMERGENCY: IDENTIFY ON SCENE INCIDENT COMMANDER BY NAME AND POSITION AND ANNOUNCE "MEDICAL EMERGENCY" TO INITIATE RESPONSE FROM IMT COMMUNICATIONS/DISPATCH.**

**Use the following items to communicate situation to communications/dispatch.**

**1. CONTACT COMMUNICATIONS / DISPATCH** (Verify correct frequency prior to starting report)

*Ex: "Communications, Div. Alpha. Stand-by for Emergency Traffic."*

**2. INCIDENT STATUS:** Provide incident summary (including number of patients) and command structure.

*Ex: "Communications, I have a Red priority patient, unconscious, struck by a falling tree. Requesting air ambulance to Forest Road 1 at (Lat./Long.) This will be the Trout Meadow Medical, IC is TFLD Jones. EMT Smith is providing medical care."*

Severity of Emergency / Transport Priority	<input type="checkbox"/> <b>RED / PRIORITY 1</b> Life or limb threatening injury or illness. Evacuation need is <b>IMMEDIATE</b> <i>Ex: Unconscious, difficulty breathing, bleeding severely, 2<sup>o</sup> - 3<sup>o</sup> burns more than 4 palm sizes, heat stroke, disoriented.</i> <input type="checkbox"/> <b>YELLOW / PRIORITY 2</b> Serious injury or illness. Evacuation may be <b>DELAYED</b> if necessary. <i>Ex: Significant trauma, unable to walk, 2<sup>o</sup> - 3<sup>o</sup> burns not more than 1-3 palm sizes.</i> <input type="checkbox"/> <b>GREEN / PRIORITY 3</b> Minor injury or illness. Non-Emergency transport <i>Ex: Sprains, strains, minor heat-related illness.</i>	
Nature of Injury or Illness & Mechanism of Injury		Brief Summary of Injury or Illness <i>(Ex: Unconscious, Struck by Falling Tree)</i>
Transport Request		Air Ambulance / Short Haul/Hoist Ground Ambulance / Other
Patient Location		Descriptive Location & Lat. / Long. (WGS84)
Incident Name		Geographic Name + "Medical" <i>(Ex: Trout Meadow Medical)</i>
On-Scene Incident Commander		Name of on-scene IC of Incident within an Incident <i>(Ex: TFLD Jones)</i>
Patient Care		Name of Care Provider <i>(Ex: EMT Smith)</i>

**3. INITIAL PATIENT ASSESSMENT:** Complete this section for each patient as applicable (start with the most severe patient)

Patient Assessment: See IRPG page 106

Treatment:

**4. TRANSPORT PLAN:**

Evacuation Location (if different): (Descriptive Location (drop point, intersection, etc.) or Lat. / Long.) Patient's ETA to Evacuation Location:

Helispot / Extraction Site Size and Hazards:

**5. ADDITIONAL RESOURCES / EQUIPMENT NEEDS:**

*Example: Paramedic/EMT, Crews, Immobilization Devices, AED, Oxygen, Trauma Bag, IV/Fluid(s), Splints, Rope rescue, Wheeled litter, HAZMAT, Extrication*

**6. COMMUNICATIONS: Identify State Air/Ground EMS Frequencies and Hospital Contacts as applicable**

Function	Channel Name/Number	Receive (RX)	Tone/NAC *	Transmit (TX)	Tone/NAC *
COMMAND					
AIR-TO-GRND					
TACTICAL					

**7. CONTINGENCY: Considerations:** If primary options fail, what actions can be implemented in conjunction with primary evacuation method? Be thinking ahead.

**8. ADDITIONAL INFORMATION:** Updates/Changes, etc.

**REMEMBER:** Confirm ETA's of resources ordered. Act according to your level of training. Be Alert. Keep Calm. Think Clearly. Act Decisively.