

Beaver Fire

ID-NCF-000552
P1NJD820 (0117)
710044

Marion Fire

ID-NCF-000508
P1EKT520 (0117)



Incident Action Plan

Friday

September 18, 2020

Operational Period 0700 - 1900

INCIDENT OBJECTIVES1. Incident Name
Beaver Fire, Marion Fire2. Date Prepared
09/17/20203. Time Prepared
2100

4. Objectives

High Value Assets and Resources to be Protected:

Public and first responder health from COVID-19; community of Powell and associated private inholdings/property; smoke sensitive communities, including Missoula and the Bitterroot valley; public and private timber lands.

Leader's Intent:

- Protect human life. Firefighter and public safety will be given the highest priority at all times.
- Minimize the exposure of the public and responders to transmission or infection from COVID-19 by following CDC, county and NPCNF measures relating to social distancing, masks and cleaning procedures.
- Establish and maintain information sharing networks with communities potentially impacted by smoke.
- Manage smoke, while providing for public safety, to provide for desirable air quality and visibility.
- Minimize fire impacts to Whitebark pine seed collection trees.
- Manage any portion of the fire located within a wilderness area using strategies and tactics that are commensurate with wilderness values.
- Take appropriate measures to reduce chances of noxious weed spread onto the forest, including weed wash of vehicles before entering the incident area and when demobilizing.
- Commit incident resources only where there is a high probability of meeting reasonable objectives or when the risk of injury or death can be mitigated.
- Maintain and foster relationships with users of public lands, landowners, agencies and local communities.
- Adhere to applicable work-rest guidelines to reduce fatigue and ensure that assigned fire-fighting personnel receive adequate rest.
- Maintain a workplace and atmosphere of mutual respect and free of any harassment. There will be no tolerance for any unethical, illegal drug or alcohol related incidents.
- Effectively manage costs commensurate with the high value assets and resources to be protected and risks..
- Efficiently demobilize resources in a manner that will ensure safe travel and "right-sizing" consistent with demobilization glidepath direction.

Operational Objectives:

The incident will be managed utilizing contain/confine and point protection strategies.

5. Prepared By (Planning Section Chief)
Will Bernard:6. Approved By (Incident Commander)
Bob Fry:

ORGANIZATION ASSIGNMENT LIST		9. Operations Section	
1. Incident Name Beaver Fire, Marion Fire		Chief-Line	Joe Brabender*, Rich Cowger (t)*
		Chief-Planning	Ron Naber*, Danny Lemer (t)*
		a. Divisions/Groups	
2. Date 09/18/20	3. Time 0700 - 1900		Beaver Fire
4. Operational Period: Day Shift		Division/Group	Alpha / Bravo Manny Mendoza*
		Division/Group	Zulu Monitored
5. Incident Commander and staff		Division/Group	Road Group Mark Zink*
Incident Commander	Bob Fry, Paul Roose (t)*	Division/Group	
Safety Officers	Marvin Carpenter, Steve Wyatt*	b. Divisions/Groups	
Information Officer	Nick Holloway (t), Max Rebholz PIOF (t)		Marion Fire
Liaison Officer	Lance Burns		
6. Agency Representatives		Division/Group	Mike Kris George*, Jacob Jeresek (t)*
Agency	Name	Division/Group	
FS Agency Admin	Brandon Knapton, Ron Tipton (t)	Division/Group	
FS Deputy Fire Staff Officer	Barry Ruklic	Division/Group	
FS AFMO	Mike Wood	Division/Group	
		Division/Group	
		c. Divisions/Groups	
7. Planning Section			
Chief	Will Bernard	Division/Group	
Resources Unit	Jody Pettit*	Division/Group	
Check In	Nolan Baldwin (t)*	Division/Group	
Demobilization Unit	Joe Read	Division/Group	
Documentation		Division/Group	
Situation Unit	Chad Ramsay*	Division/Group	
GIS Specialist	Andrew Mock	d. Air Operations Branch	
Fire Behavior	Eric Trimble*	Air Operations Branch Director	Sal Garcia (Grangeville)
FS Resource Advisor	Rebecca Lloyd *	Air Attack Supervisor	
IT Support	Ed Yeager	Air Support Supervisor	
		Helicopter Coordinator	
		Air Tanker Coordinator	
8. Logistics Section		10. Finance Section	
Chief	Tyler Rae	Chief	Dale Harrison, Jamie Porter
Facilities Unit		Time Unit Leader	
Supply Unit	Bryan Connelley	Cost Unit	Liz Behrends (t)
Ordering	Cindy Wharton	Personnel	Amy Erickson (t)
Communications Unit	Tom Robbins*	Equipment	Lisa Hawdon
Medical Unit	Teri Miller*		
Base Camp	AJ Angelo*	*Located at Powell Base Camp (v) = virtual	
Ground Support Unit		Prepared by (Resource Unit Leader) Jody Pettit	
Security Unit	Ron Babus*		

Beaver Fire Weather Forecast

Spot Forecast from the National Weather Service Missoula, MT
Forecast is based on start time of 0700 PDT on Sept 18, 2020
554 PM MDT 9/17/2020

DISCUSSION . . .

The dominant ridge of high pressure will begin to move out on Friday. Smoke will remain dense in the morning but will start to dissipate by late afternoon, ahead of a cold front passage. Expect light, southeasterly winds ahead of the front, followed by gusty southwest winds by late afternoon and evening. Rh recovery will be considerably improved on Friday night with the approaching low pressure system. Saturday will bring 100% chance of a wetting rain.

FRIDAY . . .

- * Sky/Weather.....Partly Cloudy with haze; becoming most cloudy by afternoon.
- * CWR (> 0.10 Inch)...0%.
- * LAL.....1.
- * Max Temperature.....71-76°F.
- * Min Humidity.....14-19%.
- * Wind (20 ft).....SE 5 mph becoming West 5-10 mph w/gusts to 15 mph on ridgetops by afternoon.
- * Haines Index.....5- 6 Moderate to High.

FRIDAY NIGHT . . .

- * Sky/Weather.....Cloudy/Haze. Patchy fog after sunset. Rain showers likely after midnight.
- * CWR (> 0.10 Inch)...50%.
- * LAL.....1.
- * Min Temperature.....46-51°F.
- * Max Humidity.....90-100%.
- * Wind (20 ft).....West at 5 mph becoming variable 2-5 mph after midnight.
- * Precip Amount.....0.12 inches.

SATURDAY . . .

- * Sky/Weather.....Rain Showers; slight chance of T-Storms.
- * CWR (> 0.10 Inch)...100%.
- * LAL.....1.
- * Max Temperature.....52-57°F.
- * Min Humidity.....85-90%.
- * Wind (20 ft).....Variable 2-5 mph becoming West 5-10 mph by afternoon.
- * Haines Index.....2 Very Low.
- * Precip Amount.....0.49 inches.

SATURDAY NIGHT . . .

- * Sky/Weather.....Mostly Cloudy. Rain Showers.
- * CWR (> 0.10 Inch)...60%.
- * LAL.....1.
- * Min Temperature.....41-46°F.
- * Max Humidity.....88-98%.
- * Wind (20 ft).....SW 5 mph.
- * Precip Amount.....0.06 inches.

SUNDAY.....Mostly Cloudy. Rain showers. Lows 45-50. Highs 57-62. Min RH: 45-55%. West winds to 5 mph.

MONDAY.....Mostly Clear. Lows 40-50. Highs 65-75. Diurnal Winds

TUESDAY.....Partly Cloudy. Lows 40-50. Highs 65-75. Diurnal Winds

WEDNESDAY...Partly Cloudy. Lows 40-50. Highs 65-75.

FIRE BEHAVIOR FORECAST

FORECAST NUMBER: 17

INCIDENT TYPE: Wildfire

FIRE NAME: Beaver/Marion

OPERATIONAL PERIOD: Sept 18, 2020 Friday

DATE ISSUED: Sept 17, 2020

TIME ISSUED: 1800

UNIT: ID-Clear-Nez

PREPARED BY: Eric Trimble – FBAN

INPUTS

WEATHER SUMMARY:

Sky Weather: Partly Cloudy, Smokey; becoming mostly cloudy by afternoon.

CWR (>0.10"): 0%

Max Temps: 71-76°

Min RH: 14-19% **Haines:** 5-6 (Moderate to High). **LAL:** 1

Winds (20 ft): SE 5 mph becoming West 5-10 w/gusts to 15 mph by afternoon.

FUELS:

Beaver: Mixed conifer forest dominated by DF, LPP, WL, SAF, and ES; with WRC on north aspects/valley bottoms. Mature SAF/ES conifer fuels with high crown bulk density and low crown base height. Mature DF/GF/WL/LPP conifer fuels with high crown bulk density and high crown base height. Herbaceous and live woody fuels are largely cured and will contribute to surface fire spread.

Marion: Mature, relatively open SAF and ES with dispersed pockets of regen and dead/down fuels. Mature SAF/ES conifer fuels with low to moderate crown bulk density and yet low crown base height.

Fine Fuels: 3-5%; 10-hr: 5%; 100hr: 7%; 1000hr: 11%

ERC: 85th percentile.

OUTPUTS - FIRE BEHAVIOR

GENERAL:

Terrain and fuel-driven fire. Expect active surface fire with group-tree torching and short-range spotting. Off-site smoke impacts should moderate fire behavior, particularly within the lower areas of the fire. Highest activity to occur within the mature/dense stands of spruce and sub-alpine fir, particularly above 5,500'.

Backing/flanking spread 1-2 ft/min with flames 2-4 ft. Head fire with possible 5-8 ft. flame lengths and 10-15 ft/min rates of spread with wind/slope alignment, higher with torching and short-range spotting.

Probability of Ignition (PIG): 70-80% during the peak of the burning period.

SPECIFIC:

Beaver Fire – Expect active surface fire with group-tree torching and short-range spotting, backing and flanking. Fire will continue to move uphill, and to the ENE. Depending on shading from off-site smoke a modest to significant growth in the fire perimeter is anticipated.

Marion Fire – Expect active surface fire with group-tree torching and short-range spotting, backing and flanking. Fire will continue to expand, primarily to the East. Depending on shading from off-site smoke a significant growth in the fire perimeter is anticipated.

AIR OPERATIONS: Expect poor visibility due to smoke with moderate turbulence.

SAFETY: Maintain good situational awareness as conditions remain conducive for crown fire activity.


ASSIGNMENT LIST		1. Branch		2. Division/Group		
3. Incident Name Beaver Fire		4. Operational Period Date: 09/18/20		0700 - 1900 Alpha / Bravo		
5. Operations Personnel						
Operations Chief	Joe Brabender, Rich Cowger (t)		Division/Group Supervisor	Manny Mendoza		
Branch Director			Air Support Group Supervisor	Sal Garcia		
6. Resources Assigned This Period						
Strike Team/Task Force/ Resource Designator	Last Shift	Leader	No. Pers.	Trans. Needed	Drop Off PT./Time	Pick Up PT./Time
O-31 TFLD	9/19	Chad Daugherty	1	N		
O-32 TFLD (t)	9/19	William Mack	1	N		
C-5 TY2IA Palouse	9/18	Cody Cline, Chad Borg (t)	19	N		
E-44 ENG6 Peanut Pie	9/18	Sam Elkins	3	N		
E-45 ENG6 Firebrand	9/25	Lauren Bendel	2	N		
E-71 ENG6 Torch Fire	9/28	Donavun Davis	3	N	R & R 9/18	
O-16 HEQB	9/18	Robbie Easley	1	N		
O-33 HEQB (t)	9/18	Andrew Brown	1	N		
O-2.04 SOF2	9/21	Steve Wyatt	1	N		
E-39 AMBU AMR NW	9/30	Hardesty, Bryan	2	N		
7. Control Operations						
Task: Scout and establish containment lines to the West of the fire. Purpose: Prevent fire from impacting private property to the West and North of the fire. End State: Fire did not reach private property to the West and North of the fire.						
8. Special Instructions						
LCES shall be in place prior to engaging fire. All COVID-19 mitigation protocols shall be followed.						
9. Division/Group Communication Summary						
Function	Frequency - RX	Frequency - TX	Tone	Channel	Comments	
TAC 6	168.0500 N	168.0500 N	136.5	6		
A/G	167.1250 N	167.1250 N		15		
CMD 1	170.0000 N	166.6750 N	136.5	1		
CMD 2	170.6875 N	166.5750 N	136.5	2		
Prepared by (RESL) Jody Pettit		Approved by (PSC2) Will Bernard		Date 09/17/20	Time 2000	

AIR OPERATIONS SUMMARY (ICS 220)

1. Incident Name: Beaver ID-NCF-000552 Marion ID-NCF-000508	2. Operational Period: Date From: Sept. 18, 2020 Date To: Sept. 18, 2020 Time From: 0730 Time To: 2000	3. Sunrise: 0628 Sunset: 1847				
4. Remarks (safety notes, hazards, air operations special equipment, etc.): * Aviation requirement will be reviewed and applied where needed Consider the safety and risk analysis while planning and ordering A/C * A/C availability will be shared as needed, unless assigned to the specific incident * A/C Available & assigned to the Powell - order through comm						
5. Ready Alert Aircraft: Medivac: 1HQ Short Haul Helicopter New Incident: Two Bear Air-(Hoist @						
7. Personnel:		8. Frequencies:				
Name:	Phone Number:	AM	FM			
Air Operations Branch Director	Sal Garcia 760 310-0138		127.0750 A-10			
Air Support Group Supervisor	N/A	Air/Air Fixed-Wing				
Air Tactical Group Supervisor	Sharing with Forest	Air/Air Rotary-Wing - Flight Following	167.1250 A-9			
Helicopter Coordinator		Air/Ground	Other Fixed-Wing Aircraft:			
Helibase Manager	Connie Sticker 503 348-4581	Command	Seats - T-822 @ GIC & T-835 @ GIC			
		Deck Coordinator	Refer to the Aviation Map for Helispot info - Lat / Long, specific			
		Take-Off & Landing Coordinator	Water dipping sites on the map w/lat & Long			
		Air Guard				
10. Helicopters (use additional sheets as necessary):						
FAA N#	Category/Kind/Type	Make/Model	Base	Available	Start	Remarks
Assigned to	BEAVER INC.					
H-16920	T2	Bell 212	Powell	Available Local	0800	
H-974H	T3	Bell 407	For Planning	Available Local	0800	Order through dispatch
HB-116	T1	Kaman Aero K-1200	Located at	Available local	0800	Order through dispatch
HG-562AJ	T1	CH-47D	Grangeville - Airport	Available Local	0800	Standard
11. Prepared by: Name: Sal Garcia						
Position/Title: AOBDD Signature: _____						
Date/Time: 9/17/2020 - 1800						

AIR OPERATIONS SUMMARY (ICS 220)

1. Incident Name: Beaver ID-NCF-000552 Marion ID-NCF-000508	2. Operational Period: Date From: Sept. 18, 2020 Time From: 0730 Date To: Sept. 18, 2020 Time To: 2000	3. Sunrise: 0628 Sunset: 1847	
12. Task/Mission/Assignment (category/kind/type and function includes: air tactical, reconnaissance, personnel transport, search and rescue, etc.):			
Category/Kind/Type and Function	Name of Personnel or Cargo (if applicable) or Instructions for Tactical Aircraft	Mission Start	Fly From Fly To
	A/C request will be assigned as needed with Ops and Divisions approval. Helicopter N16920, Bell 212 is assigned to the Beaver Inc.	0800	
	Refer to the Aviation Map, for specific location, marking and lat / long for respective sites and spots.		
	Additional A/C's are available at Missoula, Montana Airbase if needed		
	Additional A/C's are assigned at Grangeville airport -		
	To contact AOBD, contact Powell Communication and they will forward the message to me.		
	N16920 Will be used to support Beaver with cargo loads, bucket dropping and necessary recons, as needed		
	Type I helicopter on order for 1100 (9/17/2020) Fire, contact Div A on A/G Comm - contact Div A / M prior to launching of Helicopter -		
11. Prepared by: Name: <u>Sal Garcia</u> Position/Title: <u>AOBD</u> Signature: _____ ICS 220, Page 2 Date/Time: <u>9/17/2020 - 1800</u>			

INCIDENT RADIO COMMUNICATIONS PLAN		Incident Name BEAVER FIRE (DAY SHIFT)				Date/Time Prepared 9/17/2020 1000		Operational Period Date/Time 9/18/2020 0700 – 9/18/2020 1900	
Ch #	Function	Channel Name	Assignment	RX Freq N or W	RX Tone	TX Freq N or W	Tx Tone	Mode	Remarks
1	Repeater	Command 1	All Resources	170.0000 N	136.5	166.6750 N	136.5	A	To Communications
2	Repeater	Command 2	All Resources	170.6875 N	136.5	166.5750 N	136.5	A	To Communications
3									
4									
5									
6	Tactical	TAC 6	DIV A/B Day	168.0500 N	136.5	168.0500 N	136.5	A	NIFC Tac
7	Tactical	TAC 7	DIV A/B Night	168.2000 N	136.5	168.2000 N	136.5	A	NIFC Tac
8	Tactical	TAC 8	DIV Z	168.6000 N	136.5	168.6000 N	136.5	A	NIFC Tac
9	Tactical	Tac 9	DIV M	166.7250 N	136.5	166.7250 N	136.5	A	NIFC Tac
10	Tactical	TAC 10	Roads	166.7750 N	136.5	166.7750 N	136.5	A	NIFC Tac
11	Tactical	Tac 11	Logging	168.2500 N	136.5	168.2500 N	136.5	A	NIFC Tac
12	Local	E Beaver Ridge	I/A	171.5750 N		166.2625 N	100.0	A	NFS Repeater
13	Local	N Rocky Ridge	I/A	171.5750 N		166.2625 N	162.2	A	NFS Repeater
14									
15	Air/Ground	A/G Primary	All	167.1250 N		167.1250 N		A	NIFC A/G Primary
16	Air Guard	Air Guard	All	168.6250 N		168.6250 N	110.9	A	Emergency
Prepared By (Communications Unit)		Thomas Robbins COME 				Incident Location		Powell ID	

The convention calls for frequency lists to show four digits after the decimal place, followed by either an "N" or a "W", depending on whether the frequency is narrow or wide band. Mode refers to either "A" or "D" indicating analog or digital (e.g. Project 25) or "M" indicating mixed mode. All channels are shown as if programmed in a control station, mobile or portable radio. Repeater and base stations must be programmed with the Rx and Tx reversed.

INCIDENT RADIO COMMUNICATIONS PLAN		Incident Name BEAVER FIRE (NIGHT SHIFT)			Date/Time Prepared 9/17/2020 1000		Operational Period Date/Time 9/18/2020 1900 – 9/19/2020 0700		
Ch #	Function	Channel Name	Assignment	RX Freq N or W	RX Tone	TX Freq N or W	TX Tone	Mode	Remarks
1									
2									
3									
4									
5									
6	Tactical	TAC 6	DIV A/B Day	168.0500 N	136.5	168.0500 N	136.5	A	NIFC Tac
7	Tactical	TAC 7	DIV A/B Night	168.2000 N	136.5	168.2000 N	136.5	A	NIFC Tac
8	Tactical	TAC 8	DIV Z	168.6000 N	136.5	168.6000 N	136.5	A	NIFC Tac
9	Tactical	Tac 9	DIV M	166.7250 N	136.5	166.7250 N	136.5	A	NIFC Tac
10	Tactical	TAC 10	Roads	166.7750 N	136.5	166.7750 N	136.5	A	NIFC Tac
11	Tactical	Tac 11	Logging	168.2500 N	136.5	168.2500 N	136.5	A	NIFC Tac
12	Local	E Beaver Ridge	I/A	171.5750 N		166.2625 N	100.0	A	TO COMMUNICATIONS
13	Local	N Rocky Ridge	I/A	171.5750 N		166.2625 N	162.2	A	TO COMMUNICATIONS
14									
15	Air/Ground	A/G Primary	All	167.1250 N		167.1250 N		A	NIFC A/G Primary
16	Air Guard	Air Guard	All	168.6250 N		168.6250 N	110.9	A	Emergency
Prepared By (Communications Unit) Thomas Robbins COML <i>Thomas Robbins</i>				Incident Location Powell ID					

The convention calls for frequency lists to show four digits after the decimal place, followed by either an "N" or a "W", depending on whether the frequency is narrow or wide band. Mode refers to either "A" or "D" indicating analog or digital (e.g. Project 25) or "I/J" indicating mixed mode. All channels are shown as if programmed in a control station, mobile or portable radio. Repeater and base stations must be programmed with the Rx and Tx reversed.

HEALTH AND SAFETY MESSAGE:

SAFETY starts with **YOU**

INCIDENTS:
Beaver and Marion Fires

DATE: September 18, 2020

TIME: 0700 to 1900

Keep Your Guard Up!

- Maintaining situational awareness takes effort!
- Continue planning to provide your safety, and *then* accomplish the mission!
- Watch for complacency in yourself and others, and help them stay sharp.
- Watch for signs of fatigue, and take action to address it.
- Be methodical and relentless in your efforts to get the job done safely!
- YOU are the value at risk!!!

Keep your head in the game, there is still fire on the hill



Your perception is your reality, but does your "reality" match what is actually happening around you?

Quote for the day: It is not over till it's over

**Your Safety team,
Marvin Carpenter, Steve Wyatt
and
Each of YOU!**

MEDICAL PLAN (ICS 206 WF)

1. Incident/ project name and address:						2. Operational Period: Date/Time							
Beaver Powell Idaho						9-18-20 0700-1900							
3. Ambulance Services													
<i>Name</i>				<i>Complete address</i>				<i>Phone & EMS Frequency</i>		<i>ALS</i> ✓			
Missoula Ambulance Service INC				2600 Palmer St Missoula, MT 59808				406-549-2325		X			
Powell QRU				Powell Ranger Station				911					
AMR Ambulance				Division A				Command					
4. Air Ambulance Services													
<i>Name</i>			<i>Location/remarks</i>			<i>Phone & EMS Frequency</i>		<i>ALS</i> ✓	<i>hoist</i> ✓	<i>night</i> ✓			
Life Flight Network			Missoula, MT/Sand Point, ID/Butte			911 406-829-7070		X		X			
Alert Air Ambulance			Kalispell, MT			911 406-752-5111		X		X			
Two Bear Air			Whitefish, MT			911 406-297-2121			X	X			
5. Hospitals													
<i>Name and Address</i>				<i>Phone</i>		<i>Level of care</i>	<i>Heli Pad</i> ✓	<i>If Helipad, Lat./Long. (DD mm.mmm') Datum WGS84</i>			<i>Travel time to hosp: min's</i> <i>Air Ground</i>		
Eastern Idaho Regional Medical Center 3100 Channing Way Idaho Falls, ID 83404				208-529-6111		Trauma II Burn center	X	N 43 28' 17" W 111 59' 29.5"			285		
St. Patrick Hospital 500 Broadway Missoula, MT				406-543-7271		Trauma II	X	N 46 52.524 W113 59.969			68		
Community Medical Center 2827 Ft. Missoula Rd Missoula, MT				406-728-4100		Trauma III	X	N 46 50.909 W 114 02.865			64		
6. Area Location Capability													
<i>Branch, Div, Group</i>		<i>Aid Station Name; Responders</i>			<i>Equipment available</i>	<i>Emergency frequency</i>	<i>Ambulance ETA to site: min's</i> <i>Air Ground</i>		<i>Nearby Helispot &/or DP</i>	<i>Helispot &/or DP lat/long (DD mm.mmm') Datum WGS 84</i>			
Powell Ranger Station		MEDL/EMPF Teri Miller EMPF Alyse Gutierrez			ALS								
Powell FOB/spike		Rosemary Myers			AEMT								
Division A		AMR AMBULANCE Carlos Hardesty Joyce Bryan			EMTF EMPF								
7. Notes, special procedures: Use Medical Incident Report for medical response and Medical Incident Pre-Planning worksheet for briefing. Medical Emergencies should be reported in accordance with Lolo/Kootenai Forest procedures.													
8. Prepared by (Medical Unit Leader)				9. Date/Time				10. Reviewed by (Safety Officer)				11. Date/Time	
Teri Miller				9/17/20 1700				Steve Wyatt				9/17/20 1700	

ICS-206 COVID-19 PLAN	1. Incident Name Beaver Fire	2. Date Prepared 9-17-20	3. Time Prepared	4. Operational Period
---------------------------------	--	------------------------------------	------------------	-----------------------

INCIDENT MEDICAL AID STATIONS

MEDICAL AID STATION	LOCATION	ISOLATION?	
		YES	NO
Covid precheck in screening	Base camp/spike		X
Daily screening-road check	Powell Ranger Station	X	
Daily self checks	ICP		X

LOCAL SUPPORT

A. OFF-SITE ISOLATION FACILITIES

NAME	LOCATION	PHONE	MEDICAL	
			YES	NO
Hotels in Missoula, MT	Contact SWZ COVID logistics	406-540-2965		X

COVID SCREENING PROCEDURES

ICP		medical	
		ALS	BLS
BASE CAMP SPIKE	Covid precheck screening prior to checking in to fire Daily covid self check screening for all modules		X
MEDICAL UNIT-Powell Ranger Stations	Daily covid screening prior to briefing Cold/warm/hot medical units present (on site isolation present)	X	

TESTING FACILITIES

NAME	ADDRESS	Apointment required		Phone	Days operation		Hours operation	
		Yes	No		Work day	Week end	WD	WE
Community Medical Center Rapid tes outpatient lab	2827 Fort Missoula rd Missoula MT	X		406-327-4378	M-F	Sat	0630 1730	0830 1330
Missoula City-county Health depart	4025 flynn lane Missoula MT	X		406-258-4770	M-F	NA	0900 1600	NA NA
Clearwater Valley Hospital Orfino, ID	301 Cedar ST Orfino, Id		X	hospital 208-476-4555 Lab 208-476-8035	M-F	Sat	0900 1700	0900 1700

COVID-19 PROCEDURES

Field Screenings-self check screening. Postive Symptoms? Isolate patient, notify MEDL follow instuctions given.

First aid station Screening. Postive symtoms? Isolate patient Notify MEDL, follow instructions

Notes: Isolation can take place in a vehicle short term or at Medical unit. Vehicle to be completely disinfected afterward before use. MEDL can assist contractors with Information. Expectations that Module of 1 concepts will be followed. See list of Covid expectations given to all resources upon checkin and follow. Nearest/reccomended testing is at Community Medical Center rapid 2 hour results.

Prepared by medical unit leader
Teri Miller 406-544-3070

Reviewed by saftey officer
Steve Wyatt

ASSIGNMENT-SPECIFIC MEDICAL EMERGENCY ACTION PLAN

Pre-Planning for today's assignment

What are the likely hazards that could cause injuries? What kind of severe injuries?		
Who is the likely in-charge DIVS or overhead for an emergency in your assigned area today? (i.e. "Division Zulu")		
Who are the Medical personnel assigned to your part of the incident? What are their capabilities?		
Other Emergency Responders: fire dept., crash rescue, ambulance?		
Communications: Command channel, Air to Ground, Medical helicopters, local rescue/medical?		
Transportation methods available	Ground vehicle, drop point, coordinates, travel route?	
	Aircraft I.D, Helispot names, coordinates? Hoist capable, internal transport	
	Other available methods - contingency	
Most likely workforce for evacuation		

Response checklist

Who takes charge?

- DIVS or designated Overhead manages the overall scene and evacuation process.
- Medical personnel and emergency responders manage patients and assist in rescue/extrication.
- OPS and IC make command decisions so the emergency can be given full attention and management. They continue to manage ongoing incident operations.

Response sequence:

- First, secure the scene and protect responders and patients from further injury. Render first aid.
- Clear the Command channel for "Emergency Traffic only" if this is a critical emergency. If not, inform Communications of non-critical-emergency status and use normal communications.
- Contact closest Medical personnel and DIVS or designated Overhead for response.

Information for Communications: Medical Incident Report – See last page of IAP and IRPG pages 116 and 119.

Helicopter Extraction Operations: See IRPG pages 116 and 117.

Severe Weather: In the event of forecasted severe weather, implement Incident Severe Weather Plan.

Incident Within Incident: Upon arriving at the incident, all overhead should obtain and review the team's Incident Within Incident Plan.

Information Message

“A picture is worth a thousand words”

1. **Public Information is seeking photos and videos** for Inciweb, social media, and other information products. Photos and videos draw attention and help tell the story of the fire. The photos and videos that we have obtained from personnel in the field have gotten a lot of traction on social media.

We are looking for anything of interest that could be related to the Beaver (or Marion) Fire. Photos that show the hard work being done on the fire will really help the public understand what the team is doing and the need for this effort. Crews working, equipment, and air operations, mixed in with photos of the fire itself really work well.

How to get your photos to Information:

- a. Transfer photos and videos to whomever attends the 0700 Operational Period Briefing so they can provide them directly to the PIO at the meeting.
- b. Email them to 2020.beaver@firenet.gov or give to someone with internet access to send.

Please include any relevant information that may help put the photo in context.

2. A **Lost and Found** box is located inside the Supply Unit yurt.
3. People wishing to send **mail** should drop it off within the Supply Unit yurt.

BEAVER FIRE - MARION FIRE

Telephone List

Last Edited: 09/17 @ 2010

IC	BOB FRY	406-431-0102
IC (T)	PAUL ROOSE	406-640-1337
LIAISON	LANCE BURNS	218-464-8465
INFORMATION	NICK HOLLOWAY	406-370-9381
INFORMATION PIOF (T)	MAX REBHOLZ	406-880-8090
OPERATIONS PLANNING	RON NABER	406-640-1614
OPERATIONS - LINE	JOE BRABENDER	406-691-0369
OPERATIONS - LINE (T)	RICH COWGER	406-780-1317
SAFETY	MARVIN CARPENTER	406-594-5728
SAFETY	STEVE WYATT	406-437-8386
PLANNING	WILL BERNARD	919-619-1408
RESOURCES	JODY PETTIT	208-290-8840
DEMOBILIZATION	JOE READ	406-253-1130
CHECK IN (T)	NOLAN BALDWIN	406-396-0074
SITUATIONS	CHAD RAMSAY	208-290-2253
COMPUTER HELP	ED YEAGER	818-360-2519
PLANS OFFICE - POWELL		208-942-3123
		208-942-3133
READ	REBBECA LLOYD	406-830-0998
FINANCE	DALE HARRISON	715-499-1457
FINANCE	JAMIE PORTER	406-830-5220
COMP/CLAIMS (T)	AMY ERICKSON	406-207-3516
LOGISTICS	TYLER RAE	406-425-1038
BASE CAMP MGR	AJ ANGELO	406-544-3715
ORDERING	CINDY WHARTON	423-341-1243
COMMUNICATIONS	TOM ROBBINS	406-698-7500
MEDICAL	TERI MILLER	406-544-3070
SECURITY	RON BABUS	570-269-7741

TENTATIVE RELEASE

09/18/2020

CREWS

C-7 0900 (HC2) LAVA RIVER DEMOB POWELL

OVERHEAD

O-2.47 0800 ERHARDT, WILLIAM DEMOB LOLO

O-24 1600 GOODMAN, ALICIA DEMOB LOLO

O-2.48 2100 WHARTON, CYNTHIA DEMOB LOLO

EQUIPMENT

E-50 0900 EXCA COX DEMOB POWELL

E-83 1000 PROC HESTER DEMOB POWELL

E-66 1100 EXCA MADDEN DEMOB POWELL

E-53 1200 LOADER COX DEMOB POWELL

E-72 1200 WTS1 HIGH SIERRA DEMOB LOLO

E-81 1300 LOADER HESTER DEMOB POWELL

E-49 1400 EXCA FLASH EXCA DEMOB POWELL

E-38 1500 FWR HESTER DEMOB POWELL

9/19/20

C-5 1000 (HC2I) PALOUSE CREW DEMOB POWELL

O-57 1100 MODULE - AVERY DEMOB POWELL

E-44 0800 ENG6 PEANUT PIE DEMOB LOLO

O-33 0830 HEQB BROWN DEMOB POWELL

O-16 0900 HEQB EASLY DEMOB POWELL
9/20/20

O-3 1800 ROSEMARY MYERS DEMOB LOLO

O-39 1800 AMBU AMR UP FOR REASSIGNMENT

Finance Message

Video conferencing will be available daily at 0800 and 2000 at the Powell Ranger Station located in the covered parking in the cache (sheltered briefing area).

Finance is located in Lolo, MT and if you are traveling west, you will not have an opportunity to work with Finance in person during demob.

Please do not wait until demob to address your questions or issues about your time.

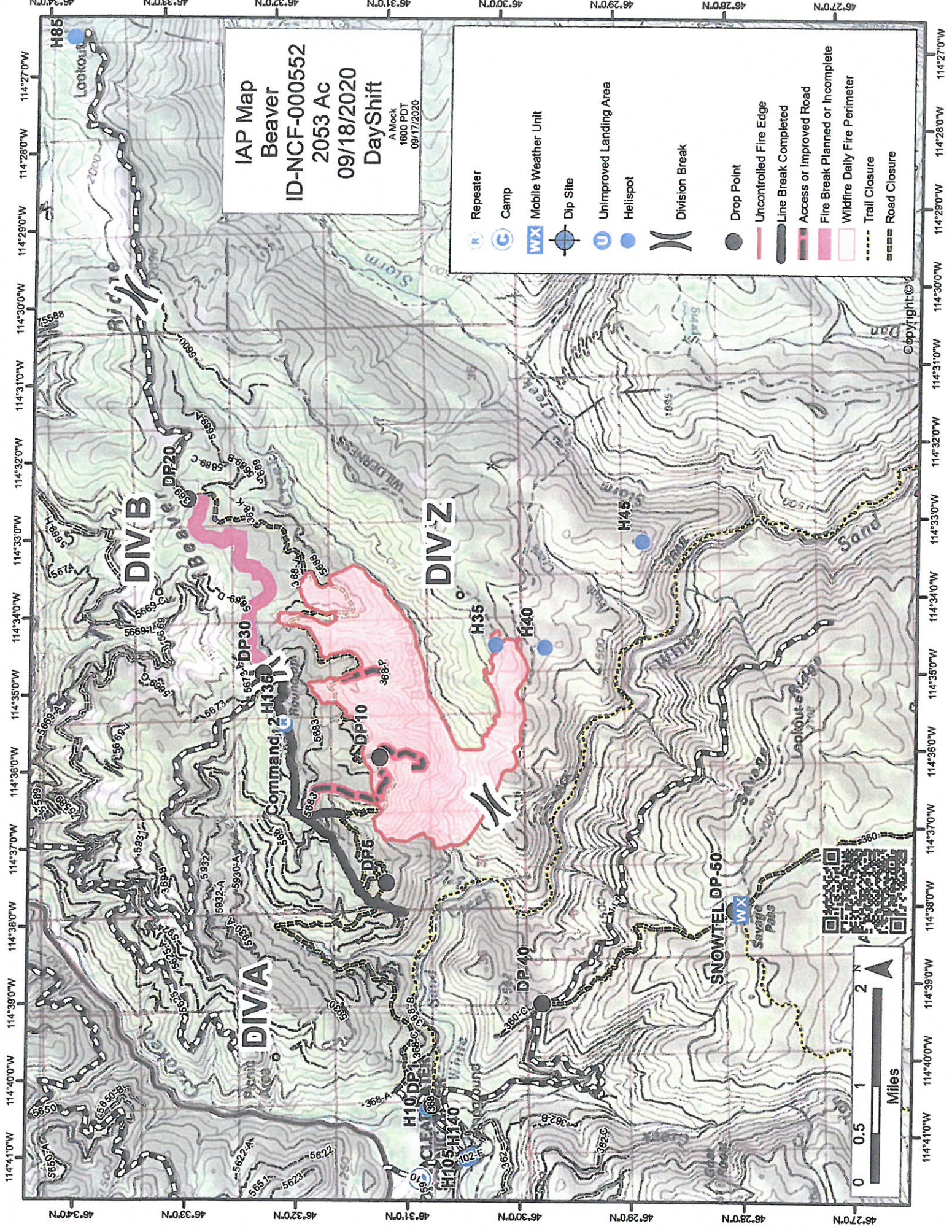
If you'd like a draft of your invoice or timesheet, please write your LEGIBLE email address on the bottom of your shift ticket/CTR.

Most common issues that impact demob:

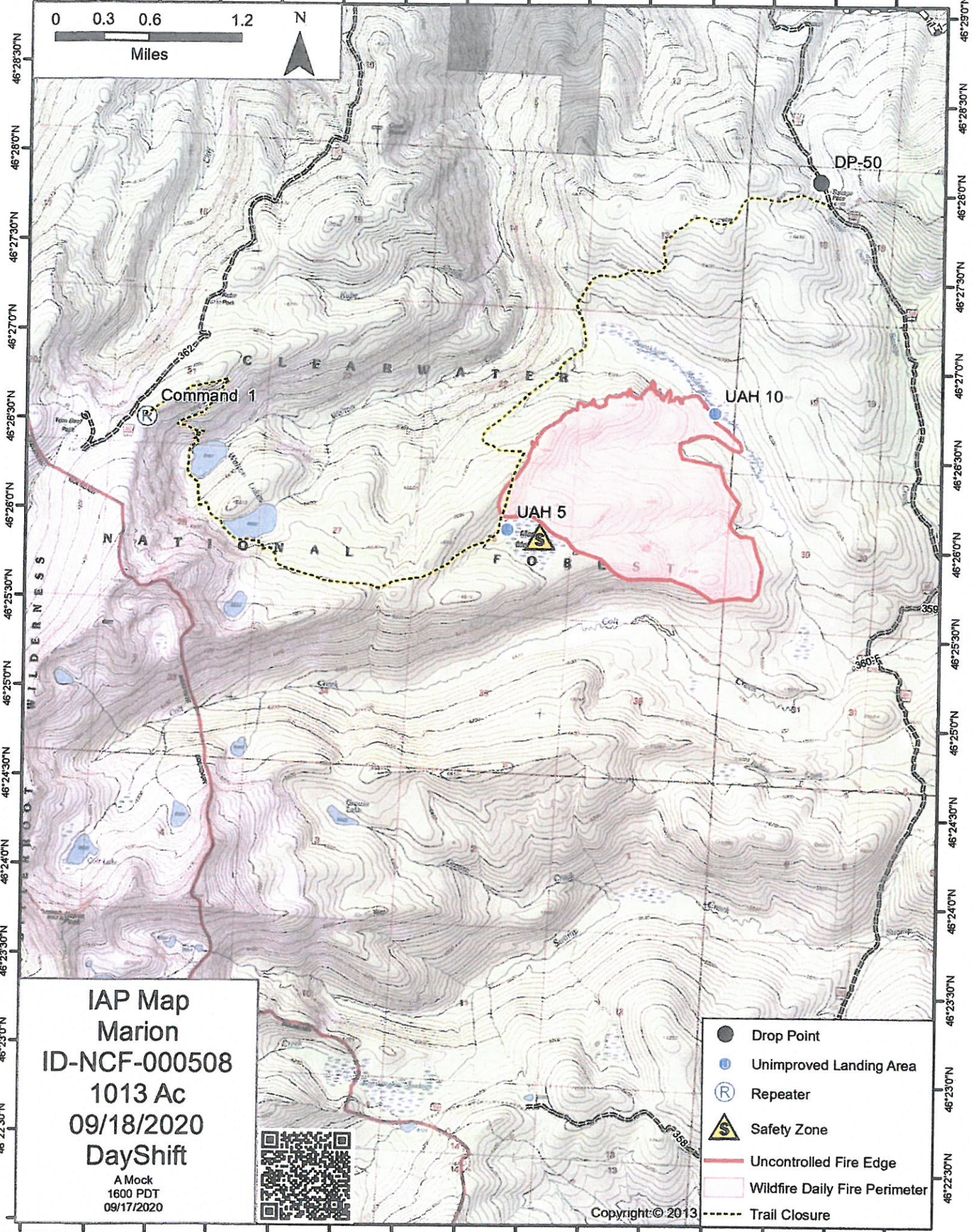
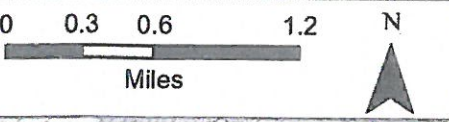
1. No date/incorrect dates on shift tickets/CTRs
2. No meal breaks or no justification provided for missed meal breaks
3. Names of all operators/drivers of equipment and transports on shift tickets
4. Tracking mileage on equipment that has mileage-based rates
5. Ensure VINs on shift tickets match the equipment
6. Ensure shift tickets and CTRs have all required signatures

IAP Map
 Beaver
 ID-NCF-000552
 2053 Ac
 09/18/2020
 DayShift
 A Mock
 1600 PDT
 09/17/2020

	Repeater
	Camp
	Mobile Weather Unit
	Dip Site
	Unimproved Landing Area
	Helispot
	Division Break
	Drop Point
	Uncontrolled Fire Edge
	Line Break Completed
	Access or Improved Road
	Fire Break Planned or Incomplete
	Wildfire Daily Fire Perimeter
	Trail Closure
	Road Closure



114°44'30"W 114°44'0"W 114°43'30"W 114°43'0"W 114°42'30"W 114°42'0"W 114°41'30"W 114°41'0"W 114°40'30"W 114°40'0"W 114°39'30"W 114°39'0"W 114°38'30"W 114°38'0"W 114°37'30"W



IAP Map
Marion
ID-NCF-000508
1013 Ac
09/18/2020
DayShift

A Mock
1600 PDT
09/17/2020



- Drop Point
- Unimproved Landing Area
- Repeater
- Safety Zone
- Uncontrolled Fire Edge
- Wildfire Daily Fire Perimeter
- Trail Closure

Copyright © 2013

114°44'0"W 114°43'30"W 114°43'0"W 114°42'30"W 114°42'0"W 114°41'30"W 114°41'0"W 114°40'30"W 114°40'0"W 114°39'30"W 114°39'0"W 114°38'30"W 114°38'0"W 114°37'30"W 114°37'0"W

MEDICAL PLAN (ICS 206 WF)

Controlled Unclassified Information//Basic

Medical Incident Report

FOR A NON-EMERGENCY INCIDENT, WORK THROUGH CHAIN OF COMMAND TO REPORT AND TRANSPORT INJURED PERSONNEL AS NECESSARY.

FOR A MEDICAL EMERGENCY: IDENTIFY ON SCENE INCIDENT COMMANDER BY NAME AND POSITION AND ANNOUNCE "MEDICAL EMERGENCY" TO INITIATE RESPONSE FROM IMT COMMUNICATIONS/DISPATCH.

Use the following items to communicate situation to communications/dispatch.

1. CONTACT COMMUNICATIONS / DISPATCH (Verify correct frequency prior to starting report)

Ex: "Communications, Div. Alpha. Stand-by for Emergency Traffic."

2. INCIDENT STATUS: Provide incident summary (including number of patients) and command structure.

Ex: "Communications, I have a Red priority patient, unconscious, struck by a falling tree. Requesting air ambulance to Forest Road 1 at (Lat./Long.) This will be the Trout Meadow Medical, IC is TFLD Jones. EMT Smith is providing medical care."

Severity of Emergency / Transport Priority	<input type="checkbox"/> RED / PRIORITY 1 Life or limb threatening injury or illness. Evacuation need is IMMEDIATE <i>Ex: Unconscious, difficulty breathing, bleeding severely, 2° – 3° burns more than 4 palm sizes, heat stroke, disoriented.</i> <input type="checkbox"/> YELLOW / PRIORITY 2 Serious Injury or illness. Evacuation may be DELAYED if necessary. <i>Ex: Significant trauma, unable to walk, 2° – 3° burns not more than 1-3 palm sizes.</i> <input type="checkbox"/> GREEN / PRIORITY 3 Minor Injury or illness. Non-Emergency transport <i>Ex: Sprains, strains, minor heat-related illness.</i>	
Nature of Injury or Illness & Mechanism of Injury		<i>Brief Summary of Injury or Illness (Ex: Unconscious, Struck by Falling Tree)</i>
Transport Request		<i>Air Ambulance / Short Haul/Hoist Ground Ambulance / Other</i>
Patient Location		<i>Descriptive Location & Lat. / Long. (WGS84)</i>
Incident Name		<i>Geographic Name + "Medical" (Ex: Trout Meadow Medical)</i>
On-Scene Incident Commander		<i>Name of on-scene IC of Incident within an Incident (Ex: TFLD Jones)</i>
Patient Care		<i>Name of Care Provider (Ex: EMT Smith)</i>

3. INITIAL PATIENT ASSESSMENT: Complete this section for each patient as applicable (start with the most severe patient)

Patient Assessment: See IRPG page 106

Treatment:

4. TRANSPORT PLAN:

Evacuation Location (if different): (Descriptive Location (drop point, intersection, etc.) or Lat. / Long.) Patient's ETA to Evacuation Location:

Helispot / Extraction Site Size and Hazards:

5. ADDITIONAL RESOURCES / EQUIPMENT NEEDS:

Example: Paramedic/EMT, Crews, Immobilization Devices, AED, Oxygen, Trauma Bag, IV/Fluid(s), Splints, Rope rescue, Wheeled litter, HAZMAT, Extrication

6. COMMUNICATIONS: Identify State Air/Ground EMS Frequencies and Hospital Contacts as applicable

Function	Channel Name/Number	Receive (RX)	Tone/NAC *	Transmit (TX)	Tone/NAC *
COMMAND					
AIR-TO-GRND					
TACTICAL					

7. CONTINGENCY: Considerations: If primary options fail, what actions can be implemented in conjunction with primary evacuation method? Be thinking ahead.

8. ADDITIONAL INFORMATION: Updates/Changes, etc.

REMEMBER: Confirm ETA's of resources ordered. Act according to your level of training. Be Alert. Keep Calm. Think Clearly. Act Decisively.