

# Beaver Fire

ID-NCF-000552  
P1NJD820 (0117)  
710044

# Marion Fire

ID-NCF-000508  
P1EKT520 (0117)



## Incident Action Plan

Sunday

September 13, 2020

Day Operational Period 0700 - 1900

Night Operational Period 1800 - 0800

# INCIDENT OBJECTIVES

1. Incident Name  
Beaver Fire, Marion Fire

2. Date Prepared  
09/12/2020

3. Time Prepared  
2100

## 4. Objectives

### High Value Assets and Resources to be Protected:

Public and first responder health from COVID-19; community of Powell and associated private inholdings/property; smoke sensitive communities, including Missoula and the Bitterroot valley; public and private timber lands.

### Leader's Intent:

- Protect human life. Firefighter and public safety will be given the highest priority at all times.
- Minimize the exposure of the public and responders to transmission or infection from COVID-19 by following CDC, county and NPCNF measures relating to social distancing, masks and cleaning procedures.
- Establish and maintain information sharing networks with communities potentially impacted by smoke.
- Manage smoke, while providing for public safety, to provide for desirable air quality and visibility.
- Minimize fire impacts to Whitebark pine seed collection trees.
- Manage any portion of the fire located within a wilderness area using strategies and tactics that are commensurate with wilderness values.
- Take appropriate measures to reduce chances of noxious weed spread onto the forest, including weed wash of vehicles before entering the incident area and when demobilizing.
- Commit incident resources only where there is a high probability of meeting reasonable objectives or when the risk of injury or death can be mitigated.
- Maintain and foster relationships with users of public lands, landowners, agencies and local communities.
- Adhere to applicable work-rest guidelines to reduce fatigue and ensure that assigned fire-fighting personnel receive adequate rest.
- Maintain a workplace and atmosphere of mutual respect and free of any harassment. There will be no tolerance for any unethical, illegal drug or alcohol related incidents.
- Effectively manage costs commensurate with the high value assets and resources to be protected and risks..
- Efficiently demobilize resources in a manner that will ensure safe travel and "right-sizing" consistent with demobilization glidepath direction.

### Operational Objectives:

The incident will be managed utilizing contain/confine and point protection strategies.

5. Prepared By (Planning Section Chief)  
Will Bernard:



6. Approved By (Incident Commander)  
Bob Fry:



ORGANIZATION ASSIGNMENT LIST		9. Operations Section		
1. Incident Name  Beaver Fire, Marion Fire		Chief-Line	Joe Brabender*, Rich Cowger (t)*	
		Chief-Planning	Ron Naber*,	
		<b>a. Divisions/Groups</b>		
2. Date 09/12/20	3. Time Day: 0700 - 1900 Night: 1800 - 0800		<b>Beaver Fire</b>	
4. Operational Period: Day Shift / Night Shift		Division/Group	Alpha / Bravo Day	Manny Mendoza*, Jeff Barnes (t)*
		Division/Group	Alpha / Bravo Night	Danny Lemer*
<b>5. Incident Commander and staff</b>		Division/Group	Zulu	Monitored
Incident Commander	Bob Fry, Paul Roose (t)*	Group	Road Group	Mark Zink*
Deputy IC	Jay Winfield*	Division/Group		
Safety Officers	Marvin Carpenter, Steve Wyatt*, Dean Whitney (t)*	<b>b. Divisions/Groups</b>		
Information Officer	Penny Bertram, Nick Holloway (t), Jill Cobb (v), Paula Short (v)		<b>Marion Fire</b>	
Liaison Officer	Lance Burns, Chris Grove*			
<b>6. Agency Representatives</b>		Division/Group	Mike	Kris George*, Jacob Jeresek (t)*
Agency	Name	Division/Group		
FS Agency Admin	Brandon Knapton, Ron Tipton (t)	Division/Group		
FS Deputy Fire Staff Officer	Barry Ruklic	Division/Group		
FS AFMO	Michael Wood	Division/Group		
		Division/Group		
		<b>c. Divisions/Groups</b>		
<b>7. Planning Section</b>				
Chief	Will Bernard	Division/Group		
Resources Unit	Jody Pettit*	Division/Group		
Check In	Nolan Baldwin (t)*	Division/Group		
Demobilization Unit	Joe Read	Division/Group		
Documentation	Danny Baggao	Division/Group		
Situation Unit	Chad Ramsay*	Division/Group		
GIS Specialist	Andrew Mock	<b>d. Air Operations Branch</b>		
Fire Behavior	Eric Trimble*	Air Operations Branch Director	Sal Garcia (Grangeville)	
FS Resource Advisor	Rebecca Lloyd *	Air Attack Supervisor		
IT Support	Ed Yeager	Air Support Supervisor		
		Helicopter Coordinator		
		Air Tanker Coordinator		
<b>8. Logistics Section</b>		<b>10. Finance Section</b>		
Chief	Tyler Rae	Chief	Dale Harrison, Jamie Porter,	
Facilities Unit		Time Unit Leader		
Supply Unit	Bryan Connelley	Cost Unit	Liz Behrends (t)	
Ordering	Cindy Wharton	Personnel	Amy Erickson (t)	
Communications Unit	Tom Robbins*	Equipment	Lisa Hawdon	
Medical Unit	Teri Miller*			
Base Camp	Ian Garthwait*	*Located at Powell Base Camp (v) = virtual		
Ground Support Unit		Prepared by (Resource Unit Leader) Jody Pettit		
Security Unit				

## Beaver Fire Weather Forecast

Spot Forecast from the National Weather Service Missoula, MT  
Forecast is based on start time of 0700 PDT on Sept 13, 2020  
622 PM MDT 9/12/2020

### DISCUSSION . . .

Warm and very dry weather conditions will persist through Sunday. Winds will be light and slope driven. A significant amount of smoke is moving into central Idaho from fires to the west. On Monday, slightly cooler air will arrive from the west. This will bring slightly higher wind and humidity but it's a shallow push thus keeping the Haines Index of 5 for Monday. This change will signal the beginning of decreasing drift smoke for the area as well. Cooler weather will arrive Tuesday with the Haines decreasing to 3.

### SUNDAY . . .

- \* Sky/Weather.....Sunny/Smokey.
- \* CWR (> 0.10 Inch)...0%.
- \* LAL.....1.
- \* Max Temperature.....80-83°F.
- \* Min Humidity.....14-18%.
- \* Wind (20 ft).....SE 5 mph becoming SW 5-9 mph.
- \* Haines Index.....5 moderate.

### SUNDAY NIGHT . . .

- \* Sky/Weather.....Clear.
- \* CWR (> 0.10 Inch)...0 percent.
- \* LAL.....1.
- \* Min Temperature.....50-55°F.
- \* Max Humidity.....35-40%.
- \* Wind (20 ft).....South 5-6 mph.

### MONDAY . . .

- \* Sky/Weather.....Partly Cloudy.
- \* CWR (> 0.10 Inch)...0%.
- \* LAL.....1.
- \* Max Temperature.....75-80°F.
- \* Min Humidity.....18-23%.
- \* Wind (20 ft).....South 5 mph becoming SW 8-10 mph w/gusts to 15 mph by afternoon.
- \* Haines Index.....5 moderate.

### MONDAY NIGHT . . .

- \* Sky/Weather.....Mostly Cloudy.
- \* CWR (> 0.10 Inch)...10%.
- \* LAL.....1.
- \* Min Temperature.....45-50°F.
- \* Max Humidity.....45-50%.
- \* Wind (20 ft).....West to NW 5-10 mph.

**TUESDAY**...Mostly Cloudy. Chance of rain. Lows 45-50. Highs 70-75. Min RH: 10-25%. West winds to 10 mph.

**WEDNESDAY**...Partly Cloudy, Chance of rain. Lows 45-55. Highs 70-75. SE winds to 10 mph.

**THURSDAY**...Partly Cloudy. Chance of rain/T-Storms. Lows 45-55. Highs 75-85. East winds to 10 mph

**FRIDAY**...Partly Cloudy, Slight chance of rain. Lows 45-55. Highs 65-75.

## FIRE BEHAVIOR FORECAST

**FORECAST NUMBER:** 12

**INCIDENT TYPE:** Wildfire

**FIRE NAME:** Beaver/Marion

**OPERATIONAL PERIOD:** Sept 13, 2020 Sunday

**DATE ISSUED:** Sept 12, 2020

**TIME ISSUED:** 1800

**UNIT:** ID-Clear-Nez

**PREPARED BY:** Eric Trimble – FBAN

### INPUTS

#### **WEATHER SUMMARY:**

**Sky Weather:** Sunny/Smokey.

**CWR (>0.10"): 0%**

**Max Temps:** 80-83°

**Min RH:** 14-18% **Haines:** 5 (moderate). **LAL:** 1

**Winds (20 ft):** SE 5 mph becoming SW 5-9 mph by afternoon.

#### **FUELS:**

**Beaver:** Mixed conifer forest dominated by DF, LPP, WL, SAF, and ES; with WRC on north aspects/valley bottoms. Mature SAF/ES conifer fuels with high crown bulk density and low crown base height. Mature DF/GF/WL/LPP conifer fuels with high crown bulk density and high crown base height. Herbaceous and live woody fuels are partially cured and will contribute to surface fire spread.

**Marion:** Mature, relatively open SAF and ES with dispersed pockets of regen and dead/down fuels. Mature SAF/ES conifer fuels with low to moderate crown bulk density and yet low crown base height.

**Fine Fuels:** 3-5%; 10-hr: 5%; 100hr: 10%; 1000hr: 12%

**ERC:** 80<sup>th</sup> percentile and trending up.

### OUTPUTS - FIRE BEHAVIOR

#### **GENERAL:**

Terrain and fuel-driven fire. Expect active surface fire activity with group-tree torching and short-range spotting. Off-site smoke impacts will moderate fire behavior considerably. Nevertheless, highest activity to occur within the mature/dense stands of spruce and sub-alpine fir. Red alder fuels and young conifer plantations will generally discourage large fire growth.

Backing/flanking spread 1-2 ft/min with flames 2-4 ft. Head fire with possible 5-8 ft. flame lengths and 10-15 ft/min rates of spread with wind/slope alignment, higher with torching and short-range spotting.

**Probability of Ignition (PIG): 70-80%** during the peak of the burning period.

#### **SPECIFIC:**

**Beaver Fire** – Expect active surface fire with group-tree torching and short-range spotting, backing and flanking. Fire will continue to move uphill, and to the NE. High probability for the fire to run up to the 5683 Road, below Roundtop LO. Depending on the amount of smoke received a modest growth in the fire perimeter is anticipated.

**Marion Fire** – Expect active surface fire with group-tree torching and short-range spotting, backing and flanking. Fire will continue to move to the SW and ESE.

**AIR OPERATIONS:** Expect poor visibility due to smoke with light turbulence.

**SAFETY:** Maintain good situational awareness as conditions remain conducive for crown fire activity.

ASSIGNMENT LIST			1. Branch		2. Division/Group	
3. Incident Name <b>Beaver Fire</b>			4. Operational Period Date: 09/13/20		Day 0700 - 1900 Night 1800 - 0800	
5. Operations Personnel						
Operations Chief	Joe Brabender, Rich Cowger (t)		Division/Group Supervisor		Manny Mendoza, Jeff Barnes (t)	
Branch Director			Air Support Group Supervisor		Sal Garcia	
6. Resources Assigned This Period						
Strike Team/Task Force/ Resource Designator	Last Shift	Leader	No. Pers.	Trans. Needed	Drop Off PT./Time	Pick Up PT./Time
O-12 TFLD	9/17	Jacob Cafferty	1	N		
O-15 TFLD (t)	9/17	Clint Dean	1	N		
C-5 TY2IA Palouse	9/18	Cody Cline, Chad Borg (t)	19	N		
C-7 HC2 Lava Forestry	9/26			N		
E-44 ENG6 Peanut Pie	9/19	Sam Elkins	3	N		
E-71 ENG6 Torch Fire	9/21	Donavan Davis	3	N		
O-17 Timber Specialist	9/14	Jake Jararczeski	1	N		
O-18 Timber Specialist	9/14	Ray Craig	1	N		
O-16 HEQB	9/17	Robbie Easley	1	N		
O-33 HEQB (t)	9/18	Andrew Brown	1	N		
E-50 EXCA2 Cox	9/20	Marvin Gregg	2	N		
E-55 MAST Downing	9/19	Wes Renne	2	N		
E-56 FEL1 Downing	9/19	Aaron Downing	2	N		
E-57 FEL1 Welch Brothers	9/19	Jim Bonnalie	2	N		
E-59 SKD1 Welch Brothers	9/19	Craig Welch	2	N		
E-64 SKD1 Bonnalie	9/19	Clint Mader	1	N		
E-65 SKD1 Bonnalie	9/19	Jim Bonnalie	1	N		
O-2.04 SOF2	9/21	Steve Wyatt	1	N		
O-2.05 SOF2 (t)	9/13	Dean Whitney	1	N		
E-39 AMBU AMR NW	9/17	Patterson, Amback	2	N		
7. Control Operations						
<b>Task:</b> Scouting and establishing containment lines to the West of the fire. <b>Purpose:</b> Prevent fire from impacting private property to the West and North of the fire. <b>End State:</b> Fire has not reached private property to the West and North of the fire.						
8. Special Instructions						
Coordinate with Beaver Ridge Lookout for fire activity information. LCES shall be in place prior to engaging fire. All COVID-19 mitigation protocols shall be followed. Identify potential medivac locations.						
9. Division/Group Communication Summary						
Function	Frequency - RX	Frequency - TX	Tone	Channel	Comments	
TAC 6	168.0500 N	168.0500 N	136.5	6		
TAC 11 (Logging)	168.2500 N	168.2500N	136.5	11		
A/G	167.1250 N	167.1250 N		15		
CMD 1	170.0000 N	166.6750 N	136.5	1		
CMD 2	170.6875 N	166.5750 N	136.5	2		
Prepared by (RESL) Jody Pettit		Approved by (PSC2) Will Bernard		Date 09/12/20	Time 2000	

ASSIGNMENT LIST		1. Branch	2. Division/Group			
			Alpha / Bravo Night			
3. Incident Name		4. Operational Period		Day 0700 - 1900		
Beaver Fire		Date: 09/13-14/20		Night 1800 - 0800		
5. Operations Personnel						
Operations Chief	Joe Brabender, Rich Cowger (t)		Division/Group Supervisor		Danny Lemer	
Branch Director			Air Support Group Supervisor		Sal Garcia	
6. Resources Assigned This Period						
Strike Team/Task Force/ Resource Designator	Last Shift	Leader	No. Pers.	Trans. Needed	Drop Off PT./Time	Pick Up PT./Time
O-31 TFLD	9/18	Chad Daugherty	1	N		
O-32 TFLD(t)	9/19	William Mack	1	N		
E-45 ENG6 Firebrand	9/19	Lauren Bendel	3	N		
O-27 HEQB (t)	9/18	Andrew Saralecos	1	N		
E-38 FORW Hester	9/19	Joe Hester	1	N		
E-80 Log Processor	9/2	Matt Scott	2	N		
E-83 Log Processor	9/2	Jeremy Hester	2	N		
E-40 Log Truck Anderson	9/19	Brett Flodin	1	N		
E-41 Log Truck Anderson	9/19	Kelly Glessner	1	N		
E-42 Log Truck Anderson	9/19	Casey Nelson	1	N		
E-63 Log Truck Nez Tribe	9/20	Jeremy Littlefield	1	N		
E-77 Log Truck Hester	9/22	Dan Maple	1	N		
E-78 Log Truck Cox	9/23	Stewart Wilson	1	N		
E-49 ECXA2 Flash Excavating	9/20	Gordon Eckel	2	N		
E-66 EXCA2 Madden	9/20	Pat Madden	2	N		
E-53 Log Loader Cox	9/19	Rick Cox	2	N		
O-35 SOFR	9/19	Dennis Crawford	1	N		
O-11 EMTF	9/17	Jessica Tullus	1	N		
O-22 EMTF	9/19	Alyse Gutierrez	1	N		
7. Control Operations						
<p><b>Task:</b> Move log decks to DP1. Monitor fire.</p> <p><b>Purpose:</b> Complete the fuel break. Ensure safety of log trucks and fire fighters.</p> <p><b>End State:</b> Log decks have been moved to DP1. Everyone is safe.</p>						
8. Special Instructions						
<p>Coordinate with Beaver Ridge Lookout for fire activity information.</p> <p>LCES shall be in place prior to engaging fire.</p> <p>All COVID-19 mitigation protocols shall be followed.</p> <p>Identify potential medivac locations.</p>						
9. Division/Group Communication Summary						
Function	Frequency - RX	Frequency - TX	Tone	Channel	Comments	
TAC 7	168.2000 N	168.2000 N	136.5	7		
TAC 11 (Logging)	168.2500 N	168.2500N	136.5	11		
A/G	167.1250 N	167.1250 N		15		
CMD 1	170.0000 N	166.6750 N	136.5	1		
CMD 2	170.6875 N	166.5750 N	136.5	2		
Prepared by (RESL)		Approved by (PSC2)		Date		Time
Jody Pettit		Will Bernard		09/12/20		2000



ASSIGNMENT LIST		1. Branch	2. Division/Group			
			Road Group			
3. Incident Name		4. Operational Period		Day 0700 - 1900		
Beaver Fire		Date: 09/13/20		Night 1800 - 0800		
5. Operations Personnel						
Operations Chief	Joe Brabender, Rich Cowger (t)		Group Leader		O-38 Mark Zink	
Branch Director			Air Support Group Supervisor		Sal Garcia	
6. Resources Assigned This Period						
Strike Team/Task Force/ Resource Designator	Last Shift	Leader	No. Pers.	Trans. Needed	Drop Off PT./Time	Pick Up PT./Time
E-69 GRDR Madden	9/20	Moses Madden	1	N		
E-46 WTS2 SmithH20	9/25	Levi Stone	1	N		
E-74 WTS2 DZS Contracting	9/21	Casey Smith	1	N		
E-72 WTS1 High Sierra	9/21	Dale Iseman	2	N		
7. Control Operations						
<b>Task:</b> Spot blade 111 Rd. from bridge to Mile 5. <b>Purpose:</b> Smooth road surface to enhance driving safety. <b>End State:</b> Road is safe to travel.						
8. Special Instructions						
Call out mile marker # on radio, TAC 11 Coordinate with Beaver Ridge Lookout for fire activity information. LCES shall be in place prior to engaging fire. All COVID-19 mitigation protocols shall be followed. Identify potential medivac locations.						
9. Division/Group Communication Summary						
Function	Frequency - RX	Frequency - TX	Tone	Channel	Comments	
TAC 10 (Roads)	166.7750 N	166.7750 N	136.5	10		
TAC 11 (Logging)	168.2500 N	168.2500N	136.5	11		
A/G	167.1250 N	167.1250 N		15		
CMD 1	170.0000 N	166.6750 N	136.5	1		
CMD 2	170.6875 N	166.5750 N	136.5	2		
Prepared by (RESL)		Approved by (PSC2)		Date		Time
Jody Pettit		Will Bernard		09/12/20		2000

ASSIGNMENT LIST		1. Branch		2. Division/Group		
3. Incident Name		Marion Fire		4. Operational Period Date: 09/13/20		
				Day 0700 - 1900 Night 1800 - 0800		
5. Operations Personnel						
Operations Chief	Joe Brabender, Rich Cowger (t)		Division/Group Supervisor	Kris George, Jacob Jeresek (t)		
Branch Director			Air Support Group Supervisor	Sal Garcia		
6. Resources Assigned This Period						
Strike Team/Task Force/ Resource Designator	Last Shift	Leader	No. Pers.	Trans. Needed	Drop Off PT./Time	Pick Up PT./Time
		Monitored				
7. Control Operations						
<b>Task:</b> Provide for firefighter and public safety. Keep fire West of Sneak Foot Meadows and South of Salvage Pass Trail. <b>Purpose:</b> Minimize fire spread toward values at risk. Minimize smoke production to the community of Missoula. <b>End State:</b> The fire is in monitor status.						
8. Special Instructions						
Monitor for and extinguish any new spots East of Sneak Foot Meadows and North of Savage Pass Trail. Remain available for IA within response area. Coordinate with Beaver Ridge Lookout for fire activity information. LCES shall be in place prior to engaging fire. All COVID-19 mitigation protocols shall be followed. Identify potential medivac locations.						
9. Division/Group Communication Summary						
Function	Frequency - RX	Frequency - TX	Tone	Channel	Comments	
TAC 9	166.7250 N	166.7250 N	136.5	9		
A/G	167.1250 N	167.1250 N		15		
CMD 1	170.0000 N	166.6750 N	136.5	1		
CMD 2	170.6875 N	166.5750 N	136.5	2		
Prepared by (RESL) Jody Pettit		Approved by (PSC2) Will Bernard		Date 09/12/20	Time 2000	


# AIR OPERATIONS SUMMARY (ICS 220)

<b>1. Incident Name:</b> Beaver ID-NCF-000552 Marion ID-NCF-000508	<b>2. Operational Period:</b> Date From: Sept. 13, 2020      Date To: Sept. 13, 2020 Time From: 0730                      Time To: 2000	<b>3. Sunrise:</b> <b>Sunset:</b> 0622                                      1857	
<b>4. Remarks</b> (safety notes, hazards, air operations special equipment, etc.): * Aviation requirement will be reviewed and applied where needed Consider the safety and risk analysis while planning and ordering A/C * A/C availability will be shared as needed, unless assigned to the specific Incident * A/C Available & assigned to the Powell - order through comm		<b>5. Ready Alert Aircraft:</b> Medivac: 1HQ Short Haul Helicopter New Incident: Two Bear Air-(Hoist @	
<b>7. Personnel:</b> <b>Name:</b> <b>Phone Number:</b> Air Operations Branch              Sal Garcia                      760 310-0138 Director Air Support Group Supervisor      N/A Air Tactical Group Supervisor      Sharing with Forest Helicopter Coordinator Helibase Manager                      Connie Stickel                      503 348-4581		<b>8. Frequencies:</b> AM                      FM Air/Air Fixed-Wing Air/Air Rotary-Wing – Flight Following              127.0750 A-10 Air/Ground                              167.1250 A-9 Command                              Refer to the Comm Deck Coordinator                      Plan Take-Off & Landing Coordinator Air Guard                              168.6250	
<b>9. Fixed-Wing</b> (category/kind/type, make/model, N#, base): Air Tactical Group Supervisor Aircraft: A/C avail. at Grangeville Airport / Helibase Air Attack - primary AA-117 (N44NC) AA-200KQ @ GIC Other Fixed-Wing Aircraft: Seats - T-822 @ GIC & T-835 @ GIC Refer to the Aviation Map for Helispot info - Lat / Long, specific Water dipping sites on the map w/lat & Long			
<b>10. Helicopters</b> (use additional sheets as necessary):			
FAA N#	Category/Kind/Type	Make/Model	Base
Assigned to	BEAVER INC.		Available
H-16920	T2	Bell 212	Powell Available Local 0800
H-974H	T3	Bell 407	For Planning Available Local 0800
HB-116	T1	Kaman Aero K-1200	Located at Available local 0800
HG-562AJ	T1	CH-47D	Grangeville - Airport Available Local 0800
<b>11. Prepared by:</b> Name: <u>Sal Garcia</u> Position/Title: <u>AOBD</u> Signature: _____ Date/Time: <u>9/12/2020 - 1900</u>			

# AIR OPERATIONS SUMMARY (ICS 220)

<b>1. Incident Name:</b> Beaver ID-NCF-000552 Marion ID-NCF-000508	<b>2. Operational Period:</b> Date From: Sept. 13, 2020      Date To: Sept. 13, 2020 Time From: 0730                      Time To: 2000	<b>3. Sunrise:</b> 0622	<b>Sunset:</b> 1857
<b>12. Task/Mission/Assignment</b> (category/kind/type and function includes: air tactical, reconnaissance, personnel transport, search and rescue, etc.):			
Category/Kind/Type and Function	Name of Personnel or Cargo (if applicable) or Instructions for Tactical Aircraft	Mission Start	Fly From      Fly To
	A/C request will be assigned as needed with Ops and Divisions approval. Helicopter N16920, Bell 212 is assigned to the Beaver Inc.	0800	
	Refer to the Aviation Map, for specific location, marking and lat / long for respective sites and spots.		
	Additional A/C's are available at Missoula, Montana Airbase if needed		
	Additional A/C's are assigned at Grangeville airport -		
	To contact AOBD, contact Powell Communication and they will forward the message to me.		
	Ordered 1 AA to assist with the operation		
	Scheduled Recon:		
	2 - Heavy Airtankers to be used to secure and enforce the line		
	Comm - contact Div A / M prior to launching of Airtanker -		
	Type I helicopter on order for 1100 (9/13/2020) Fire, contact Div A on A/G		
	Comm - contact Div A / M prior to launching of Helicopter -		
	N16920 Type II, available for bucket operations when needed		

**11. Prepared by:** Name: Sal Garcia      Position/Title: AOBD      Signature: \_\_\_\_\_  
 ICS 220, Page 2      Date/Time: 9/12/2020 - 1900

INCIDENT RADIO COMMUNICATIONS PLAN		Incident Name BEAVER FIRE			Date/Time Prepared 9/12/2020 1500		Operational Period Date/Time 9/13/2020 0700 – 9/14/2020 0700				
Ch #	Function	Channel Name	Assignment	RX Freq N or W	RX Tone	TX Freq N or W	Tx Tone	Mode	Remarks		
1	Repeater	Command 1	All Resources	170.0000 N	136.5	166.6750 N	136.5	A	To Communications		
2	Repeater	Command 2	All Resources	170.6875 N	136.5	166.5750 N	136.5	A	To Communications		
3											
4											
5											
6	Tactical	TAC 6	DIV A	168.0500 N	136.5	168.0500 N	136.5	A	NIFC Tac		
7	Tactical	TAC 7	DIV B	168.2000 N	136.5	168.2000 N	136.5	A	NIFC Tac		
8	Tactical	TAC 8	DIV Z	168.6000 N	136.5	168.6000 N	136.5	A	NIFC Tac		
9	Tactical	Tac 9	DIV M	166.7250 N	136.5	166.7250 N	136.5	A	NIFC Tac		
10	Tactical	TAC 10	Roads	166.7750 N	136.5	166.7750 N	136.5	A	NIFC Tac		
11	Tactical	Tac 11	Logging	168.2500 N	136.5	168.2500 N	136.5	A	NIFC Tac		
12	Local	E Beaver Ridge	I/A	171.5750 N		166.2625 N	100.0	A	NFS Repeater		
13	Local	N Rocky Ridge	I/A	171.5750 N		166.2625 N	162.2	A	NFS Repeater		
14											
15	Air/Ground	A/G Primary	All	167.1250 N		167.1250 N		A	NIFC A/G Primary		
16	Air Guard	Air Guard	All	168.6250 N		168.6250 N	110.9	A	<b>Emergency</b>		
Prepared By (Communications Unit) Thomas Robbins COML 				Incident Location Powell ID							

The convention calls for frequency lists to show four digits after the decimal place, followed by either an "N" or a "W", depending on whether the frequency is narrow or wide band. Mode refers to either "A" or "D" indicating analog or digital (e.g. Project 25) or "M" indicating mixed mode. All channels are shown as if programmed in a control station, mobile or portable radio. Repeater and base stations must be programmed with the Rx and Tx reversed.

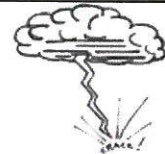
**Incident:**  
Beaver Fire and Marion Fire

**Date:**  
September 13, 2020

**Shift: Day**  
0700 - 1900



**SAFETY MESSAGE**  
**SAFETY IS OUR FIRST PRIORITY**  
*Fire fighter and public safety comes first on every fire, every time*



**DEMOB**

DRIVE SAFELY

HEADLIGHTS ON

SEATBELTS UTILIZED

FOLLOW THE POSTED SPEED

DO NOT DRIVE WHILE SLEEPY

DO NOT TEXT OR USE PHONE WHILE DRIVING

TAKE BREAKS, FOLLOW 10 HOUR/16 HOUR LIMITS

PRACTICE MODULE OF ONE DURING YOUR TRAVELS TO YOUR HOME BASE..

**ARRIVE BACK HOME SAFELY!!! Your loved ones are waiting for you.**

You have seen them on every lonely stretch of highway. You know what it represents, **Death.**

But have you really, really thought about it.

I wonder if they had their seat belts on. A lot of highway deaths are a result of no seat belt usage. Were they driving to fast for the road conditions? Was the driver on a cellphone or distracted in some other manner? Did they try to pass on a solid yellow line? If so, they lost. Was this a site of some gruesome, bloody mess, I think so? But who were they. A family perhaps, a mom, a dad, and the kids. Maybe a daughter with all her brides' maids on their way to the church for that special day. Maybe it was a squad of firefighters on their way home after an assignment.

Who knows, does it matter?

Does it really, really matter?

**YES, YES it does!**

and **YOU** matter!

We hope you mitigate your risks while driving. You know what they are, seat belts and headlights on. Slow down, drive defensively, take breaks, no distractions - you know the drill. Please implement it.

**You are important to many family and friends back home and to this Team.**

Do not become a little white cross on some lonely stretch of highway!!!

**Your Safety Team.... Marvin Carpenter, Steve Wyatt,  
Dennis Crawford, Dean Whitney (T),  
and Each of YOU.**



## MEDICAL PLAN (ICS 206 WF)

<b>1. Incident/ project name and address:</b>						<b>2. Operational Period: Date/Time</b>						
Beaver Powell Idaho						9-13-20 0700-1900						
<b>3. Ambulance Services</b>												
<b>Name</b>			<b>Complete address</b>						<b>Phone &amp; EMS Frequency</b>		<b>ALS</b> ✓	
Missoula Ambulance Service INC			2600 Palmer St Missoula, MT 59808						406-549-2325		X	
Powell QRU			Powell Ranger Station						911			
AMR Ambulance			Division A						Command			
<b>4. Air Ambulance Services</b>												
<b>Name</b>			<b>Location/remarks</b>				<b>Phone &amp; EMS Frequency</b>		<b>ALS</b> ✓	<b>hoist</b> ✓	<b>night</b> ✓	
Life Flight Network			Missoula, MT/Sand Point, ID/Butte				911 406-829-7070		X		X	
Alert Air Ambulance			Kalispell, MT				911 406-752-5111		X		X	
Two Bear Air			Whitefish, MT				911 406-297-2121			X	X	
<b>5. Hospitals</b>												
<b>Name and Address</b>				<b>Phone</b>		<b>Level of care</b>	<b>Heli Pad</b> ✓	<b>If Helipad, Lat./Long. (DD mm.mmm') Datum WGS84</b>			<b>Travel time to hosp: min's</b> Air      Ground	
Eastern Idaho Regional Medical Center 3100 Channing Way Idaho Falls, ID 83404				208-529-6111		Trauma II Burn center	X	N 43 28' 17" W 111 59' 29.5"				
St. Patrick Hospital 500 Broadway Missoula, MT				406-543-7271		Trauma II	X	N 46 52.524 W113 59.969			68	
Community Medical Center 2827 Ft. Missoula Rd Missoula, MT				406-728-4100		Trauma III	X	N 46 50.909 W 114 02.865			64	
<b>6. Area Location Capability</b>												
<b>Branch, Div, Group</b>		<b>Aid Station Name; Responders</b>			<b>Equipment available</b>	<b>Emergency frequency</b>	<b>Ambulance ETA to site: min's</b> Air      Ground		<b>Nearby Helispot &amp;/or DP</b>	<b>Helispot &amp;/or DP lat/long (DD mm.mmm') Datum WGS 84</b>		
Powell Ranger Station		MEDL/EMPF Teri Miller			ALS							
Division A/B NIGHT		Jessica Tullis Alyse Gutierrez			EMTF EMPF							
Powell FOB/spike		Rosemary Myers			AEMT							
Division A		Jerry Patterson 509-999-0457 Josh Amback 509-688-7593			EMPF EMTF							
<b>7. Notes, special procedures:</b> Use Medical Incident Report for medical response and Medical Incident Pre-Planning worksheet for briefing. Medical Emergencies should be reported in accordance with Lolo/Kootenai Forest procedures.												
<b>8. Prepared by (Medical Unit Leader)</b>				<b>9. Date/Time</b>				<b>10. Reviewed by (Safety Officer)</b>				<b>11. Date/Time</b>
Teri Miller				9/12/20 1700				Marvin Carpenter				9/12/20 1700

ICS-206 <b>COVID-19 PLAN</b>	1. Incident Name <b>Beaver Fire</b>	2. Date Prepared <b>9-12-20</b>	3. Time Prepared	4. Operational Period
---------------------------------	--	------------------------------------	------------------	-----------------------

**INCIDENT MEDICAL AID STATIONS**

MEDICAL AID STATION	LOCATION	ISOLATION?	
		YES	NO
Covid precheck in screening	Base camp/spike		X
Daily screening-road check	Powell Ranger Station	X	
Daily self checks	ICP		X

**LOCAL SUPPORT**

**A. OFF-SITE ISOLATION FACILITIES**

NAME	LOCATION	PHONE	MEDICAL	
			YES	NO
Hotels in Missoula, MT	Contact SWZ COVID logistics	406-540-2965		X

**COVID SCREENING PROCEDURES**

ICP		medical	
		ALS	BLS
<b>BASE CAMP SPIKE</b>	Covid precheck screening prior to checking in to fire Daily covid self check screening for all modules		X
<b>MEDICAL UNIT-Powell Ranger Stations</b>	Daily covid screening prior to briefing Cold/warm/hot medical units present (on site isolation present)	X	

**TESTING FACILITIES**

NAME	ADDRESS	Apointment required		Phone	Days operation		Hours operation	
		Yes	No		Work day	Week end	WD	WE
Community Medical Center Rapid tes outpatient lab	2827 Fort Missoula rd Missoula MT	X		406-327-4378	M-F	Sat	0630 1730	0830 1330
Missoula City-county Health depart	4025 flynn lane Missoula MT	X		406-258-4770	M-F	NA	0900 1600	NA
Clearwater Valley Hospital Orfino, ID	301 Cedar ST Orfino, Id		X	hospital 208-476-4555 Lab 208-476-8035	M-F	Sat	0900 1700	0900 1700

**COVID-19 PROCEDURES**

**Field Screenings-self check screening.** Postive Symptoms? Isolate patient, notify MEDL follow instuctions given.

**First aid station Screening.** Postive symtoms? Isolate patient Notify MEDL, follow instructions

Notes: Isolation can take place in a vehicle short term or at Medical unit. Vehicle to be completely disinfected afterward before use. MEDL can assist contractors with Information. Expectations that Module of 1 concepts will be followed. See list of Covid expectations given to all resources upon checkin and follow. Nearest/reccomended testing is at Community Medical Center rapid 2 hour results.

Prepared by medical unit leader  
**Teri Miller 406-544-3070**

Reviewed by saftey officer  
**Steve Wyatt**

## ASSIGNMENT-SPECIFIC MEDICAL EMERGENCY ACTION PLAN

### Pre-Planning for today's assignment

What are the likely hazards that could cause injuries? What kind of severe injuries?		
Who is the likely in-charge DIVS or overhead for an emergency in your assigned area today? (i.e. "Division Zulu")		
Who are the Medical personnel assigned to your part of the incident? What are their capabilities?		
Other Emergency Responders: fire dept., crash rescue, ambulance?		
Communications: Command channel, Air to Ground, Medical helicopters, local rescue/medical?		
Transportation methods available	Ground vehicle, drop point, coordinates, travel route?	
	Aircraft I.D, Helispot names, coordinates? Hoist capable, internal transport	
	Other available methods - contingency	
Most likely workforce for evacuation		

### Response checklist

#### **Who takes charge?**

- DIVS or designated Overhead manages the overall scene and evacuation process.
- Medical personnel and emergency responders manage patients and assist in rescue/extrication.
- OPS and IC make command decisions so the emergency can be given full attention and management. They continue to manage ongoing incident operations.

#### **Response sequence:**

- First, secure the scene and protect responders and patients from further injury. Render first aid.
- Clear the Command channel for "Emergency Traffic only" if this is a critical emergency. If not, inform Communications of non-critical-emergency status and use normal communications.
- Contact closest Medical personnel and DIVS or designated Overhead for response.

**Information for Communications:** Medical Incident Report – See last page of IAP and IRPG pages 118 and 119.

**Helicopter Extractions Operations:** See IRPG pages 116 and 117.

**Severe Weather:** In the event of forecasted severe weather, implement Incident Severe Weather Plan.

**Incident Within Incident:** Upon arriving at the incident, all overhead should obtain and review the team's Incident Within Incident Plan.

# Information Message

**“A picture is worth a thousand words”**

1. **Public Information is seeking photos and videos** for Inciweb, social media, and other information products. Photos and videos draw attention and help tell the story of the fire. The photos and videos that we have obtained from personnel in the field have gotten a lot of traction on social media.

We are looking for anything of interest that could be related to the Beaver (or Marion) Fire. Photos that show the hard work being done on the fire will really help the public understand what the team is doing and the need for this effort. Crews working, equipment, and air operations, mixed in with photos of the fire itself really work well.

How to get your photos to Information:

- a. Transfer photos and videos to whomever attends the 0700 Operational Period Briefing so they can provide them directly to the PIO at the meeting.
- b. Email them to [2020.beaver@firenet.gov](mailto:2020.beaver@firenet.gov) or give to someone with internet access to send.

Please include any relevant information that may help put the photo in context.

2. A **Lost and Found** box is located inside the Supply Unit yurt.
3. People wishing to send **mail** should drop it off within the Supply Unit yurt.

# BEAVER FIRE - MARION FIRE

## Telephone List

Last Edited: 09/12 @ 1950

IC	BOB FRY	406-431-0102
DEPUTY IC	JAY WINFIELD	208-993-0768
IC (T)	PAUL ROOSE	406-640-1337
LIAISON	CHRIS GROVE	406-381-7600
INFORMATION	PENNY BERTRAM	406-239-3970
OPERATIONS PLANNING	RON NABER	406-640-1614
OPERATIONS PLANNING (T)	DANNY LEMER	406-250-1280
OPERATIONS - LINE	JOE BRABENDER	406-691-0369
OPERATIONS - LINE (T)	RICH COWGER	406-780-1317
SAFETY	MARVIN CARPENTER	406-594-5728
SAFETY	STEVE WYATT	406-437-8386
SAFETY (T)	DEAN WHITNEY	208-755-5956
PLANNING	WILL BERNARD	919-619-1408
RESOURCES	JODY PETTIT	208-290-8840
DEMOBILIZATION	JOE READ	406-253-1130
CHECK IN (T)	NOLAN BALDWIN	406-396-0074
DOCUMENTATION	DAN BAGGAO	575-910-7179
SITUATION	CHAD RAMSAY	208-290-2253
ITSS	ED YEAGER	818-360-2519
PLANS OFFICE - POWELL		208-942-3123
		208-942-3133
READ	REBECCA LLOYD	406-830-0998
FINANCE	DALE HARRISON	715-499-1457
FINANCE	JAMIE PORTER	406-830-5220
COMP/CLAIMS (T)	AMY ERICKSON	406-207-3516
LOGISTICS	TYLER RAE	406-425-1038
BASE CAMP MGR (T)	IAN GARTHWAIT	207-272-5020
ORDERING	CINDY WHARTON	423-341-1243
COMMUNICATIONS	TOM ROBBINS	406-698-7500
COMMUNICATIONS	BOB PEARSON	949-874-0586
MEDICAL	TERI MILLER	406-544-3070

## Finance Message

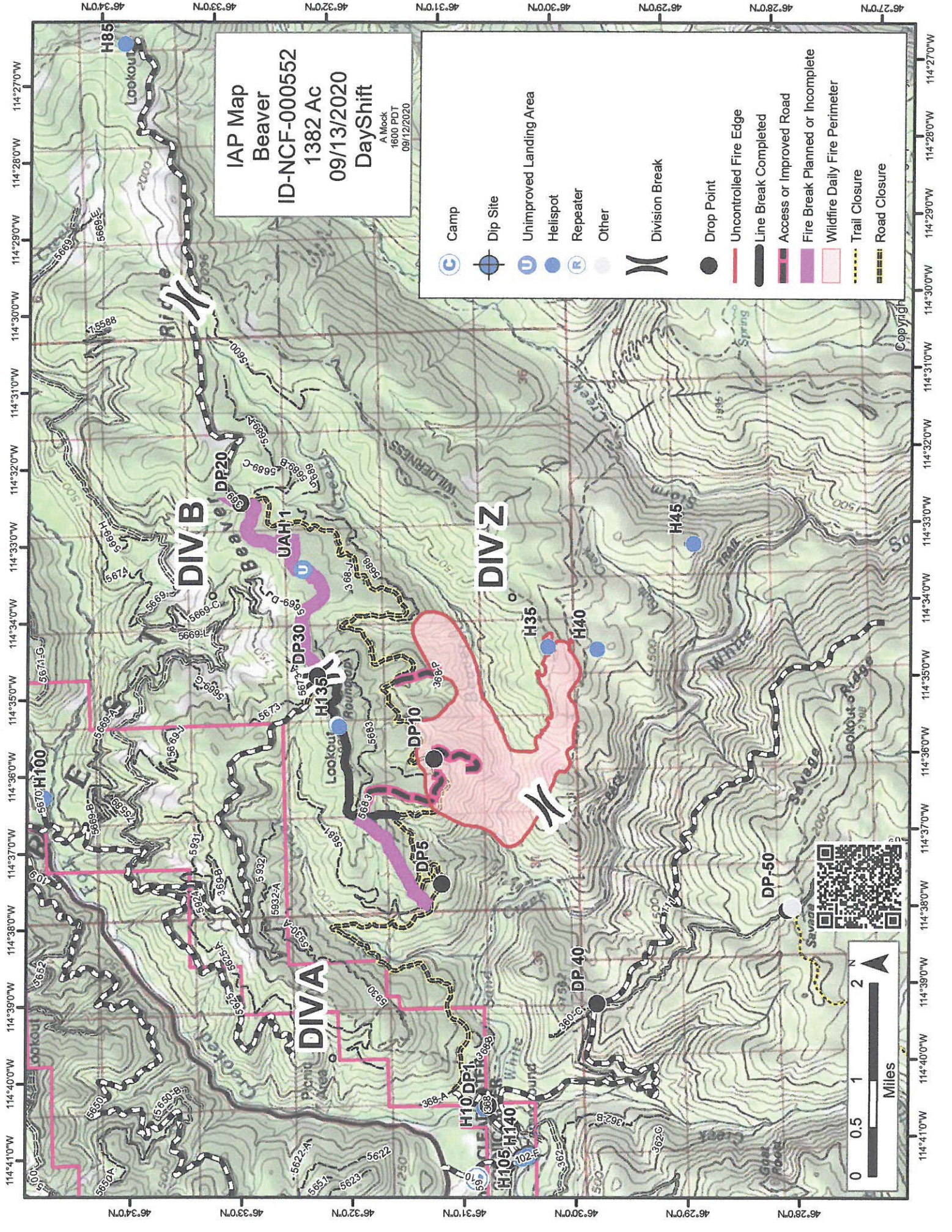
For those who have received approval from your home unit to extend, please consider:

1-If you have a NERV vehicle, remember to extend the rental period.

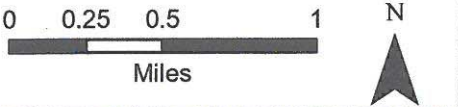
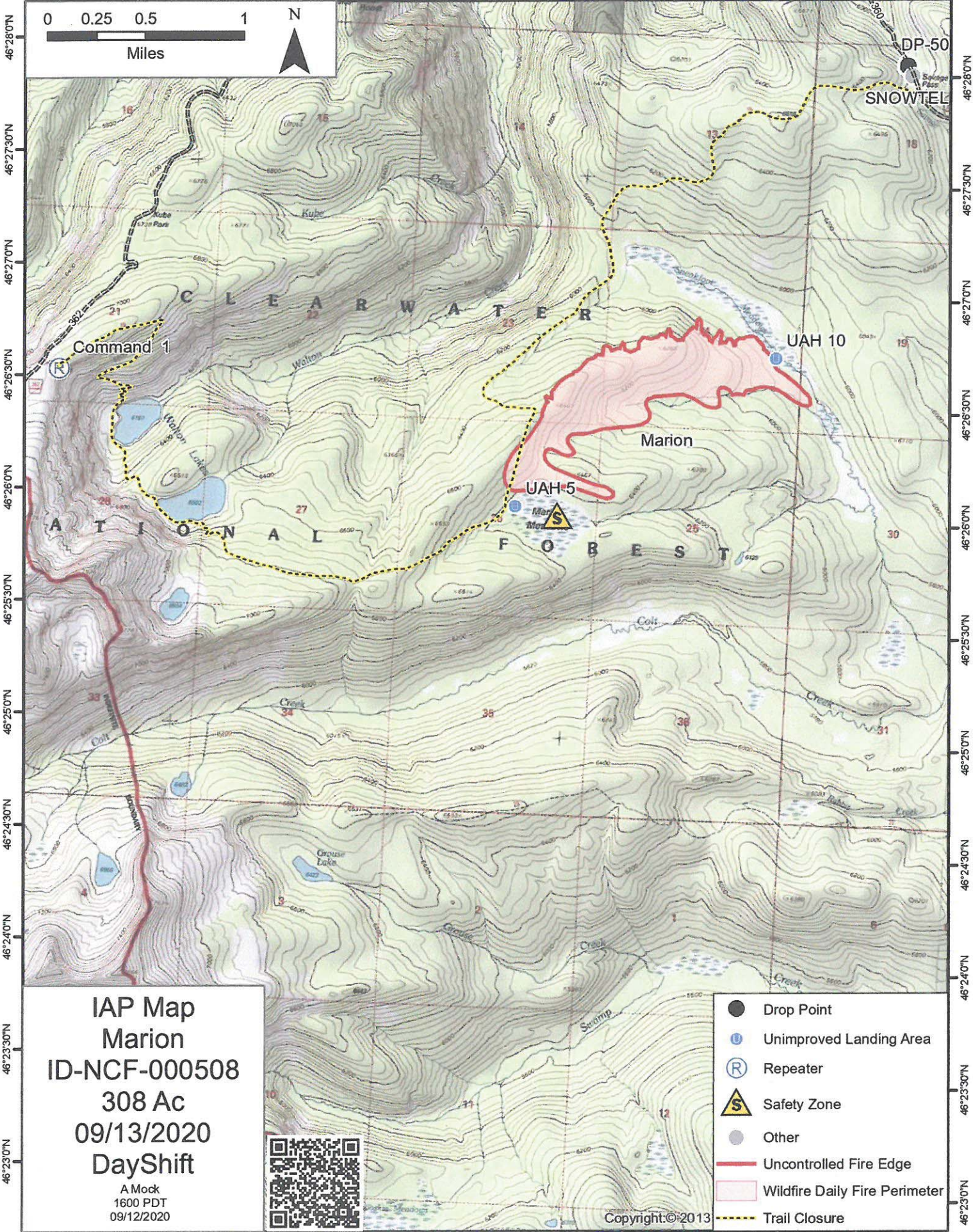
2-If you need you time sent to your home unit, please print the recipient's LEGIBLE email address at the bottom of your CTR.

3-USFS personnel: While in Paycheck, if you happen to extend past September 30, add 21 instead of 20 at the end of the P-code.

Example: P1NJD820 vs P1NJD821 override 0117



114°43'30"W 114°43'0"W 114°42'30"W 114°42'0"W 114°41'30"W 114°41'0"W 114°40'30"W 114°40'0"W 114°39'30"W 114°39'0"W 114°38'30"W 114°38'0"W



IAP Map  
Marion  
ID-NCF-000508  
308 Ac  
09/13/2020  
DayShift

A Mock  
1600 PDT  
09/12/2020



- Drop Point
- U Unimproved Landing Area
- Ⓡ Repeater
- ⚠ Safety Zone
- Other
- Uncontrolled Fire Edge
- ▭ Wildfire Daily Fire Perimeter
- - - Trail Closure

Copyright © 2013

114°43'0"W 114°42'30"W 114°42'0"W 114°41'30"W 114°41'0"W 114°40'30"W 114°40'0"W 114°39'30"W 114°39'0"W 114°38'30"W 114°38'0"W 114°37'30"W



# MEDICAL PLAN (ICS 206 WF)

Controlled Unclassified Information//Basic

## Medical Incident Report

**FOR A NON-EMERGENCY INCIDENT, WORK THROUGH CHAIN OF COMMAND TO REPORT AND TRANSPORT INJURED PERSONNEL AS NECESSARY.**

**FOR A MEDICAL EMERGENCY: IDENTIFY ON SCENE INCIDENT COMMANDER BY NAME AND POSITION AND ANNOUNCE "MEDICAL EMERGENCY" TO INITIATE RESPONSE FROM IMT COMMUNICATIONS/DISPATCH.**

**Use the following items to communicate situation to communications/dispatch.**

**1. CONTACT COMMUNICATIONS / DISPATCH (Verify correct frequency prior to starting report)**

*Ex: "Communications, Div. Alpha. Stand-by for Emergency Traffic."*

**2. INCIDENT STATUS: Provide incident summary (including number of patients) and command structure.**

*Ex: "Communications, I have a Red priority patient, unconscious, struck by a falling tree. Requesting air ambulance to Forest Road 1 at (Lat./Long.) This will be the Trout Meadow Medical, IC is TFLD Jones. EMT Smith is providing medical care."*

Severity of Emergency / Transport Priority	<input type="checkbox"/> <b>RED / PRIORITY 1 Life or limb threatening injury or illness. Evacuation need is IMMEDIATE</b> <i>Ex: Unconscious, difficulty breathing, bleeding severely, 2° - 3° burns more than 4 palm sizes, heat stroke, disoriented.</i> <input type="checkbox"/> <b>YELLOW / PRIORITY 2 Serious Injury or illness. Evacuation may be DELAYED if necessary.</b> <i>Ex: Significant trauma, unable to walk, 2° - 3° burns not more than 1-3 palm sizes.</i> <input type="checkbox"/> <b>GREEN / PRIORITY 3 Minor Injury or illness. Non-Emergency transport</b> <i>Ex: Sprains, strains, minor heat-related illness.</i>	
Nature of Injury or Illness & Mechanism of Injury		<i>Brief Summary of Injury or Illness (Ex: Unconscious, Struck by Falling Tree)</i>
Transport Request		<i>Air Ambulance / Short Haul/Hoist Ground Ambulance / Other</i>
Patient Location		<i>Descriptive Location &amp; Lat. / Long. (WGS84)</i>
Incident Name		<i>Geographic Name + "Medical" (Ex: Trout Meadow Medical)</i>
On-Scene Incident Commander		<i>Name of on-scene IC of Incident within an Incident (Ex: TFLD Jones)</i>
Patient Care		<i>Name of Care Provider (Ex: EMT Smith)</i>

**3. INITIAL PATIENT ASSESSMENT: Complete this section for each patient as applicable (start with the most severe patient)**

Patient Assessment: See IRPG page 106

Treatment:

**4. TRANSPORT PLAN:**

Evacuation Location (if different): (Descriptive Location (drop point, intersection, etc.) or Lat. / Long.) Patient's ETA to Evacuation Location:

Helispot / Extraction Site Size and Hazards:

**5. ADDITIONAL RESOURCES / EQUIPMENT NEEDS:**

*Example: Paramedic/EMT, Crews, Immobilization Devices, AED, Oxygen, Trauma Bag, IV/Fluid(s), Splints, Rope rescue, Wheeled litter, HAZMAT, Extrication*

**6. COMMUNICATIONS: Identify State Air/Ground EMS Frequencies and Hospital Contacts as applicable**

Function	Channel Name/Number	Receive (RX)	Tone/NAC *	Transmit (TX)	Tone/NAC *
COMMAND					
AIR-TO-GRND					
TACTICAL					

**7. CONTINGENCY: Considerations: If primary options fail, what actions can be implemented in conjunction with primary evacuation method? Be thinking ahead.**

**8. ADDITIONAL INFORMATION: Updates/Changes, etc.**

**REMEMBER:** Confirm ETA's of resources ordered. Act according to your level of training. Be Alert. Keep Calm. Think Clearly. Act Decisively.