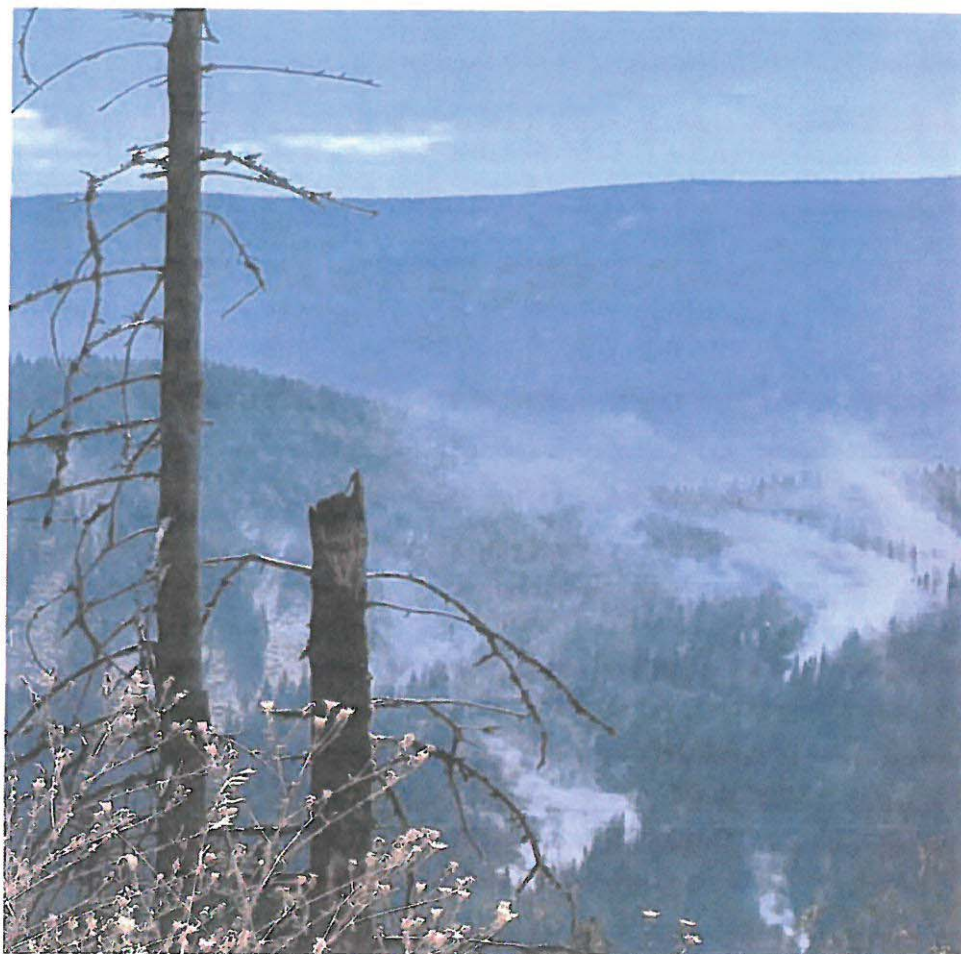


Beaver Fire

ID-NCF-000552
P1NJD820 (0117)
710044

Marion Fire

ID-NCF-000508
P1EKT520 (0117)



Incident Action Plan

Monday

September 14, 2020

Day Operational Period 0700 - 1900

Night Operational Period 1800 - 0800

INCIDENT OBJECTIVES1. Incident Name
Beaver Fire, Marion Fire2. Date Prepared
09/13/20203. Time Prepared
2100

4. Objectives

High Value Assets and Resources to be Protected:

Public and first responder health from COVID-19; community of Powell and associated private inholdings/property; smoke sensitive communities, including Missoula and the Bitterroot valley; public and private timber lands.

Leader's Intent:

- Protect human life. Firefighter and public safety will be given the highest priority at all times.
- Minimize the exposure of the public and responders to transmission or infection from COVID-19 by following CDC, county and NPCNF measures relating to social distancing, masks and cleaning procedures.
- Establish and maintain information sharing networks with communities potentially impacted by smoke.
- Manage smoke, while providing for public safety, to provide for desirable air quality and visibility.
- Minimize fire impacts to Whitebark pine seed collection trees.
- Manage any portion of the fire located within a wilderness area using strategies and tactics that are commensurate with wilderness values.
- Take appropriate measures to reduce chances of noxious weed spread onto the forest, including weed wash of vehicles before entering the incident area and when demobilizing.
- Commit incident resources only where there is a high probability of meeting reasonable objectives or when the risk of injury or death can be mitigated.
- Maintain and foster relationships with users of public lands, landowners, agencies and local communities.
- Adhere to applicable work-rest guidelines to reduce fatigue and ensure that assigned fire-fighting personnel receive adequate rest.
- Maintain a workplace and atmosphere of mutual respect and free of any harassment. There will be no tolerance for any unethical, illegal drug or alcohol related incidents.
- Effectively manage costs commensurate with the high value assets and resources to be protected and risks..
- Efficiently demobilize resources in a manner that will ensure safe travel and "right-sizing" consistent with demobilization glidepath direction.

Operational Objectives:

The incident will be managed utilizing contain/confine and point protection strategies.

5. Prepared By (Planning Section Chief)
Will Bernard:6. Approved By (Incident Commander)
Bob Fry:

ORGANIZATION ASSIGNMENT LIST		9. Operations Section		
1. Incident Name Beaver Fire, Marion Fire		Chief-Line	Joe Brabender*, Rich Cowger (t)*	
		Chief-Planning	Ron Naber*	
		a. Divisions/Groups		
2. Date 09/14/20	3. Time Day: 0700 - 1900 Night: 1800 - 0800		Beaver Fire	
4. Operational Period: Day Shift / Night Shift		Division/Group	Alpha / Bravo Day	Manny Mendoza*, Jeff Barnes (t)*
		Division/Group	Alpha / Bravo Night	Danny Lemer*
5. Incident Commander and staff		Division/Group	Zulu	Monitored
Incident Commander	Bob Fry, Paul Roose (t)*	Group	Road Group	Mark Zink*
Deputy IC	Jay Winfield*	Division/Group		
Safety Officers	Marvin Carpenter, Steve Wyatt*, Dean Whitney (t)*	b. Divisions/Groups		
Information Officer	Penny Bertram, Nick Holloway (t), Jill Cobb (v), Paula Short (v)		Marion Fire	
Liaison Officer	Lance Burns, Chris Grove*			
6. Agency Representatives		Division/Group	Mike	Kris George*, Jacob Jeresek (t)*
Agency	Name	Division/Group		
FS Agency Admin	Brandon Knapton, Ron Tipton (t)	Division/Group		
FS Deputy Fire Staff Officer	Barry Ruklic	Division/Group		
FS AFMO	Michael Wood	Division/Group		
		Division/Group		
		c. Divisions/Groups		
7. Planning Section				
Chief	Will Bernard	Division/Group		
Resources Unit	Jody Pettit*	Division/Group		
Check In	Nolan Baldwin (t)*	Division/Group		
Demobilization Unit	Joe Read	Division/Group		
Documentation	Danny Baggao	Division/Group		
Situation Unit	Chad Ramsay*	Division/Group		
GIS Specialist	Andrew Mock	d. Air Operations Branch		
Fire Behavior	Eric Trimble*	Air Operations Branch Director	Sal Garcia (Grangeville)	
FS Resource Advisor	Rebecca Lloyd *	Air Attack Supervisor		
IT Support	Ed Yeager	Air Support Supervisor		
		Helicopter Coordinator		
		Air Tanker Coordinator		
8. Logistics Section		10. Finance Section		
Chief	Tyler Rae	Chief	Dale Harrison, Jamie Porter,	
Facilities Unit		Time Unit Leader		
Supply Unit	Bryan Connelley	Cost Unit	Liz Behrends (t)	
Ordering	Cindy Wharton	Personnel	Amy Erickson (t)	
Communications Unit	Tom Robbins*	Equipment	Lisa Hawdon	
Medical Unit	Teri Miller*			
Base Camp	AJ Angelo*, Ian Garthwait(t)*	*Located at Powell Base Camp (v) = virtual		
Ground Support Unit		Prepared by (Resource Unit Leader) Jody Pettit		
Security Unit				

Beaver Fire Weather Forecast

Spot Forecast from the National Weather Service Missoula, MT
Forecast is based on start time of 0700 PDT on Sept 14, 2020
549 PM MDT 9/13/2020

DISCUSSION . . .

Smoke models are indicating a decrease in the amount of smoke Monday morning but relatively dense smoke should return to the area by Monday afternoon. Humidity should be also be slightly higher than Sunday. Southwesterly winds are expected to increase by afternoon but smoke may moderate wind speed. Humidity is expected to trend higher on Tuesday with a decrease in smoke.

MONDAY . . .

- * Sky/Weather.....Mostly Cloudy/Smokey.
- * CWR (> 0.10 Inch)...0%.
- * LAL.....1.
- * Max Temperature.....74-79°F.
- * Min Humidity.....18-23%.
- * Wind (20 ft).....South 5 mph becoming SW 8-10 mph w/gusts to 15 mph by afternoon.
- * Haines Index.....4 low.

MONDAY NIGHT . . .

- * Sky/Weather.....Partly Cloudy/Smokey.
- * CWR (> 0.10 Inch)...0 percent.
- * LAL.....1.
- * Min Temperature.....48-53°F.
- * Max Humidity.....45-50%.
- * Wind (20 ft).....SW 5-7 mph becoming variable after midnight.

TUESDAY . . .

- * Sky/Weather.....Partly Cloudy/Haze.
- * CWR (> 0.10 Inch)...0%.
- * LAL.....1.
- * Max Temperature.....72-77°F.
- * Min Humidity.....24-29%.
- * Wind (20 ft).....Variable 2-4 mph becoming West 5 mph by afternoon.
- * Haines Index.....3 very low.

TUESDAY NIGHT . . .

- * Sky/Weather.....Mostly Cloudy/Haze.
- * CWR (> 0.10 Inch)...10%.
- * LAL.....1.
- * Min Temperature.....47-52°F.
- * Max Humidity.....57-62%.
- * Wind (20 ft).....West to 5 mph.

WEDNESDAY...Mostly Clear/Haze. Lows 45-50. Highs 74-79. Min RH: 23-28%. SW winds to 5 mph.

THURSDAY..., Mostly Clear/Haze. Lows 45-55. Highs 75-85. Terrain-driven winds to 10 mph.

FRIDAY...Partly Cloudy/Haze. Lows 45-55. Highs 70-80. NE winds to 10 mph

SATURDAY...Mostly Cloudy, Chance of rain. Lows 45-55. Highs 55-65.

FIRE BEHAVIOR FORECAST

FORECAST NUMBER: 13

INCIDENT TYPE: Wildfire

FIRE NAME: Beaver/Marion

OPERATIONAL PERIOD: Sept 14, 2020 Monday

DATE ISSUED: Sept 13, 2020

TIME ISSUED: 1800

UNIT: ID-Clear-Nez

PREPARED BY: Eric Trimble – FBAN

INPUTS

WEATHER SUMMARY:

Sky Weather: Mostly Cloudy/Smokey.

CWR (>0.10"): 0%

Max Temps: 74-79°

Min RH: 18-23% **Haines:** 4 (low). **LAL:** 1

Winds (20 ft): South 5 mph becoming SW 8-10 mph w/gusts to 15 mph by afternoon.

FUELS:

Beaver: Mixed conifer forest dominated by DF, LPP, WL, SAF, and ES; with WRC on north aspects/valley bottoms. Mature SAF/ES conifer fuels with high crown bulk density and low crown base height. Mature DF/GF/WL/LPP conifer fuels with high crown bulk density and high crown base height. Herbaceous and live woody fuels are largely cured and will contribute to surface fire spread.

Marion: Mature, relatively open SAF and ES with dispersed pockets of regen and dead/down fuels. Mature SAF/ES conifer fuels with low to moderate crown bulk density and yet low crown base height.

Fine Fuels: 4-6%; 10-hr: 5%; 100hr: 9%; 1000hr: 12%

ERC: 80th percentile and trending up.

OUTPUTS - FIRE BEHAVIOR

GENERAL:

Terrain and fuel-driven fire. Expect active surface fire with group-tree torching and short-range spotting. Off-site smoke impacts may moderate fire behavior. Nevertheless, highest activity to occur within the mature/dense stands of spruce and sub-alpine fir. Red alder fuels and young conifer plantations will generally discourage large fire growth.

Backing/flanking spread 1-2 ft/min with flames 2-4 ft. Head fire with possible 5-8 ft. flame lengths and 10-15 ft/min rates of spread with wind/slope alignment, higher with torching and short-range spotting.

Probability of Ignition (PIG): 60-70% during the peak of the burning period.

SPECIFIC:

Beaver Fire – Expect active surface fire with group-tree torching and short-range spotting, backing and flanking. Fire will continue to move uphill, and to the NE. High probability for the fire to run up to the 5683 Road, below Roundtop LO. Depending on the shading from both smoke and clouds a modest growth in the fire perimeter is anticipated.

Marion Fire – Expect active surface fire with group-tree torching and short-range spotting, backing and flanking. Fire will continue to move to the ENE.

AIR OPERATIONS: Expect poor visibility due to smoke with light turbulence.

SAFETY: Maintain good situational awareness as conditions remain conducive for crown fire activity.

ASSIGNMENT LIST		1. Branch	2. Division/Group			
3. Incident Name Beaver Fire		4. Operational Period Date: 09/14/20		Day 0700 - 1900 Night 1800 - 0800		
5. Operations Personnel						
Operations Chief	Joe Brabender, Rich Cowger (t)		Division/Group Supervisor		Manny Mendoza, Jeff Barnes (t)	
Branch Director			Air Support Group Supervisor		Sal Garcia	
6. Resources Assigned This Period						
Strike Team/Task Force/ Resource Designator	Last Shift	Leader	No. Pers.	Trans. Needed	Drop Off PT./Time	Pick Up PT./Time
O-12 TFLD	9/17	Jacob Cafferty	1	N		
O-15 TFLD (t)	9/17	Clint Dean	1	N		
C-5 TY2IA Palouse	9/18	Cody Cline, Chad Borg (t)	19	N		
C-7 HC2 Lava Forestry	9/26	Jesus Ruiz	20	N		
E-44 ENG6 Peanut Pie	9/19	Sam Elkins	3	N		
E-71 ENG6 Torch Fire	9/21	Donavan Davis	3	N		
O-17 Timber Specialist	9/14	Jake Jararczeski	1	N		
O-18 Timber Specialist	9/14	Ray Craig	1	N		
O-16 HEQB	9/17	Robbie Easley	1	N		
O-33 HEQB (t)	9/18	Andrew Brown	1	N		
E-50 EXCA2 Cox	9/20	Marvin Gregg	2	N		
E-55 MAST Downing	9/19	Wes Renne	2	N		
E-56 FEL1 Downing	9/19	Aaron Downing	2	N		
E-57 FEL1 Welch Brothers	9/19	Jim Bonnalie	2	N		
E-59 SKD1 Welch Brothers	9/19	Craig Welch	2	N		
E-64 SKD1 Bonnalie	9/19	Clint Mader	1	N		
O-2.04 SOF2	9/21	Steve Wyatt	1	N		
O-2.05 SOF2 (t)	9/13	Dean Whitney	1	N		
E-39 AMBU AMR NW	9/17	Patterson, Amback	2	N		
7. Control Operations						
Task: Scout and establish containment lines to the West of the fire. Purpose: Prevent fire from impacting private property to the West and North of the fire. End State: Fire did not reach private property to the West and North of the fire.						
8. Special Instructions						
Call out mile marker # on radio, TAC 11 LCES shall be in place prior to engaging fire. All COVID-19 mitigation protocols shall be followed.						
9. Division/Group Communication Summary						
Function	Frequency - RX	Frequency - TX	Tone	Channel	Comments	
TAC 6	168.0500 N	168.0500 N	136.5	6		
TAC 11 (Logging)	168.2500 N	168.2500N	136.5	11		
A/G	167.1250 N	167.1250 N		15		
CMD 1	170.0000 N	166.6750 N	136.5	1		
CMD 2	170.6875 N	166.5750 N	136.5	2		
Prepared by (RESL) Jody Pettit		Approved by (PSC2) Will Bernard		Date 09/13/20		Time 2000

ASSIGNMENT LIST		1. Branch	2. Division/Group			
3. Incident Name Beaver Fire		4. Operational Period Date: 09/14-15/20		Day 0700 - 1900 Night 1800 - 0800		
5. Operations Personnel						
Operations Chief	Joe Brabender, Rich Cowger (t)		Division/Group Supervisor		Danny Lemer	
Branch Director			Air Support Group Supervisor		Sal Garcia	
6. Resources Assigned This Period						
Strike Team/Task Force/ Resource Designator	Last Shift	Leader	No. Pers.	Trans. Needed	Drop Off PT./Time	Pick Up PT./Time
O-31 TFLD	9/18	Chad Daugherty	1	N		
O-32 TFLD(t)	9/19	William Mack	1	N		
E-45 ENG6 Firebrand	9/19	Lauren Bendel	2	N		
E-38 FORW Hester	9/19	Jack Hester	1	N		
E-80 Log Processor	9/2	Matt Scott	2	N		
E-83 Log Processor	9/2	Jeremy Hester	2	N		
E-40 Log Truck Anderson	9/19	Brett Flodin	1	N		
E-41 Log Truck Anderson	9/19	Kelly Glessner	1	N		
E-42 Log Truck Anderson	9/19	Casey Nelson	1	N		
E-63 Log Truck Nez Tribe	9/20	Jeremy Littlefield	1	N		
E-77 Log Truck Hester	9/22	Dan Maple	1	N		
E-78 Log Truck Cox	9/23	Stewart Wilson	1	N		
E-49 ECXA2 Flash Excavating	9/20	Gordon Eckel	2	N		
E-66 EXCA2 Madden	9/20	Moses Madden	1	N		
E-53 Log Loader Cox	9/19	Rick Cox	2	N		
E-81 Log Loader Hester	9/26	Joe Hester	2	N		
O-11 EMTF	9/17	Jessica Tullus	1	N		
O-22 EMPF	9/19	Alyse Gutierrez	1	N		
7. Control Operations						
Task: Move log decks to DP1. Monitor fire. Purpose: Complete the fuel break. Ensure safety of log trucks and fire fighters. End State: Log decks have been moved to DP1. Everyone is safe.						
8. Special Instructions						
Call out mile marker # on radio, TAC 11 LCES shall be in place prior to engaging fire. All COVID-19 mitigation protocols shall be followed.						
9. Division/Group Communication Summary						
Function	Frequency - RX	Frequency - TX	Tone	Channel	Comments	
TAC 7	168.2000 N	168.2000 N	136.5	7		
TAC 11 (Logging)	168.2500 N	168.2500N	136.5	11		
A/G	167.1250 N	167.1250 N		15		
CMD 1	170.0000 N	166.6750 N	136.5	1		
CMD 2	170.6875 N	166.5750 N	136.5	2		
Prepared by (RESL) Jody Pettit		Approved by (PSC2) Will Bernard		Date 09/13/20		Time 2000

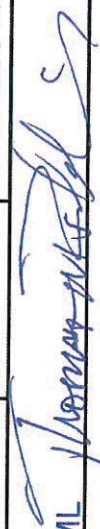
ASSIGNMENT LIST		1. Branch	2. Division/Group			
			Road Group			
3. Incident Name Beaver Fire		4. Operational Period Date: 09/14/20		Day 0700 - 1900 Night 1800 - 0800		
5. Operations Personnel						
Operations Chief	Joe Brabender, Rich Cowger (t)		Group Leader	O-38 Mark Zink		
Branch Director			Air Support Group Supervisor	Sal Garcia		
6. Resources Assigned This Period						
Strike Team/Task Force/ Resource Designator	Last Shift	Leader	No. Pers.	Trans. Needed	Drop Off PT./Time	Pick Up PT./Time
E-69 GRDR Madden	9/20		1	N		
E-46 WTS2 Smith20	9/27	Stephen Roach	1	N		
E-74 WTS2 DZS Contracting	9/21	Casey Smith	1	N		
E-72 WTS1 High Sierra	9/21	Dale Iseman	2	N		
7. Control Operations						
<p>Task: Spot blade 111 Rd. from bridge to Mile 5. Purpose: Smooth road surface to enhance driving safety. End State: Road is safe to travel.</p>						
8. Special Instructions						
<p>Call out mile marker # on radio, TAC 11 LCES shall be in place prior to engaging fire. All COVID-19 mitigation protocols shall be followed.</p>						
9. Division/Group Communication Summary						
Function	Frequency - RX	Frequency - TX	Tone	Channel	Comments	
TAC 10 (Roads)	166.7750 N	166.7750 N	136.5	10		
TAC 11 (Logging)	168.2500 N	168.2500N	136.5	11		
A/G	167.1250 N	167.1250 N		15		
CMD 1	170.0000 N	166.6750 N	136.5	1		
CMD 2	170.6875 N	166.5750 N	136.5	2		
Prepared by (RESL) Jody Pettit		Approved by (PSC2) Will Bernard		Date 09/13/20		Time 2000

AIR OPERATIONS SUMMARY (ICS 220)

1. Incident Name: Beaver ID-NCF-000552 Marion ID-NCF-000508	2. Operational Period: Date From: Sept. 14, 2020 Date To: Sept. 14, 2020 Time From: 0730 Time To: 2000	3. Sunrise: Sunset: 0623 1855				
4. Remarks (safety notes, hazards, air operations special equipment, etc.): * Aviation requirement will be reviewed and applied where needed Consider the safety and risk analysis while planning and ordering A/C * A/C availability will be shared as needed, unless assigned to the specific Incident * A/C Available & assigned to the Powell - order through comm		5. Ready Alert Aircraft: Medivac: 1HQ Short Haul Helicopter New Incident: Two Bear Air-(Hoist @				
7. Personnel:	Name: Phone Number: Sal Garcia 760 310-0138 N/A Sharing with Forest Connie Stickel 503 348-4581	8. Frequencies:	AM FM Air/Air Fixed-Wing Air/Air Rotary-Wing - Flight Following 127.0750 A-10 Air/Ground 167.1250 A-9 Command Refer to the Comm Plan Deck Coordinator Take-Off & Landing Coordinator Air Guard 168.6250			
6. Temporary Flight Restriction Number: Altitude: TFR 0/6099 - Freq 127.0750 Center Point: 7NM / Alt 10,000	9. Fixed-Wing (category/kind/type, make/model, N#, base): Air Tactical Group Supervisor Aircraft: A/C avail. at Grangeville Airport / Helibase Air Attack - primary AA-117 (N44NC) AA-200KQ @ GIC Other Fixed-Wing Aircraft: Seats - T-822 @ GIC & T-835 @ GIC Refer to the Aviation Map for Helispot info - Lat / Long, specific Water dipping sites on the map w/lat & Long					
10. Helicopters (use additional sheets as necessary):						
FAA N# Assigned to H-16920 H-974H HB-116 HG-562AJ	Category/Kind/Type BEAVER INC. T2 T3 T1 T1	Make/Model Bell 212 Bell 407 Kaman Aero K-1200 CH-47D	Base Powell For Planning Located at Grangeville - Airport	Available Available Local Available Local Available local Available Local	Start 0800 0800 0800 0800	Remarks Order through dispatch Order through dispatch Standard
11. Prepared by: Name: Sal Garcia		Position/Title: AOB Signature: _____				
Date/Time: 9/13/2020 - 1800						
ICS 220, Page 1						

AIR OPERATIONS SUMMARY (ICS 220)

1. Incident Name: Beaver ID-NCF-000552 Marion ID-NCF-000508	2. Operational Period: Date From: Sept. 14, 2020 Time From: 0730 Date To: Sept. 14, 2020 Time To: 2000	3. Sunrise: 0623	Sunset: 1855
12. Task/Mission/Assignment (category/kind/type and function includes: air tactical, reconnaissance, personnel transport, search and rescue, etc.):			
Category/Kind/Type and Function	Name of Personnel or Cargo (if applicable) or Instructions for Tactical Aircraft	Mission Start	Fly From Fly To
	A/C request will be assigned as needed with Ops and Divisions approval. Helicopter N16920, Bell 212 is assigned to the Beaver Inc.	0800	
	Refer to the Aviation Map, for specific location, marking and lat / long for respective sites and spots.		
	Additional A/C's are available at Missoula, Montana Airbase if needed		
	Additional A/C's are assigned at Grangeville airport -		
	To contact AOBD, contact Powell Communication and they will forward the message to me.		
	Pending Approval -- Ordered 1 AA to assist with the operation / lead plane		
	2 - Heavy Airtankers to be used to secure and enforce the line		
	Comm - contact Div A / M prior to launching of Airtanker - Timber / Private property /		
	Scheduled Recon: Type III, at Powell @ 1500 w/3 flight helmets		
	Type I helicopter on order for 1100 (9/14/2020) Fire, contact Div A on A/G		
	Comm - contact Div A / M prior to launching of Helicopter - N16920 Type II, available for bucket operations when needed		
11. Prepared by: Name: <u>Sal Garcia</u> Position/Title: <u>AOBD</u> Signature: _____			
ICS 220, Page 2 Date/Time: <u>9/13/2020 - 1800</u>			

INCIDENT RADIO COMMUNICATIONS PLAN		Incident Name BEAVER FIRE		Date/Time Prepared 9/13/2020 1500		Operational Period Date/Time 9/14/2020 0700 – 9/15/2020 0700			
Ch #	Function	Channel Name	Assignment	RX Freq N or W	RX Tone	TX Freq N or W	Tx Tone	Mode	Remarks
1	Repeater	Command 1	All Resources	170.0000 N	136.5	166.6750 N	136.5	A	To Communications
2	Repeater	Command 2	All Resources	170.6875 N	136.5	166.5750 N	136.5	A	To Communications
3									
4									
5									
6	Tactical	TAC 6	DIV A	168.0500 N	136.5	168.0500 N	136.5	A	NIFC Tac
7	Tactical	TAC 7	DIV B	168.2000 N	136.5	168.2000 N	136.5	A	NIFC Tac
8	Tactical	TAC 8	DIV Z	168.6000 N	136.5	168.6000 N	136.5	A	NIFC Tac
9	Tactical	Tac 9	DIV M	166.7250 N	136.5	166.7250 N	136.5	A	NIFC Tac
10	Tactical	TAC 10	Roads	166.7750 N	136.5	166.7750 N	136.5	A	NIFC Tac
11	Tactical	Tac 11	Logging	168.2500 N	136.5	168.2500 N	136.5	A	NIFC Tac
12	Local	E Beaver Ridge	I/A	171.5750 N		166.2625 N	100.0	A	NFS Repeater
13	Local	N Rocky Ridge	I/A	171.5750 N		166.2625 N	162.2	A	NFS Repeater
14									
15	Air/Ground	A/G Primary	All	167.1250 N		167.1250 N		A	NIFC A/G Primary
16	Air Guard	Air Guard	All	168.6250 N		168.6250 N	110.9	A	Emergency
Prepared By (Communications Unit)		Thomas Robbins COML 		Incident Location		Powell ID			

The convention calls for frequency lists to show four digits after the decimal place, followed by either an "N" or a "W", depending on whether the frequency is narrow or wide band. Mode refers to either "A" or "D" indicating analog or digital (e.g. Project 25) or "M" indicating mixed mode. All channels are shown as if programmed in a control station, mobile or portable radio. Repeater and base stations must be programmed with the Rx and Tx reversed.

Incident:
Beaver Fire and Marion Fire

Date:
September 14, 2020

Shift: Day
0700-1900

SAFETY MESSAGE

SAFETY IS OUR FIRST PRIORITY

Fire fighter and public safety comes first on every fire, every time



You may have noticed this sign on Highway 12 coming or going to ICP or Base camp.

On August 2nd 2017 Brent Witham was a member of the Vista Grade Hotshot crew that was on the Lolo Peak fire.

He was 29 and was a sawyer for the crew. He had a decade of experience. He loved his job.

That all ended on August 2nd 2017. A date his family will never forget. He was cutting down A 50-foot tree when it unexpectedly fell and hit Brent. He died within minutes of the accident.

Firefighting is a very risky profession. Firefighters die every year. That is a very unfortunate part of firefighting. Through mitigations we can reduce that risk to the lowest level possible.

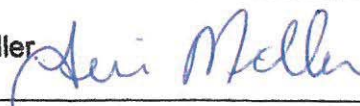

We need you, the firefighting resources, to implement those mitigations for them to work.

Use your knowledge, use caution, implement mitigations, and size up every task before proceeding,

Lower your exposure to risk so that you can return home safely to your family.

***Your Safety Team.... Marvin Carpenter, Steve Wyatt,
Dennis Crawford, Dean Whitney (T)
and Each of YOU!!!***

MEDICAL PLAN (ICS 206 WF)

1. Incident/ project name and address:						2. Operational Period: Date/Time					
Beaver Powell Idaho						9-14-20 0700-1900					
3. Ambulance Services											
Name			Complete address			Phone & EMS Frequency			ALS ✓		
Missoula Ambulance Service INC			2600 Palmer St Missoula, MT 59808			406-549-2325			X		
Powell QRU			Powell Ranger Station			911					
AMR Ambulance			Division A			Command					
4. Air Ambulance Services											
Name			Location/remarks			Phone & EMS Frequency		ALS ✓	hoist ✓	night ✓	
Life Flight Network			Missoula, MT/Sand Point, ID/Butte			911 406-829-7070		X		X	
Alert Air Ambulance			Kalispell, MT			911 406-752-5111		X		X	
Two Bear Air			Whitefish, MT			911 406-297-2121			X	X	
5. Hospitals											
Name and Address		Phone	Level of care	Heli Pad ✓	If Helipad, Lat./Long. (DD mm.mmm') Datum WGS84			Travel time to hosp: min's			
Eastern Idaho Regional Medical Center 3100 Channing Way Idaho Falls, ID 83404		208-529-6111	Trauma II Burn center	X	N 43 28' 17" W 111 59' 29.5"					285	
St. Patrick Hospital 500 Broadway Missoula, MT		406-543-7271	Trauma II	X	N 46 52.524 W113 59.969					68	
Community Medical Center 2827 Ft. Missoula Rd Missoula, MT		406-728-4100	Trauma III	X	N 46 50.909 W 114 02.865					64	
6. Area Location Capability											
Branch, Div, Group	Aid Station Name; Responders		Equipment available	Emergency frequency	Ambulance ETA to site: min's		Nearby Helispot &/or DP	Helispot &/or DP lat/long (DD mm.mmm') Datum WGS 84			
Powell Ranger Station	MEDL/EMPF Teri Miller		ALS								
Division A/B NIGHT	Jessica Tullis Alyse Gutierrez		EMTF EMPF								
Powell FOB/spike	Rosemary Myers		AEMT								
Division A	Jerry Patterson 509-999-0457 Josh Amback 509-688-7593		EMPF EMTF								
7. Notes, special procedures: Use Medical Incident Report for medical response and Medical Incident Pre-Planning worksheet for briefing. Medical Emergencies should be reported in accordance with Lolo/Kootenai Forest procedures.											
8. Prepared by (Medical Unit Leader)				9. Date/Time		10. Reviewed by (Safety Officer)				11. Date/Time	
Teri Miller 				9/13/20 1700		Steve Wyatt 				9/13/20 1700	

ICS-206 COVID-19 PLAN	1. Incident Name Beaver Fire	2. Date Prepared 9-13-20	3. Time Prepared	4. Operational Period
---------------------------------	--	------------------------------------	------------------	-----------------------

INCIDENT MEDICAL AID STATIONS

MEDICAL AID STATION	LOCATION	ISOLATION?	
		YES	NO
Covid precheck in screening	Base camp/spike		X
Daily screening-road check	Powell Ranger Station	X	
Daily self checks	ICP		X

LOCAL SUPPORT

A. OFF-SITE ISOLATION FACILITIES

NAME	LOCATION	PHONE	MEDICAL	
			YES	NO
Hotels in Missoula, MT	Contact SWZ COVID logistics	406-540-2965		X

COVID SCREENING PROCEDURES

ICP		medical	
		ALS	BLS
BASE CAMP SPIKE	Covid precheck screening prior to checking in to fire Daily covid self check screening for all modules		X
MEDICAL UNIT-Powell Ranger Stations	Daily covid screening prior to briefing Cold/warm/hot medical units present (on site isolation present)	X	

TESTING FACILITIES

NAME	ADDRESS	Apointment required		Phone	Days operation		Hours operation	
		Yes	No		Work day	Week end	WD	WE
Community Medical Center Rapid tes outpatient lab	2827 Fort Missoula rd Missoula MT	X		406-327-4378	M-F	Sat	0630 1730	0830 1330
Missoula City-county Health depart	4025 flynn lane Missoula MT	X		406-258-4770	M-F	NA	0900 1600	NA
Clearwater Valley Hospital Orfino, ID	301 Cedar ST Orfino, Id		X	hospital 208-476-4555 Lab 208-476-8035	M-F	Sat	0900 1700	0900 1700

COVID-19 PROCEDURES

Field Screenings-self check screening. Postive Symptoms? Isolate patient, notify MEDL follow instuctions given.

First aid station Screening. Postive symtoms? Isolate patient Notify MEDL, follow instructions

Notes: Isolation can take place in a vehicle short term or at Medical unit. Vehicle to be completely disinfected afterward before use. MEDL can assist contractors with Information. Expectations that Module of 1 concepts will be followed. See list of Covid expectations given to all resources upon checkin and follow. Nearest/reccomeded testing is at Community Medical Center rapid 2 hour results.

Prepared by medical unit leader
Teri Miller 406-544-3070

Reviewed by safety officer
Steve Wyatt 

ASSIGNMENT-SPECIFIC MEDICAL EMERGENCY ACTION PLAN

Pre-Planning for today's assignment

What are the likely hazards that could cause injuries? What kind of severe injuries?		
Who is the likely in-charge DIVS or overhead for an emergency in your assigned area today? (i.e. "Division Zulu")		
Who are the Medical personnel assigned to your part of the incident? What are their capabilities?		
Other Emergency Responders: fire dept., crash rescue, ambulance?		
Communications: Command channel, Air to Ground, Medical helicopters, local rescue/medical?		
Transportation methods available	Ground vehicle, drop point, coordinates, travel route?	
	Aircraft I.D, Helispot names, coordinates? Hoist capable, internal transport	
	Other available methods - contingency	
Most likely workforce for evacuation		

Response checklist

Who takes charge?

- DIVS or designated Overhead manages the overall scene and evacuation process.
- Medical personnel and emergency responders manage patients and assist in rescue/extrication.
- OPS and IC make command decisions so the emergency can be given full attention and management. They continue to manage ongoing incident operations.

Response sequence:

- First, secure the scene and protect responders and patients from further injury. Render first aid.
- Clear the Command channel for "Emergency Traffic only" if this is a critical emergency. If not, inform Communications of non-critical-emergency status and use normal communications.
- Contact closest Medical personnel and DIVS or designated Overhead for response.

Information for Communications: Medical Incident Report – See last page of IAP and IRPG pages 116 and 119.

Helicopter Extraction Operations: See IRPG pages 116 and 117.

Severe Weather: In the event of forecasted severe weather, implement Incident Severe Weather Plan.

Incident Within Incident: Upon arriving at the incident, all overhead should obtain and review the team's Incident Within Incident Plan.

Information Message

“A picture is worth a thousand words”

1. **Public Information is seeking photos and videos** for Inciweb, social media, and other information products. Photos and videos draw attention and help tell the story of the fire. The photos and videos that we have obtained from personnel in the field have gotten a lot of traction on social media.

We are looking for anything of interest that could be related to the Beaver (or Marion) Fire. Photos that show the hard work being done on the fire will really help the public understand what the team is doing and the need for this effort. Crews working, equipment, and air operations, mixed in with photos of the fire itself really work well.

How to get your photos to Information:

- a. Transfer photos and videos to whomever attends the 0700 Operational Period Briefing so they can provide them directly to the PIO at the meeting.
- b. Email them to 2020.beaver@firenet.gov or give to someone with internet access to send.

Please include any relevant information that may help put the photo in context.

2. A **Lost and Found** box is located inside the Supply Unit yurt.
3. People wishing to send **mail** should drop it off within the Supply Unit yurt.

BEAVER FIRE - MARION FIRE

Telephone List

Last Edited: 09/13 @ 1800

IC	BOB FRY	406-431-0102
DEPUTY IC	JAY WINFIELD	208-993-0768
IC (T)	PAUL ROOSE	406-640-1337
LIAISON	CHRIS GROVE	406-381-7600
LIAISON	LANCE BURNS	218-464-8465
INFORMATION	PENNY BERTRAM	406-239-3970
OPERATIONS PLANNING	RON NABER	406-640-1614
OPERATIONS PLANNING (T)	DANNY LEMER	406-250-1280
OPERATIONS - LINE	JOE BRABENDER	406-691-0369
OPERATIONS - LINE (T)	RICH COWGER	406-780-1317
SAFETY	MARVIN CARPENTER	406-594-5728
SAFETY	STEVE WYATT	406-437-8386
SAFETY (T)	DEAN WHITNEY	208-755-5956
PLANNING	WILL BERNARD	919-619-1408
RESOURCES	JODY PETTIT	208-290-8840
DEMOBILIZATION	JOE READ	406-253-1130
CHECK IN (T)	NOLAN BALDWIN	406-396-0074
DOCUMENTATION	DAN BAGGAO	575-910-7179
SITUATIONS	CHAD RAMSAY	208-290-2253
COMPUTER HELP	ED YEAGER	818-360-2519
PLANS OFFICE - POWELL		208-942-3123
		208-942-3133
READ	REBECCA LLOYD	406-830-0998
FINANCE	DALE HARRISON	715-499-1457
FINANCE	JAMIE PORTER	406-830-5220
COMP/CLAIMS (T)	AMY ERICKSON	406-207-3516
LOGISTICS	TYLER RAE	406-425-1038
BASE CAMP MGR	AJ ANGELO	406-544-3751
BASE CAMP MGR (T)	IAN GARTHWAIT	207-272-5020
ORDERING	CINDY WHARTON	423-341-1243
COMMUNICATIONS	TOM ROBBINS	406-698-7500
COMMUNICATIONS	BOB PEARSON	949-874-0586
MEDICAL	TERI MILLER	406-544-3070

Demob Information

TENTATIVE RELEASE

09/14/2020

EQUIPMENT

E-65	1000	BONNALIE LOGGING	Demob thru Powell
------	------	------------------	-------------------

OVERHEAD

O-27	0800	SARALECOS, ANDREW C	Demob thru Powell
------	------	---------------------	-------------------

O-4	1200	PEARSON, ROBERT M	Demob thru Lolo
-----	------	-------------------	-----------------

O-2.5	1200	WHITNEY, DEAN	Demob thru Powell
-------	------	---------------	-------------------

O-18	1800	CRAIG, RAYMOND K	Demob thru Powell
------	------	------------------	-------------------

O-17	1800	JARACZESKI, JAKE D	Demob thru Powell
------	------	--------------------	-------------------

09/15/2020

OVERHEAD

O-2.58	0900	BARNES, JEFFREY K	Demob thru Lolo
--------	------	-------------------	-----------------

O-35	0900	CRAWFORD, DENNIS	Demob thru Lolo
------	------	------------------	-----------------

09/16/2020

OVERHEAD

O-2.15	0800	WEST, MICHAEL B	Demob thru Lolo
--------	------	-----------------	-----------------

Finance Message

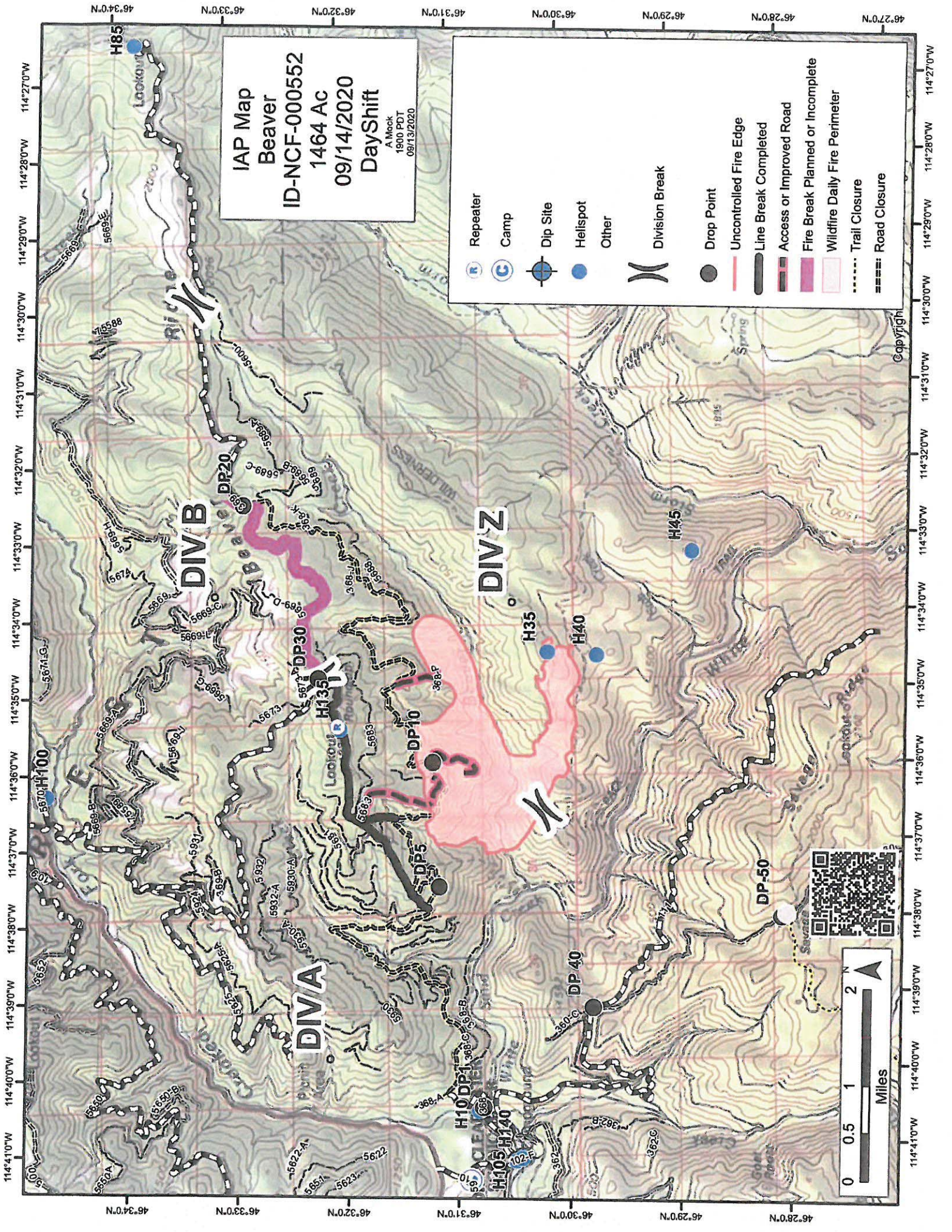
For those who have received approval from your home unit to extend, please consider:

- 1-If you have a NERV vehicle, remember to extend the rental period.
- 2-If you need you time sent to your home unit, please print the recipient's LEGIBLE email address at the bottom of your CTR.
- 3-USFS personnel: While in Paycheck, if you happen to extend past September 30, add 21 instead of 20 at the end of the P-code.

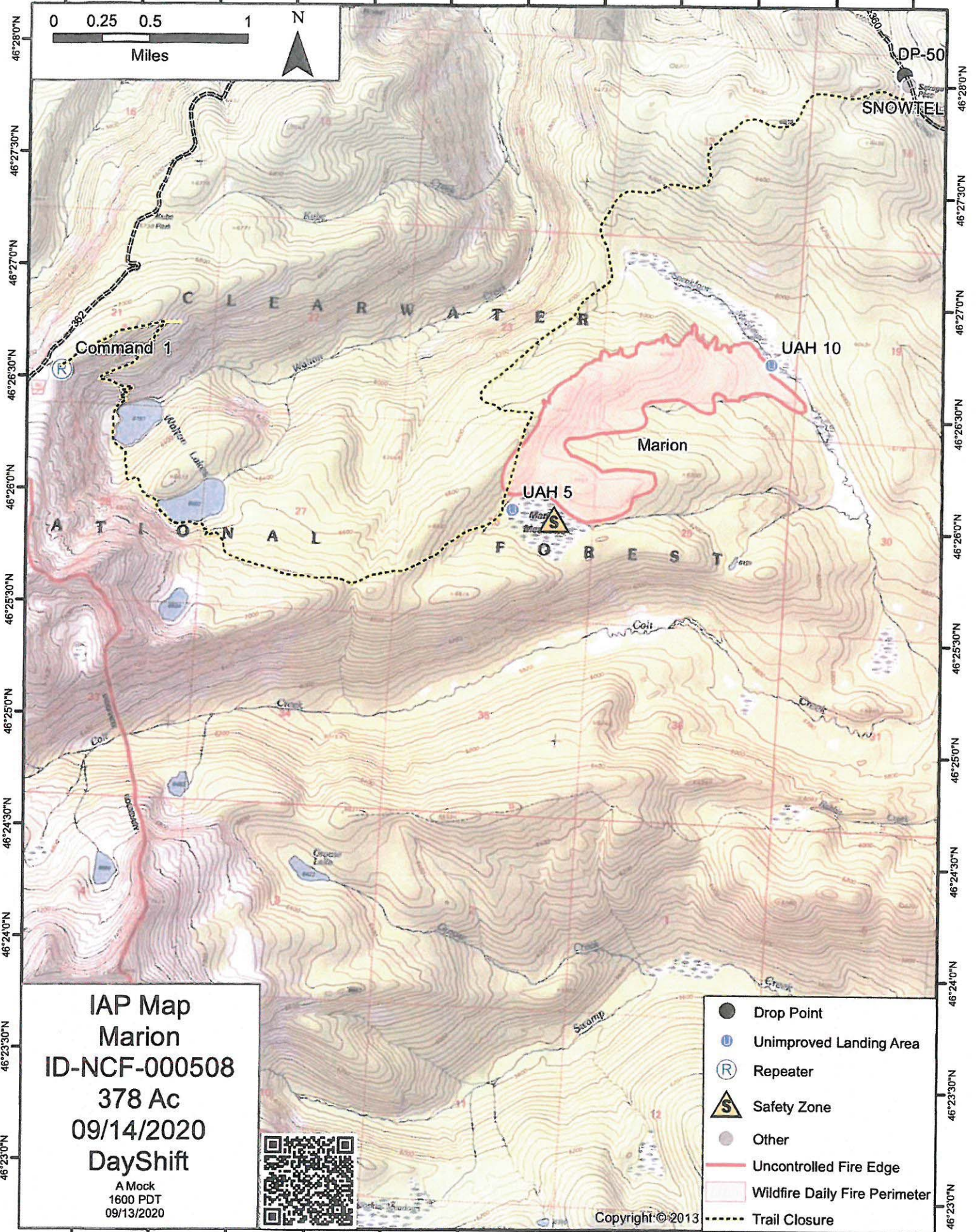
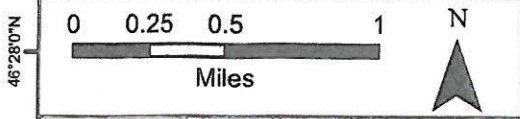
Example: P1NJD820 vs P1NJD821 override 0117

IAP Map
 Beaver
 ID-NCF-000552
 1464 Ac
 09/14/2020
 DayShift
 A Meck
 1900 PDT
 09/13/2020

	Repeater
	Camp
	Dip Site
	Helispot
	Other
	Division Break
	Drop Point
	Uncontrolled Fire Edge
	Line Break Completed
	Access or Improved Road
	Fire Break Planned or Incomplete
	Wildfire Daily Fire Perimeter
	Trail Closure
	Road Closure



114°43'30"W 114°43'0"W 114°42'30"W 114°42'0"W 114°41'30"W 114°41'0"W 114°40'30"W 114°40'0"W 114°39'30"W 114°39'0"W 114°38'30"W 114°38'0"W



IAP Map
Marion
ID-NCF-000508
378 Ac
09/14/2020
DayShift

A Mock
1600 PDT
09/13/2020



- Drop Point
- Unimproved Landing Area
- Repeater
- Safety Zone
- Other
- Uncontrolled Fire Edge
- Wildfire Daily Fire Perimeter
- Trail Closure

Copyright © 2013

114°43'0"W 114°42'30"W 114°42'0"W 114°41'30"W 114°41'0"W 114°40'30"W 114°40'0"W 114°39'30"W 114°39'0"W 114°38'30"W 114°38'0"W 114°37'30"W

MEDICAL PLAN (ICS 206 WF)

Controlled Unclassified Information//Basic

Medical Incident Report

FOR A NON-EMERGENCY INCIDENT, WORK THROUGH CHAIN OF COMMAND TO REPORT AND TRANSPORT INJURED PERSONNEL AS NECESSARY.

FOR A MEDICAL EMERGENCY: IDENTIFY ON SCENE INCIDENT COMMANDER BY NAME AND POSITION AND ANNOUNCE "MEDICAL EMERGENCY" TO INITIATE RESPONSE FROM IMT COMMUNICATIONS/DISPATCH.

Use the following items to communicate situation to communications/dispatch.

1. CONTACT COMMUNICATIONS / DISPATCH (Verify correct frequency prior to starting report)

Ex: "Communications, Div. Alpha. Stand-by for Emergency Traffic."

2. INCIDENT STATUS: Provide incident summary (including number of patients) and command structure.

Ex: "Communications, I have a Red priority patient, unconscious, struck by a falling tree. Requesting air ambulance to Forest Road 1 at (Lat./Long.) This will be the Trout Meadow Medical, IC is TFLD Jones. EMT Smith is providing medical care."

Severity of Emergency / Transport Priority	<input type="checkbox"/> RED / PRIORITY 1 Life or limb threatening injury or illness. Evacuation need is IMMEDIATE <i>Ex: Unconscious, difficulty breathing, bleeding severely, 2° - 3° burns more than 4 palm sizes, heat stroke, disoriented.</i> <input type="checkbox"/> YELLOW / PRIORITY 2 Serious Injury or illness. Evacuation may be DELAYED if necessary. <i>Ex: Significant trauma, unable to walk, 2° - 3° burns not more than 1-3 palm sizes.</i> <input type="checkbox"/> GREEN / PRIORITY 3 Minor Injury or illness. Non-Emergency transport <i>Ex: Sprains, strains, minor heat-related illness.</i>	
Nature of Injury or Illness & Mechanism of Injury		Brief Summary of Injury or Illness <i>(Ex: Unconscious, Struck by Falling Tree)</i>
Transport Request		Air Ambulance / Short Haul/Hoist Ground Ambulance / Other
Patient Location		Descriptive Location & Lat. / Long. (WGS84)
Incident Name		Geographic Name + "Medical" <i>(Ex: Trout Meadow Medical)</i>
On-Scene Incident Commander		Name of on-scene IC of Incident within an Incident <i>(Ex: TFLD Jones)</i>
Patient Care		Name of Care Provider <i>(Ex: EMT Smith)</i>

3. INITIAL PATIENT ASSESSMENT: Complete this section for each patient as applicable (start with the most severe patient)

Patient Assessment: See IRPG page 106

Treatment:

4. TRANSPORT PLAN:

Evacuation Location (if different): *(Descriptive Location (drop point, intersection, etc.) or Lat. / Long.)* Patient's ETA to Evacuation Location:

Helispot / Extraction Site Size and Hazards:

5. ADDITIONAL RESOURCES / EQUIPMENT NEEDS:

Example: Paramedic/EMT, Crews, Immobilization Devices, AED, Oxygen, Trauma Bag, IV/Fluid(s), Splints, Rope rescue, Wheeled litter, HAZMAT, Extrication

6. COMMUNICATIONS: Identify State Air/Ground EMS Frequencies and Hospital Contacts as applicable

Function	Channel Name/Number	Receive (RX)	Tone/NAC *	Transmit (TX)	Tone/NAC *
COMMAND					
AIR-TO-GRND					
TACTICAL					

7. CONTINGENCY: Considerations: If primary options fail, what actions can be implemented in conjunction with primary evacuation method? Be thinking ahead.

8. ADDITIONAL INFORMATION: Updates/Changes, etc.

REMEMBER: Confirm ETA's of resources ordered. Act according to your level of training. Be Alert. Keep Calm. Think Clearly. Act Decisively.