

Beaver Fire

ID-NCF-000552

P1NJD8 (0117)

710044

Marion Fire

ID-NCF-000508

P1EKT520 (0117)



Common Denominators on Tragedy Fires

On relatively small fires or deceptively quiet areas of large fires.

In relatively light fuels, such as grass, herbs and light brush.

When there is an unexpected shift in wind direction or wind speed.

When fire responds to topographic conditions and runs uphill.

Incident Action Plan

Tuesday

September 8 - 9, 2020

Day Operational Period 0700 - 1900

Night Operational Period 1800 - 0800

INCIDENT OBJECTIVES

1. Incident Name
Beaver Fire, Marion Fire

2. Date Prepared
09/07/2020

3. Time Prepared
2100

4. Objectives

High Value Assets and Resources to be Protected:

Public and first responder health from COVID-19; community of Powell and associated private inholdings/property; smoke sensitive communities, including Missoula and the Bitterroot valley; public and private timber lands.

Leader's Intent:

- Protect human life. Firefighter and public safety will be given the highest priority at all times.
- Minimize the exposure of the public and responders to transmission or infection from COVID-19 by following CDC, county and NPCNF measures relating to social distancing, masks and cleaning procedures.
- Establish and maintain information sharing networks with communities potentially impacted by smoke.
- Manage smoke, while providing for public safety, to provide for desirable air quality and visibility.
- Minimize fire impacts to Whitebark pine seed collection trees.
- Manage any portion of the fire located within a wilderness area using strategies and tactics that are commensurate with wilderness values.
- Take appropriate measures to reduce chances of noxious weed spread onto the forest, including weed wash of vehicles before entering the incident area and when demobilizing.
- Commit incident resources only where there is a high probability of meeting reasonable objectives or when the risk of injury or death can be mitigated.
- Maintain and foster relationships with users of public lands, landowners, agencies and local communities.
- Adhere to applicable work-rest guidelines to reduce fatigue and ensure that assigned fire-fighting personnel receive adequate rest.
- Maintain a workplace and atmosphere of mutual respect and free of any harassment. There will be no tolerance for any unethical, illegal drug or alcohol related incidents.
- Effectively manage costs commensurate with the high value assets and resources to be protected and risks..
- Efficiently demobilize resources in a manner that will ensure safe travel and "right-sizing" consistent with demobilization glidepath direction.

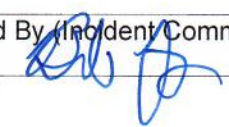
Operational Objectives:

The incident will be managed utilizing contain/confine and point protection strategies.

5. Prepared By (Planning Section Chief)
Will Bernard:



6. Approved By (Incident Commander)
Bob Fry:



ORGANIZATION ASSIGNMENT LIST		9. Operations Section	
1. Incident Name Beaver Fire, Marion Fire		Chief-Line	Joe Brabender, Rich Cowger (t)
		Chief-Planning	Ron Naber, Danny Lemer (t)
		a. Divisions/Groups	
2. Date 09/08-09/20		3. Time Day: 0700 - 1900 Night: 1800 - 0800	
4. Operational Period: Day Shift/Night Shift		Division/Group	Alpha / Bravo Day Manny Mendoza, Jeff Barnes (t)
5. Incident Commander and staff		Division/Group	Alpha / Bravo Night Mike West
Incident Commander	Bob Fry	Division/Group	Zulu Monitored
Deputy IC	Jay Winfield, Paul Roose (t)	Division/Group	Road Group Danny Lemer
Safety Officers	Marvin Carpenter, Steve Wyatt, Dean Whitney (t)	b. Divisions/Groups	
Information Officer	Penny Bertram, Jill Cobb (v), Nick Holloway (t)	Marion Fire	
Liaison Officer	Lance Burns, Chris Grove		
6. Agency Representatives		Division/Group	Mike Kris George, Jacob Jeresek (t)
Agency	Name	Division/Group	
FS Agency Admin	Brandon Knaption, Ron Tipton (t)	Division/Group	
FS Fire Staff Officer	Kevin Pfister	Division/Group	
FS AFMO	Michael Wood	Division/Group	
		Division/Group	
7. Planning Section		c. Divisions/Groups	
Chief	Will Bernard	Division/Group	
Resources Unit	Jody Pettit	Division/Group	
Check In	Nolan Baldwin (t)	Division/Group	
Demobilization Unit	Joe Read	Division/Group	
Documentation	Danny Baggao	Division/Group	
Situation Unit	Chad Ramsay, Roger Jackson (v)	Division/Group	
GIS Specialist	Andrew Mock	d. Air Operations Branch	
Fire Behavior	Eric Trimble	Air Operations Branch Director	Sal Garcia
FS Resource Advisor	Rebecca Lloyd	Air Attack Supervisor	
IT Support	Ed Yeager	Air Support Supervisor	
		Helicopter Coordinator	
		Air Tanker Coordinator	
8. Logistics Section		10. Finance Section	
Chief	Tyler Rae	Chief	Dale Harrison, Amy Waring (t)
Facilities Unit		Time Unit Leader	
Supply Unit	Bryan Connelley	Cost Unit	Liz Behrends (t)
Ordering	Cindy Wharton	Personnel	Amy Erickson (t)
Communications Unit	Tom Robbins	Equipment	Lisa Hawdon
Medical Unit	Teri Miller, Melanie Miller (t)		
Food Unit		Prepared by (Resource Unit Leader) Jody Pettit	
Ground Support Unit			
Security Unit	Peter Pappas		

Beaver Fire Weather Forecast

Spot Forecast from the National Weather Service Missoula, MT
Forecast is based on start time of 0700 PDT on Sept 8, 2020
359 PM MDT 9/7/2020

DISCUSSION . . .

Overnight low temperatures for Tuesday morning will be cold and reach down to the mid 20's. Otherwise, Tuesday will be the start of a warming and drying trend. Expect relatively poor RH recoveries due to a strengthening thermal belt starting Tuesday night.

TUESDAY . . .

- * Sky/Weather.....Sunny. Widespread frost early in the morning.
- * CWR (> 0.10 Inch)...0%.
- * LAL.....1.
- * Max Temperature.....55-60°F.
- * Min Humidity.....22-27%.
- * Wind (20 ft).....East 5 mph becoming NE 6-12 mph by afternoon.
- * Haines Index.....4 low.

TUESDAY NIGHT . . .

- * Sky/Weather.....Clear.
- * CWR (> 0.10 Inch)...0 percent.
- * LAL.....1.
- * Min Temperature.....33-38°F.
- * Max Humidity.....52-57%.
- * Wind (20 ft).....NE 5 mph becoming variable 2-5 mph by evening.

WEDNESDAY . . .

- * Sky/Weather.....Sunny.
- * CWR (> 0.10 Inch)...0%.
- * LAL.....1.
- * Max Temperature.....65-70°F.
- * Min Humidity.....26-31%.
- * Wind (20 ft).....East 5 mph by afternoon.
- * Haines Index.....3 very low.

WEDNESDAY NIGHT . . .

- * Sky/Weather.....Mostly Clear.
- * CWR (> 0.10 Inch)...0%.
- * LAL.....1.
- * Min Temperature.....38-42°F.
- * Max Humidity.....49-54%.
- * Wind (20 ft).....East 8 mph becoming variable 2-5 mph by evening.

THURSDAY...Clear. Lows 40-45. Highs 65-70. Terrain driven winds to 5 mph.

FRIDAY...Clear, Lows 40-45. Highs 65-70. Terrain driven winds to 10 mph.

SATURDAY...Clear. Lows 45-50. Highs 75-80. SW winds 5-10 mph

SUNDAY...Clear. Lows 45-50. Highs 75-80.

FIRE BEHAVIOR FORECAST

FORECAST NUMBER: 7	INCIDENT TYPE: Wildfire
FIRE NAME: Beaver/Marion	OPERATIONAL PERIOD: Sept 8, 2020 Tuesday
DATE ISSUED: Sept 7, 2020	TIME ISSUED: 1800
UNIT: ID-Clear-Nez	PREPARED BY: Eric Trimble – FBAN

INPUTS

WEATHER SUMMARY:

Sky Weather: Sunny.
CWR (>0.10"): 0%
Max Temps: 55-60°
Min RH: 22-27% **Haines:** 4 (low). **LAL:** 1
Winds: East 5 mph becoming NE 6-12 mph by afternoon.

FUELS:

Beaver: Mature, mixed conifer forest dominated by DF, LPP, WL, SAF, and ES; with WRC on north aspects/valley bottoms. Relatively heavy snag component. Live hardwood fuels are largely green and will discourage surface fire spread. Herbaceous fuels on the more exposed slopes are starting to cure and should support limited surface fire activity.

Marion: Mature SAF, ES and LPP with SAF/ES regen/ladder fuels. Relatively high dead/down component.

Fine Fuels: 6-8%; 10-hr: 20%; 100hr: 12%; 1000hr: 13%

ERC: 70th percentile

OUTPUTS - FIRE BEHAVIOR

GENERAL:

Expect active surface fire activity within the jackpots of down/woody material and dense pockets of conifer regen ladder fuels. Spruce/sub-alpine fir, multi-story stands will favor single to small group-tree torching. Live hardwood fuels will generally discourage fire growth.

Backing/flanking spread 1-2 ft/min with flames 2-4 ft. Head fire with possible 4-6 ft. flame lengths and 5-10 ft/min rates of spread, higher with torching. Although Monday's precipitation did not penetrate closed canopy stands spotting is not expected to be a concern due to low temps and high fuel moistures in receptive fuels.

Probability of Ignition (PIG): 40-50% during the peak of the burning period.

SPECIFIC:

Beaver Fire – Expect active surface fire with single to small group-tree torching, backing and flanking. Perimeter growth potential to the W-SW, north of the Div A/Z break.


Marion Fire – Expect some surface fire activity with single tree torching, backing and flanking. Perimeter growth potential to the W-SW on the ridge north of Marion Meadows.

AIR OPERATIONS: Expect good visibility with light turbulence.

SAFETY: Maintain good situational awareness with the transition to warmer, dryer conditions. Conditions favorable for increased surface and crown fire activity as the weather returns to seasonal norms.

ASSIGNMENT LIST		1. Branch	2. Division/Group			
			Alpha / Bravo Day			
3. Incident Name Beaver Fire		4. Operational Period Date: 09/08/20		Day 0700 - 1900 Night 1800 - 0800		
5. Operations Personnel						
Operations Chief	Joe Brabender, Rich Cowger (t)		Division/Group Supervisor		Manny Mendoza, Jeff Barnes (t)	
Branch Director			Air Support Group Supervisor		Sal Garcia	
6. Resources Assigned This Period						
Strike Team/Task Force/ Resource Designator	Last Shift	Leader	No. Pers.	Trans. Needed	Drop Off PT./Time	Pick Up PT./Time
O-12 TFLD	9/18	Jacob Cafferty	1	N		
O-15 TFLD (t)	9/17	Clint Dean	1	N		
C-5 TY2IA Palouse	9/18	Cody Cline, Chad Borg (t)	18	N		
E-44 ENG6 Peanut Pie	9/19	James Maher	3	N		
E-46 WTS2 Smith20	9/17	Stephen Roach	1	N		
E-47 WTS2 Andrews Fire Service	9/17	Brian Palmer	1	N		
O-17 Timber Specialist	9/14	Jake Jararczeski	1	N		
O-18 Timber Specialist	9/14	Ray Craig	1	N		
O-16 HEQB	9/17	Robbie Easley	1	N		
O-33 HEQB (t)	9/18	Andrew Brown	1	N		
E-50 EXCA2 Cox	9/20	Marvin Gregg	2	N		
E-66 EXCA2 Madden	9/20	Pat Madden	1	N		
E-55 MAST Downing	9/19	Wes Renne	2	N		
E-56 FEL1 Downing	9/19	Aaron Downing	2	N		
E-57 FEL1 Welch Brothers	9/19	Jim Bonnalie	2	N		
E-59 SKD1 Welch Brothers	9/19	Craig Welch	2	N		
E-65 SKD1 Bonnalie	9/19	Jim Bonnalie	1	N		
E-39 AMBU AMR NW	9/17	Patterson, Amback	2	N		
7. Control Operations						
<p>Task: Brush and open existing road systems from Round Top RAWs site to the West and South to tie into the 368 Rd. Create fuel break from 368 Rd. to tie in with existing fuel break. Scout for additional opportunities to the West of the fire.</p> <p>Purpose: Create and improve containment lines to keep fire South and East of private property and the Round Top RAWs.</p> <p>End State: Fuel break has been completed from the 368 Rd. to Round Top RAWs; fire has been kept off of private property.</p>						
8. Special Instructions						
<p>Coordinate with Beaver Ridge Lookout for fire activity information. LCES shall be in place prior to engaging fire. All COVID-19 mitigation protocols shall be followed. Identify potential medivac locations.</p>						
9. Division/Group Communication Summary						
Function	Frequency - RX	Frequency - TX	Tone	Channel	Comments	
TAC 6	168.0500 N	168.0500 N	136.5	6		
A/G	167.1250 N	167.1250 N		15		
CMD 1	170.0000 N	166.6750 N	136.5	1		
CMD 2	170.6875 N	166.5750 N	136.5	2		
Prepared by (RESL) Jody Pettit		Approved by (PSC2) Will Bernard		Date 09/07/20		Time 2000

ASSIGNMENT LIST		1. Branch	2. Division/Group			
			Alpha / Bravo Night			
3. Incident Name		4. Operational Period		Day 0700 - 1900		
Beaver Fire		Date: 09/08-09/20		Night 1800 - 0800		
5. Operations Personnel						
Operations Chief	Joe Brabender, Rich Cowger (t)		Division/Group Supervisor	Mike West		
Branch Director			Air Support Group Supervisor	Sal Garcia		
6. Resources Assigned This Period						
Strike Team/Task Force/ Resource Designator	Last Shift	Leader	No. Pers.	Trans. Needed	Drop Off PT./Time	Pick Up PT./Time
O-31 TFLD	9/18	Chad Daugherty	1	N		
O-32 TFLD(t)	9/19	William Mack	1	N		
E-45 ENG6 Firebrand	9/19	Lauren Bendel	3	N		
O-27 HEQB (t)	9/18	Andrew Saralecos	1	N		
E-38 FORW Hester	9/19	Joe Hester	2	N		
E-40 Log Truck Anderson	9/19	Brett Flodin	1	N		
E-41 Log Truck Anderson	9/19	Kelly Glessner	1	N		
E-42 Log Truck Anderson	9/19	Casey Nelson	1	N		
E-49 ECXA2 Flash Excavating	9/20	Gordon Eckel	2	N		
E-53 Log Loader Cox	9/19	Bill Hazelton	2	N		
E-54 Log Loader Cox	9/19	Richard Cox	2	N		
E-58 SKD1 Downing	9/19	Lonnie Williams	2	N		
E-63 Log Truck Nez Tribe	9/20	Jeremy Littlefield	1	N		
E-64 SKD1 Bonnalie	9/19	Clint Mader	2	N		
O-35 SOFR	9/19	Dennis Crawford	1	N		
O-11 EMTF	9/17	Jessica Tullus	1	N		
O-22 EMTF	9/19	Alyse Gutierrez	1	N		
7. Control Operations						
<p>Task: Move log decks to DP1. Monitor fire.</p> <p>Purpose: Complete the fuel break. Ensure safety of log trucks and fire fighters.</p> <p>End State: Log decks have been moved to DP1. Everyone is safe.</p>						
8. Special Instructions						
<p>Coordinate with Beaver Ridge Lookout for fire activity information.</p> <p>LCES shall be in place prior to engaging fire.</p> <p>All COVID-19 mitigation protocols shall be followed.</p> <p>Identify potential medivac locations.</p>						
9. Division/Group Communication Summary						
Function	Frequency - RX	Frequency - TX	Tone	Channel	Comments	
TAC 7	168.2000 N	168.2000 N	136.5	7		
A/G	167.1250 N	167.1250 N		15		
CMD 1	170.0000 N	166.6750 N	136.5	1		
CMD 2	170.6875 N	166.5750 N	136.5	2		
Prepared by (RESL)		Approved by (PSC2)		Date	Time	
Jody Pettit		Will Bernard		09/07/20	2000	

INCIDENT RADIO COMMUNICATIONS PLAN		Incident Name BEAVER FIRE				Date/Time Prepared 9/7/2020 1600	Operational Period Date/Time 9/8/2020 0700 – 9/9/2020 0700		
Ch #	Function	Channel Name	Assignment	RX Freq N or W	RX Tone	TX Freq N or W	Tx Tone	Mode	Remarks
1	Repeater	Command 1	All Resources	170.0000 N	136.5	166.6750 N	136.5	A	To Communications
2	Repeater	Command 2	All Resources	170.6875 N	136.5	166.5750 N	136.5	A	To Communications
3									
4									
5									
6	Tactical	TAC 6	DIV A	168.0500 N	136.5	168.0500 N	136.5	A	NIFC Tac
7	Tactical	TAC 7	DIV B	168.2000 N	136.5	168.2000 N	136.5	A	NIFC Tac
8	Tactical	TAC 8	DIV Z	168.6000 N	136.5	168.6000 N	136.5	A	NIFC Tac
9	Tactical	Tac 9	DIV M	166.7250 N	136.5	166.7250 N	136.5	A	NIFC Tac
10	Tactical	TAC 10	Roads	166.7750 N	136.5	166.7750 N	136.5	A	NIFC Tac
11	Tactical	Tac 11	Logging	168.2500 N	136.5	168.2500 N	136.5	A	NIFC Tac
12	Local	E Beaver Ridge	I/A	171.5750 N		166.2625 N	100.0	A	NFS Repeater
13	Local	N Rocky Ridge	I/A	171.5750 N		166.2625 N	162.2	A	NFS Repeater
14									
15	Air/Ground	A/G Primary	All	167.1250 N		167.1250 N		A	NIFC A/G Primary
16	Air Guard	Air Guard	All	168.6250 N		168.6250 N	110.9	A	Emergency
Prepared By (Communications Unit)				Incident Location		Powell ID			
Thomas Robbins COML 									

The convention calls for frequency lists to show four digits after the decimal place, followed by either an "N" or a "W", depending on whether the frequency is narrow or wide band. Mode refers to either "A" or "D" indicating analog or digital (e.g. Project 25) or "M" indicating mixed mode. All channels are shown as if programmed in a control station, mobile or portable radio. Repeater and base stations must be programmed with the Rx and Tx reversed.

AIR OPERATIONS SUMMARY (ICS 220)

1. Incident Name: Beaver ID-NCF-000552 Marion ID-NCF-000508	2. Operational Period: Date From: Sept. 8, 2020 Date To: Sept. 8, 2020 Time From: 0730 Time To: 2030	3. Sunrise: 0616 Sunset: 1907																									
4. Remarks (safety notes, hazards, air operations special equipment, etc.): * Aviation requirement will be reviewed and applied where needed Consider the safety and risk analysis while planning and ordering A/C * A/C availability will be shared as needed, unless assigned to the specific Incident * A/C request will be approved and ordered accordingly - dispatch		5. Ready Alert Aircraft: Medivac: 1HQ Short Haul Helicopter New Incident: Two Bear Air-(Hoist @ +) 8. Frequencies: <table style="width: 100%; border-collapse: collapse;"> <tr> <td style="width: 50%;"></td> <td style="width: 25%; text-align: center;">AM</td> <td style="width: 25%; text-align: center;">FM</td> </tr> <tr> <td>Air/Air Fixed-Wing</td> <td></td> <td></td> </tr> <tr> <td>Air/Air Rotary-Wing – Flight Following</td> <td style="text-align: center;">127.0750 A-10</td> <td></td> </tr> <tr> <td>Air/Ground</td> <td style="text-align: center;">167.1250 A-9</td> <td></td> </tr> <tr> <td>Command</td> <td style="text-align: center;">Refer to the Comm</td> <td style="text-align: center;">Plan</td> </tr> <tr> <td>Deck Coordinator</td> <td></td> <td></td> </tr> <tr> <td>Take-Off & Landing Coordinator</td> <td></td> <td></td> </tr> <tr> <td>Air Guard</td> <td style="text-align: center;">168.6250</td> <td></td> </tr> </table>			AM	FM	Air/Air Fixed-Wing			Air/Air Rotary-Wing – Flight Following	127.0750 A-10		Air/Ground	167.1250 A-9		Command	Refer to the Comm	Plan	Deck Coordinator			Take-Off & Landing Coordinator			Air Guard	168.6250	
	AM	FM																									
Air/Air Fixed-Wing																											
Air/Air Rotary-Wing – Flight Following	127.0750 A-10																										
Air/Ground	167.1250 A-9																										
Command	Refer to the Comm	Plan																									
Deck Coordinator																											
Take-Off & Landing Coordinator																											
Air Guard	168.6250																										
10. Helicopters (use additional sheets as necessary):																											
FAA N#	Category/Kind/Type	Make/Model	Base	Available	Start	Remarks																					
Via Dispatch	A/C availability	Not assigned to Inc.																									
H-974H	T3	Bell 407	For Planning	Available Local	0800	Order through dispatch																					
HB-116	T1	Kaman Aero K-1200	Located at	Available Local	0800	Order through dispatch																					
HG-562AJ	T1	CH-47D	Grangeville - Airport	Available Local	0800	Order through dispatch																					
ASSIGNED TO THE	BEAVER INC.																										
H-16920	T2		Powell R.S.	Enroute - Billings	1400	Standard																					
					On travel status am																						
11. Prepared by: Name: Sal Garcia				Position/Title: AOBD Signature: _____																							
ICS 220, Page 1				Date/Time: 9/7/2020 - 1800																							

SAFETY MESSAGE



It takes 4480 heart beats by two people to make a child.

It takes 3,456,000 for that child to turn 1 year old.

It takes 746,496,000 heart beats for that child to reach voting age.

It takes 2,571,264,000 heart beats for that child to reach Social Security age.

It takes one heart beat to end that life because of a careless act.

Finish this incident strong, stay focused and continue adding heart beats to your total.

- **Complacency** Safety has many enemies. One being complacency. It gives you a false sense of security, that everything is ok. A false sense of security does not go well in any job, but it could be most dangerous in firefighting where things are constantly changing. The environment you are working in today could be completely different environment than the one you worked in yesterday.

In constantly changing environments, extra vigilance is needed to avoid the trap of complacency. Complacency can be a killer in firefighting. Often a firefighter does not realize how complacent they have become until an accident or close call occurs. Avoid complacency by avoiding routines through changing up daily tasks, have oversight through the chain of command, correct behaviors through mentoring/coaching folks to change bad habits and practices, and routinely brief and remind your co-workers of risks and hazards.



We are seeing a lot of complacency on wearing masks.

If you are not socially distanced you must wear a mask. It does not matter what race, sex, age, sexual orientation, education level, or political affiliation you are.

You must wear a mask when in contact with people under a distance of 6 feet inside or outside.

- **Wear your mask properly.**
 - Over the nose
 - Cover your mouth
 - Under your chin

**Safety Team: Marvin Carpenter, Steve Wyatt, Dean Whitney (T), Dennis Crawford
And Each of YOU!**

MEDICAL PLAN (ICS 206 WF)

1. Incident/ project name and address:	2. Operational Period: Date/Time
Beaver Powell Idaho	9-8-20 0700-1900

3. Ambulance Services			
Name	Complete address	Phone & EMS Frequency	ALS ✓
Missoula Ambulance Service INC	2600 Palmer St Missoula, MT 59808	406-549-2325	X
Powell QRU	Powell Ranger Station	911	
AMR Ambulance	Division A	Command	

4. Air Ambulance Services					
Name	Location/remarks	Phone & EMS Frequency	ALS ✓	hoist ✓	night ✓
Life Flight Network	Missoula, MT/Sand Point, ID/Butte	911 406-829-7070	X		
Alert Air Ambulance	Kalispell, MT	911 406-752-5111	X		X
Two Bear Air	Whitefish, MT	911 406-297-2121		X	X

5. Hospitals						
Name and Address	Phone	Level of care	Heli Pad ✓	If Helipad, Lat./Long. (DD mm.mmm') Datum WGS84	Travel time to hosp: min's Air Ground	
Eastern Idaho Regional Medical Center 3100 Channing Way Idaho Falls, ID 83404	208-529-6111	Trauma II Burn center	X	N 43 28' 17" W 111 59' 29.5"		285
St. Patrick Hospital 500 Broadway Missoula, MT	406-543-7271	Trauma II	X	N 46 52.524 W113 59.969		68
Community Medical Center 2827 Ft. Missoula Rd Missoula, MT	406-728-4100	Trauma III	X	N 46 50.909 W 114 02.865		64

6. Area Location Capability						
Branch, Div, Group	Aid Station Name; Responders	Equipment available	Emergency frequency	Ambulance ETA to site: min's Air Ground	Nearby Helispot &/or DP	Helispot &/or DP lat/long (DD mm.mmm') Datum WGS 84
Powell Ranger Station	MEDL/EMPF Teri Miller MEDL(t) Melanie Miller	ALS				
Division A/B NIGHT	Jessica Tullis Alyse Gutierrez	EMTF EMPF				
Powell FOB/spike	Rosemary Meyers	AEMT				
Division A	Jerry Patterson 509-999-0457 Josh Amback 509-688-7593	EMPF EMTF				

7. Notes, special procedures: Use Medical Incident Report for medical response and Medical Incident Pre-Planning worksheet for briefing. Medical Emergencies should be reported in accordance with Lolo/Kootenai Forest procedures.

8. Prepared by (Medical Unit Leader)	9. Date/Time	10. Reviewed by (Safety Officer)	11. Date/Time
Teri Miller	9/7/20 1700	 Steve Wyatt	9/7/20 1700

INCIDENT MEDICAL AID STATIONS

MEDICAL AID STATION	LOCATION	ISOLATION?	
		YES	NO
Covid precheck in screening	Base camp/spike		X
Daily screening-road check	Powell Ranger Station	X	
Daily self checks	ICP		X

LOCAL SUPPORT

A. OFF-SITE ISOLATION FACILITIES

NAME	LOCATION	PHONE	MEDICAL	
			YES	NO
Hotels in Missoula, MT	Contact SWZ COVID logistics	406-540-2965		X

COVID SCREENING PROCEDURES

ICP	BASE CAMP SPIKE	MEDICAL UNIT-Powell Ranger Stations	medical	
			ALS	BLS
		Covid precheck screening prior to checking in to fire Daily covid self check screening for all modules		X
		Daily covid screening prior to briefing Cold/warm/hot medical units present (on site isolation present)	X	

TESTING FACILITIES

NAME	ADDRESS	Apointment required		Phone	Days operation		Hours operation	
		Yes	No		Work day	Week end	WD	WE
Community Medical Center Rapid tes outpatient lab	2827 Fort Missoula rd Missoula MT	X		406-327-4378	M-F	Sat	0630 1730	0830 1330
Missoula City-county Health depart	4025 flynn lane Missoula MT	X		406-258-4770	M-F	NA	0900 1600	NA
Clearwater Valley Hospital Orfino, ID	301 Cedar ST Orfino, Id		X	hospital 208-476-4555 Lab 208-476-8035	M-F	Sat	0900 1700	0900 1700

COVID-19 PROCEDURES

Field Screenings-self check screening. Postive Symptoms? Isolate patient, notify MEDL follow instuctions given.
First aid station Screening. Postive syptoms? Isolate patient Notify MEDL, follow instructions

Notes: Isolation can take place in a vehicle short term or at Medical unit. Vehicle to be completely disinfected afterward before use. MEDL can assist contractors with Information. Expectations that Module of 1 concepts will be followed. See list of Covid expectations given to all resources upon checkin and follow. Nearest/reccomended testing is at Community Medical Center rapid 2 hour results.

ASSIGNMENT-SPECIFIC MEDICAL EMERGENCY ACTION PLAN

Pre-Planning for today's assignment

What are the likely hazards that could cause injuries? What kind of severe injuries?		
Who is the likely in-charge DIVS or overhead for an emergency in your assigned area today? (i.e. "Division Zulu")		
Who are the Medical personnel assigned to your part of the incident? What are their capabilities?		
Other Emergency Responders: fire dept., crash rescue, ambulance?		
Communications: Command channel, Air to Ground, Medical helicopters, local rescue/medical?		
Transportation methods available	Ground vehicle, drop point, coordinates, travel route?	
	Aircraft I.D, Helispot names, coordinates? Hoist capable, internal transport	
	Other available methods - contingency	
Most likely workforce for evacuation		

Response checklist

Who takes charge?

- DIVS or designated Overhead manages the overall scene and evacuation process.
- Medical personnel and emergency responders manage patients and assist in rescue/extrication.
- OPS and IC make command decisions so the emergency can be given full attention and management. They continue to manage ongoing incident operations.

Response sequence:

- First, secure the scene and protect responders and patients from further injury. Render first aid.
- Clear the Command channel for "Emergency Traffic only" if this is a critical emergency. If not, inform Communications of non-critical-emergency status and use normal communications.
- Contact closest Medical personnel and DIVS or designated Overhead for response.

Information for Communications: Medical Incident Report – See last page of IAP and IRPG pages 116 and 119.

Helicopter Extracation Operations: See IRPG pages 116 and 117.

Severe Weather: In the event of forecasted severe weather, implement Incident Severe Weather Plan.

Incident Within Incident: Upon arriving at the incident, all overhead should obtain and review the team's Incident Within Incident Plan.

Information Message

“A picture is worth a thousand words”

1. **Public Information is seeking photos and videos** for Inciweb, social media, and other information products. Photos and videos draw attention and help tell the story of the fire. The photos and videos that we have obtained from personnel in the field have gotten a lot of traction on social media.

We are looking for anything of interest that could be related to the Beaver (or Marion) Fire. Photos that show the hard work being done on the fire will really help the public understand what the team is doing and the need for this effort. Crews working, equipment, and air operations, mixed in with photos of the fire itself really work well.

How to get your photos to Information:

- a. Transfer photos and videos to whomever attends the 0700 Operational Period Briefing so they can provide them directly to the PIO at the meeting.
- b. Email them to 2020.beaver@firenet.gov or give to someone with internet access to send.

Please include any relevant information that may help put the photo in context.

2. A **Lost and Found** box is located inside the Supply Unit yurt.
3. People wishing to send **mail** should drop it off within the Supply Unit yurt.

BEAVER FIRE - MARION FIRE

Telephone List

Last Edited: 09/07/20 @ 1730

IC	BOB FRY	406-431-0102
DEPUTY IC	JAY WINFIELD	208-993-0768
IC (T)	PAUL ROOSE	406-640-1337
LIAISON	CHRIS GROVE	406-381-7600
INFORMATION	PENNY BERTRAM	406-239-3970
OPERATIONS PLANNING	RON NABER	406-640-1614
OPERATIONS PLANNING (T)	DANNY LEMER	
OPERATIONS - LINE	JOE BRABENDER	406-691-0369
OPERATIONS - LINE (T)	RICH COWGER (T)	406-321-1180
SAFETY	MARVIN CARPENTER	406-594-5728
SAFETY	STEVE WYATT	406-437-8386
SAFETY (T)	DEAN WHITNEY	208-755-5956
PLANNING	WILL BERNARD	919-619-1408
RESOURCES	JODY PETTIT	208-290-8840
DEMOBILIZATION	JOE READ	406-253-1130
CHECK IN	NOLAN BALDWIN	406-396-0074
DOCUMENTATION	DAN BAGGAO	575-910-7179
SITUATION	CHAD RAMSAY	208-290-2253
ITSS	ED YEAGER	818-360-2519
PLANS OFFICE - POWELL		208-942-3123
		208-942-3133
FINANCE	DALE HARRISON	715-499-1457
FINANCE (T)	AMY WARING	406-579-5041
COMP/CLAIMS	AMY ERICKSON	406-207-3516
LOGISTICS	TYLER RAE	406-425-1038
BASE CAMP MGR	IAN GARTHWAIT	202-272-5020
ORDERING	CINDY WHARTON	423-341-1243
SECURITY MGR	PETER PAPPAS	319-333-8877
COMMUNICATIONS	TOM ROBBINS	406-698-7500
COMMUNICATIONS	BOB PEARSON	949-874-0586
MEDICAL	TERI MILLER	406-544-3070
MEDICAL (T)	MELANIE MILLER	406-249-4700

HOW TO SUBMIT YOUR TIME

Resources have 3 options

1. Fill out your CTR/Shift Ticket and have your supervisor sign. Place in box provided at morning briefing.
2. Fill out your CTR/Shift Ticket, have your supervisor sign, take a picture of it and email to Finance. On subject line put your: Last name (if CTR) or Contractor name (if Shift Ticket), and the word, Time. Email to: lisa_hawdon@firenet.gov
3. Fill out a fillable CTR/Shift Ticket, email it to your supervisor to sign and your supervisor emails it to Finance. On subject line put: Last name (if CTR) or Contractor name (if Shift Ticket), and the word, Time. Email to: lisa_hawdon@firenet.gov

If you would like a fillable CTR/Shift Ticket, email: lisa_hawdon@firenet.gov
Subject: Fillable Form. Within body message, state what form you would like and we will reply back to you with the electronic form.

If you are with the Montana DNRC, same as above, and state whether you would like the fillable Emergency Personnel & Equipment Shift Ticket (Combined form) or would like the individual CTR/Shift Ticket.

Fillable = Electronic

Please include your cell phone number in remarks

Note: Ensure your CTR or Shift ticket has a Supervisor's signature and show meal breaks.

Please do not wait to turn in your time. Please submit asap. We never know when resources could be moved to a higher priority fire and that will really slow down the reassignment process especially in this remote environment.

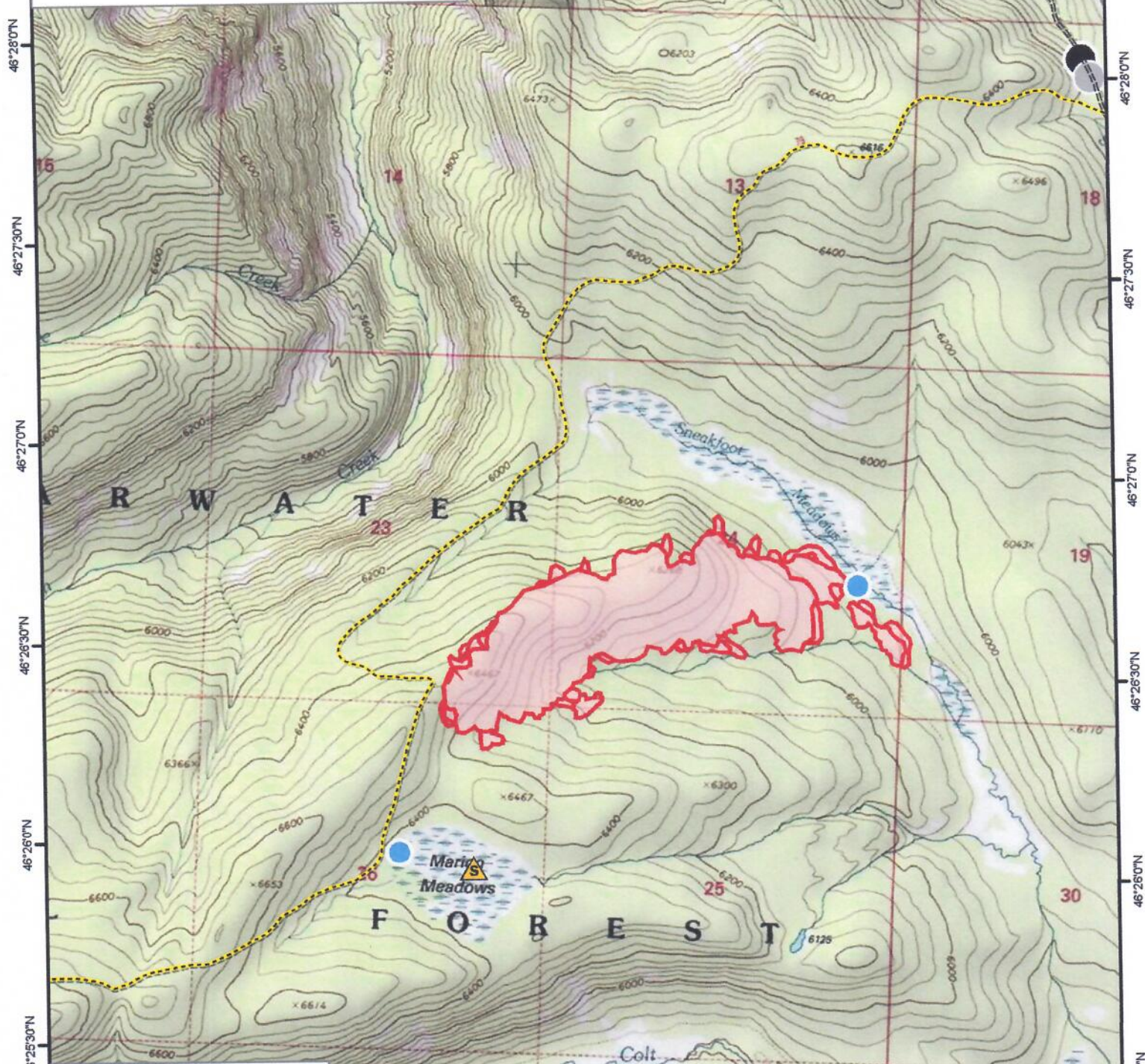
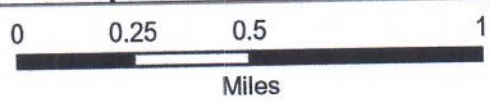
First source of supply is Cache, shaded blocks indicate items available thru Northern Rockies Cache. Items requiring an approved Property Loss and Damage form are in a separate list at the bottom.

PART	034/341	360/MS360	MS361	MS362	038/381	044/MS440	MS441	460/MS461	MS462	0640/650	MS660	MS680
Spark Plug (NFES# 000344)	Bosch WSR6F NGK BPMR7A Champion RC16Y	Bosch WSR6F NGK BPMR7A Champion RC16Y	Bosch WSR6F NGK BPMR7A Champion RC16Y	Bosch WSR6F NGK BPMR7A Champion RC16Y	Bosch WSR6F NGK BPMR7A Champion RC16Y	Bosch WSR6F NGK BPMR7A Champion RC16Y	Bosch WSR6F NGK BPMR7A Champion RC16Y	Bosch WSR6F NGK BPMR7A Champion RC16Y	Bosch USR7AC NGK CWR6H	Bosch WSR6F NGK BPMR7A Champion RC16Y	Bosch WSR6F NGK BPMR7A Champion RC16Y	Bosch WSR6F NGK BPMR7A Champion RC16Y
Needle Cage Bearing (NFES# 066565)	9512-933-2380	9512-933-2380	9512-933-2380	9512-933-2380	9512-933-2380	9512-933-2380	9512-933-2380	9512-933-2380	9512-933-2380	9512-933-2382	9512-933-2382	9512-933-3170
Timing Washer for Rim Sprocket - Lip (NFES# 066517)	0000-958-1022	0000-958-1032	0000-958-1032	0000-958-1032	0000-958-1231	0000-958-1032	0000-958-1032	0000-958-1032	0000-958-1032	0000-958-1032	0000-958-1032	0000-958-1236
Oil Filter	9460-624-0801	9460-624-0801	9460-624-0801	9460-624-0801	9460-624-1001	9460-624-0801	9460-624-0801	9460-624-0801	9460-624-0801	9460-624-0801	9460-624-0801	9460-624-1001
Oil Filter	0000-350-3504	0000-350-3504	0000-350-3504	0000-350-3504	0000-350-3504	0000-350-3504	0000-350-3504	0000-350-3504	0000-350-3504	0000-350-3504	0000-350-3504	0000-350-3504
Oil Filter - HD (NFES# 066756)	1125-120-1626	1125-120-1612	1135-120-1600	1140-140-4402	1119-120-1611	0000-140-4402	0000-120-1654	0000-120-1654	1142-140-4402	0000-140-4402	0000-140-4402	0000-140-4402
Oil Filter - OEM	N/A	N/A	N/A	N/A	1119-120-1500	0000-141-0300	0000-141-0300	0000-141-0300	N/A	0000-141-0300	0000-141-0300	0000-141-0300
Oil Filter Nut (NFES# 06661)	0000-955-0801	0000-955-0801	0000-955-0801	0000-955-0801	0000-955-0801	0000-955-0801	0000-955-0801	0000-955-0801	0000-955-0803	0000-955-0801	0000-955-0801	0000-955-0903
Oil Filter Slide Plate	1122-664-1000	1122-664-1000	1122-664-1000	1122-664-1000	1119-664-1000	1128-664-1001	1138-664-1000	1128-664-1001	1128-664-1001	1128-664-1001	1128-664-1001	1124-664-1001
HL RAPID - Super (RS)												
Oil 3/8" PITCH - .050" GA - DR	3623-005-0072	3623-005-0072	3623-005-0072	3623-005-0072	3623-005-0072	3623-005-0072	3623-005-0072	3623-005-0072	3623-005-0072	3623-005-0072	3623-005-0072	3623-005-0072
Oil - .72 DR	3623-005-0084	3623-005-0084	3623-005-0084	3623-005-0084	3623-005-0084	3623-005-0084	3623-005-0084	3623-005-0084	3623-005-0084	3623-005-0084	3623-005-0084	3623-005-0084
Oil - .84 DR (NFES# 006500)	3623-005-0091	3623-005-0091	3623-005-0091	3623-005-0091	3623-005-0091	3623-005-0091	3623-005-0091	3623-005-0091	3623-005-0091	3623-005-0091	3623-005-0091	3623-005-0091
Oil - .91 DR	N/A	N/A	N/A	N/A	N/A	N/A	N/A	N/A	N/A	N/A	N/A	N/A
Oil - .105 DR	N/A	N/A	N/A	N/A	N/A	N/A	N/A	N/A	N/A	N/A	N/A	N/A
HL RAPID - Super - Full Skip (RSF)												
Oil 3/8" PITCH - .050" GA - DR	3676-005-0072	3676-005-0072	3676-005-0072	3676-005-0072	3676-005-0072	3676-005-0072	3676-005-0072	3676-005-0072	3676-005-0072	3676-005-0072	3676-005-0072	3676-005-0072
Oil - .72 DR	N/A	3676-005-0084	3676-005-0084	3676-005-0084	3676-005-0084	3676-005-0084	3676-005-0084	3676-005-0084	3676-005-0084	3676-005-0084	3676-005-0084	3676-005-0084
Oil - .84 DR	3676-005-0091	3676-005-0091	3676-005-0091	3676-005-0091	3676-005-0091	3676-005-0091	3676-005-0091	3676-005-0091	3676-005-0091	3676-005-0091	3676-005-0091	3676-005-0091
Oil - .91 DR	N/A	N/A	N/A	N/A	N/A	N/A	N/A	N/A	N/A	N/A	N/A	N/A
Oil - .105 DR	N/A	N/A	N/A	N/A	N/A	N/A	N/A	N/A	N/A	N/A	N/A	N/A
Oil: Quantity - Gallon	NFES # 1880											
Oil: Quantity - Quart	NFES # 1869											
Oil: Quantity - Quart	NFES # 0341											

Following parts require an approved Property Loss & Damage form prior to ordering:

de Bars - 3/8" - .050" GA (STIHL LLOMATIC - ES)	3003-000-8822	3003-000-8822	3003-000-8822	3003-000-8822	3003-000-8822	3003-000-8822	3003-000-8822	3003-000-8822	3003-000-8822	3003-000-8822	3003-000-8822	3003-000-8822
(NFES# 066584)	N/A	3003-000-8830	3003-000-8830	3003-000-8830	3003-000-8830	3003-000-8830	3003-000-8830	3003-000-8830	3003-000-8830	3003-000-8830	3003-000-8830	3003-000-8830
Sprocket Kit 3/8 - 7T	N/A	N/A	N/A	N/A	N/A	N/A	N/A	N/A	N/A	N/A	N/A	N/A
Order Sprocket Kit	1125-007-1040	1128-007-1000	1128-007-1000	1128-007-1000	1128-007-1000	1128-007-1000	1128-007-1000	1128-007-1000	1128-007-1000	1128-007-1000	1128-007-1000	1128-007-1000
Order Sprocket Kit	0000-642-1231	0000-642-1223	0000-642-1223	0000-642-1223	0000-642-1223	0000-642-1223	0000-642-1223	0000-642-1223	0000-642-1223	0000-642-1223	0000-642-1223	0000-642-1223
Sprocket Kit 3/8 - 8T	N/A	N/A	N/A	N/A	N/A	N/A	N/A	N/A	N/A	N/A	N/A	N/A
Order Sprocket Kit	1128-007-1001	1128-007-1001	1128-007-1001	1128-007-1001	1128-007-1001	1128-007-1001	1128-007-1001	1128-007-1001	1128-007-1001	1128-007-1001	1128-007-1001	1128-007-1001
Order Sprocket Kit	0000-642-1216	0000-642-1216	0000-642-1216	0000-642-1216	0000-642-1216	0000-642-1216	0000-642-1216	0000-642-1216	0000-642-1216	0000-642-1216	0000-642-1216	0000-642-1216
Sprocket 3/8 - 8T	1127-160-2050	1125-160-2005	1128-160-2004	1128-160-2004	1119-160-2000	1128-160-2010	1138-160-2010	1128-160-2004	1142-160-2000	1122-160-2005	1122-160-2002	1124-160-2005
Oil Adjuster Kit	1125-007-1036	1125-007-1021	1125-007-1021	1125-007-1021	1118-664-1600	1125-007-1021	1125-007-1021	1125-007-1021	1125-007-1021	1125-007-1021	1125-007-1021	1124-007-1008
Oil Strip	1121-648-6610	1121-648-6610	1121-648-6610	1121-648-6610	1120-664-1500	1121-648-6610	1121-648-6610	1121-648-6610	1121-648-6610	1121-648-6610	1121-648-6610	1121-648-6610
Order Rope W/handle	1128-190-3400	1128-190-3400	1128-190-3400	1128-190-3400	1128-190-3400	1128-190-3400	1128-190-3400	1128-190-3400	1128-190-3400	1128-190-3400	1128-190-3400	1128-190-3400
Order Gear (Oiler)	1125-640-7110	1125-640-7110	1128-640-7112	1128-640-7112	1119-642-1501	1128-640-7112	1128-640-7112	1128-640-7112	1128-640-7112	1122-640-7105	1122-640-7105	1124-640-7512
Oil Fold Boot	1125-141-2200	1125-141-2200	1135-141-2200	1140-140-2503	1119-140-2500	1128-141-2204	1138-140-2508	1128-141-2204	1142-141-2200	1122-141-2200	1122-141-2201	1124-141-2202

114°41'30"W 114°41'0"W 114°40'30"W 114°40'0"W 114°39'30"W 114°39'0"W 114°38'30"W 114°38'0"W



46°28'0"N
46°27'30"N
46°27'0"N
46°26'30"N
46°26'0"N
46°25'30"N
46°25'0"N

46°28'0"N
46°27'30"N
46°27'0"N
46°26'30"N
46°26'0"N
46°25'30"N
46°25'0"N

IAP Map
Marion
ID-NCF-000508
220 Ac
09/08/2020
DayShift
A Mock
1430 PDT
09/07/2020



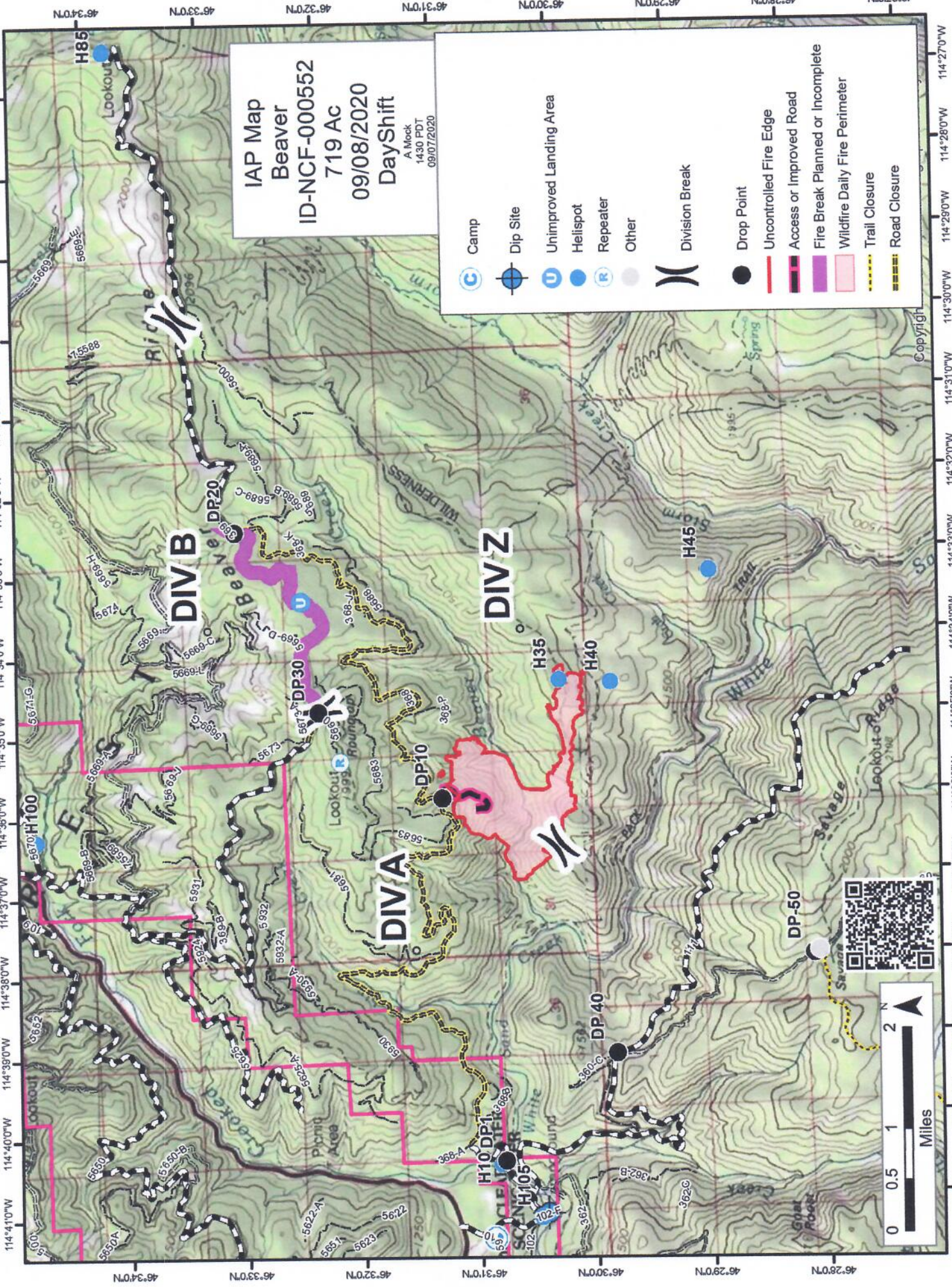
- Drop Point
- Helispot
- Safety Zone
- Other
- Uncontrolled Fire Edge
- Wildfire Daily Fire Perimeter
- Trail Closure

Copyright © 2013

114°41'30"W 114°41'0"W 114°40'30"W 114°40'0"W 114°39'30"W 114°39'0"W 114°38'30"W 114°38'0"W

IAP Map
 Beaver
 ID-NCF-000552
 719 AC
 09/08/2020
 DayShift
 A Mock
 1430 PDT
 09/07/2020

	Camp
	Dip Site
	Unimproved Landing Area
	Helispot
	Repeater
	Other
	Division Break
	Drop Point
	Uncontrolled Fire Edge
	Access or Improved Road
	Fire Break Planned or Incomplete
	Wildfire Daily Fire Perimeter
	Trail Closure
	Road Closure

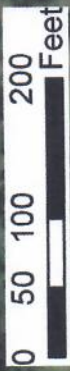


Copyright

114°41.5' W









114041 51W

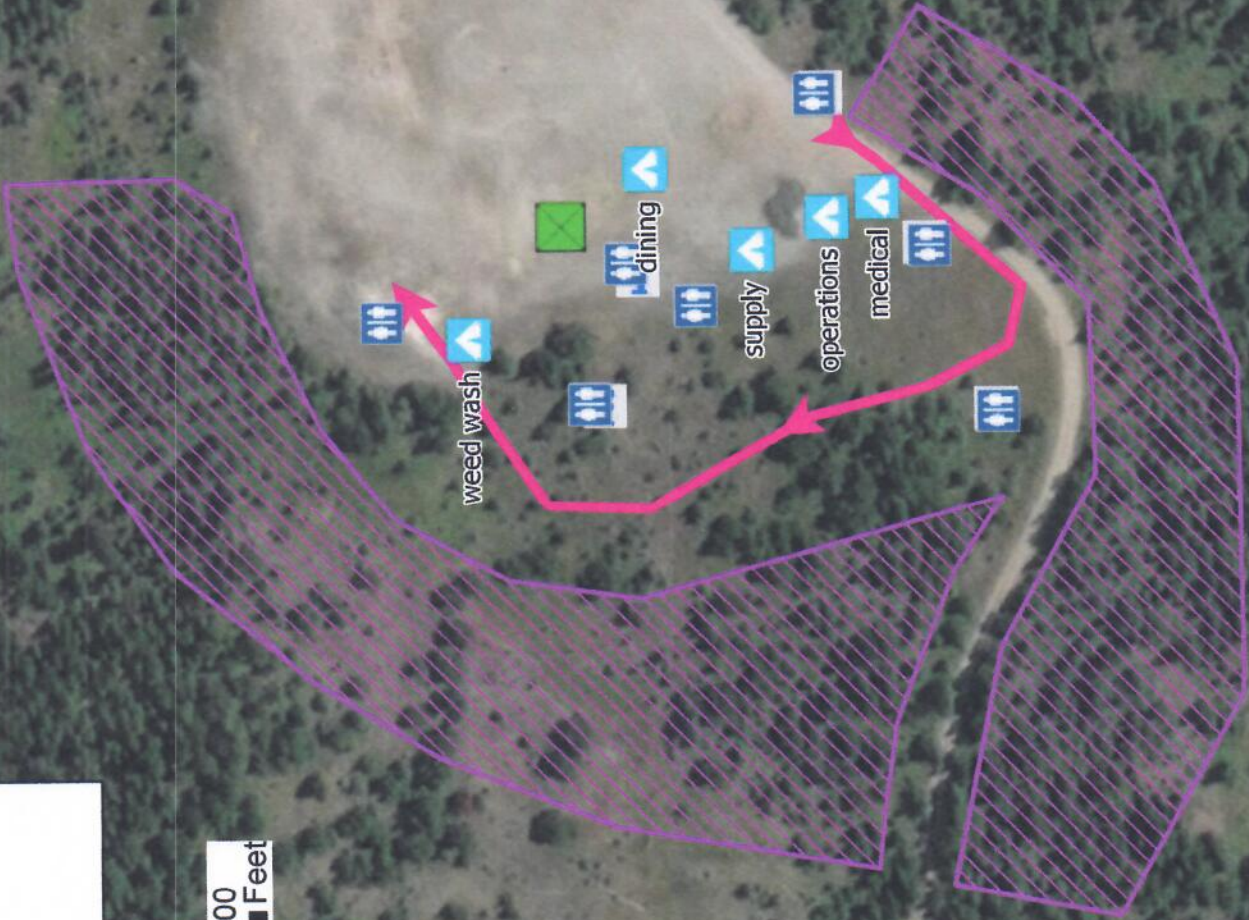
Camp Map



Andrew Mock
 9/7/2020 1431
 North American 1983 Datum,
 Lat/Long Grid

Event Point

-  Aerial Hazard
-  Aerial Ignition
-  Airstrip or Airport
-  Bridge
-  Camp
-  Clean Up Area
-  Closure
-  Culvert



MEDICAL PLAN (ICS 206 WF)

Controlled Unclassified Information//Basic

Medical Incident Report

FOR A NON-EMERGENCY INCIDENT, WORK THROUGH CHAIN OF COMMAND TO REPORT AND TRANSPORT INJURED PERSONNEL AS NECESSARY.

FOR A MEDICAL EMERGENCY: IDENTIFY ON SCENE INCIDENT COMMANDER BY NAME AND POSITION AND ANNOUNCE "MEDICAL EMERGENCY" TO INITIATE RESPONSE FROM IMT COMMUNICATIONS/DISPATCH.

Use the following items to communicate situation to communications/dispatch.

- 1. CONTACT COMMUNICATIONS / DISPATCH** (Verify correct frequency prior to starting report)
Ex: "Communications, Div. Alpha. Stand-by for Emergency Traffic."
- 2. INCIDENT STATUS:** Provide incident summary (including number of patients) and command structure.
Ex: "Communications, I have a Red priority patient, unconscious, struck by a falling tree. Requesting air ambulance to Forest Road 1 at (Lat./Long.) This will be the Trout Meadow Medical, IC is TFLD Jones. EMT Smith is providing medical care."

Severity of Emergency / Transport Priority	<input type="checkbox"/> RED / PRIORITY 1 Life or limb threatening injury or illness. Evacuation need is IMMEDIATE Ex: Unconscious, difficulty breathing, bleeding severely, 2° – 3° burns more than 4 palm sizes, heat stroke, disoriented. <input type="checkbox"/> YELLOW / PRIORITY 2 Serious Injury or illness. Evacuation may be DELAYED if necessary. Ex: Significant trauma, unable to walk, 2° – 3° burns not more than 1-3 palm sizes. <input type="checkbox"/> GREEN / PRIORITY 3 Minor Injury or illness. Non-Emergency transport Ex: Sprains, strains, minor heat-related illness.	
Nature of Injury or Illness & Mechanism of Injury		Brief Summary of Injury or Illness (Ex: Unconscious, Struck by Falling Tree)
Transport Request		Air Ambulance / Short Haul/Hoist Ground Ambulance / Other
Patient Location		Descriptive Location & Lat. / Long. (WGS84)
Incident Name		Geographic Name + "Medical" (Ex: Trout Meadow Medical)
On-Scene Incident Commander		Name of on-scene IC of Incident within an Incident (Ex: TFLD Jones)
Patient Care		Name of Care Provider (Ex: EMT Smith)

3. INITIAL PATIENT ASSESSMENT: Complete this section for each patient as applicable (start with the most severe patient)

Patient Assessment: See IRPG page 106

Treatment:

4. TRANSPORT PLAN:

Evacuation Location (if different): (Descriptive Location (drop point, intersection, etc.) or Lat. / Long.) Patient's ETA to Evacuation Location:

Helispot / Extraction Site Size and Hazards:

5. ADDITIONAL RESOURCES / EQUIPMENT NEEDS:

Example: Paramedic/EMT, Crews, Immobilization Devices, AED, Oxygen, Trauma Bag, IV/Fluid(s), Splints, Rope rescue, Wheeled litter, HAZMAT, Extrication

6. COMMUNICATIONS: Identify State Air/Ground EMS Frequencies and Hospital Contacts as applicable

Function	Channel Name/Number	Receive (RX)	Tone/NAC *	Transmit (TX)	Tone/NAC *
COMMAND					
AIR-TO-GRND					
TACTICAL					

7. CONTINGENCY: Considerations: If primary options fail, what actions can be implemented in conjunction with primary evacuation method? Be thinking ahead.

8. ADDITIONAL INFORMATION: Updates/Changes, etc.

REMEMBER: Confirm ETA's of resources ordered. Act according to your level of training. Be Alert. Keep Calm. Think Clearly. Act Decisively.