

Beaver Fire

ID-NCF-000552

P1NJD8 (0117)

710044

Marion Fire

ID-NCF-000508

P1EKT520 (0117)



Team Intent

Implement the 5 "Rs"

Right Plan, Right Place, Right Time, Right Resources, and
Right Duration

Incident Action Plan

Monday

September 7 - 8, 2020

Day Operational Period 0700 – 1900

Night Operational Period 1800 – 0800

INCIDENT OBJECTIVES

1. Incident Name
Beaver Fire, Marion Fire

2. Date Prepared
09/07/2020

3. Time Prepared
2100

4. Objectives

High Value Assets and Resources to be Protected:

Public and first responder health from COVID-19; community of Powell and associated private inholdings/property; smoke sensitive communities, including Missoula and the Bitterroot valley; public and private timber lands.


Leader's Intent:

- Protect human life. Firefighter and public safety will be given the highest priority at all times.
- Minimize the exposure of the public and responders to transmission or infection from COVID-19 by following CDC, county and NPCNF measures relating to social distancing, masks and cleaning procedures.
- Establish and maintain information sharing networks with communities potentially impacted by smoke.
- Manage smoke, while providing for public safety, to provide for desirable air quality and visibility.
- Minimize fire impacts to Whitebark pine seed collection trees.
- Manage any portion of the fire located within a wilderness area using strategies and tactics that are commensurate with wilderness values.
- Take appropriate measures to reduce chances of noxious weed spread onto the forest, including weed wash of vehicles before entering the incident area and when demobilizing.
- Commit incident resources only where there is a high probability of meeting reasonable objectives or when the risk of injury or death can be mitigated.
- Maintain and foster relationships with users of public lands, landowners, agencies and local communities.
- Adhere to applicable work-rest guidelines to reduce fatigue and ensure that assigned fire-fighting personnel receive adequate rest.
- Maintain a workplace and atmosphere of mutual respect and free of any harassment. There will be no tolerance for any unethical, illegal drug or alcohol related incidents.
- Effectively manage costs commensurate with the high value assets and resources to be protected and risks..
- Efficiently demobilize resources in a manner that will ensure safe travel and "right-sizing" consistent with demobilization glidepath direction.

Operational Objectives:

The incident will be managed utilizing contain/confine and point protection strategies.

5. Prepared By (Planning Section Chief)
Will Bernard: 

6. Approved By (Incident Commander)
Bob Fry: 

ORGANIZATION ASSIGNMENT LIST		9. Operations Section		
1. Incident Name Beaver Fire, Marion Fire		Chief-Line	Joe Brabender, Rich Cowger (t)	
		Chief-Planning	Ron Naber, Danny Lemer (t)	
		a. Divisions/Groups		
2. Date 09/07-08/20		3. Time Day 0700-1900 Night 1800 - 0800		
		Beaver Fire		
4. Operational Period: Day Shift		Division/Group	Alpha / Bravo Day	Manny Mendoza, Jeff Barnes (t)
		Division/Group	Alpha / Bravo Night	Mike West
5. Incident Commander and staff		Division/Group	Zulu	Monitored
Incident Commander	Bob Fry	Division/Group		
Deputy IC	Jay Winfield, Paul Roose (t)	Division/Group		
Safety Officers	Marvin Carpenter, Steve Wyatt, Dean Whitney (t)	b. Divisions/Groups		
Information Officer	Penny Bertram, Jill Cobb (v), Nick Holloway (t)	Marion Fire		
Liaison Officer	Lance Burns, Chris Grove			
6. Agency Representatives		Division/Group	Mike	Kris George, Jacob Jeresek (t)
Agency	Name	Division/Group		
FS Agency Admin	Brandon Knapton, Ron Tipton (t)	Division/Group		
FS Fire Staff Officer	Kevin Pfister	Division/Group		
FS AFMO	Michael Wood	Division/Group		
		Division/Group		
		c. Divisions/Groups		
7. Planning Section				
Chief	Will Bernard	Division/Group		
Resources Unit	Jody Pettit	Division/Group		
Check In	Nolan Baldwin (t)	Division/Group		
Demobilization Unit	Joe Read	Division/Group		
Documentation	Danny Baggao	Division/Group		
Situation Unit	Chad Ramsay, Roger Jackson (v)	Division/Group		
GIS Specialist	Andrew Mock	d. Air Operations Branch		
Fire Behavior	Eric Trimble	Air Operations Branch Director	Sal Garcia	
FS Resource Advisor	Rebecca Lloyd	Air Attack Supervisor		
IT Support	Ed Yeager, Bryce Nordgren (t)	Air Support Supervisor		
		Helicopter Coordinator		
		Air Tanker Coordinator		
8. Logistics Section		10. Finance Section		
Logs Chief	Tyler Rae	Chief	Dale Harrison, Amy Waring (t)	
Facilities Unit		Time Unit Leader		
Supply Unit	Bryan Connelley	Cost Unit	Liz Behrends (t)	
Ordering	Cindy Wharton	Personnel	Amy Erickson (t)	
Communications Unit	Tom Robbins	Equipment	Lisa Hawdon	
Medical Unit	Teri Miller, Melanie Miller (t)			
Food Unit		Prepared by (Resource Unit Leader) Jody Pettit		
Ground Support Unit				
Security Unit	Peter Pappas			

Beaver Fire Weather Forecast

Spot Forecast from the National Weather Service Missoula, MT
Forecast is based on start time of 0700 PDT on Sept 7, 2020
126 PM MDT 9/6/2020

DISCUSSION . . .

Current timing for the arrival of East winds is between 0900 and 1000 PDT. The precipitation will be very showery and short duration, however, the humidity will likely increase throughout the day. High pressure returns to the area on Tuesday resulting in a return to warm, dry weather on Wednesday and continuing throughout the week.

MONDAY (LABOR DAY) . . .

- * Sky/Weather.....Mostly Cloudy.
- * CWR (> 0.10 Inch)...50%.
- * LAL.....1.
- * Max Temperature.....53-58°F.
- * Min Humidity.....55-65%.
- * Wind (20 ft).....North 7-16 mph becoming NE 17-19 mph w/gusts to 35 mph by afternoon.
- * Haines Index.....2 very low.
- * Precip Amount.....0.11"

MONDAY NIGHT . . .

- * Sky/Weather.....Mostly Clear.
- * CWR (> 0.10 Inch)...0 percent.
- * LAL.....1.
- * Min Temperature.....27-32°F.
- * Max Humidity.....80-90%.
- * Wind (20 ft).....East 12-7 mph w/gusts to 24 mph.

TUESDAY . . .

- * Sky/Weather.....Sunny. Widespread frost and patchy fog in the morning
- * CWR (> 0.10 Inch)...0%.
- * LAL.....1.
- * Max Temperature.....58-63°F.
- * Min Humidity.....20-25%.
- * Wind (20 ft).....East 5 mph in the morning becoming variable 2-5 mph by afternoon.
- * Haines Index.....4 low.

TUESDAY NIGHT . . .

- * Sky/Weather.....Mostly Clear.
- * CWR (> 0.10 Inch)...0%.
- * LAL.....1.
- * Max Temperature.....29-34°F.
- * Max Humidity.....60-70%.
- * Wind (20 ft).....Variable 4-6 mph.

WEDNESDAY...Mostly Clear. Lows 35-40. Highs 70-75. Terrain driven winds to 5 mph.

THURSDAY...Mostly Clear, Lows 42-47. Highs 74-79. Terrain driven winds to 5 mph.

FRIDAY...Mostly Clear. Lows 45-50. Highs 75-80. Terrain driven winds to 10 mph

SATURDAY...Mostly Clear. Lows 45-55. Highs 75-80.

FIRE BEHAVIOR FORECAST

FORECAST NUMBER: 6

INCIDENT TYPE: Wildfire

FIRE NAME: Beaver/Marion

OPERATIONAL PERIOD: Sept 7, 2020 Monday

DATE ISSUED: Sept 6, 2020

TIME ISSUED: 1800

UNIT: ID-Clear-Nez

PREPARED BY: Eric Trimble – FBAN

INPUTS

WEATHER SUMMARY:

Sky Weather: Mostly Cloudy.

CWR (>0.10"): 50%

Precip Amount: 0.11"

Max Temps: 53-58°

Min RH: 55-65% **Haines:** 2 (very low). **LAL:** 1

Winds: North 7-16 mph becoming NE 17-19 mph w/gusts to 35 mph by afternoon.

FUELS:

Beaver: Mature, mixed conifer forest dominated by DF, LPP, WL, SAF, and ES; with WRC on north aspects/valley bottoms. Relatively heavy snag component. Live hardwood fuels are largely green and will discourage surface fire spread. Herbaceous fuels on the more exposed slopes are starting to cure and should support limited surface fire activity.

Marion: Mature SAF, ES and LPP with SAF/ES regen/ladder fuels. Relatively high dead/down component.

Fine Fuels 8-11%; 10-hr: 5%; 100hr: 11%; 1000hr: 12%

ERC: 80th percentile

OUTPUTS - FIRE BEHAVIOR

GENERAL:

Assuming we do not receive the precipitation that is in the forecast expect active surface fire activity particularly within the jackpots of down/woody material and dense pockets of conifer regen ladder fuels. Spruce/sub-alpine fir, multi-story stands will favor single to small group tree torching. Live hardwood fuels will generally discourage fire growth.

Backing spread around 1-2 ft/min with flames 2-4 ft. Head fire with possible 4-6 ft. flame lengths and 10-15 ft/min rates of spread, higher with torching. Spotting is not expected to be a concern due to high RH's.

Probability of Ignition (PIG): 30-40% during the peak of the burning period.

SPECIFIC:

Beaver – Assuming we do not receive the precipitation that is in the forecast expect moderate surface fire behavior, primarily single and small group-tree torching, backing and flanking. Greatest potential for fire growth is near the Division A/Z break where the fire is expected to move West-SW towards the Beaver/Sand Creek divide.

Marion Fire – Expect moderate surface fire behavior, primarily single and small group-tree torching, backing and flanking. Greatest potential for fire growth is South up the E-W ridge above Marion Meadows.

AIR OPERATIONS: Expect poor visibility and turbulence due to low clouds and high winds.

SAFETY: Maintain good situational awareness with the onset of strong, gusty N-NE winds. Conditions remain favorable for moderate fire growth.

ASSIGNMENT LIST		1. Branch		2. Division/Group		
				Alpha / Bravo Day		
3. Incident Name Beaver Fire		4. Operational Period Date: 09/07/20		Day 0700 - 1900 Night 1800 - 0800		
5. Operations Personnel						
Operations Chief	Joe Brabender, Rich Cowger (t)		Division/Group Supervisor	Manny Mendoza, Jeff Barnes (t)		
Branch Director			Air Support Group Supervisor	Sal Garcia		
6. Resources Assigned This Period						
Strike Team/Task Force/ Resource Designator	Last Shift	Leader	No. Pers.	Trans. Needed	Drop Off PT./Time	Pick Up PT./Time
O-12 TFLD	9/18	Jacob Cafferty	1	N		
O-15 TFLD (t)	9/17	Clint Dean	1	N		
C-4 TY2IA NCF	9/17	Walhlberg, Schaeffer (t)	17	N		
C-5 TY2IA Palouse	9/18	Cody Cline, Chad Borg (t)	18	N		
E-44 ENG6 Peanut Pie	9/19	James Maher	3	N		
E-45 ENG6 Firebrand	9/19	Lauren Bendel	3	N		
E-46 WTS2 Smith20	9/17	Stephen Roach	1	N		
E-47 WTS2 Andrews Fire Service	9/17	Brian Palmer	1	N		
O-17 Timber Specialist	9/14	Jake Jararczeski	1	N		
O-18 Timber Specialist	9/14	Ray Craig	1	N		
O-16 HEQB	9/17	Robbie Easy	1	N		
O-33 HEQB (t)	9/18	Andrew Brown	1	N		
E-50 EXCA2 Cox	9/20	Marvin Gregg	2	N		
E-55 MAST Downing	9/19	Wes Renne	2	N		
E-56 FEL1 Downing	9/19	Aaron Downing	2	N		
E-57 FEL1 Welch Brothers	9/19	Jim Bonnalie	2	N		
E-59 SKD1 Welch Brothers	9/19	Craig Welch	2	N		
E-65 SKD1 Bonnalie	9/19	Jim Bonnalie	1	N		
O-11 EMTF	9/17	Jessica Tullus	1	N		
E-39 AMBU AMR NW	9/17	Patterson, Amback	2	N		
7. Control Operations						
<p>Task: Brush and open existing Rd. systems from Round Top RAWS site to the West and South to tie into the 368 Rd. Create fuel break from 368 Rd. to tie in with existing fuel break. Scout for additional opportunities to the West of the fire.</p> <p>Purpose: Create and improve containment lines to keep fire South and East of private property and the Round Top RAWS.</p> <p>End State: Fuel break has been completed from the 368 Rd. to Round Top RAWS; fire has been kept off of private property.</p>						
8. Special Instructions						
<p>Coordinate with Beaver Ridge Lookout for fire activity information. LCES shall be in place prior to engaging fire. All COVID-19 mitigation protocols shall be followed. Identify potential medivac locations.</p>						
9. Division/Group Communication Summary						
Function	Frequency - RX	Frequency - TX	Tone	Channel	Comments	
TAC 6	168.0500 N	168.0500 N	136.5	6		
A/G	167.1250 N	167.1250 N		15		
CMD 1	170.0000 N	166.6750 N	136.5	1		
CMD 2	170.6875 N	166.5750 N	136.5	2		
Prepared by (RESL) Jody Pettit	Approved by (PSC2) Will Bernard		Date 09/06/20		Time 2000	

ASSIGNMENT LIST		1. Branch		2. Division/Group		
3. Incident Name Beaver Fire		4. Operational Period Date: 09/07-08/20		Day 0700 - 1900 Night 1800 - 0800		
5. Operations Personnel						
Operations Chief	Joe Brabender, Rich Cowger (t)		Division/Group Supervisor	Mike West		
Branch Director			Air Support Group Supervisor	Sal Garcia		
6. Resources Assigned This Period						
Strike Team/Task Force/ Resource Designator	Last Shift	Leader	No. Pers.	Trans. Needed	Drop Off PT./Time	Pick Up PT./Time
O-31 TFLD	9/18	Chad Daugherty	1	N		
O-32 TFLD(t)	9/19	William Mack	1	N		
O-27 HEQB (t)	9/18	Andrew Saralecos	1	N		
E-38 FORW Hester	9/19	Joe Hester	2	N		
E-40 Log Truck Anderson	9/19	Brett Flodin	1	N		
E-41 Log Truck Anderson	9/19	Kelly Glessner	1	N		
E-42 Log Truck Anderson	9/19	Casey Nelson	1	N		
E-49 ECXA2 Flash Excavating	9/20	Gordon Eckel	2	N		
E-53 Log Loader Cox	9/19	Bill Hazelton	2	N		
E-54 Log Loader Cox	9/19	Richard Cox	2	N		
E-58 SKD1 Downing	9/19	Lonnie Williams	2	N		
E-63 Log Truck Nez Tribe	9/20	Jeremy Littlefield	1	N		
E-64 SKD1 Bonnalie	9/19	Clint Mader	2	N		
7. Control Operations						
<p>Task: Move log decks to DP1. Monitor fire.</p> <p>Purpose: Complete the fuel break. Ensure safety of log trucks and fire fighters.</p> <p>End State: Log decks have been moved to DP1. Everyone is safe.</p>						
8. Special Instructions						
<p>Coordinate with Beaver Ridge Lookout for fire activity information. LCES shall be in place prior to engaging fire. All COVID-19 mitigation protocols shall be followed. Identify potential medivac locations.</p>						
9. Division/Group Communication Summary						
Function	Frequency - RX	Frequency - TX	Tone	Channel	Comments	
TAC 7	168.2000 N	168.2000 N	136.5	7		
A/G	167.1250 N	167.1250 N		15		
CMD 1	170.0000 N	166.6750 N	136.5	1		
CMD 2	170.6875 N	166.5750 N	136.5	2		
Prepared by (RESL) Jody Pettit	Approved by (PSC2) Will Bernard		Date 09/06/20	Time 2000		

ASSIGNMENT LIST		1. Branch	2. Division/Group			
3. Incident Name Marion Fire		4. Operational Period Date: 09/07/20		Day 0700 - 1900 Night 1800 - 0800		
5. Operations Personnel						
Operations Chief	Joe Brabender, Rich Cowger (t)		Division/Group Supervisor	Kris George, Jacob Jeresek (t)		
Branch Director			Air Support Group Supervisor	Sal Garcia		
6. Resources Assigned This Period						
Strike Team/Task Force/ Resource Designator	Last Shift	Leader	No. Pers.	Trans. Needed	Drop Off PT./Time	Pick Up PT./Time
		Monitored				
7. Control Operations						
Task: Provide for firefighter and public safety. Keep fire West of Sneak Foot Meadows and South of Salvage Pass Trail. Purpose: Minimize fire spread toward values at risk. Minimize smoke production to the community of Missoula. End State: The fire is in monitor status.						
8. Special Instructions						
Monitor for and extinguish any new spots East of Sneak Foot Meadows and North of Savage Pass Trail. Remain available for IA within response area. Coordinate with Beaver Ridge Lookout for fire activity information. LCES shall be in place prior to engaging fire. All COVID-19 mitigation protocols shall be followed. Identify potential medivac locations.						
9. Division/Group Communication Summary						
Function	Frequency - RX	Frequency - TX	Tone	Channel	Comments	
TAC 9	166.7250 N	166.7250 N	136.5	9		
A/G	167.1250 N	167.1250 N		15		
CMD 1	170.0000 N	166.6750 N	136.5	1		
CMD 2	170.6875 N	166.5750 N	136.5	2		
Prepared by (RESL) Jody Pettit		Approved by (PSC2) Will Bernard		Date 09/06/20	Time 2000	

AIR OPERATIONS SUMMARY (ICS 220)

1. Incident Name: Beaver ID-NCF-000552 Marion ID-NCF-000508	2. Operational Period: Date From: Sept. 7, 2020 Date To: Sept. 7, 2020 Time From: 0730 Time To: 2030	3. Sunrise: 0614 Sunset: 1909	
4. Remarks (safety notes, hazards, air operations special equipment, etc.): * Aviation requirement will be reviewed and applied where needed Consider the safety and risk analysis while planning and ordering A/C * A/C availability will be shared as needed, unless assigned to the specific incident * A/C request will be approved and ordered accordingly - dispatch		5. Ready Alert Aircraft: Medivac: 1HQ Short Haul Helicopter New Incident: Two Bear Air-(Hoist @	
7. Personnel:	Name: _____ Phone Number: _____	AM _____ FM _____	9. Fixed-Wing (category/kind/type, make/model, N#, base): Air Tactical Group Supervisor Aircraft: A/C avail. at Grangeville Airport / Helibase Air Attack - primary AA-117 (N44NC) Other Fixed-Wing Aircraft: Seats - T-882 @ GIC & T-835 @ GIC
Air Operations Branch Director Sal Garcia 760 310-0138	N/A	Air/Air Fixed-Wing Air/Air Rotary-Wing - Flight Following Air/Ground Command Deck Coordinator Take-Off & Landing Coordinator Air Guard	127.0750 A-10 167.1250 A-9 Plan 168.6250
10. Helicopters (use additional sheets as necessary):			
FAA N# Via Dispatch H-974H HB-116 HG-562AJ ASSIGNED TO THE H-16920	Category/Kind/Type A/C availability T3 T1 T1 BEAVER INC. T2	Make/Model Not assigned to Inc. Bell 407 Kaman Aero K-1200 CH-47D	Base For Planning Located at Grangeville - Airport Powell R.S.
Start 0800 0800 0800 1400 On travel status am	Available Available Local Available Local Available Local on request	Remarks Order through dispatch Order through dispatch Order through dispatch Standard	
11. Prepared by: Name: <u>Sal Garcia</u> Position/Title: <u>AOBD</u> Signature: _____ Date/Time: <u>9/6/2020 - 1810</u>			

INCIDENT RADIO COMMUNICATIONS PLAN		Incident Name BEAVER FIRE			Date/Time Prepared 9/6/2020 1600		Operational Period Date/Time 9/7/2020 0700 – 9/8/2020 0700		
Ch #	Function	Channel Name	Assignment	RX Freq N or W	RX Tone	TX Freq N or W	Tx Tone	Mode	Remarks
1	Repeater	Command 1	All Resources	170.0000 N	136.5	166.6750 N	136.5	A	To Communications
2	Repeater	Command 2	All Resources	170.6875 N	136.5	166.5750 N	136.5	A	To Communications
3									
4									
5									
6	Tactical	TAC 6	DIV A	168.0500 N	136.5	168.0500 N	136.5	A	NIFC Tac
7	Tactical	TAC 7	DIV B	168.2000 N	136.5	168.2000 N	136.5	A	NIFC Tac
8	Tactical	TAC 8	DIV Z	168.6000 N	136.5	168.6000 N	136.5	A	NIFC Tac
9	Tactical	Tac 9	DIV M	166.7250 N	136.5	166.7250 N	136.5	A	NIFC Tac
10	Tactical	TAC 10	Unassigned	166.7750 N	136.5	166.7750 N	136.5	A	NIFC Tac
11	Tactical	Tac 11	Logging	168.2500 N	136.5	168.2500 N	136.5	A	NIFC Tac
12	Local	E Beaver Ridge	I/A	171.5750 N		166.2625 N	100.0	A	NFS Repeater
13	Local	N Rocky Ridge	I/A	171.5750 N		166.2625 N	162.2	A	NFS Repeater
14									
15	Air/Ground	A/G Primary	All	167.1250 N		167.1250 N		A	NIFC A/G Primary
16	Air Guard	Air Guard	All	168.6250 N		168.6250 N	110.9	A	Emergency
Prepared By (Communications Unit)				Incident Location		Powell ID			
Thomas Robbins COML <i>Thomas Robbins</i>									

The convention calls for frequency lists to show four digits after the decimal place, followed by either an "N" or a "W", depending on whether the frequency is narrow or wide band. Mode refers to either "A" or "D" indicating analog or digital (e.g. Project 25) or "M" indicating mixed mode. All channels are shown as if programmed in a control station, mobile or portable radio. Repeater and base stations must be programmed with the Rx and Tx reversed.

HEALTH AND SAFETY MESSAGE

SAFETY starts with **YOU**

We are **ALL** accountable for **SAFE** behaviors

INCIDENT:
Beaver Fire & Marion Fire

DATE: September 7, 2020
TIME: Day 0700 - 1900

Major Hazards and Risks:

- **Holiday weekend!** Expect holiday traffic in and around the fire area. Use caution with the increased traffic and practice defensive driving techniques.

Quote of the Day

SAFE DRIVING, SAVES LIVES



Camp Covid Crud

Be in tune with any symptoms you may have

Seek treatment from medical unit if needed.

Do not expose others if you suspect you are ill.

Do not let symptoms persist.

6 feet is the magical distance for social distancing.

We do not need camp crud to run through this camp like wildfire.

We need you to stay healthy to finish this incident and to move onto the next one.

LOOKOUTS

Make sure to use experienced, competent, trusted firefighters.

Make sure they understand the plan.

Make sure they understand trigger points and where they are.

Make sure they know what to do when a trigger point is being approached.

Make sure to use a vantage point that allows clear visuals of the fire, trigger points and resource locations.

Utilize aerial platforms when the fire is active. Have lookouts set their own safety zones and escape routes.

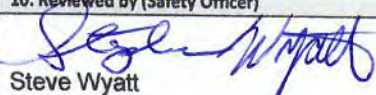


Your Safety Team

Marvin Carpenter, Dean Whitney (t), Steve Wyatt, Dennis Crawford.

Remember Each of **You** are safety Officers!!

MEDICAL PLAN (ICS 206 WF)

1. Incident/ project name and address:		2. Operational Period: Date/Time				
Beaver Powell Idaho		9-6-20 0700-1900				
3. Ambulance Services						
Name	Complete address	Phone & EMS Frequency	ALS ✓			
Missoula Ambulance Service INC	2600 Palmer St Missoula, MT 59808	406-549-2325	X			
Powell QRU	Powell Ranger Station	911				
AMR Ambulance	Division A	Command				
4. Air Ambulance Services						
Name	Location/remarks	Phone & EMS Frequency	ALS ✓	hoist ✓	night ✓	
Life Flight Network	Missoula, MT/Sand Point, ID/Butte	911 406-829-7070	X			
Alert Air Ambulance	Kalispell, MT	911 406-752-5111	X		X	
Two Bear Air	Whitefish, MT	911 406-297-2121		X	X	
5. Hospitals						
Name and Address	Phone	Level of care	Heli Pad ✓	If Helipad, Lat./Long. (DD mm.mmm') Datum WGS84	Travel time to hosp: min's Air Ground	
Eastern Idaho Regional Medical Center 3100 Channing Way Idaho Falls, ID 83404	208-529-6111	Trauma II Burn center	X	N 43 28' 17" W 111 59' 29.5"	285	
St. Patrick Hospital 500 Broadway Missoula, MT	406-543-7271	Trauma II	X	N 46 52.524 W 113 59.969	68	
Community Medical Center 2827 Ft. Missoula Rd Missoula, MT	406-728-4100	Trauma III	X	N 46 50.909 W 114 02.865	64	
6. Area Location Capability						
Branch, Div, Group	Aid Station Name; Responders	Equipment available	Emergency frequency	Ambulance ETA to site: min's Air Ground	Nearby Helispot &/or DP	Helispot &/or DP lat/long (DD mm.mmm') Datum WGS 84
Powell Ranger Station	MEDL/EMPF Teri Miller MEDL(t) Melanie Miller	ALS				
Division A	Jessica Tullis Alyse Gutierrez	EMTF EMPF				
Powell FOB/spike	Rosemary Meyers	AEMT				
Division A	Jerry Patterson 509-999-0457 Josh Amback 509-688-7593	EMPF EMTF				
7. Notes, special procedures: Use Medical Incident Report for medical response and Medical Incident Pre-Planning worksheet for briefing. Medical Emergencies should be reported in accordance with Lolo/Kootenai Forest procedures.						
8. Prepared by (Medical Unit Leader)		9. Date/Time		10. Reviewed by (Safety Officer)		11. Date/Time
Teri Miller		9/6/20 1700		 Steve Wyatt		9/6/20 1700

ICS-206 COVID-19 PLAN	1. Incident Name Beaver Fire	2. Date Prepared 9-6-20	3. Time Prepared	4. Operational Period
---------------------------------	--	-----------------------------------	------------------	-----------------------

INCIDENT MEDICAL AID STATIONS

MEDICAL AID STATION	LOCATION	ISOLATION?	
		YES	NO
Covid precheck in screening	Base camp/spike		X
Daily screening-road check	Powell Ranger Station	X	
Daily self checks	ICP		X

LOCAL SUPPORT

A. OFF-SITE ISOLATION FACILITIES

NAME	LOCATION	PHONE	MEDICAL	
			YES	NO
Hotels in Missoula, MT	Contact SWZ COVID logistics	406-540-2965		X

COVID SCREENING PROCEDURES

ICP		medical	
		ALS	BLS
BASE CAMP SPIKE	Covid precheck screening prior to checking in to fire Daily covid self check screening for all modules		X
MEDICAL UNIT-Powell Ranger Stations	Daily covid screening prior to briefing Cold/warm/hot medical units present (on site isolation present)	X	

TESTING FACILITIES

NAME	ADDRESS	Appointment required		Phone	Days operation		Hours operation	
		Yes	No		Work day	Week end	WD	WE
Community Medical Center Rapid tes outpatient lab	2827 Fort Missoula rd Missoula MT	X		406-327-4378	M-F	Sat	0630 1730	0830 1330
Missoula City-county Health depart	4025 flynn lane Missoula MT	X		406-258-4770	M-F	NA	0900 1600	NA
Clearwater Valley Hospital Orfino, ID	301 Cedar ST Orfino, Id		X	hospital 208-476-4555 Lab 208-476-8035	M-F	Sat	0900 1700	0900 1700

COVID-19 PROCEDURES

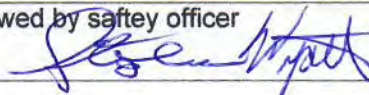
Field Screenings-self check screening. Postive Symptoms? Isolate patient, notify MEDL follow instuctions given.

First aid station Screening. Postive symtoms? Isolate patient Notify MEDL, follow instuctions

Notes: Isolation can take place in a vehicle short term or at Medical unit. Vehicle to be completely disinfected afterward before use. MEDL can assist contractors with Information. Expectations that Module of 1 concepts will be followed. See list of Covid expectations given to all resources upon checkin and follow. Nearest/reccomended testing is at Community Medical Center rapid 2 hour results.

Prepared by medical unit leader
Teri Miller 406-544-3070

Reviewed by saftey officer



ASSIGNMENT-SPECIFIC MEDICAL EMERGENCY ACTION PLAN

Pre-Planning for today's assignment

What are the likely hazards that could cause injuries? What kind of severe injuries?		
Who is the likely in-charge DIVS or overhead for an emergency in your assigned area today? (i.e. "Division Zulu")		
Who are the Medical personnel assigned to your part of the incident? What are their capabilities?		
Other Emergency Responders: fire dept., crash rescue, ambulance?		
Communications: Command channel, Air to Ground, Medical helicopters, local rescue/medical?		
Transportation methods available	Ground vehicle, drop point, coordinates, travel route?	
	Aircraft I.D, Helispot names, coordinates? Hoist capable, internal transport	
	Other available methods - contingency	
Most likely workforce for evacuation		

Response checklist

Who takes charge?

- DIVS or designated Overhead manages the overall scene and evacuation process.
- Medical personnel and emergency responders manage patients and assist in rescue/extrication.
- OPS and IC make command decisions so the emergency can be given full attention and management. They continue to manage ongoing incident operations.

Response sequence:

- First, secure the scene and protect responders and patients from further injury. Render first aid.
- Clear the Command channel for "Emergency Traffic only" if this is a critical emergency. If not, inform Communications of non-critical-emergency status and use normal communications.
- Contact closest Medical personnel and DIVS or designated Overhead for response.

Information for Communications: Medical Incident Report – See last page of IAP and IRPG pages 118 and 119.

Helicopter Extraction Operations: See IRPG pages 116 and 117.

Severe Weather: In the event of forecasted severe weather, implement Incident Severe Weather Plan.

Incident Within Incident: Upon arriving at the incident, all overhead should obtain and review the team's Incident Within Incident Plan.

BEAVER FIRE - MARION FIRE

Telephone List

9/7/2020

IC	BOB FRY	406-431-0102
DEP IC	JAY WINFIELD	208-993-0768
DEP IC (T)	PAUL ROOSE	406-640-1337
LOFR	CHRIS GROVE	406-381-7600
INFORMATION	PENNY BERTRAM	406-239-3970
OPS PLANNING	RON NABER	406-640-1614
OPS LINE	JOE BRABENDER	406-691-0369
SAFETY	MARVIN CARPENTER	406-594-5728
	STEVE WYATT	406-437-8386
	DEAN WHITNEY (T)	208-755-5956
PLANS CHIEF	WILL BERNARD	919-619-1408
RESL (POWELL DEMOB)	JODY PETTIT	208-290-8840
DEMOB	JOE READ	406-253-1130
CHECK IN	NOLAN BALDWIN	406-396-0074
DOCUMENTATION	DAN BAGGAO	575-910-7179
SITL	CHAD RAMSAY	208-290-2253
ITSS	ED YEAGER	818-360-2519
PLANS OFFICE - POWELL		208-942-3123
		208-942-3133
FINANCE CHIEF	DALE HARRISON	715-499-1457
	AMY WARING	406-579-5041
COMP/CLAIMS	AMY ERICKSON	406-207-3516
LOGS	TYLER RAE	406-425-1038
SPIKE MGR	IAN GARTHWAIT	202-272-5020
ORDERING	CINDY WHARTON	423-341-1243
SECURITY MGR	PETER PAPPAS	319-333-8877
COML	TOM ROBBINS	406-698-7500
INCM	BOB PEARSON	949-874-0586
MEDICAL	TERI MILLER	406-544-3070
MEDL (T)	MELANIE MILLER	406-546-0598

HOW TO SUBMIT YOUR TIME

Resources have 3 options

1. Fill out your CTR/Shift Ticket and have your supervisor sign. Place in box provided at morning briefing.
2. Fill out your CTR/Shift Ticket, have your supervisor sign, take a picture of it and email to Finance. On subject line put your: Last name (if CTR) or Contractor name (if Shift Ticket), and the word, Time. Email to: lisa_hawdon@firenet.gov
3. Fill out a fillable CTR/Shift Ticket, email it to your supervisor to sign and your supervisor emails it to Finance. On subject line put: Last name (if CTR) or Contractor name (if Shift Ticket), and the word, Time. Email to: lisa_hawdon@firenet.gov

If you would like a fillable CTR/Shift Ticket, email: lisa_hawdon@firenet.gov
Subject: Fillable Form. Within body message, state what form you would like and we will reply back to you with the electronic form.

If you are with the Montana DNRC, same as above, and state whether you would like the fillable Emergency Personnel & Equipment Shift Ticket (Combined form) or would like the individual CTR/Shift Ticket.

Fillable = Electronic

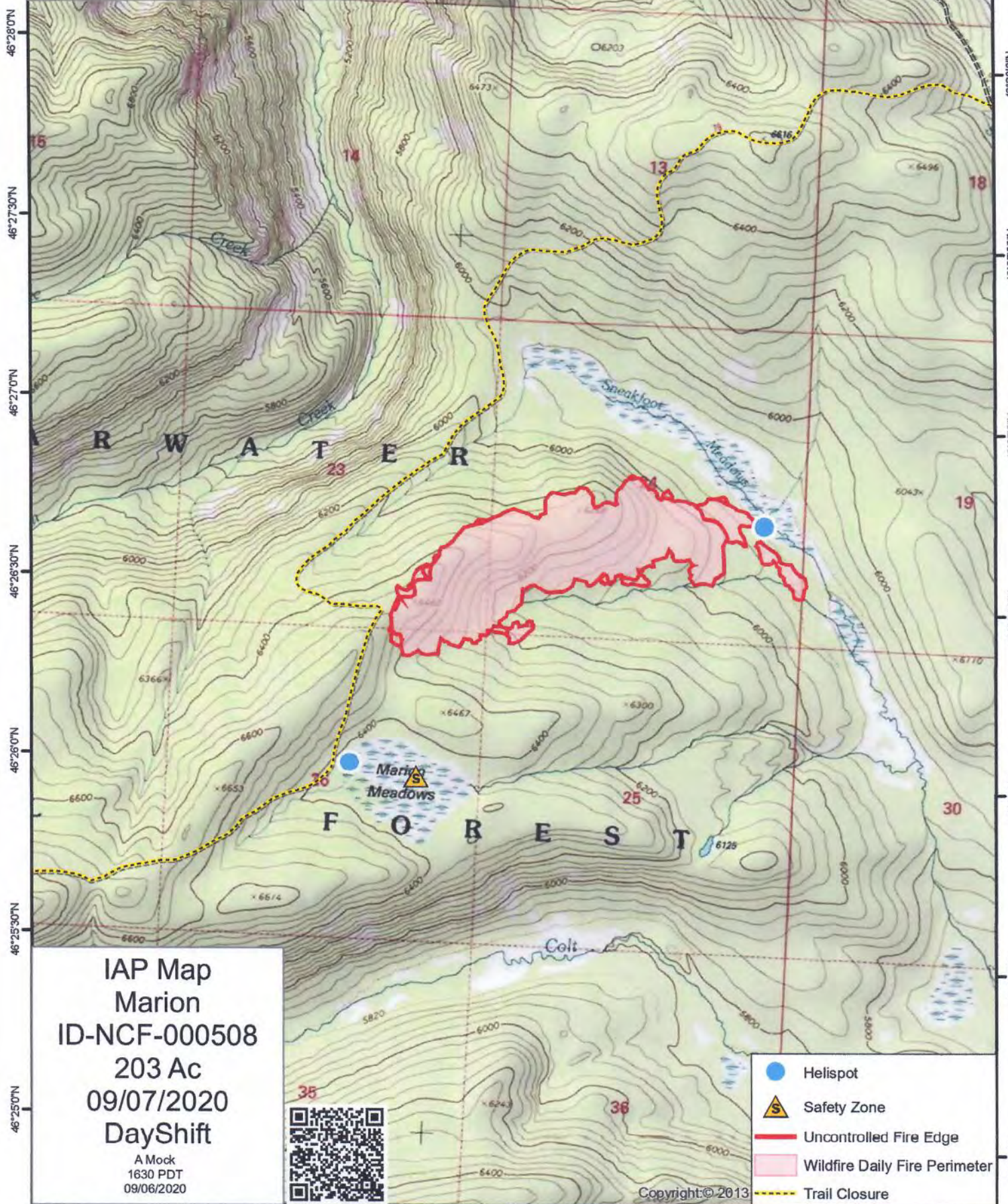
Please include your cell phone number in remarks

Note: Ensure your CTR or Shift ticket has a Supervisor's signature and show meal breaks.

Please do not wait to turn in your time. Please submit asap. We never know when resources could be moved to a higher priority fire and that will really slow down the reassignment process especially in this remote environment.

114°41'30"W 114°41'0"W 114°40'30"W 114°40'0"W 114°39'30"W 114°39'0"W 114°38'30"W 114°38'0"W





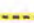
0 0.25 0.5 1 Miles



IAP Map
Marion
ID-NCF-000508
203 Ac
09/07/2020
DayShift

A Mock
1630 PDT
09/06/2020



-  Helispot
-  Safety Zone
-  Uncontrolled Fire Edge
-  Wildfire Daily Fire Perimeter
-  Trail Closure

Copyright © 2013

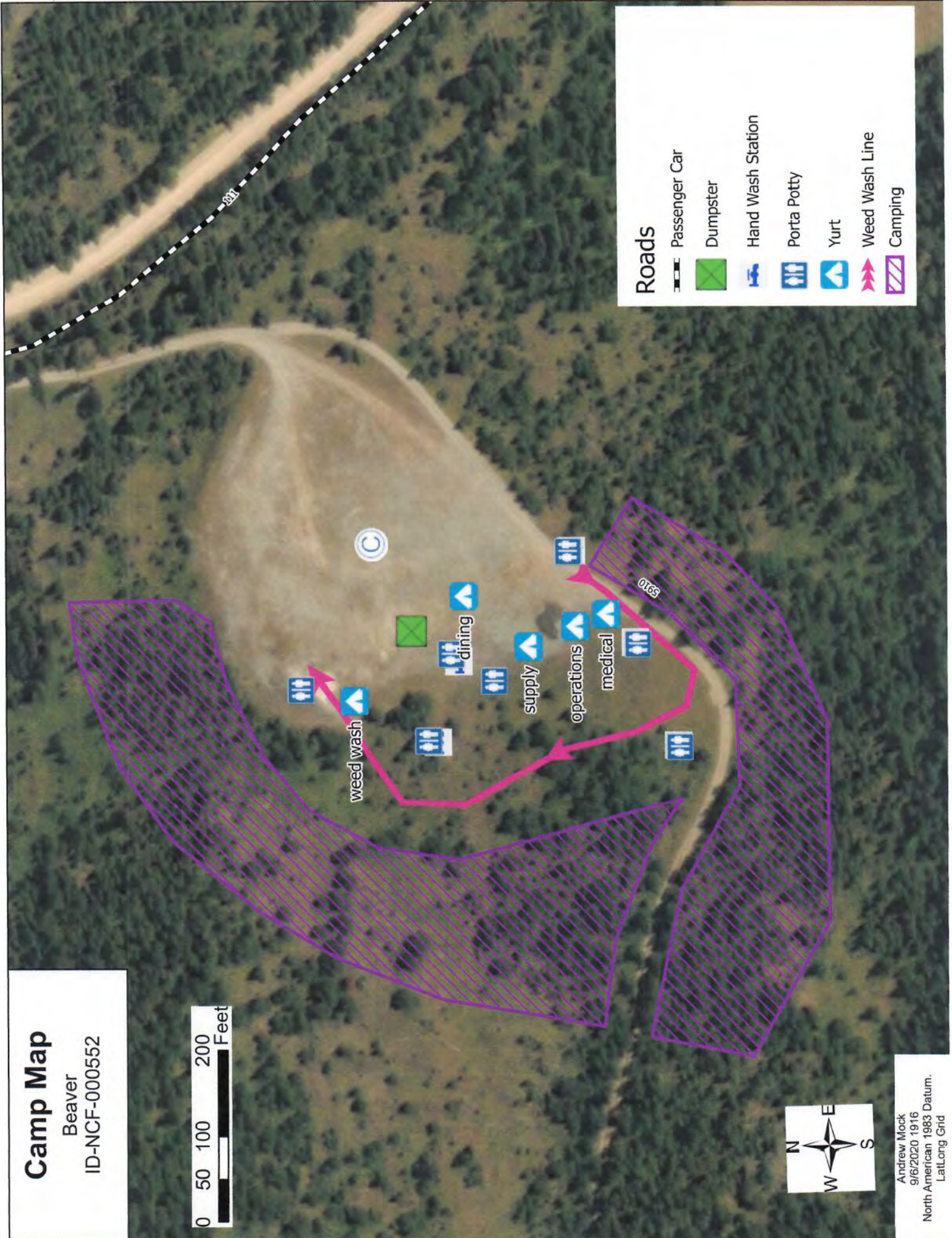
114°41'30"W 114°41'0"W 114°40'30"W 114°40'0"W 114°39'30"W 114°39'0"W 114°38'30"W 114°38'0"W

Camp Map

Beaver
ID-NCF-000552



Andrew Mock
9/6/2020 1916
North American 1983 Datum.
LatLong Grid



Roads

- Passenger Car
- Dumpster
- Hand Wash Station
- Porta Potty
- Yurt
- Weed Wash Line
- Camping

MEDICAL PLAN (ICS 206 WF)

Controlled Unclassified Information//Basic

Medical Incident Report					
<p>FOR A NON-EMERGENCY INCIDENT, WORK THROUGH CHAIN OF COMMAND TO REPORT AND TRANSPORT INJURED PERSONNEL AS NECESSARY.</p> <p>FOR A MEDICAL EMERGENCY: IDENTIFY ON SCENE INCIDENT COMMANDER BY NAME AND POSITION AND ANNOUNCE "MEDICAL EMERGENCY" TO INITIATE RESPONSE FROM IMT COMMUNICATIONS/DISPATCH.</p>					
<p>Use the following items to communicate situation to communications/dispatch.</p>					
<p>1. CONTACT COMMUNICATIONS / DISPATCH (Verify correct frequency prior to starting report) <i>Ex: "Communications, Div. Alpha. Stand-by for Emergency Traffic."</i></p>					
<p>2. INCIDENT STATUS: Provide incident summary (including number of patients) and command structure. <i>Ex: "Communications, I have a Red priority patient, unconscious, struck by a falling tree. Requesting air ambulance to Forest Road 1 at (Lat./Long.) This will be the Trout Meadow Medical, IC is TFLD Jones. EMT Smith is providing medical care."</i></p>					
Severity of Emergency / Transport Priority	<input type="checkbox"/> RED / PRIORITY 1 Life or limb threatening injury or illness. Evacuation need is IMMEDIATE <i>Ex: Unconscious, difficulty breathing, bleeding severely, 2° – 3° burns more than 4 palm sizes, heat stroke, disoriented.</i> <input type="checkbox"/> YELLOW / PRIORITY 2 Serious Injury or illness. Evacuation may be DELAYED if necessary. <i>Ex: Significant trauma, unable to walk, 2° – 3° burns not more than 1-3 palm sizes.</i> <input type="checkbox"/> GREEN / PRIORITY 3 Minor Injury or illness. Non-Emergency transport <i>Ex: Sprains, strains, minor heat-related illness.</i>				
Nature of Injury or Illness & Mechanism of Injury			<i>Brief Summary of Injury or Illness (Ex: Unconscious, Struck by Falling Tree)</i>		
Transport Request			<i>Air Ambulance / Short Haul/Hoist Ground Ambulance / Other</i>		
Patient Location			<i>Descriptive Location & Lat. / Long. (WGS84)</i>		
Incident Name			<i>Geographic Name + "Medical" (Ex: Trout Meadow Medical)</i>		
On-Scene Incident Commander			<i>Name of on-scene IC of Incident within an Incident (Ex: TFLD Jones)</i>		
Patient Care			<i>Name of Care Provider (Ex: EMT Smith)</i>		
<p>3. INITIAL PATIENT ASSESSMENT: Complete this section for each patient as applicable (start with the most severe patient)</p>					
<p>Patient Assessment: See IRPG page 106</p>					
<p>Treatment:</p>					
<p>4. TRANSPORT PLAN:</p>					
<p>Evacuation Location (if different): (Descriptive Location (drop point, intersection, etc.) or Lat. / Long.) Patient's ETA to Evacuation Location:</p>					
<p>Helispot / Extraction Site Size and Hazards:</p>					
<p>5. ADDITIONAL RESOURCES / EQUIPMENT NEEDS:</p>					
<p><i>Example: Paramedic/EMT, Crews, Immobilization Devices, AED, Oxygen, Trauma Bag, IV/Fluid(s), Splints, Rope rescue, Wheeled litter, HAZMAT, Extrication</i></p>					
<p>6. COMMUNICATIONS: Identify State Air/Ground EMS Frequencies and Hospital Contacts as applicable</p>					
Function	Channel Name/Number	Receive (RX)	Tone/NAC *	Transmit (TX)	Tone/NAC *
COMMAND					
AIR-TO-GRND					
TACTICAL					
<p>7. CONTINGENCY: <u>Considerations:</u> If primary options fail, what actions can be implemented in conjunction with primary evacuation method? Be thinking ahead.</p>					
<p>8. ADDITIONAL INFORMATION: Updates/Changes, etc.</p>					
<p>REMEMBER: Confirm ETA's of resources ordered. Act according to your level of training. Be Alert. Keep Calm. Think Clearly. Act Decisively.</p>					