

Beaver Fire

ID-NCF-000552
P1NJD8 (0117)
710044

Marion Fire

ID-NCF-000508
P1EKT520 (0117)



Team Intent

Strive to Improve

People Skills, Communications, Coordination, Flexibility, Vision,
Training and Mentoring, Cost Effective Strategies and making
Safety Instinctive.

Incident Action Plan

Sunday

September 6, 2020

Operational Period 0700 – 1900

INCIDENT OBJECTIVES1. Incident Name
Beaver Fire, Marion Fire2. Date Prepared
09/05/20203. Time Prepared
2000

4. Objectives

High Value Assets and Resources to be Protected:

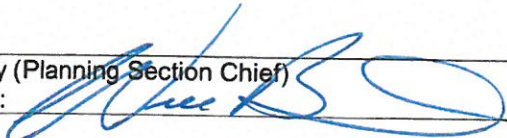
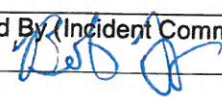
Public and first responder health from COVID-19; community of Powell and associated private inholdings/property; smoke sensitive communities, including Missoula and the Bitterroot valley; public and private timber lands.

Leader's Intent:

- Protect human life. Firefighter and public safety will be given the highest priority at all times.
- Minimize the exposure of the public and responders to transmission or infection from COVID-19 by following CDC, county and NPCNF measures relating to social distancing, masks and cleaning procedures.
- Establish and maintain information sharing networks with communities potentially impacted by smoke.
- Manage smoke, while providing for public safety, to provide for desirable air quality and visibility.
- Minimize fire impacts to Whitebark pine seed collection trees.
- Manage any portion of the fire located within a wilderness area using strategies and tactics that are commensurate with wilderness values.
- Take appropriate measures to reduce chances of noxious weed spread onto the forest, including weed wash of vehicles before entering the incident area and when demobilizing.
- Commit incident resources only where there is a high probability of meeting reasonable objectives or when the risk of injury or death can be mitigated.
- Maintain and foster relationships with users of public lands, landowners, agencies and local communities.
- Adhere to applicable work-rest guidelines to reduce fatigue and ensure that assigned fire-fighting personnel receive adequate rest.
- Maintain a workplace and atmosphere of mutual respect and free of any harassment. There will be no tolerance for any unethical, illegal drug or alcohol related incidents.
- Effectively manage costs commensurate with the high value assets and resources to be protected and risks..
- Efficiently demobilize resources in a manner that will ensure safe travel and "right-sizing" consistent with demobilization glidepath direction.

Operational Objectives:

The incident will be managed utilizing contain/confine and point protection strategies.

5. Prepared By (Planning Section Chief)
Will Bernard:

6. Approved By (Incident Commander)
Bob Fry:


ORGANIZATION ASSIGNMENT LIST		9. Operations Section	
1. Incident Name Beaver Fire, Marion Fire		Chief-Line	Joe Brabender, Rich Cowger (t)
		Chief-Planning	Ron Naber, Danny Lemer (t)
2. Date 09/06/20		3. Time 0700-1900	
4. Operational Period: Day Shift		a. Divisions/Groups	
		Beaver Fire	
		Division/Group	Alpha Manny Mendoza, Jeff Barnes (t)
		Division/Group	Bravo Mike West
5. Incident Commander and staff		Division/Group	Zulu Monitored
Incident Commander	Bob Fry	Division/Group	
Deputy IC	Jay Winfield, Paul Roose (t)	Division/Group	
Safety Officers	Marvin Carpenter, Steve Wyatt, Dean Whitney (t)	b. Divisions/Groups	
Information Officer	Penny Bertram, Jill Cobb (v), Nick Holloway (t)	Marion Fire	
Liaison Officer	Lance Burns, Chris Grove		
6. Agency Representatives		Division/Group	Mike Kris George, Jacob Jeresek (t)
Agency	Name	Division/Group	
FS Agency Admin	Brandon Knapton, Ron Tipton (t)	Division/Group	
FS Fire Staff Officer	Kevin Pfister	Division/Group	
FS AFMO	Michael Wood	Division/Group	
		Division/Group	
7. Planning Section		c. Divisions/Groups	
Chief	Will Bernard	Division/Group	
Resources Unit	Jody Pettit	Division/Group	
Check In	Nolan Baldwin (t)	Division/Group	
Demobilization Unit	Joe Read	Division/Group	
Documentation	Danny Baggao	Division/Group	
Situation Unit	Chad Ramsay, Roger Jackson (v)	Division/Group	
GIS Specialist	Andrew Mock	d. Air Operations Branch	
Fire Behavior	Eric Trimble	Air Operations Branch Director	Sal Garcia
FS Resource Advisor	Rebecca Lloyd	Air Attack Supervisor	
IT Support	Ed Yeager, Bryce Nordgren (t)	Air Support Supervisor	
		Helicopter Coordinator	
		Air Tanker Coordinator	
8. Logistics Section		10. Finance Section	
Logs Chief	Tyler Rae	Chief	Dale Harrison, Amy Waring (t)
Facilities Unit		Time Unit Leader	
Supply Unit	Bryan Connelley	Cost Unit	Liz Behrends (t)
Ordering	Cindy Wharton	Personnel	Amy Erickson (t)
Communications Unit	Tom Robbins	Equipment	Lisa Hawdon
Medical Unit	Terry Miller, Melanie Miller (t)		
Food Unit			
Ground Support Unit			
Security Unit	Peter Pappas		

Prepared by (Resource Unit Leader) Jody Pettit

Beaver Fire Weather Forecast

Spot Forecast from the National Weather Service Missoula, MT
Forecast is based on start time of 0700 PDT on Sept 6, 2020
303 PM MDT 9/5/2020

DISCUSSION . . .

Sunday temperatures will trend down and humidity will trend up compared to Saturday. Timing for the arrival of NE winds on Monday is trending later, with an afternoon frontal passage looking more likely. Winds will be strongest on ridges with good sheltering on south aspects. Snow is possible on the highest elevations but no accumulation is expected. Most precipitation is expected far to the east over the Sapphire Mountains. Precipitation is only expected with the front, so duration will only be a few hours however, higher humidity will be long lasting.

SUNDAY . . .

- * Sky/Weather.....Sunny.
- * CWR (> 0.10 Inch)...0 percent.
- * LAL.....1.
- * Max Temperature.....75-80°F.
- * Min Humidity.....20-25%.
- * Wind (20 ft).....Variable 2-5 mph becoming West 5-7 mph by afternoon.
- * Haines Index.....2 very low.

SUNDAY NIGHT . . .

- * Sky/Weather.....Clear.
- * CWR (> 0.10 Inch)...0 percent.
- * LAL.....1.
- * Min Temperature.....44-49°F.
- * Max Humidity.....30-40%.
- * Wind (20 ft).....West 5-6 mph diminishing to 2-5 mph downslope after midnight.

MONDAY (LABOR DAY) . . .

- * Sky/Weather.....Mostly Cloudy.
- * CWR (> 0.10 Inch)...40% by afternoon.
- * LAL.....1.
- * Max Temperature.....45-50°F.
- * Min Humidity.....50-60%.
- * Wind (20 ft).....NE 17-19 mph w/gusts to 28 mph.
- * Haines Index.....2 very low.
- * Precip Amount.....0.10".
- * Min Temp Monday Night.....29-35°F.

TUESDAY . . .

- * Sky/Weather.....Mostly Sunny.
- * CWR (> 0.10 Inch)...0 percent.
- * LAL.....1.
- * Max Temperature.....58-63°F.
- * Min Humidity.....30-40%.
- * Wind (20 ft).....East 7-17 mph.
- * Haines Index.....3 very low.

WEDNESDAY...Mostly Clear. Lows 36-41. Highs 69-74. Terrain driven winds to 5 mph.

THURSDAY...Mostly Clear, Lows 43-48. Highs 74-79. Terrain driven winds to 10 mph.

FRIDAY...Mostly Clear. Lows 40-50. Highs 75-85.

SATURDAY...Mostly Clear. Lows 45-55. Highs 75-85.

FIRE BEHAVIOR FORECAST

FORECAST NUMBER: 5	INCIDENT TYPE: Wildfire
FIRE NAME: Beaver/Marion	OPERATIONAL PERIOD: Sept 6, 2020 Sunday
DATE ISSUED: Sept 5, 2020	TIME ISSUED: 1800
UNIT: ID-Clear-Nez	PREPARED BY: Eric Trimble – FBAN

INPUTS

WEATHER SUMMARY:

Sky Weather: Sunny.
CWR (>0.10"): 0%
Max Temps: 75-85°
Min RH: 20-25% **Haines:** 2 (very low). **LAL:** 1
Winds: Variable 2-5 mph becoming West 5-7 mph by afternoon

FUELS:

Beaver: Mature, mixed conifer forest dominated by DF, LPP, WL, SAF, and ES; with WRC on north aspects/valley bottoms. Relatively heavy snag component. Live hardwood fuels are largely green and will discourage surface fire spread. Herbaceous fuels on the more exposed slopes are starting to cure and should support limited surface fire activity.

Marion: Dead/dying SAF, ES and LPP. Relatively heavy dead/down component.

Fine Fuels 4-6%; 10-hr: 5%; 100hr: 11%; 1000hr: 12%

ERC: 80th percentile

OUTPUTS - FIRE BEHAVIOR

GENERAL:

Expect active surface fire activity particularly within jackpots of down/woody material on the Beaver Fire. Spruce/sub-alpine fir, multi-story stands will favor single to small group tree torching combined with short uphill runs. Fire will follow terrain and fuels. Live hardwood surface fuels will generally discourage fire growth.

Backing spread around 1-2 ft/min with flames 2-4 ft. Head fire will have 4-6 ft. flame lengths and 5-8 ft/min rates of spread, higher with torching. Spotting is expected to be short range, although longer range (¼-½ mi) spotting is possible if a stronger run or higher winds occur.

Probability of Ignition (PIG): 60-70% during the peak of the burning period.

SPECIFIC:

Beaver – Expect moderate surface fire behavior, primarily single and small group-tree torching, backing and flanking. Fire will continue to move upslope/up-canyon and to the ENE.

Marion Fire – Primarily creeping and smoldering with limited surface fire activity and isolated torching.

AIR OPERATIONS: Expect poor visibility with light afternoon turbulence.

SAFETY: Maintain good situational awareness with the continuation of warm/dry conditions. Conditions remain conducive for torching and short-range spotting.

ASSIGNMENT LIST		1. Branch	2. Division/Group			
3. Incident Name		4. Operational Period		Alpha		
Beaver Fire		Date: 09/06/20		Time: 0700-1900		
5. Operations Personnel						
Operations Chief	Joe Brabender, Rich Cowger (t)		Division/Group Supervisor	Manny Mendoza, Jeff Barnes (t)		
Branch Director			Air Support Group Supervisor	Sal Garcia		
6. Resources Assigned This Period						
Strike Team/Task Force/ Resource Designator	Last Shift	Leader	No. Pers.	Trans. Needed	Drop Off PT./Time	Pick Up PT./Time
O-12 TFLD	9/18	Jacob Cafferty	1	N		
O-15 TFLD (t)	9/17	Clint Dean	1	N		
C-4 TY2IA NCF	9/17	Walhlberg, Schaeffer (t)	17	N		
C-5 TY2IA Palouse	9/18	Cody Cline, Chad Borg (t)	18	N		
E-44 ENG6 Peanut Pie	9/19	James Maher	3	N		
E-45 ENG6 Firebrand	9/19	Lauren Bendel	3	N		
E-46 WTS2 Smith20	9/17	Stephen Roach	1	N		
E-47 WTS2 Andrews Fire Service	9/17	Brian Palmer	1	N		
O-16 HEQB	9/17	Robbie Easley	1	N		
O-33 HEQB (t)	9/18	Andrew Brown	1	N		
O-11 EMTF	9/17	Jessica Tullus	1	N		
E-39 AMR NW	9/17	Patterson, Amback	2	N		
7. Control Operations						
<p>Task: Brush and open existing road system from Round Top RAWs site to the West and South to tie into the 368 Road. Create fuel break from 368 road to tie in with existing fuel break.</p> <p>Purpose: Create and improve containment line to keep fire South and East of private property and the Round Top RAWs.</p> <p>End State: Fuel break has been completed from the 368 road to Round Top RAWs. (Estimate time frame 8 shifts.)</p>						
8. Special Instructions						
<p>Coordinate with Beaver Ridge Lookout for fire activity information. LCES shall be in place prior to engaging fire. All COVID-19 mitigation protocols shall be followed. Identify potential medivac locations.</p>						
9. Division/Group Communication Summary						
Function	Frequency - RX	Frequency - TX	Tone	Channel	Comments	
TAC 6	168.0500 N	168.0500 N	136.5	6		
A/G	167.1250 N	167.1250 N		15		
CMD 1	170.0000 N	166.6750 N	136.5	1		
CMD 2	170.6875 N	166.5750 N	136.5	2		
Prepared by (RESL)		Approved by (PSC2)		Date	Time	
Jody Pettit		Will Bernard		09/05/20	2000	

AIR OPERATIONS SUMMARY (ICS 220)

1. Incident Name: Beaver ID-NCF-000552 Marion ID-NCF-000508	2. Operational Period: Date From: Sept. 6, 2020 Date To: Sept. 6, 2020 Time From: 0630 Time To: 2030	3. Sunrise: 0613 Sunset: 1911	
4. Remarks (safety notes, hazards, air operations special equipment, etc.): Aviation requirement will be reviewed and applied where needed. Consider the safety and risk analysis while planning and ordering A/C With the current fire situation, A/C availability will be shared as needed, unless assigned to the specific incident. A/C request will be approved and ordered accordingly - dispatch		5. Ready Alert Aircraft: Medivac: 1HQ Short Haul Helicopter New Incident: Two Bear Air-(Hoist @	
7. Personnel: Air Operations Branch Director Air Support Group Supervisor Air Tactical Group Supervisor Helicopter Coordinator Helibase Manager	Name: Sal Garcia N/A Sharing with Forest Sharing with Forest N/A at this time	Phone Number: 760 310-0138	AM FM 127.0750 A-10 167.1250 A-9 Plan 168.6250
8. Frequencies: Air/Air Fixed-Wing Air/Air Rotary-Wing - Flight Following Air/Ground Command Deck Coordinator Take-Off & Landing Coordinator Air Guard			
9. Fixed-Wing (category/kind/type, make/model, N#, base): Air Tactical Group Supervisor Aircraft: A/C avail. at Grangeville Airport / Helibase Air Attack - primary AA-117 (N44NC) Other Fixed-Wing Aircraft: Seats - T-882 @ GIC & T-835 @ GIC			
10. Helicopters (use additional sheets as necessary):			
FAA N# Via Dispatch H-974H HB-116 HG-562AJ	Category/Kind/Type A/C availability T3 T1 T1 Helicopter are based	Make/Model Not assigned to Inc. Bell 407 Kaman Aero K-1200 CH-47D in Grangeville	Base For Planning Located at Grangeville - Airport Availability as needed
Start 0800 0800 0800	Available Available Local Available Local Available Local on request	Remarks Order through dispatch Order through dispatch Order through dispatch	
11. Prepared by: Name: <u>Sal Garcia</u> Position/Title: <u>AOBD</u> Signature: _____ Date/Time: <u>9/5/2020 - 1909</u>			

INCIDENT RADIO COMMUNICATIONS PLAN		Incident Name BEAVER FIRE			Date/Time Prepared 9/5/2020 1600		Operational Period Date/Time 9/6/2020 0700 - 9/7/2020 0700		
Ch #	Function	Channel Name	Assignment	RX Freq N or W	RX Tone	TX Freq N or W	Tx Tone	Mode	Remarks
1	Repeater	Command 1	All Resources	170.0000 N	136.5	166.6750 N	136.5	A	To Communications
2	Repeater	Command 2	All Resources	170.6875 N	136.5	166.5750 N	136.5	A	To Communications
3									
4									
5									
6	Tactical	TAC 6	DIV A	168.0500 N	136.5	168.0500 N	136.5	A	NIFC Tac
7	Tactical	TAC 7	DIV B	168.2000 N	136.5	168.2000 N	136.5	A	NIFC Tac
8	Tactical	TAC 8	DIV Z	168.6000 N	136.5	168.6000 N	136.5	A	NIFC Tac
9	Tactical	Tac 9	DIV M	166.7250 N	136.5	166.7250 N	136.5	A	NIFC Tac
10	Tactical	TAC 10	Unassigned	166.7750 N	136.5	166.7750 N	136.5	A	NIFC Tac
11	Tactical	Tac 11	Logging	168.2500 N	136.5	168.2500 N	136.5	A	NIFC Tac
12	Local	E Beaver Ridge	I/A	171.5750 N		166.2625 N	100.0	A	NFS Repeater
13	Local	N Rocky Ridge	I/A	171.5750 N		166.2625 N	162.2	A	NFS Repeater
14									
15	Air/Ground	A/G Primary	All	167.1250 N		167.1250 N		A	NIFC A/G Primary
16	Air Guard	Air Guard	All	168.6250 N		168.6250 N	110.9	A	Emergency
Prepared By (Communications Unit)		Thomas Robbins COML <i>Thomas Robbins</i>			Incident Location Powell ID				

The convention calls for frequency lists to show four digits after the decimal place, followed by either an "N" or a "W", depending on whether the frequency is narrow or wide band. Mode refers to either "A" or "P" indicating analog or digital (e.g. Project 25) or "M" indicating mixed mode. All channels are shown as if programmed in a control station, mobile or portable radio. Repeater and base stations must be programmed with the Rx and Tx reversed.

INCIDENT:*Beaver Fire and Marion Fire***DATE:***September 6, 2020***TIME:***Day 0700-1900*

SAFETY MESSAGE

SAFETY IS OUR FIRST PRIORITY

Fire fighter safety comes first on every fire, every time

SAFETY QUOTE:

*“Martin Luther King had a dream, as do I.
That at the end of fire season all firefighters will go home safely.”
Marvin Carpenter, Northern Rockies team 6, team safety*

HAZARDS and RISKS:

- Gravel trucks working in and out of Base camp.
- Communications
- Hazard trees and snags
- Working around heavy equipment
- Driving hazards, dust on gravel, speed on blacktop, other drivers
- Cold weather approaching, hypothermia, camp crud

Before engaging analyze all risks and mitigate them to the best of your ability.

Please do your part to ensure everyone goes home safely!

Use safe practices during off time.

Practice safe driving techniques, seat belts, head lights, rest breaks.

Practice COVID mitigations, wash hands often, wear a face mask, keep a minimum of 6 feet spacing when not wearing a mask.

Don't feed bears or ride buffalos.

SAFETY

**There is no U in Safety. U must insert U into safety. It does not just happen by accident. (pun intended)
U must believe in safety, U must live it, U must practice it, otherwise it is just a word without U in it.**

Your Safety Team....

Marvin Carpenter, Steve Wyatt, Dean Whitney (T)

And each of YOU!!

MEDICAL PLAN (ICS 206 WF)

1. Incident/ project name and address:	2. Operational Period: Date/Time
Beaver Powell Idaho	9-6-20 0700-1900

3. Ambulance Services

Name	Complete address	Phone & EMS Frequency	ALS ✓
Missoula Ambulance Service INC	2600 Palmer St Missoula, MT 59808	406-549-2325	X
Powell QRU	Powell Ranger Station	911	
AMR Ambulance	Division A	Command	

4. Air Ambulance Services

Name	Location/remarks	Phone & EMS Frequency	ALS ✓	hoist ✓	night ✓
Life Flight Network	Missoula, MT/Sand Point, ID/Butte	911 406-829-7070	X		
Alert Air Ambulance	Kalispell, MT	911 406-752-5111	X		X
Two Bear Air	Whitefish, MT	911 406-297-2121		X	X

5. Hospitals

Name and Address	Phone	Level of care	Heli Pad ✓	If Helipad, Lat./Long. (DD mm.mmm') Datum WGS84	Travel time to hosp: min's Air Ground
Eastern Idaho Regional Medical Center 3100 Channing Way Idaho Falls, ID 83404	208-529-6111	Trauma II Burn center	X	N 43 28' 30" W 111 59' 53"	285
St. Patrick Hospital 500 Broadway Missoula, MT	406-543-7271	Trauma II	X	N 46 52.524 W 113 59.969	68
Community Medical Center 2827 Ft. Missoula Rd Missoula, MT	406-728-4100	Trauma III	X	N 46 50.909 W 114 02.865	64

6. Area Location Capability

Branch, Div, Group	Aid Station Name; Responders	Equipmen t available	Emergenc y frequency	Ambulance ETA to site: min's Air Ground	Nearby Helispot &/or DP	Helispot &/or DP lat/long (DD mm.mmm') Datum WGS 84
Powell Ranger Station	MEDL/EMPF Teri Miller MEDL(t) Melanie Miller	ALS				
Division A	Jessica Tullis	EMTF				
Powell FOB/spike	Rosemary Meyers	AEMT				
Division A	Jerry Patterson 509-999-0457 Josh Amback 509-688-7593	EMPF EMTF				

7. Notes, special procedures: Use Medical Incident Report for medical response and Medical Incident Pre-Planning worksheet for briefing. Medical Emergencies should be reported in accordance with Lolo/Kootenai Forest procedures.

8. Prepared by (Medical Unit Leader)	9. Date/Time	10. Reviewed by (Safety Officer)	11. Date/Time
Teri Miller	9/5/20 1700	Steve Wyatt	9/5/20 1700

ICS-206 COVID-19 PLAN	1. Incident Name Beaver Fire	2. Date Prepared 9-5-20	3. Time Prepared	4. Operational Period
---------------------------------	--	-----------------------------------	------------------	-----------------------

INCIDENT MEDICAL AID STATIONS

MEDICAL AID STATION	LOCATION	ISOLATION?	
		YES	NO
Covid precheck in screening	Base camp/spike		X
Daily screening-road check	Powell Ranger Station	X	
Daily self checks	ICP		X

LOCAL SUPPORT

A. OFF-SITE ISOLATION FACILITIES

NAME	LOCATION	PHONE	MEDICAL	
			YES	NO
Hotels in Missoula, MT	Contact SWZ COVID logistics	406-540-2965		X

COVID SCREENING PROCEDURES

ICP		medical	
		ALS	BLS
BASE CAMP SPIKE	Covid precheck screening prior to checking in to fire Daily covid self check screening for all modules		X
MEDICAL UNIT-Powell Ranger Stations	Daily covid screening prior to briefing Cold/warm/hot medical units present (on site isolation present)	X	

TESTING FACILITIES

NAME	ADDRESS	Appointment required		Phone	Days operation		Hours operation	
		Yes	No		Work day	Week end	WD	WE
Community Medical Center Rapid tes outpatient lab	2827 Fort Missoula rd Missoula MT	X		406-327-4378	M-F	Sat	0630 1730	0830 1330
Missoula City-county Health depart	4025 flynn lane Missoula MT	X		406-258-4770	M-F	NA	0900 1600	NA
Clearwater Valley Hospital Orfino, ID	301 Cedar ST Orfino, Id		X	hospital 208-476-4555 Lab 208-476-8035	M-F	Sat	0900 1700	0900 1700

COVID-19 PROCEDURES

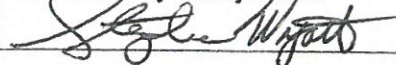
Field Screenings-self check screening. Postive Symptoms? Isolate patient, notify MEDL follow instuctions given.

First aid station Screening. Postive symtoms? Isolate patient Notify MEDL, follow instructions

Notes: Isolation can take place in a vehicle short term or at Medical unit. Vehicle to be completely disinfected afterward before use. MEDL can assist contractors with Information. Expectations that Module of 1 concepts will be followed. See list of Covid expectations given to all resources upon checkin and follow. Nearest/reccomended testing is at Community Medical Center rapid 2 hour results.

Prepared by medical unit leader
Teri Miller 406-544-3070

Reviewed by safety officer



ASSIGNMENT-SPECIFIC MEDICAL EMERGENCY ACTION PLAN

Pre-Planning for today's assignment

What are the likely hazards that could cause injuries? What kind of severe injuries?		
Who is the likely in-charge DIVS or overhead for an emergency in your assigned area today? (i.e. "Division Zulu")		
Who are the Medical personnel assigned to your part of the incident? What are their capabilities?		
Other Emergency Responders: fire dept., crash rescue, ambulance?		
Communications: Command channel, Air to Ground, Medical helicopters, local rescue/medical?		
Transportation methods available	Ground vehicle, drop point, coordinates, travel route?	
	Aircraft I.D, Helispot names, coordinates? Hoist capable, internal transport	
	Other available methods - contingency	
Most likely workforce for evacuation		

Response checklist

Who takes charge?

- DIVS or designated Overhead manages the overall scene and evacuation process.
- Medical personnel and emergency responders manage patients and assist in rescue/extrication.
- OPS and IC make command decisions so the emergency can be given full attention and management. They continue to manage ongoing incident operations.

Response sequence:

- First, secure the scene and protect responders and patients from further injury. Render first aid.
- Clear the Command channel for "Emergency Traffic only" if this is a critical emergency. If not, inform Communications of non-critical-emergency status and use normal communications.
- Contact closest Medical personnel and DIVS or designated Overhead for response.

Information for Communications: Medical Incident Report – See last page of IAP and IRPG pages 118 and 119.

Helicopter Extraction Operations: See IRPG pages 116 and 117.

Severe Weather: In the event of forecasted severe weather, implement Incident Severe Weather Plan.

Incident Within Incident: Upon arriving at the incident, all overhead should obtain and review the team's Incident Within Incident Plan.

BEAVER FIRE - MARION FIRE

Telephone List

9/5/2020

IC	BOB FRY	406-431-0102
DEP IC	JAY WINFIELD	208-993-0768
DEP IC (T)	PAUL ROOSE	406-640-1337
LOFR	CHRIS GROVE	406-381-7600
INFORMATION	PENNY BERTRAM	406-239-3970
OPS PLANNING	RON NABER	406-640-1614
OPS LINE	JOE BRABENDER	406-691-0369
SAFETY	MARVIN CARPENTER	406-594-5728
	STEVE WYATT	406-437-8386
	DEAN WHITNEY (T)	208-755-5956
PLANS CHIEF	WILL BERNARD	919-619-1408
RESL (POWELL DEMOB)	JODY PETTIT	208-290-8840
DEMOB	JOE READ	406-253-1130
CHECK IN	NOLAN BALDWIN	406-396-0074
DOCUMENTATION	DAN BAGGAO	575-910-7179
SITL	CHAD RAMSAY	208-290-2253
ITSS	ED YEAGER	818-360-2519
PLANS OFFICE - POWELL		208-942-3123
		208-942-3133
FINANCE CHIEF	DALE HARRISON	715-499-1457
	AMY WARING	406-579-5041
COMP/CLAIMS	AMY ERICKSON	406-207-3516
LOGS	TYLER RAE	406-425-1038
SPIKE MGR	IAN GARTHWAIT	202-272-5020
ORDERING	CINDY WHARTON	423-341-1243
SECURITY MGR	PETER PAPPAS	319-333-8877
COML	TOM ROBBINS	406-698-7500
INCM	BOB PEARSON	949-874-0586
MEDICAL	TERI MILLER	406-544-3070
MEDL (T)	MELANIE MILLER	406-546-0598

HOW TO SUBMIT YOUR TIME

Resources have 3 options

1. Fill out your CTR/Shift Ticket and have your supervisor sign. Place in box provided at morning briefing.
2. Fill out your CTR/Shift Ticket, have your supervisor sign, take a picture of it and email to Finance. On subject line put your: Last name (if CTR) or Contractor name (if Shift Ticket), and the word, Time. Email to: lisa_hawdon@firenet.gov
3. Fill out a fillable CTR/Shift Ticket, email it to your supervisor to sign and your supervisor emails it to Finance. On subject line put: Last name (if CTR) or Contractor name (if Shift Ticket), and the word, Time. Email to: lisa_hawdon@firenet.gov

If you would like a fillable CTR/Shift Ticket, email: lisa_hawdon@firenet.gov
Subject: Fillable Form. Within body message, state what form you would like and we will reply back to you with the electronic form.

If you are with the Montana DNRC, same as above, and state whether you would like the fillable Emergency Personnel & Equipment Shift Ticket (Combined form) or would like the individual CTR/Shift Ticket.

Fillable = Electronic

Please include your cell phone number in remarks

Note: Ensure your CTR or Shift ticket has a Supervisor's signature and show meal breaks.

Please do not wait to turn in your time. Please submit asap. We never know when resources could be moved to a higher priority fire and that will really slow down the reassignment process especially in this remote environment.

Camp Map

Beaver

ID-NCF-000552

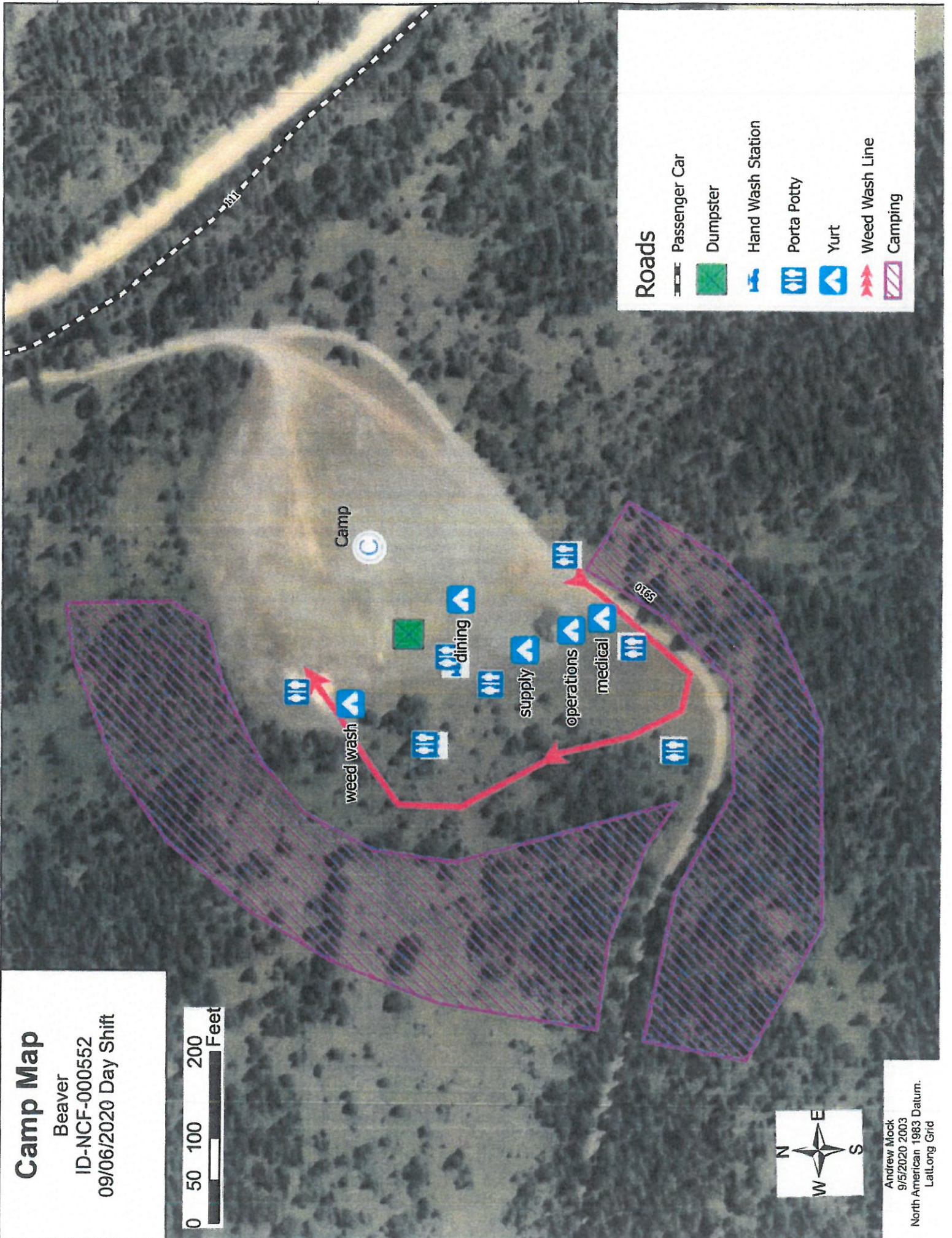
09/06/2020 Day Shift

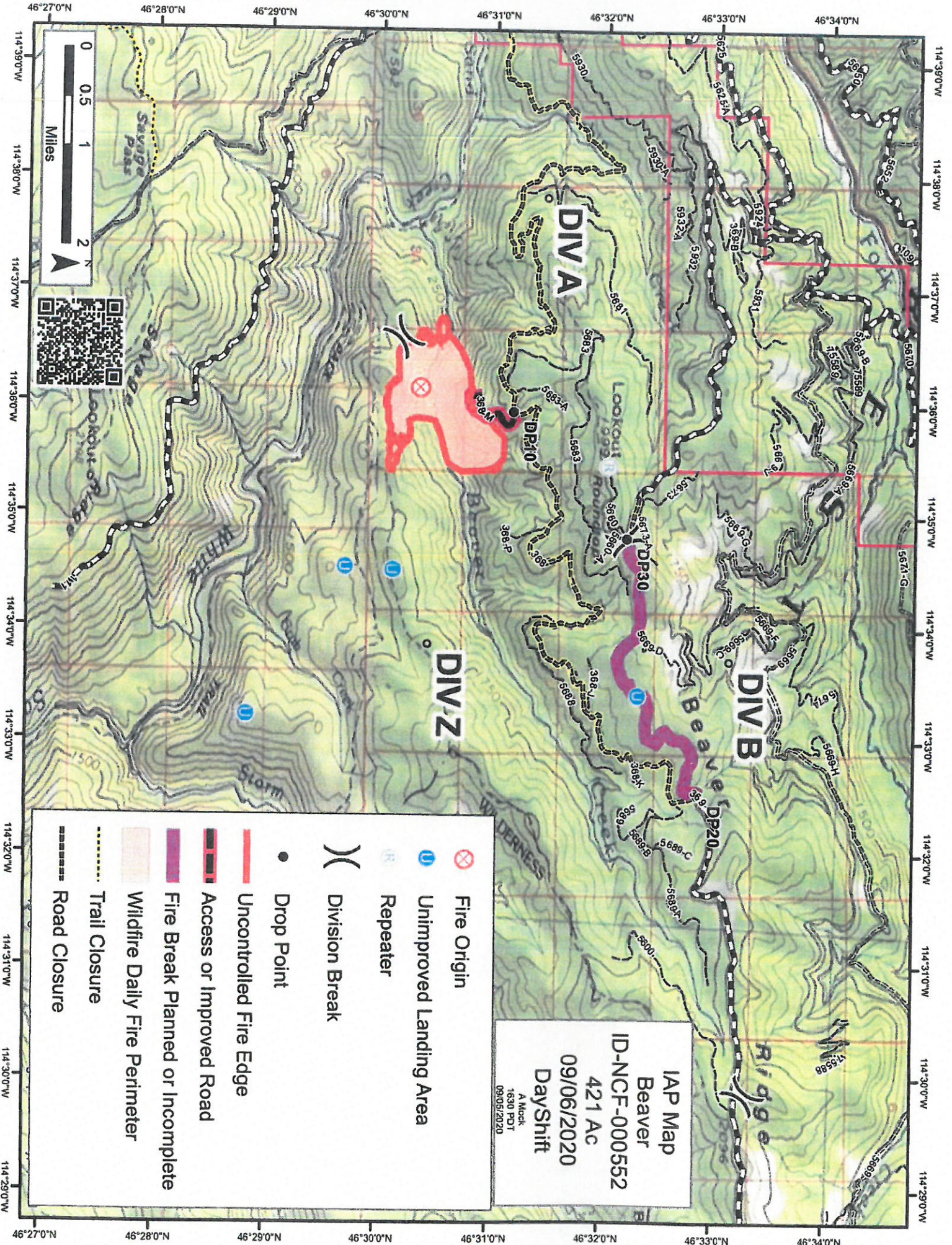


Andrew Mock
9/5/2020 2003
North American 1983 Datum.
LatLong Grid

Roads

- Passenger Car
- Dumpster
- Hand Wash Station
- Porta Potty
- Yurt
- Weed Wash Line
- Camping

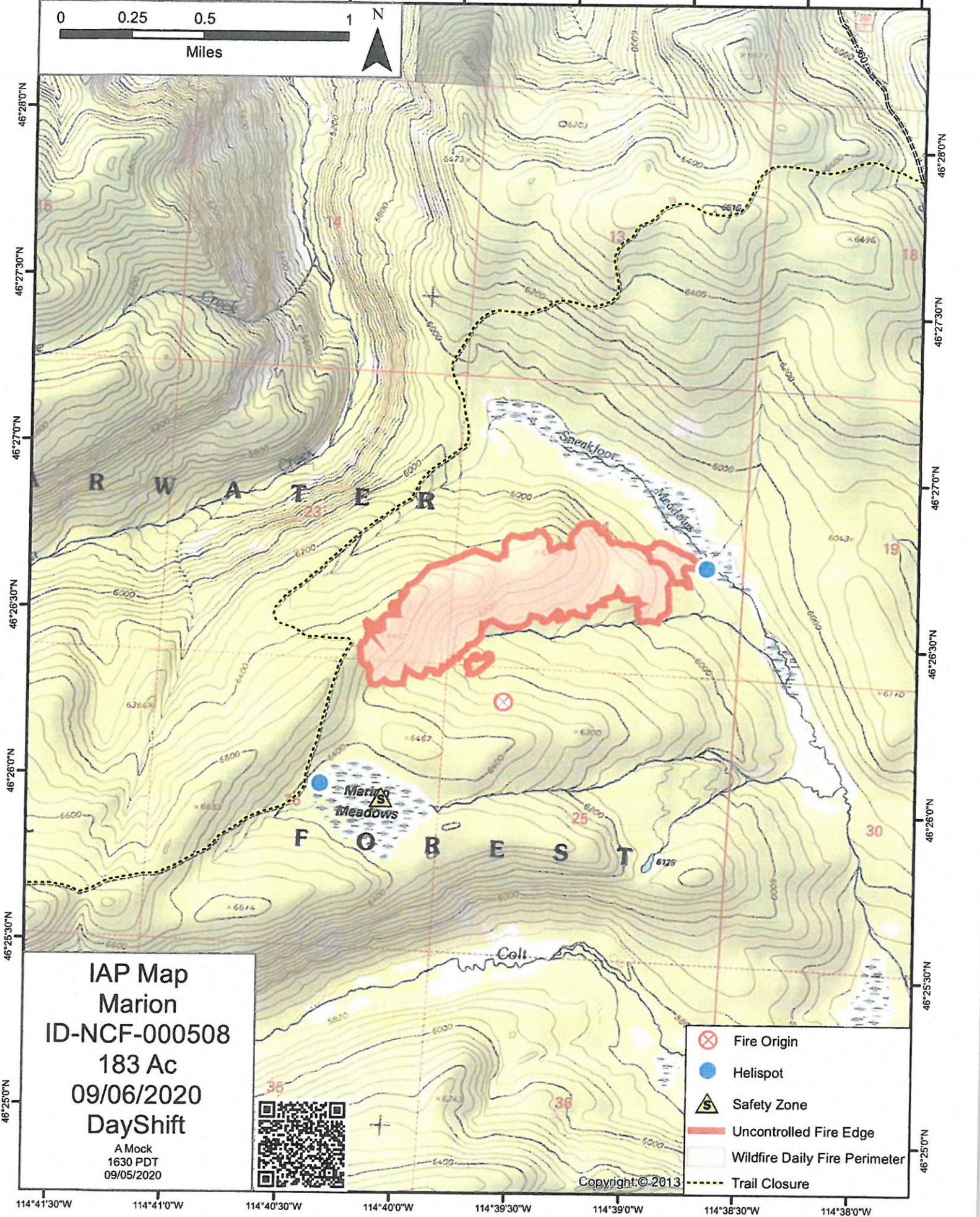
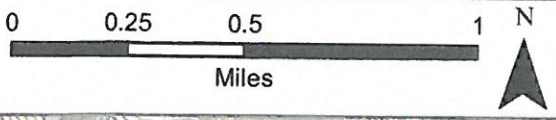




- Fire Origin
- Unimproved Landing Area
- Repeater
- Division Break
- Drop Point
- Uncontrolled Fire Edge
- Access or Improved Road
- Fire Break Planned or Incomplete
- Wildfire Daily Fire Perimeter
- Trail Closure
- Road Closure

IAP Map
 Beaver
 ID-NCF-000552
 421 Ac
 09/06/2020
 DayShift
 A Mock
 1630 PPT
 09/05/2020

114°41'30"W 114°41'0"W 114°40'30"W 114°40'0"W 114°39'30"W 114°39'0"W 114°38'30"W 114°38'0"W



IAP Map
Marion
ID-NCF-000508
183 Ac
09/06/2020
DayShift

A Mock
1630 PDT
09/05/2020



- Fire Origin
- Helispot
- Safety Zone
- Uncontrolled Fire Edge
- Wildfire Daily Fire Perimeter
- Trail Closure

Copyright © 2013

114°41'30"W 114°41'0"W 114°40'30"W 114°40'0"W 114°39'30"W 114°39'0"W 114°38'30"W 114°38'0"W

MEDICAL PLAN (ICS 206 WF)

Controlled Unclassified Information//Basic

Medical Incident Report

FOR A NON-EMERGENCY INCIDENT, WORK THROUGH CHAIN OF COMMAND TO REPORT AND TRANSPORT INJURED PERSONNEL AS NECESSARY.

FOR A MEDICAL EMERGENCY: IDENTIFY ON SCENE INCIDENT COMMANDER BY NAME AND POSITION AND ANNOUNCE "MEDICAL EMERGENCY" TO INITIATE RESPONSE FROM IMT COMMUNICATIONS/DISPATCH.

Use the following items to communicate situation to communications/dispatch.

1. CONTACT COMMUNICATIONS / DISPATCH (Verify correct frequency prior to starting report)
 Ex: "Communications, Div. Alpha. Stand-by for Emergency Traffic."

2. INCIDENT STATUS: Provide incident summary (including number of patients) and command structure.
 Ex: "Communications, I have a Red priority patient, unconscious, struck by a falling tree. Requesting air ambulance to Forest Road 1 at (Lat./Long.) This will be the Trout Meadow Medical, IC is TFLD Jones. EMT Smith is providing medical care."

Ex: "Communications, I have a Red priority patient, unconscious, struck by a falling tree. Requesting air ambulance to Forest Road 1 at (Lat./Long.) This will be the Trout Meadow Medical, IC is TFLD Jones. EMT Smith is providing medical care."

Severity of Emergency / Transport Priority	<input type="checkbox"/> RED / PRIORITY 1 Life or limb threatening injury or illness. Evacuation need is IMMEDIATE Ex: Unconscious, difficulty breathing, bleeding severely, 2° - 3° burns more than 4 palm sizes, heat stroke, disoriented. <input type="checkbox"/> YELLOW / PRIORITY 2 Serious Injury or illness. Evacuation may be DELAYED if necessary. Ex: Significant trauma, unable to walk, 2° - 3° burns not more than 1-3 palm sizes. <input type="checkbox"/> GREEN / PRIORITY 3 Minor Injury or illness. Non-Emergency transport Ex: Sprains, strains, minor heat-related illness.	
Nature of Injury or Illness & Mechanism of Injury		Brief Summary of Injury or Illness (Ex: Unconscious, Struck by Falling Tree)
Transport Request		Air Ambulance / Short Haul/Hoist Ground Ambulance / Other
Patient Location		Descriptive Location & Lat. / Long. (WGS84)
Incident Name		Geographic Name + "Medical" (Ex: Trout Meadow Medical)
On-Scene Incident Commander		Name of on-scene IC of Incident within an Incident (Ex: TFLD Jones)
Patient Care		Name of Care Provider (Ex: EMT Smith)

3. INITIAL PATIENT ASSESSMENT: Complete this section for each patient as applicable (start with the most severe patient)

Patient Assessment: See IRPG page 106

Treatment:

4. TRANSPORT PLAN:

Evacuation Location (if different): (Descriptive Location (drop point, intersection, etc.) or Lat. / Long.) Patient's ETA to Evacuation Location:

Helispot / Extraction Site Size and Hazards:

5. ADDITIONAL RESOURCES / EQUIPMENT NEEDS:

Example: Paramedic/EMT, Crews, Immobilization Devices, AED, Oxygen, Trauma Bag, IV/Fluid(s), Splints, Rope rescue, Wheeled litter, HAZMAT, Extrication

6. COMMUNICATIONS: Identify State Air/Ground EMS Frequencies and Hospital Contacts as applicable

Function	Channel Name/Number	Receive (RX)	Tone/NAC *	Transmit (TX)	Tone/NAC *
COMMAND					
AIR-TO-GRND					
TACTICAL					

7. CONTINGENCY: Considerations: If primary options fail, what actions can be implemented in conjunction with primary evacuation method? Be thinking ahead.

8. ADDITIONAL INFORMATION: Updates/Changes, etc.

REMEMBER: Confirm ETA's of resources ordered. Act according to your level of training. Be Alert. Keep Calm. Think Clearly. Act Decisively.