

Beaver Fire

ID-NCF-000552

P1NJD8 (0117)

710044

Marion Fire

ID-NCF-000508

P1EKT520 (0117)



Team Intent

Cooperation

The affected people with common goals have similar insights, ideas and vision of a team. The strength of a team is dependent on the ability to integrate their insights, ideas and vision, along with ours, utilizing our strengths and overcoming our weaknesses. Build a team of teams.

Incident Action Plan

Friday

September 4, 2020

Operational Period 0700 – 1900

INCIDENT OBJECTIVES1. Incident Name
Beaver Fire, Marion Fire2. Date Prepared
09/03/20203. Time Prepared
2100

4. Objectives

High Value Assets and Resources to be Protected:

Public and first responder health from COVID-19; community of Powell and associated private inholdings/property; smoke sensitive communities, including Missoula and the Bitterroot valley; public and private timber lands.

Leader's Intent:

- Protect human life. Firefighter and public safety will be given the highest priority at all times.
- Minimize the exposure of the public and responders to transmission or infection from COVID-19 by following CDC, county and NPCNF measures relating to social distancing, masks and cleaning procedures.
- Establish and maintain information sharing networks with communities potentially impacted by smoke.
- Manage smoke, while providing for public safety, to provide for desirable air quality and visibility.
- Minimize fire impacts to Whitebark pine seed collection trees.
- Manage any portion of the fire located within a wilderness area using strategies and tactics that are commensurate with wilderness values.
- Take appropriate measures to reduce chances of noxious weed spread onto the forest, including weed wash of vehicles before entering the incident area and when demobilizing.
- Commit incident resources only where there is a high probability of meeting reasonable objectives or when the risk of injury or death can be mitigated.
- Maintain and foster relationships with users of public lands, landowners, agencies and local communities.
- Adhere to applicable work-rest guidelines to reduce fatigue and ensure that assigned fire-fighting personnel receive adequate rest.
- Maintain a workplace and atmosphere of mutual respect and free of any harassment. There will be no tolerance for any unethical, illegal drug or alcohol related incidents.
- Effectively manage costs commensurate with the high value assets and resources to be protected and risks..
- Efficiently demobilize resources in a manner that will ensure safe travel and "right-sizing" consistent with demobilization glidepath direction.

Operational Objectives:

The incident will be managed utilizing contain/confine and point protection strategies.

5. Prepared By (Planning Section Chief)
Will Bernard:6. Approved By (Incident Commander)
Bob Fry:

ORGANIZATION ASSIGNMENT LIST		9. Operations Section		
1. Incident Name Beaver Fire, Marion Fire		Chief-Line	Joe Brabender, Rich Cowger (t)	
		Chief-Planning	Ron Naber, Danny Lemer (t)	
		a. Divisions/Groups		
2. Date 09/03/20	3. Time 0700-1900		Beaver Fire	
4. Operational Period: Day Shift		Division/Group	Alpha	Manny Mendoza, Jeff Barnes (t)
		Division/Group	Bravo	Mike West
5. Incident Commander and staff		Division/Group	Charlie	Monitored
Incident Commander	Bob Fry	Division/Group	Zulu	Monitored
Deputy IC	Jay Winfield, Paul Roose (t)	Division/Group		
Safety Officers	Marvin Carpenter, Steve Wyatt, Dean Whitney (t)	b. Divisions/Groups		
Information Officer	Penny Bertram, Jill Cobb (v), Nick Halloway (t)		Marion Fire	
Liaison Officer	Lance Burns, Chris Grove			
6. Agency Representatives		Division/Group	Mike	Kris George, Jacob Jeresek (t)
Agency	Name	Division/Group		
FS Agency Admin	Brandon Knapton, Ron Tipton (t)	Division/Group		
FS Fire Staff Officer	Kevin Pfister	Division/Group		
FS AFMO	Michael Wood	Division/Group		
		Division/Group		
		c. Divisions/Groups		
7. Planning Section				
Chief	Will Bernard	Division/Group		
Resources Unit	Jody Pettit	Division/Group		
Check In	Nolan Baldwin (t)	Division/Group		
Demobilization Unit	Joe Read	Division/Group		
Documentation	Danny Baggao	Division/Group		
		Division/Group		
Situation Unit	Chad Ramsay, Roger Jackson	d. Air Operations Branch		
GIS Specialist	Andrew Mock	Air Operations Branch Director	Sal Garcia	
Fire Behavior	Eric Trimble	Air Attack Supervisor		
FS Read	Rebecca Lloyd	Air Support Supervisor		
FS Resource Advisor		Helicopter Coordinator		
IT Support	Ed Yeager, Bryce Nordgren (t)	Air Tanker Coordinator		
8. Logistics Section		10. Finance Section		
Logs Chief	Tyler Rae	Chief	Dale Harrison, Amy Waring (t)	
Facilities Unit		Time Unit Leader		
Supply Unit	Bryan Connelley	Cost Unit	Liz Behrends (t)	
Ordering	Cindy Wharton	Personnel	Amy Erickson (t)	
Communications Unit	Tom Robbins	Equipment	Lisa Hawdon	
Medical Unit	Terry Miller, Melanie Miller (t)			
Food Unit				
Ground Support Unit				

Prepared by (Resource Unit Leader) Jody Pettit

Beaver Fire Weather Forecast

Spot Forecast from the National Weather Service Missoula – 207 PM MDT 9/3/2020 for 0700 on 9/4/2020

DISCUSSION . . .

Friday should see warmer and dryer conditions. Winds are expected to be light and variable/terrain-driven. A tightening pressure gradient will bring gusty W-SW winds on Saturday and Sunday. Monday will be the start of a major pattern change as a Canadian low pressure system slides out of Alberta. The fire area should begin to see 10-15 mph winds w/gusts to 25 mph from the NE by noon. Winds should diminish on Tuesday. Chance of a wetting rain (0.10") is 50/50.

FRIDAY . . .

- * Sky/Weather.....Mostly sunny.
- * CWR (> 0.10 Inch)...0 percent.
- * LAL.....1.
- * Max Temperature.....82-87°F.
- * Min Humidity.....16-21%.
- * Wind (20 ft).....Variable 2-4 mph becoming SW at 5 mph by afternoon.
- * Haines Index.....5 moderate.

FRIDAY NIGHT . . .

- * Sky/Weather.....Clear.
- * CWR (> 0.10 Inch)...0 percent.
- * LAL.....1.
- * Min Temperature.....50-55°F.
- * Max Humidity.....55-60%.
- * Wind (20 ft).....SW at 5 mph.

SATURDAY . . .

- * Sky/Weather.....Partly Cloudy.
- * CWR (> 0.10 Inch)...0 percent.
- * LAL.....1.
- * Max Temperature.....84-89°F.
- * Min Humidity.....15-20%.
- * Wind (20 ft).....South at 5 mph becoming West 5-14 mph w/gusts to 20 mph by afternoon.
- * Haines Index.....4 low.

SATURDAY NIGHT . . .

- * Sky/Weather.....Clear.
- * CWR (> 0.10 Inch)...0 percent.
- * LAL.....1.
- * Min Temperature.....50-55°F.
- * Max Humidity.....50-55%.
- * Wind (20 ft).....SW 5-14 mph w/gusts to 25 mph becoming West 10-12 mph after midnight.

SUNDAY . . .

- * Sky/Weather.....Sunny.
- * CWR (> 0.10 Inch)...0 percent.
- * LAL.....1.
- * Max Temperature.....76-81°F.
- * Min Humidity.....19-24%.
- * Wind (20 ft).....West 5-7 mph w/gusts to 20 mph in the afternoon.
- * Haines Index.....4 low.

MONDAY...Cooler, mostly cloudy – CWR 50%; Min temps 46-51°F. Highs 61-66°F. Winds - NW at 5-10 mph becoming NE at 10-15 mph in the evening.

TUESDAY...Mostly Clear, Slight chance of rain. Lows 33-38. Highs 61-66. NE winds 10-12 mph.

WEDNESDAY...Mostly clear. Lows 40-50. Highs 70-80.

THURSDAY...Mostly clear. Lows 50-60. Highs 75-85.

FIRE BEHAVIOR FORECAST

FORECAST NUMBER: 3	INCIDENT TYPE: Wildfire
FIRE NAME: Beaver/Marion	OPERATIONAL PERIOD: Sept 4, 2020 Friday
DATE ISSUED: Sept 3, 2020	TIME ISSUED: 1800
UNIT: ID-Clear-Nez	PREPARED BY: Eric Trimble – FBAN

INPUTS

WEATHER SUMMARY:

Sky Weather: Mostly sunny.

Max Temps: 82-87°

Min RH: 16-21% **Haines:** 5 (moderate). **LAL:** 1

Winds: Variable 2-4 mph becoming SW at 5 mph by afternoon

FUELS:

Beaver: Mature, mixed conifer forest dominated by DF, LPP, WL, SAF, and ES; with WRC on north aspects/valley bottoms. Relatively heavy snag component. Live fuels are still green and will discourage surface fire spread. Herbaceous Live fuels on the more exposed slopes are starting to cure and should support limited surface fire activity.

Marion: Dead/dying SAF, ES and LPP. Relatively heavy dead/down component.

Fine Fuels 3-5%; 10-hr: 8%; 100hr: 12%; 1000hr: 12%

ERC: 90th percentile & trending upward.

OUTPUTS - FIRE BEHAVIOR

GENERAL:

Expect active surface fire activity particularly within jackpots of down/woody material on the Beaver Fire. South aspects and steep slopes will favor single to small group tree torching combined with short uphill runs. Fire will follow terrain and fuels. Live fuels will generally discourage fire growth.

Backing spread around 1-2 ft/min with flames 2-4 ft. Head fire will have 4-8 ft. flame lengths and 15-20 ft/min rates of spread, higher with torching. Spotting is expected to be short range, although longer range (¼-½ mi) spotting is possible if a stronger run or higher winds occur.

Probability of Ignition (PIG): 70-80% during the peak of the burning period.

SPECIFIC:

Beaver – Expect moderate surface fire behavior, primarily single and small group-tree torching, backing and flanking. Fire will continue to move upslope/up-canyon.

Marion Fire – Primarily creeping and smoldering with limited surface fire activity and isolated torching.

Colt Lake – Expect little to no fire activity.

AIR OPERATIONS: Expect relatively good visibility with minor afternoon turbulence.

SAFETY: Maintain good situational awareness with the continuation of warm/dry conditions. Conditions conducive for increased torching and short-range spotting (Beaver Fire).

AIR OPERATIONS SUMMARY (ICS 220)

1. Incident Name: Beaver / Marion ID-NCF-000552		2. Operational Period: Date From: Sept. 4, 2020 Time From: 0630		3. Sunrise: 0611		Sunset: 1914	
4. Remarks (safety notes, hazards, air operations special equipment, etc.): Aviation requirement will be reviewed and applied where needed. Consider the safety and risk analysis while planning and ordering A/C With the current fire situation, A/C availability will be shared as needed, unless assigned to the specific incident. A/C request will be approved and ordered accordingly - dispatch		5. Ready Alert Aircraft: Medivac: 1HQ Short Haul Helicopter New Incident: Two Bear Air-(Hoist @		6. Temporary Flight Restriction Number: Altitude: TFR 0/0231 - Freq 127.0750 Center Point: 7 NM Radius			
		8. Frequencies:		9. Fixed-Wing (category/kind/type, make/model, N#, base): Air Tactical Group Supervisor Aircraft:			
		7. Personnel:		AM FM			
Name: Sal Garcia Phone Number: 760 310-0138		Air/Air Rotary-Wing - Flight Following Air/Ground		127.0750 A-10 167.1250 A-9		A/C avail. at Grangeville Airport / Helibase Air Attack - primary AA-117 (N44NC)	
Name: N/A Sharing with Forest		Command Deck Coordinator		Refer to the Comm Plan		Other Fixed-Wing Aircraft: Seats - T-882 @ GIC & T-835 @ GIC	
Name: N/A at this time		Take-Off & Landing Coordinator Air Guard				A/C's are available, but assigned to the Inc at present - shared resources Type I and II have been ordered for the Beaver Inc.	
10. Helicopters (use additional sheets as necessary):							
FAA N#	Category/Kind/Type	Make/Model	Base	Available	Start	Remarks	
Via Dispatch	A/C availability	Not assigned to Inc.					
H-974H	T3	Bell 407	For Planning	Available Local	0800	Order through dispatch	
HB-116	T1	Kaman Aero K-1200	Located at	Available Local	0800	Order through dispatch	
HG-562AJ	T1	CH-47D	Grangeville - Airport	Available Local	0800	Order through dispatch	
11. Prepared by: Name: Sal Garcia Position/Title: AOBDD Signature: _____ Date/Time: 9/3/2020 - 1815							

INCIDENT RADIO COMMUNICATIONS PLAN		Incident Name BEAVER FIRE				Date/Time Prepared 9/3/2020 1000	Operational Period Date/Time 9/4/2020 0700 – 9/5/2020 0700		
Ch #	Function	Channel Name	Assignment	RX Freq N or W	RX Tone	TX Freq N or W	Tx Tone	Mode	Remarks
1	Repeater	Command 1	All Resoces	170.0000 N	136.5	166.6750 N	136.5	A	To Communications
2	Repeater	Command 2	All Resoces	170.6875 N	136.5	166.5750 N	136.5	A	To Communications
3									
4									
5									
6	Tactical	TAC 6	DIV A	168.0500 N	136.5	168.0500 N	136.5	A	NIFC Tac
7	Tactical	TAC 7	DIV B	168.2000 N	136.5	168.2000 N	136.5	A	NIFC Tac
8	Tactical	TAC 8	DIV C	168.6000 N	136.5	168.6000 N	136.5	A	NIFC Tac
9	Tactical	Tac 9	DIV M	166.7250 N	136.5	166.7250 N	136.5	A	NIFC Tac
10	Tactical	TAC 10	Unassigned	166.7750 N	136.5	166.7750 N	136.5	A	NIFC Tac
11	Tactical	Tac 11	Logging	168.2500 N	136.5	168.2500 N	136.5	A	NIFC Tac
12	Local	E Beaver Ridge	I/A	171.5750 N		166.2625 N	100.0	A	NFS Repeater
13	Local	N Rocky Ridge	I/A	171.5750 N		166.2625 N	162.2	A	NFS Repeater
14									
15	Air/Ground	A/G Primary	All	167.1250 N		167.1250 N		A	NIFCA/G Primary
16	Air Guard	Air Guard	All	168.6250 N		168.6250 N	110.9	A	Emergency
Prepared By (Communications Unit)		<i>Thomas Robbins</i>		Incident Location		Powell ID			

The convention calls for frequency lists to show four digits after the decimal place, followed by either an "N" or a "W", depending on whether the frequency is narrow or wide band. Mode refers to either "A" or "D" indicating analog or digital (e.g. Project 25) or "M" indicating mixed mode. All channels are shown as if programmed in a control station, mobile or portable radio. Repeater and base stations must be programmed with the RX and Tx reversed.

HEALTH AND SAFETY MESSAGE:
SAFETY starts with **YOU**

INCIDENTS:
Beaver Fire and Marion Fire

DATE: September 4, 2020
TIME: Day 0600-2000

Covid 19, 2020

IT IS WHAT IT IS.

Historic – maybe, Long – yes, Over- no

That does not mean you can loss focus on this fire or the next one you are on.

Your perception is your reality, but does your “reality” match what is actually happening around you?

- Maintaining situational awareness takes effort!
- Continue planning to provide your safety, and *then* accomplish the mission!
- Watch for complacency in yourself and others, and help them stay sharp.
- Watch for signs of fatigue, and take action to address it.
- Be methodical and relentless in your efforts to get the job done safely!
- **YOU** are the value at risk!!!

Keep your head in the game.

Quote for the day: Better a thousand times careful than once dead. ~Proverb

Snag Safety

Size up snag hazards in work area
Never become complacent
Always look up
Get weather reports
Advise co-workers of known hazards

Face your hazard and take appropriate precautions
Take extra caution around heavy equipment
Scout parking, sleeping and work areas
Examine work area for other hazards
You are ultimately responsible for your own safety



Your Safety Team

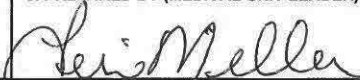

Marvin Carpenter, Steve Wyatt, Dean Whitney(T)

And Each of YOU!!!

MEDICAL PLAN (ICS 206 WF)

1. Incident/ project name and address:						2. Operational Period: Date/Time							
Beaver Powell Idaho						9-4-20 0700-1900							
3. Ambulance Services													
<i>Name</i>				<i>Complete address</i>				<i>Phone & EMS Frequency</i>		<i>ALS</i> ✓			
Missoula Ambulance Service INC				2600 Palmer St Missoula, MT 59808				406-549-2325		X			
Powell QRU				Powell Ranger Station				911					
AMR Ambulance				Division A				Command					
4. Air Ambulance Services													
<i>Name</i>			<i>Location/remarks</i>			<i>Phone & EMS Frequency</i>		<i>ALS</i> ✓	<i>hoist</i> ✓	<i>night</i> ✓			
Life Flight Network			Missoula, MT/Sand Point, ID/Butte			911 406-829-7070		X					
Alert Air Ambulance			Kalispell, MT			911 406-752-5111		X		X			
Two Bear Air			Whitefish, MT			911 406-297-2121			X	X			
5. Hospitals													
<i>Name and Address</i>				<i>Phone</i>		<i>Level of care</i>	<i>Heli Pad</i> ✓	<i>If Helipad, Lat./Long. (DD mm.mmm') Datum WGS84</i>			<i>Travel time to hosp: min's</i> <i>Air Ground</i>		
Eastern Idaho Regional Medical Center 3100 Channing Way Idaho Falls, ID 83404				208-529-6111		Trauma II Burn center	X	N 43 28' 30" W 111 59' 53"			285		
St. Patrick Hospital 500 Broadway Missoula, MT				406-543-7271		Trauma II	X	N 46 52.524 W113 59.969			68		
Community Medical Center 2827 Ft. Missoula Rd Missoula, MT				406-728-4100		Trauma III	X	N 46 50.909 W 114 02.865			64		
6. Area Location Capability													
<i>Branch, Div, Group</i>		<i>Aid Station Name; Responders</i>			<i>Equipment available</i>	<i>Emergency frequency</i>	<i>Ambulance ETA to site: min's</i> <i>Air Ground</i>		<i>Nearby Helispot &/or DP</i>	<i>Helispot &/or DP lat/long (DD mm.mmm') Datum WGS 84</i>			
Powell Ranger Station		MEDL/EMPF Teri Miller			ALS								
Powell Ranger Station		MEDL(t) Melanie Miller											
Powell FOB/spike-		Rosemary Meyers			AEMT								
Division A		Jerry Patterson 509-999-0457 Josh Amback 509-688-7593			EMPT EMTF								
7. Notes, special procedures: Use Medical Incident Report for medical response and Medical Incident Pre-Planning worksheet for briefing. Medical Emergencies should be reported in accordance with Lolo/Kootenai Forest procedures.													
8. Prepared by (Medical Unit Leader)						9. Date/Time		10. Reviewed by (Safety Officer)			11. Date/Time		
Teri Miller 						9/3/20 1700		Steve Wyatt 			9/3/20 1700		

ICS 206-COVID

COVID-19 PLAN	1. INCIDENT NAME ID-NCF	2. DATE PREPARED 8/27/2020	3. TIME PREPARED	4. OPERATIONAL PERIOD				
5. INCIDENT MEDICAL AID STATIONS								
MEDICAL AID STATIONS	LOCATION			ISOLATION				
				YES NO				
				YES NO				
				YES NO				
				YES NO				
6. LOCAL SUPPORT								
A. OFF-SITE ISOLATION FACILITIES								
NAME	LOCATION	PHONE	MEDICAL					
			YES	NO				
TBD	Contact IMT/Host District			X				
B. PUBLIC HEALTH / IMO								
NAME	LOCATION	TESTING						
		YES	NO	NO				
Idaho North Central Health District #2	215 10 th Street, Lewiston ID 83501 (208-799-3100)							
Serving Latah, Clearwater, Nez Perce, Lewis, and Idaho counties CONTACT: Ed Marugg	Email: emarugg@phd2.idaho.gov work:208-799-3100 COVID HOTLINE: 1-866-736-6632							
ID-NCF Safety Officer Brett Rogers	406-396-0553 or brett.rogers@usda.gov							
7. TESTING FACILITIES								
NAME	ADDRESS	Appointment Required		PHONE	Days of Operation		Hours of Operation	
		YES	NO		WD	WE	WD	WE
Clearwater Valley Hospital Orofino	301 Cedar Street, Orofino ID 83544		X	208-476-4555-hospital 208-476-8035-lab	M-F	Sat	0900-1700	0900-1700
	For >20 people, contact COVID ICs to coordinate logistics and timing			208-962-2303 or incidentcommander@smh-cvhc.org				
8. COVID-19 PROCEDURES								
IN-CAMP SCREENINGS					FIELD SCREENINGS			
TBD at Incident and on each District and itemized					TBD at Incident and on each District and itemized			
ICS COVID-19 206	9. PREPARED BY (MEDICAL UNIT LEADER) 				10. REVIEWED BY (SAFETY OFFICER) 			

ASSIGNMENT-SPECIFIC MEDICAL EMERGENCY ACTION PLAN

Pre-Planning for today's assignment

What are the likely hazards that could cause injuries? What kind of severe injuries?		
Who is the likely in-charge DIVS or overhead for an emergency in your assigned area today? (i.e. "Division Zulu")		
Who are the Medical personnel assigned to your part of the incident? What are their capabilities?		
Other Emergency Responders: fire dept., crash rescue, ambulance?		
Communications: Command channel, Air to Ground, Medical helicopters, local rescue/medical?		
Transportation methods available	Ground vehicle, drop point, coordinates, travel route?	
	Aircraft I.D, Helispot names, coordinates? Hoist capable, internal transport	
	Other available methods - contingency	
Most likely workforce for evacuation		

Response checklist

Who takes charge?

- DIVS or designated Overhead manages the overall scene and evacuation process.
- Medical personnel and emergency responders manage patients and assist in rescue/extrication.
- OPS and IC make command decisions so the emergency can be given full attention and management. They continue to manage ongoing incident operations.

Response sequence:

- First, secure the scene and protect responders and patients from further injury. Render first aid.
- Clear the Command channel for "Emergency Traffic only" if this is a critical emergency. If not, inform Communications of non-critical-emergency status and use normal communications.
- Contact closest Medical personnel and DIVS or designated Overhead for response.

Information for Communications: Medical Incident Report – See last page of IAP and IRPG pages 118 and 119.

Helicopter Extraction Operations: See IRPG pages 116 and 117.

Severe Weather: In the event of forecasted severe weather, implement Incident Severe Weather Plan.

Incident Within Incident: Upon arriving at the incident, all overhead should obtain and review the team's Incident Within Incident Plan.

HOW TO SUBMIT YOUR TIME

Resources have 3 options

1. Fill out your CTR/Shift Ticket and have your supervisor sign. Place in box provided at morning briefing.
2. Fill out your CTR/Shift Ticket, have your supervisor sign, take a picture of it and email to Finance. On subject line put your: Last name (if CTR) or Contractor name (if Shift Ticket), and the word, Time. Email to: lisa_hawdon@firenet.gov
3. Fill out a fillable CTR/Shift Ticket, email it to your supervisor to sign and your supervisor emails it to Finance. On subject line put: Last name (if CTR) or Contractor name (if Shift Ticket), and the word, Time. Email to: lisa_hawdon@firenet.gov

If you would like a fillable CTR/Shift Ticket, email: lisa_hawdon@firenet.gov
Subject: Fillable Form. Within body message, state what form you would like and we will reply back to you with the electronic form.

If you are with the Montana DNRC, same as above, and state whether you would like the fillable Emergency Personnel & Equipment Shift Ticket (Combined form) or would like the individual CTR/Shift Ticket.

Fillable = Electronic

Please include your cell phone number in remarks

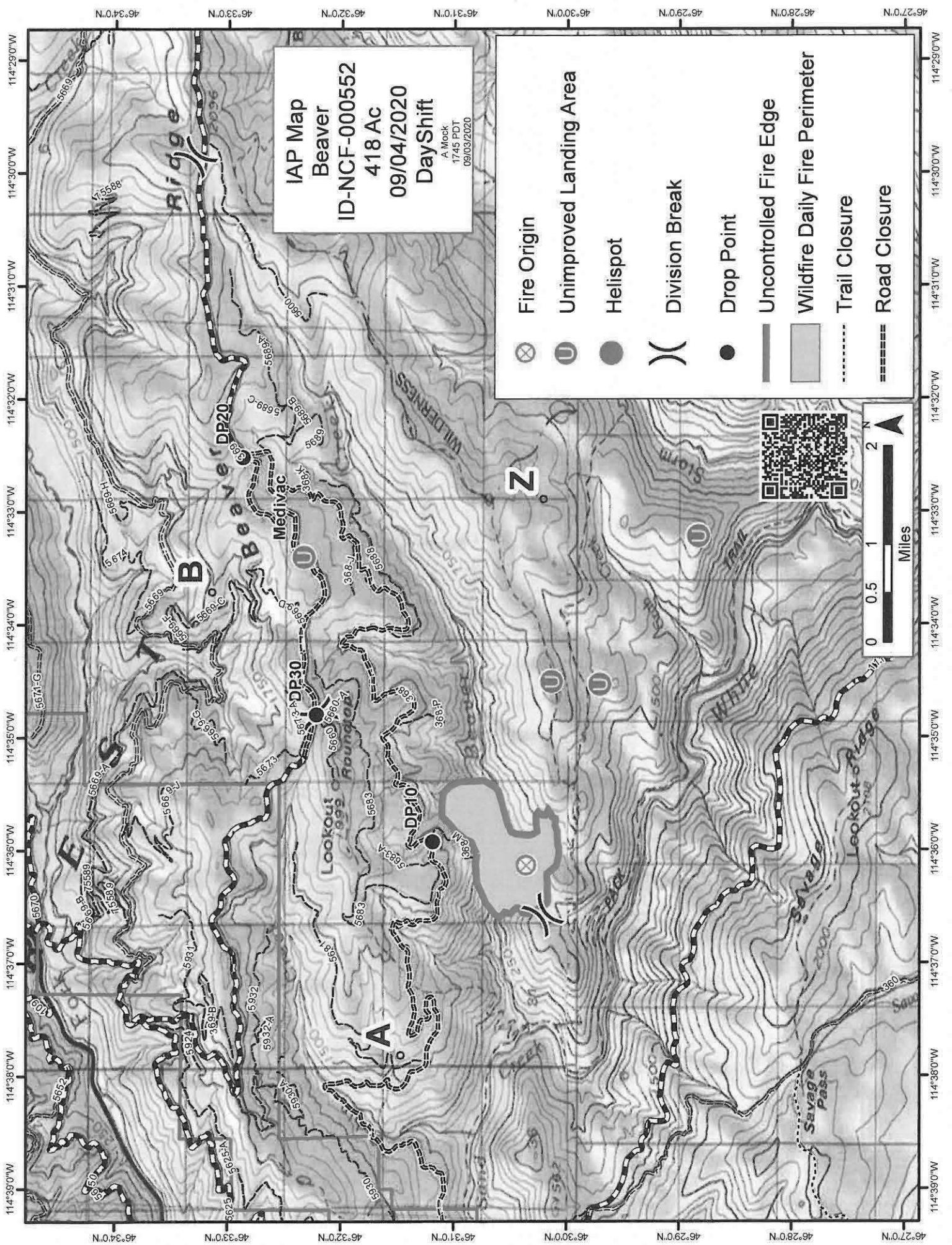
Note: Ensure your CTR or Shift ticket has a Supervisor's signature and show meal breaks.

Please do not wait to turn in your time. Please submit asap. We never know when resources could be moved to a higher priority fire and that will really slow down the reassignment process especially in this remote environment.

First source of supply is Cache, shaded blocks indicate items available thru Northern Rockies Cache. Items requiring an approved Property Loss and Damage form are in a separate list at the bottom.													
PART	034/341	360/MS360	MS561	MS362	038/381	044/MS440	MS441	460/MS461	MS462	0640/650	MS560	MS880	
	Bosch WSR6F NGK BPMR7A Champion RC16Y	Bosch WSR6F NGK BPMR7A Champion RC16Y	Bosch WSR6F NGK BPMR7A Champion RC16Y	Bosch WSR6F NGK BPMR7A Champion RC16Y	Bosch WSR6F NGK BPMR7A Champion RC16Y	Bosch WSR6F NGK BPMR7A Champion RC16Y	Bosch WSR6F NGK BPMR7A Champion RC16Y	Bosch WSR6F NGK BPMR7A Champion RC16Y	Bosch USR7AC NGK CMR6H	Bosch WSR6F NGK BPMR7A Champion RC16Y	Bosch WSR6F NGK BPMR7A Champion RC16Y	Bosch WSR6F NGK BPMR7A Champion RC16Y	
Spark Plug (NFES# 000344)	9512-933-2380 0000-958-1022 9460-624-0801	9512-933-2380 0000-958-1022 9460-624-0801	9512-933-2380 0000-958-1032 9460-624-0801	9512-933-2380 0000-958-1032 9460-624-0801	9512-933-2380 0000-958-1032 9460-624-0801	9512-933-2380 0000-958-1032 9460-624-0801	9512-933-2380 0000-958-1032 9460-624-0801	9512-933-2380 0000-958-1032 9460-624-0801	9512-933-2380 0000-958-1032 9460-624-0801	9512-933-2380 0000-958-1032 9460-624-0801	9512-933-2382 0000-958-1032 9460-624-0801	9512-933-2382 0000-958-1032 9460-624-0801	9512-933-3170 0000-958-1236 9460-624-1001
Oil Filter	0000-350-3504	0000-350-3504	0000-350-3504	0000-350-3504	0000-350-3504	0000-350-3504	0000-350-3504	0000-350-3504	0000-350-3518	0000-350-3504	0000-350-3500	0000-350-3504	
Filter - HD (NFES# 066756)	1125-120-1626	1125-120-1612	1135-120-1600	1140-140-4401	1119-120-1611	0000-140-4402	1140-140-4402	0000-120-1654	1142-140-4402	0000-140-4402	0000-140-4402	0000-140-4402	
Filter - OEM	N/A	N/A	N/A	N/A	1119-120-1500	0000-141-0300	0000-141-0300	0000-141-0300	N/A	0000-141-0300	0000-141-0300	0000-141-0300	
Nut (NFES# 06661)	0000-955-0801	0000-955-0801	0000-955-0801	0000-955-0801	0000-955-0801	0000-955-0801	0000-955-0801	0000-955-0801	0000-995-0803	0000-955-0801	0000-955-0801	0000-955-0903	
Slide Plate	1122-664-1000	1122-664-1000	1122-664-1000	1122-664-1000	1119-664-1000	1128-664-1001	1138-664-1000	1128-664-1001	1128-664-1001	1128-664-1001	1128-664-1001	1128-664-1001	
HL RAPID - Super (RS)													
Pin 3/8" PITCH - .050" GA - DR													
" - 72 DR													
" - 84 DR (NFES# 066500)	3623-005-0072	3623-005-0072	3623-005-0072	3623-005-0072	3623-005-0072	3623-005-0072	3623-005-0072	3623-005-0072	3623-005-0072	3623-005-0072	3623-005-0072	3623-005-0072	
" - 91 DR	3623-005-0084	3623-005-0084	3623-005-0084	3623-005-0084	3623-005-0084	3623-005-0084	3623-005-0084	3623-005-0084	3623-005-0084	3623-005-0084	3623-005-0084	3623-005-0084	
" - 105 DR	3623-005-0091	3623-005-0091	3623-005-0091	3623-005-0091	3623-005-0091	3623-005-0091	3623-005-0091	3623-005-0091	3623-005-0091	3623-005-0091	3623-005-0091	3623-005-0091	
HL RAPID - Super - Full Skip (RSP)													
Pin 3/8" PITCH - .050" GA - DR													
" - 72 DR													
" - 84 DR	3676-005-0084	3676-005-0084	3676-005-0084	3676-005-0084	3676-005-0084	3676-005-0084	3676-005-0084	3676-005-0084	3676-005-0084	3676-005-0084	3676-005-0084	3676-005-0084	
" - 91 DR	3676-005-0091	3676-005-0091	3676-005-0091	3676-005-0091	3676-005-0091	3676-005-0091	3676-005-0091	3676-005-0091	3676-005-0091	3676-005-0091	3676-005-0091	3676-005-0091	
" - 105 DR	N/A	N/A	N/A	N/A	N/A	N/A	N/A	N/A	N/A	N/A	N/A	N/A	
Oil: Quantity - Gallon	NFES # 1880												
Oil: Quantity - Quart	NFES # 1869												
Oil: Quantity - Quart	NFES # 0341												

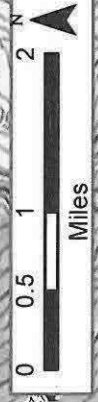
Following parts require an approved Property Loss & Damage form prior to ordering:

de Bars - 3/8" - .050" GA (STIHL)												
(NFES 066584)	3003-000-8822	3003-000-8822	3003-000-8822	3003-000-8822	3003-000-8822	3003-000-8822	3003-000-8822	3003-000-8822	3003-000-8822	3003-000-8822	3003-000-8822	3003-000-8822
Sprocket Kit 3/8 - 7T	1125-007-1040	1125-007-1223	1128-007-1000	1119-007-1003	1119-007-1003	1128-007-1000	1128-007-1000	1128-007-1017	1128-007-1000	1122-007-1000	1122-007-1000	N/A
Order Sprocket Kit	Order Sprocket Kit	Order Sprocket Kit	Order Sprocket Kit	Order Sprocket Kit	Order Sprocket Kit	Order Sprocket Kit	Order Sprocket Kit	Order Sprocket Kit	Order Sprocket Kit	Order Sprocket Kit	Order Sprocket Kit	Order Sprocket Kit
Sprocket 3/8 7T (NFES# 066652)	0000-642-1231	0000-642-1023	0000-642-1216	0000-642-1223	0000-642-1223	0000-642-1223	0000-642-1223	0000-642-1223	0000-642-1223	0000-642-1223	0000-642-1223	N/A
Sprocket kit 3/8 - 8T	N/A	N/A	N/A	N/A	N/A	N/A	N/A	N/A	N/A	N/A	N/A	N/A
Order Sprocket Kit	Order Sprocket Kit	Order Sprocket Kit	Order Sprocket Kit	Order Sprocket Kit	Order Sprocket Kit	Order Sprocket Kit	Order Sprocket Kit	Order Sprocket Kit	Order Sprocket Kit	Order Sprocket Kit	Order Sprocket Kit	Order Sprocket Kit
Sprocket 3/8 - 8T	N/A	N/A	N/A	N/A	N/A	N/A	N/A	N/A	N/A	N/A	N/A	N/A
Adjuster Kit	1125-007-1036	1125-007-1021	1125-007-1021	1118-664-1600	1118-664-1600	1125-007-1021	1125-007-1021	1125-007-1021	1125-007-1021	1125-007-1021	1125-007-1021	1124-007-1008
Strip	1121-648-6610	1121-648-6610	1121-648-6610	1121-648-6610	1121-648-6610	1121-648-6610	1121-648-6610	1121-648-6610	1121-648-6610	1121-648-6610	1121-648-6610	1121-648-6610
Rope W/handle	1128-190-3400	1128-190-3400	1128-190-3400	1128-190-3400	1128-190-3400	1128-190-3400	1128-190-3400	1128-190-3400	1128-190-3400	1128-190-3400	1128-190-3400	1128-190-3400
Gear (Oiler)	1125-640-7110	1125-640-7112	1128-640-7112	1119-642-1501	1119-642-1501	1128-640-7112	1128-640-7112	1128-640-7112	1128-640-7112	1122-640-7105	1122-640-7105	1124-640-7512
ifold Boot	1125-141-2200	1125-141-2200	1140-140-2503	1119-140-2500	1119-140-2500	1128-141-2204	1138-140-2508	1128-141-2204	1142-141-2200	1122-141-2200	1122-141-2201	1124-141-2202

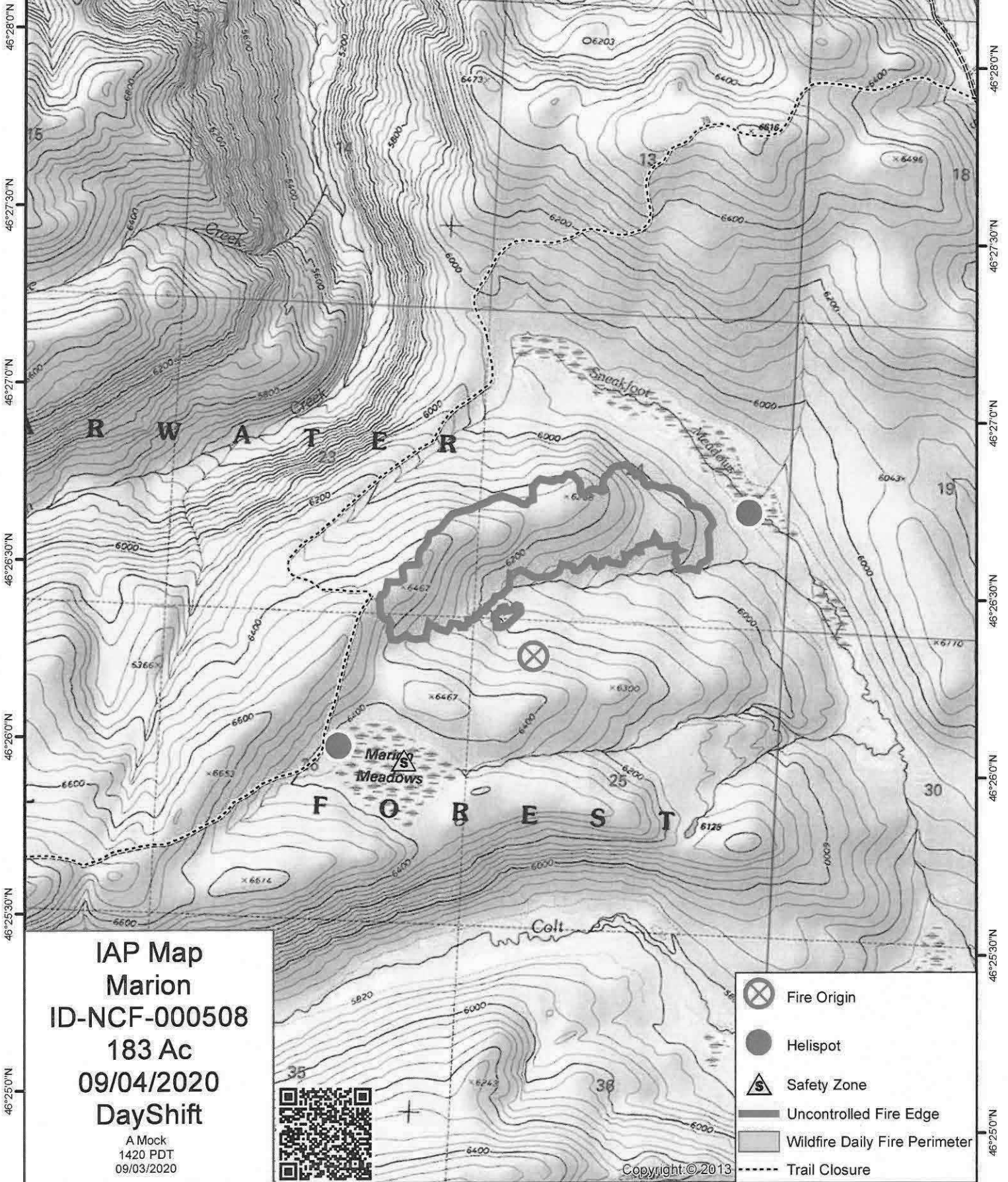
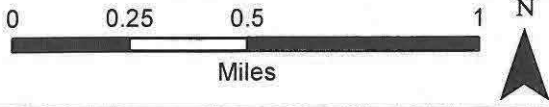


IAP Map
Beaver
418 Ac
09/04/2020
Day Shift
A Mock
1745 PDT
09/03/2020

	Fire Origin
	Unimproved Landing Area
	Helispot
	Division Break
	Drop Point
	Uncontrolled Fire Edge
	Wildfire Daily Fire Perimeter
	Trail Closure
	Road Closure



114°41'30"W 114°41'0"W 114°40'30"W 114°40'0"W 114°39'30"W 114°39'0"W 114°38'30"W 114°38'0"W



IAP Map
Marion
ID-NCF-000508
183 Ac
09/04/2020
DayShift

A Mock
1420 PDT
09/03/2020



- Fire Origin
- Helispot
- Safety Zone
- Uncontrolled Fire Edge
- Wildfire Daily Fire Perimeter
- Trail Closure

Copyright © 2013

114°41'30"W 114°41'0"W 114°40'30"W 114°40'0"W 114°39'30"W 114°39'0"W 114°38'30"W 114°38'0"W

MEDICAL PLAN (ICS 206 WF)

Controlled Unclassified Information//Basic

Medical Incident Report

FOR A NON-EMERGENCY INCIDENT, WORK THROUGH CHAIN OF COMMAND TO REPORT AND TRANSPORT INJURED PERSONNEL AS NECESSARY.

FOR A MEDICAL EMERGENCY: IDENTIFY ON SCENE INCIDENT COMMANDER BY NAME AND POSITION AND ANNOUNCE "MEDICAL EMERGENCY" TO INITIATE RESPONSE FROM IMT COMMUNICATIONS/DISPATCH.

Use the following items to communicate situation to communications/dispatch.

1. CONTACT COMMUNICATIONS / DISPATCH (Verify correct frequency prior to starting report)

Ex: "Communications, Div. Alpha. Stand-by for Emergency Traffic."

2. INCIDENT STATUS: Provide incident summary (including number of patients) and command structure.

Ex: "Communications, I have a Red priority patient, unconscious, struck by a falling tree. Requesting air ambulance to Forest Road 1 at (Lat./Long.) This will be the Trout Meadow Medical, IC is TFLD Jones. EMT Smith is providing medical care."

Severity of Emergency / Transport Priority	<input type="checkbox"/> RED / PRIORITY 1 Life or limb threatening injury or illness. Evacuation need is IMMEDIATE <i>Ex: Unconscious, difficulty breathing, bleeding severely, 2° - 3° burns more than 4 palm sizes, heat stroke, disoriented.</i> <input type="checkbox"/> YELLOW / PRIORITY 2 Serious Injury or illness. Evacuation may be DELAYED if necessary. <i>Ex: Significant trauma, unable to walk, 2° - 3° burns not more than 1-3 palm sizes.</i> <input type="checkbox"/> GREEN / PRIORITY 3 Minor Injury or illness. Non-Emergency transport <i>Ex: Sprains, strains, minor heat-related illness.</i>	
Nature of Injury or Illness & Mechanism of Injury		<i>Brief Summary of Injury or Illness (Ex: Unconscious, Struck by Falling Tree)</i>
Transport Request		<i>Air Ambulance / Short Haul/Hoist Ground Ambulance / Other</i>
Patient Location		<i>Descriptive Location & Lat. / Long. (WGS84)</i>
Incident Name		<i>Geographic Name + "Medical" (Ex: Trout Meadow Medical)</i>
On-Scene Incident Commander		<i>Name of on-scene IC of Incident within an Incident (Ex: TFLD Jones)</i>
Patient Care		<i>Name of Care Provider (Ex: EMT Smith)</i>

3. INITIAL PATIENT ASSESSMENT: Complete this section for each patient as applicable (start with the most severe patient)

Patient Assessment: See IRPG page 106

Treatment:

4. TRANSPORT PLAN:

Evacuation Location (if different): (Descriptive Location (drop point, intersection, etc.) or Lat. / Long.) Patient's ETA to Evacuation Location:

Helispot / Extraction Site Size and Hazards:

5. ADDITIONAL RESOURCES / EQUIPMENT NEEDS:

Example: Paramedic/EMT, Crews, Immobilization Devices, AED, Oxygen, Trauma Bag, IV/Fluid(s), Splints, Rope rescue, Wheeled litter, HAZMAT, Extrication

6. COMMUNICATIONS: Identify State Air/Ground EMS Frequencies and Hospital Contacts as applicable

Function	Channel Name/Number	Receive (RX)	Tone/NAC *	Transmit (TX)	Tone/NAC *
COMMAND					
AIR-TO-GRND					
TACTICAL					

7. CONTINGENCY: Considerations: If primary options fail, what actions can be implemented in conjunction with primary evacuation method? Be thinking ahead.

8. ADDITIONAL INFORMATION: Updates/Changes, etc.

REMEMBER: Confirm ETA's of resources ordered. Act according to your level of training. Be Alert. Keep Calm. Think Clearly. Act Decisively.