

# Mill Creek Climbing – Raptor and Bolting Closures



**Bolting Closure:** The area under moratorium for the continued development of bolting ranges from First Girlfriend Buttriss on the east and extends west through the Eagle Head Buttriss and includes (east to west): First Girlfriend Buttriss, Cracktrilogy, Tick Wall, Tiger Stripe, Pirate Cove, Little Heroes, Big Science, Upper Tier (the routes No Drama Obama & Gortex Vortex), Lower Tier (including the routes from Kids with Guns, Pie for Strength, Siren, and Eagle Head Direct).

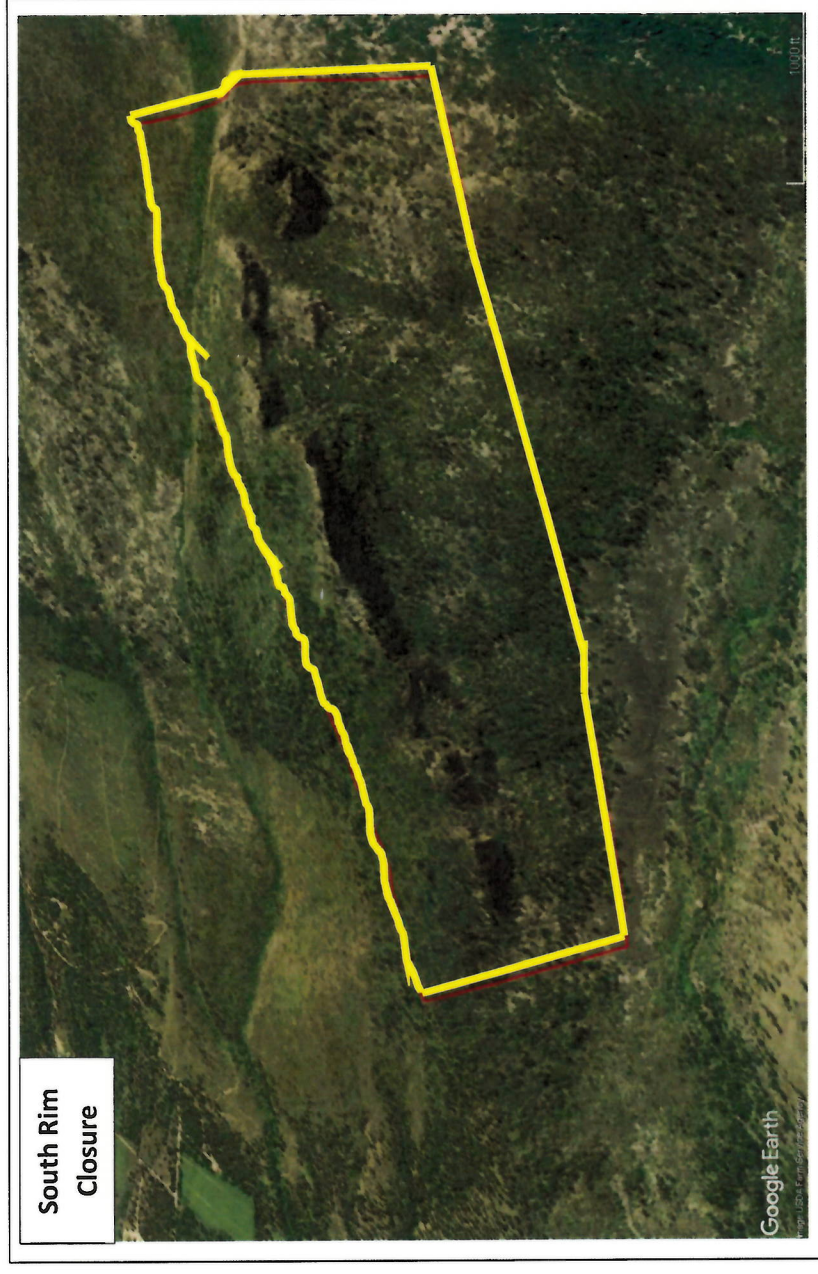
### GPS Coordinates:

**East** N46° 18.576' W114° 14.301 **West** N46° 18.625' W114° 14.520'

**Raptor Closure:** The Raptor Closure includes the area displayed on yellow on the map and photo, and includes the developed routes named The Siren and Pie For Strength. The closure will start **February 1<sup>st</sup>** of each year and continue until it has been determined that no raptors are nesting in the area or until the fledglings have left the nest. See the Bitterroot National Forest's website, [www.fs.usda.gov/bitterroot](http://www.fs.usda.gov/bitterroot), to determine if the closure is still in effect.

### GPS Coordinates:

**East** N46° 18.628' W114° 14.30 **West** N46° 18.625' W114° 14.520'



Questions? contact the Stevensville Ranger District at 406-777-5461